

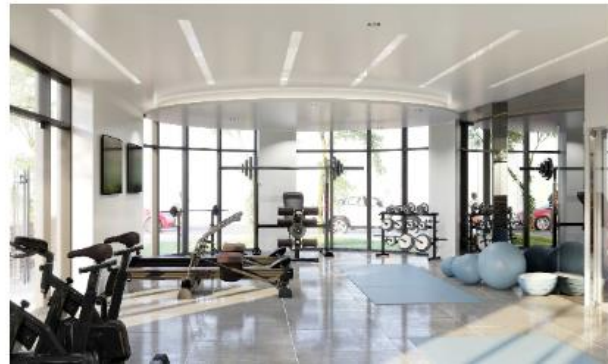
legacie



# The Summit Investors Report

IR07 February 2022

# The Summit 145 Luxury Apartments



## Schedule of Accommodation

### Basement

- Car parking 45 no. spaces
- Lift access
- Plant

### Ground Floor

- Commercial units
- Gymnasium
- 2 no. 1 Bedroom Apartments
- Comms Room
- Refuse store
- Cycle store
- Plant
- Sub-station
- Hard and soft landscaping

### Floors 1 - 10

- 70 no. 1 Bedroom Apartments
- 73 no. 2 Bedroom Apartments
- Roof terraces

# New Build Development to Create Residential Apartments Commercial Units & Basement Parking



Land at corner of Parliament Street & Caryl Street, Liverpool L8 5RW

## The eight & eleven storey new build development generally comprises:

- Excavation and formation of new foundations
- Below and above ground drainage
- New ground supported and part suspended concrete floor slab
- New concrete ramp access to basement parking
- Ten and Eleven storey steel frame structure
- External clad and glazed envelope
- Suspended metal deck and concrete floors
- Flat roof structures and finishes
- Aluminium curtain walling, external windows and doors and shopfronts
- External balconies and balustrades
- Internal sub-division of commercial units, gym and apartments with non-loadbearing block and stud partitions
- Installation of plumbing services and mechanical services
- Installation of electrical services
- Installation of new lift car access
- Installation of kitchen and sanitary fittings
- New internal finishes, joinery fittings and decorations
- Repairs and making good building fabric and internal finishes to the partially completed building

# Site Location



Aerial view of The Summit site location



Aerial view of The Summit site location

# Building Structure

The Summit, Liverpool  
New Build Development

# Sub-Structure & Super-Structure Construction Progress

FEBRUARY 2022

	<b>Original Scheme</b>	<b>On-site Progression</b>
Underground drainage	100% complete	100% complete
Floor slab construction	100% complete	100% complete
Steel frame structure	100% complete	100% complete
Upper suspended steel floor structure	100% complete	100% complete
Internal staircase structure	100% complete	100% complete
Sub-structure masonry walls	100% complete	100% complete
Fire coating steel framework	95% complete	95% complete
Structural framework forming external walls	100% complete	100% complete
Scaffolding & mast climber access	100% complete	100% complete
Flat roof structure	100% complete	100% complete
Flat roof coverings including balconies	95% complete	95% complete
Weatherboarding	100% complete	100% complete
External windows /doors & curtain walling	90% complete	90% complete
External wall insulation & cladding	80% complete	85% complete
External wall insulation & cladding investigation & repair	0% complete	85% complete
Mansafe system	98% complete	98% complete
Brick Work & insulation to elevations	80% complete	15% complete

# Sub-Structure & Super-Structure Progress

FEBRUARY 2022



Parliament Street site view



Parliament Street site view

# Sub-Structure & Super-Structure Progress

FEBRUARY 2022



Parliament Street site view



Parliament Street site view



# Sub-Structure & Super-Structure Progress

FEBRUARY 2022



Parliament Street site view



Parliament Street site view

# Sub-Structure & Super-Structure Progress

FEBRUARY 2022



Parliament Street site view



Parliament Street site view

# Sub-Structure & Super-Structure Progress

FEBRUARY 2022



External cladding remedial works



Caryl Street site view

# Sub-Structure & Super-Structure Progress

FEBRUARY 2022



External cladding remedial works



External cladding remedial works

# Sub-Structure & Super-Structure Progress

FEBRUARY 2022



External cladding remedial works



External cladding installation

# Sub-Structure & Super-Structure Progress

FEBRUARY 2022



Soffit cladding rail installed



Soffit rain screen cladding installed

# Sub-Structure & Super-Structure Progress

FEBRUARY 2022



External cladding remedial works



External cladding remedial works

# Sub-Structure & Super-Structure Progress

FEBRUARY 2022



Window & glazing installation ongoing



Brindley Street elevation insulation & brickwork ongoing



# Sub-Structure & Super-Structure Progress

FEBRUARY 2022



Curtain wall installation



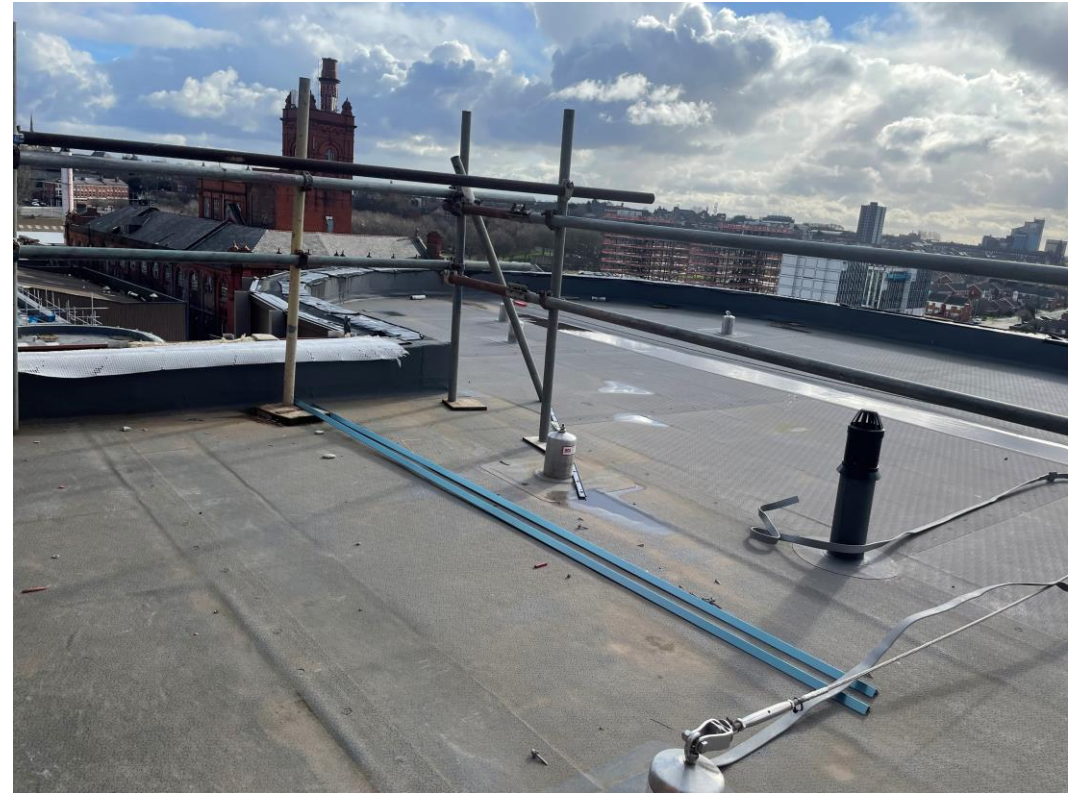
Brickwork installation

# Sub-Structure & Super-Structure Progress

FEBRUARY 2022



Man safe system in place



Man safe system in place

# Sub-Structure & Super-Structure Progress

FEBRUARY 2022



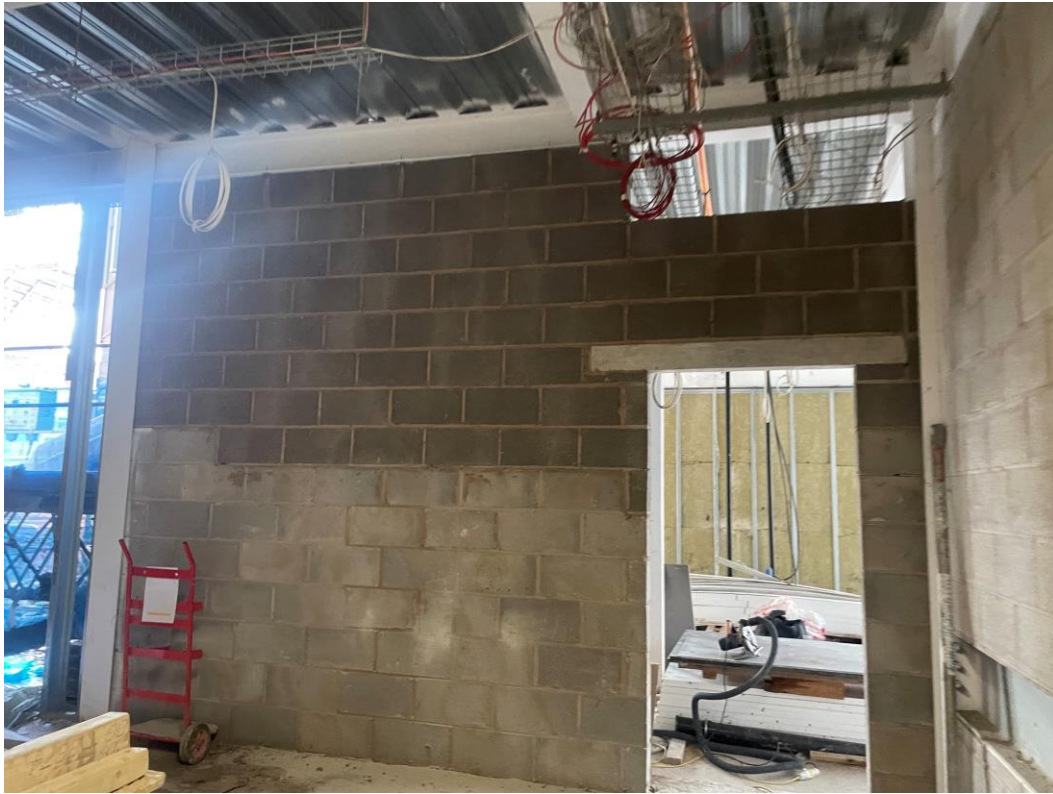
Brickwork installation to basement ramp



Brickwork installation to basement ramp

# Sub-Structure & Super-Structure Progress

FEBRUARY 2022



Blockwork installation commenced



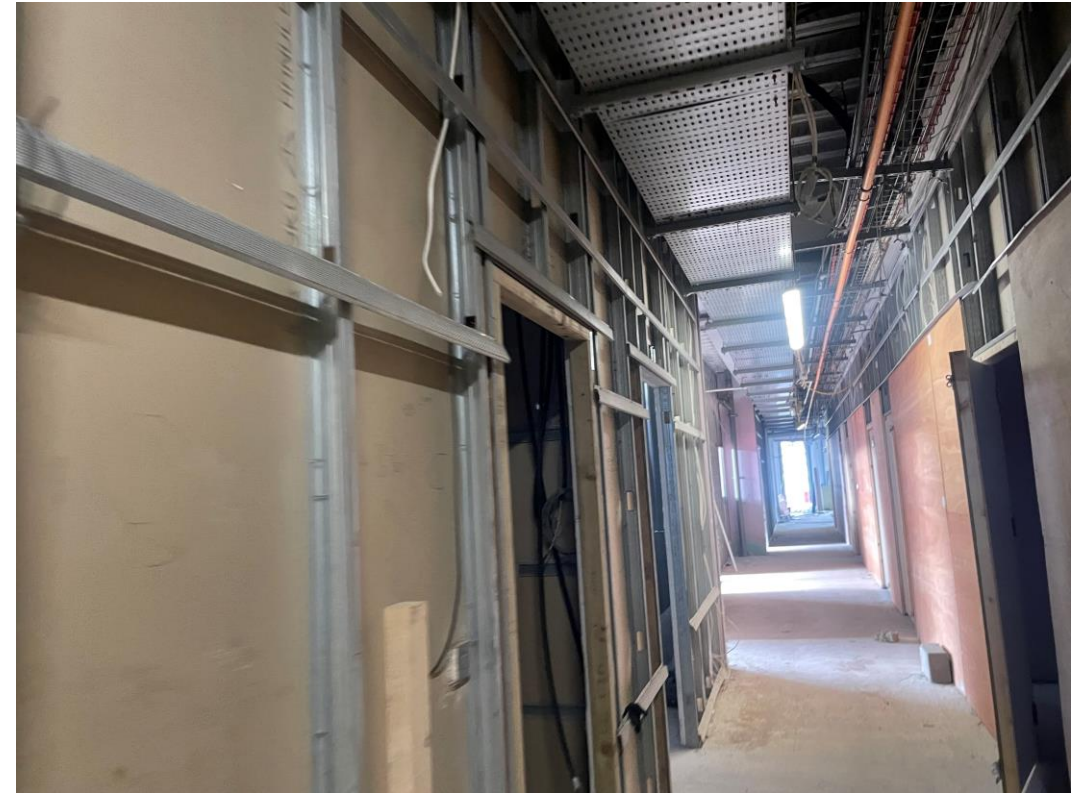
Ground Floor site activity

# Sub-Structure & Super-Structure Progress

FEBRUARY 2022



Ground Floor site activity



Ground Floor site activity

# Internal Fit-out

The Summit, Liverpool  
New Build Development

# Internal Fit-out Construction Progress

FEBRUARY 2022

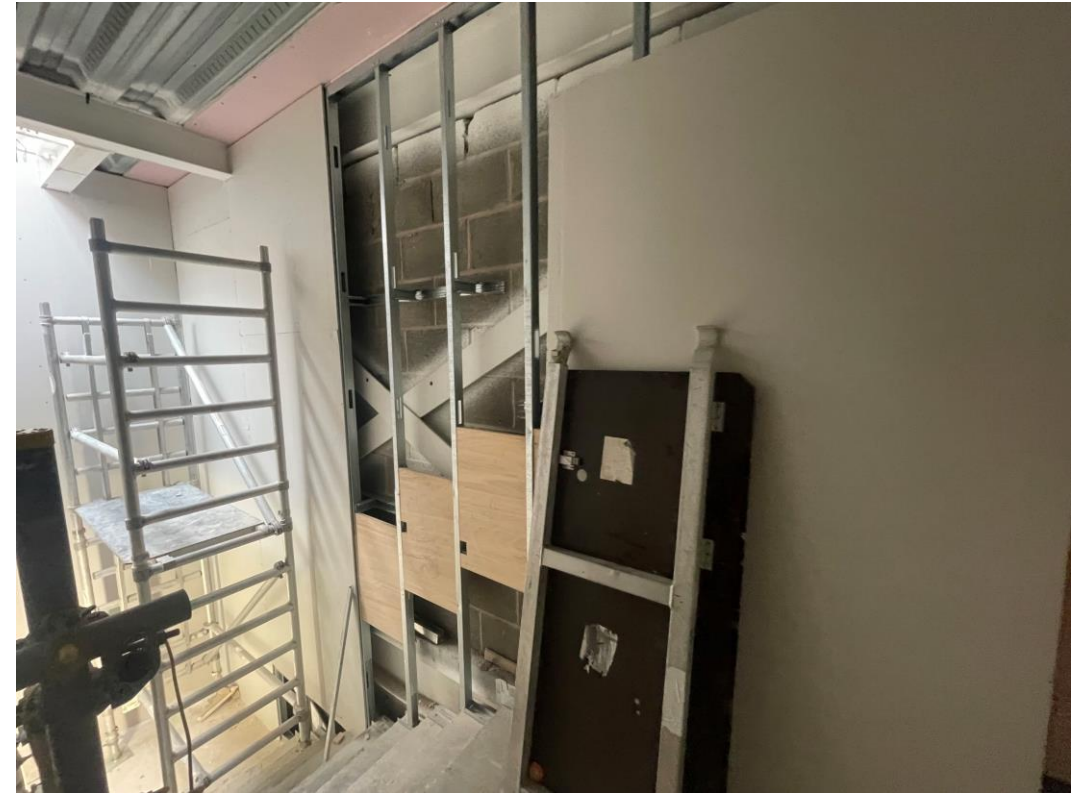
	<b>Original Scheme</b>	<b>On-site Progression</b>
Core drilling for services	100% complete	100% complete
Riser installation	100% complete	100% complete
Lift installation	98% complete	98% complete
Above ground drainage	95% complete	95% complete
Partition walls installation	100% complete	100% complete
Apartment ceiling installation	100% complete	100% complete
Plaster finishes walls and ceilings	100% complete	100% complete
First fix electrical	100% complete	100% complete
First fix plumbing and heating	90% complete	67% complete
Kitchen units and appliances	60% complete	21% complete
Doorframes	70% complete	64% complete
Skirting and architrave	60% complete	64% complete
Bathroom sanitary fittings	60% complete	74% complete
Wall and floor tiling	60% complete	71% complete
Carpet and floor finishes	50% complete	76% complete
Doors and ironmongery	50% complete	50% complete
Decorations	50% complete	60% complete
Second fix electrical	60% complete	43% complete
Second fix plumbing and heating	60% complete	43% complete
General fixtures and fittings	0% complete	0% complete

# Sub-Structure & Super-Structure Progress

FEBRUARY 2022



Partition & pattrass installed to stairwell



Partition & pattrass installed to stairwell



# Sub-Structure & Super-Structure Progress

FEBRUARY 2022



Sprinkler system installation



Stairwell wall boarding installed

# Sub-Structure & Super-Structure Progress

FEBRUARY 2022



Ceiling grid installed



Walls plastered to stairwell

# Sub-Structure & Super-Structure Progress

FEBRUARY 2022



Walls & ceilings skimmed to circulation areas



2<sup>nd</sup> coat decoration

# Sub-Structure & Super-Structure Progress

FEBRUARY 2022



Walls boarded to circulation areas



Walls skimmed to circulation areas

# Sub-Structure & Super-Structure Progress

FEBRUARY 2022



Block A – Kitchens installed



Block A - apartment doors & ironmongery installed

# Sub-Structure & Super-Structure Progress

FEBRUARY 2022



Block A – Kitchens installed



Block A – Kitchens installed

# Sub-Structure & Super-Structure Progress

FEBRUARY 2022



Apartment decoration ongoing



Block A – Appliances installed

# Sub-Structure & Super-Structure Progress

FEBRUARY 2022



Block A – Feature walls



Block A – Feature walls



# Sub-Structure & Super-Structure Progress

FEBRUARY 2022



Block A – Feature walls



Block A – Feature walls

# Sub-Structure & Super-Structure Progress

FEBRUARY 2022



Block A – Feature walls



Block A – Feature walls

# Sub-Structure & Super-Structure Progress

FEBRUARY 2022



Block A – Apartment finishes



Apartment decoration ongoing

# Sub-Structure & Super-Structure Progress

FEBRUARY 2022



Appliance installation



Kitchen unit installation

# Sub-Structure & Super-Structure Progress

FEBRUARY 2022



Block A – Kitchens installed



Doors loaded for installation

# Sub-Structure & Super-Structure Progress

FEBRUARY 2022



Carpets installed



Window boards installed

# Sub-Structure & Super-Structure Progress

FEBRUARY 2022



Water cylinder and ventilation unit installed



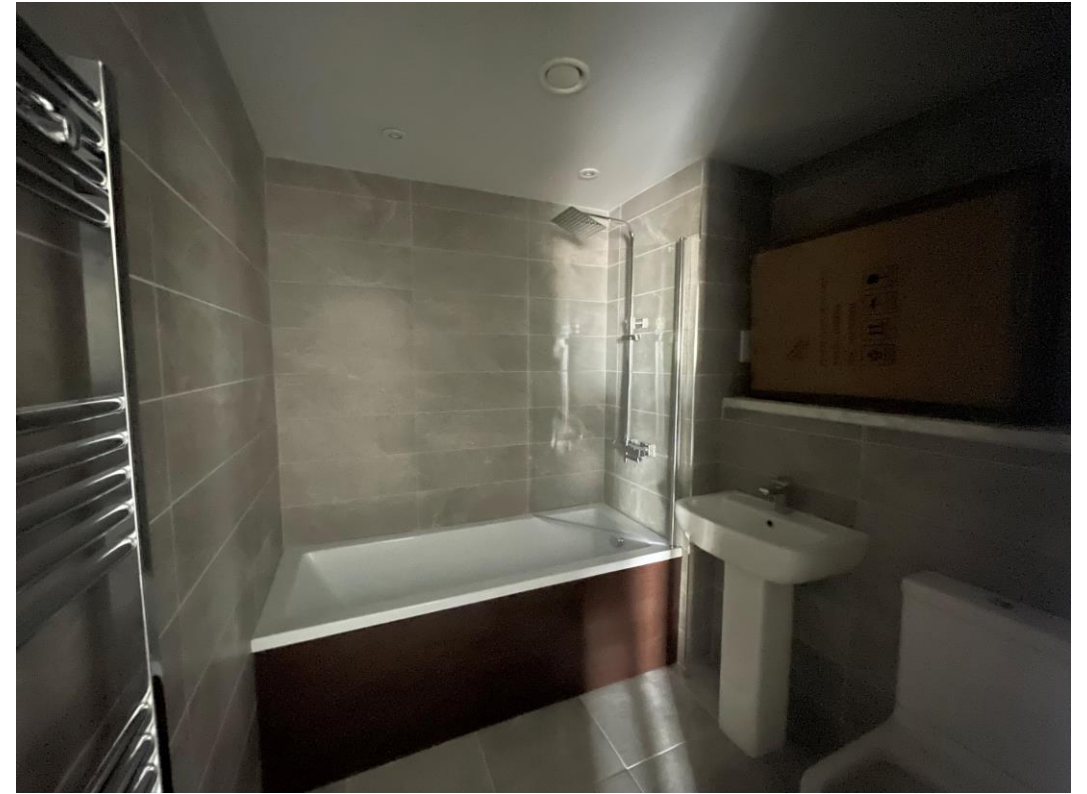
Carpets installed

# Sub-Structure & Super-Structure Progress

FEBRUARY 2022



Bathroom mirrors installed



Bathroom sanitary appliances installed



# Sub-Structure & Super-Structure Progress

FEBRUARY 2022



Bathroom sanitary appliances installed



Bathroom sanitary appliances installed

# Sub-Structure & Super-Structure Progress

FEBRUARY 2022



Bathroom sanitary appliances installed



Bathroom sanitary appliances installed

# Sub-Structure & Super-Structure Progress

FEBRUARY 2022



Installation of bathroom appliances ongoing



Walls & ceilings plastered to stairwell

# Sub-Structure & Super-Structure Progress

FEBRUARY 2022



Water cylinder and ventilation unit installed



Installation of water cylinder ongoing

# Sub-Structure & Super-Structure Progress

FEBRUARY 2022



2<sup>nd</sup> coat decoration



Worktops loaded for installation

# Sub-Structure & Super-Structure Progress

FEBRUARY 2022



2<sup>nd</sup> coat decoration



Apartment doors & ironmongery installed

# Sub-Structure & Super-Structure Progress

FEBRUARY 2022



Apartment doors & ironmongery installed



Apartment doors installed

# Sub-Structure & Super-Structure Progress

FEBRUARY 2022



2<sup>nd</sup> coat decoration



Appliances loaded for installation



# Sub-Structure & Super-Structure Progress

FEBRUARY 2022



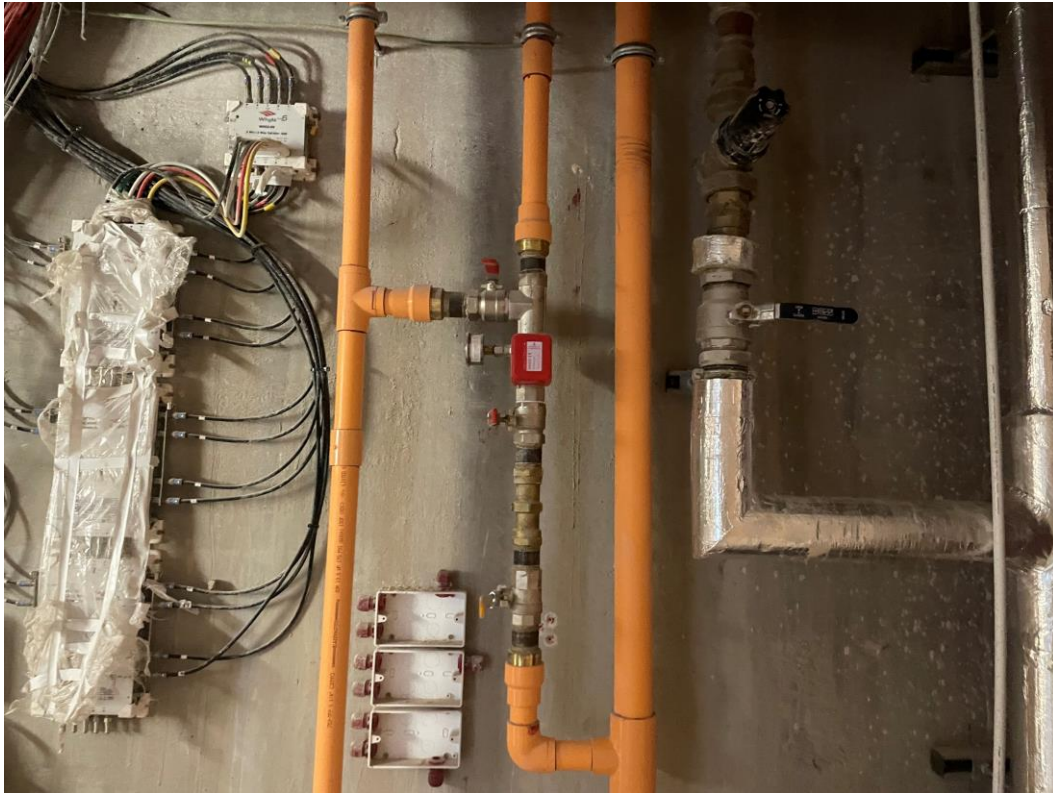
Doors installed for terrace link roof access



Doors installed for terrace link roof access

# Sub-Structure & Super-Structure Progress

FEBRUARY 2022



Sprinkler system installation



Electrics consumer unit

# Sub-Structure & Super-Structure Progress

FEBRUARY 2022



Apartment intercom system



Electrics isolation unit

# Sub-Structure & Super-Structure Progress

FEBRUARY 2022



Radiator loaded for installation



Doors loaded for installation

# Sub-Structure & Super-Structure Progress

FEBRUARY 2022



Plaster loaded for application



Carpets loaded for installation

# Sub-Structure & Super-Structure Progress

FEBRUARY 2022



Paint loaded for application



Carpets loaded for installation

TO FIND OUT MORE ABOUT

## The Summit, Liverpool

PLEASE CONTACT

# legacie

[WWW.LEGACIE.CO.UK](http://WWW.LEGACIE.CO.UK)

By Appointment Only  
Unit 4 Connect Business Village  
Liverpool, L5 9PR  
+44 (0) 151 207 9990