

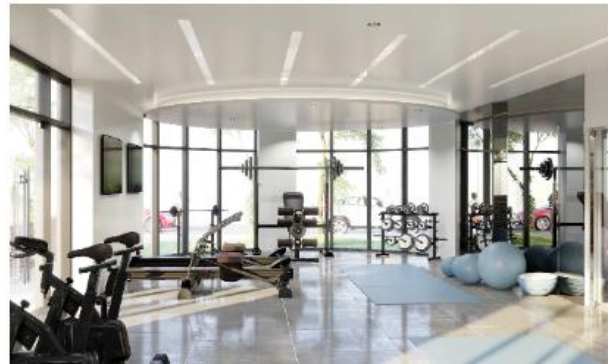
legacie



The Summit Investors Report

IR06 January 2022

The Summit 145 Luxury Apartments



Schedule of Accommodation

Basement

- Car parking 45 no. spaces
- Lift access
- Plant

Ground Floor

- Commercial units
- Gymnasium
- 2 no. 1 Bedroom Apartments
- Comms Room
- Refuse store
- Cycle store
- Plant
- Sub-station
- Hard and soft landscaping

Floors 1 - 10

- 70 no. 1 Bedroom Apartments
- 73 no. 2 Bedroom Apartments
- Roof terraces

New Build Development to Create Residential Apartments Commercial Units & Basement Parking



Land at corner of Parliament Street & Caryl Street, Liverpool L8 5RW

The eight & eleven storey new build development generally comprises:

- Excavation and formation of new foundations
- Below and above ground drainage
- New ground supported and part suspended concrete floor slab
- New concrete ramp access to basement parking
- Ten and Eleven storey steel frame structure
- External clad and glazed envelope
- Suspended metal deck and concrete floors
- Flat roof structures and finishes
- Aluminium curtain walling, external windows and doors and shopfronts
- External balconies and balustrades
- Internal sub-division of commercial units, gym and apartments with non-loadbearing block and stud partitions
- Installation of plumbing services and mechanical services
- Installation of electrical services
- Installation of new lift car access
- Installation of kitchen and sanitary fittings
- New internal finishes, joinery fittings and decorations
- Repairs and making good building fabric and internal finishes to the partially completed building

Site Location



Aerial view of The Summit site location



Aerial view of The Summit site location

Building Structure

The Summit, Liverpool
New Build Development

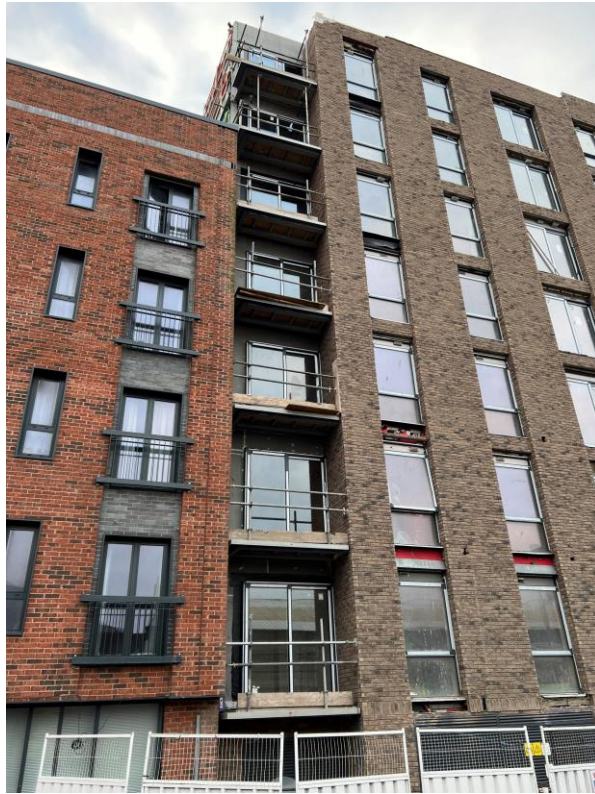
Sub-Structure & Super-Structure Construction Progress

DECEMBER 2021

	Original Scheme	On-site Progression
Underground drainage	100% complete	100% complete
Floor slab construction	100% complete	100% complete
Steel frame structure	100% complete	100% complete
Upper suspended steel floor structure	100% complete	100% complete
Internal staircase structure	100% complete	100% complete
Sub-structure masonry walls	100% complete	100% complete
Fire coating steel framework	95% complete	95% complete
Structural framework forming external walls	100% complete	100% complete
Scaffolding & mast climber access	100% complete	100% complete
Flat roof structure	100% complete	100% complete
Flat roof coverings including balconies	95% complete	95% complete
Weatherboarding	100% complete	100% complete
External windows /doors & curtain walling	90% complete	90% complete
External wall insulation & cladding	80% complete	80% complete
External wall insulation & cladding investigation & repair	0% complete	75% complete
Mansafe system	98% complete	98% complete

Sub-Structure & Super-Structure Progress

JANUARY 2022



Parliament Street site view



Parliament Street site view

Sub-Structure & Super-Structure Progress

JANUARY 2022



External cladding remedial works



Parliament Street site view

Sub-Structure & Super-Structure Progress

JANUARY 2022



Brick remedial works to Parliament Street Elevation



Cladding remedial works to Parliament Street Elevation

Sub-Structure & Super-Structure Progress

JANUARY 2022



Parliament Street site view



Parliament Street site view

Sub-Structure & Super-Structure Progress

JANUARY 2022



Parliament Street site view



Caryl Street site view

Sub-Structure & Super-Structure Progress

JANUARY 2022



Development viewed from Caryl Street



Caryl Street Elevation – cladding remedial works

Sub-Structure & Super-Structure Progress

JANUARY 2022



Caryl Street Elevation – cladding remedial works



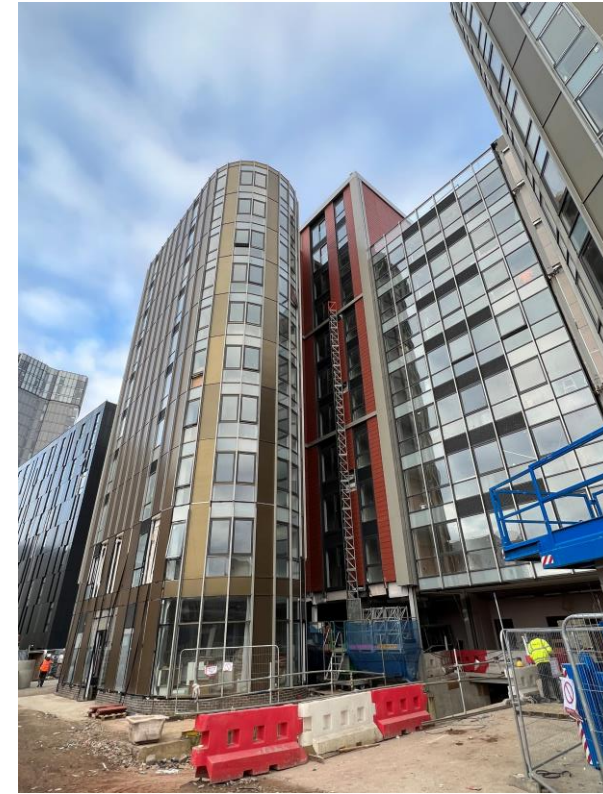
External cladding remedial works

Sub-Structure & Super-Structure Progress

JANUARY 2022



Curtain walling installation to ground level



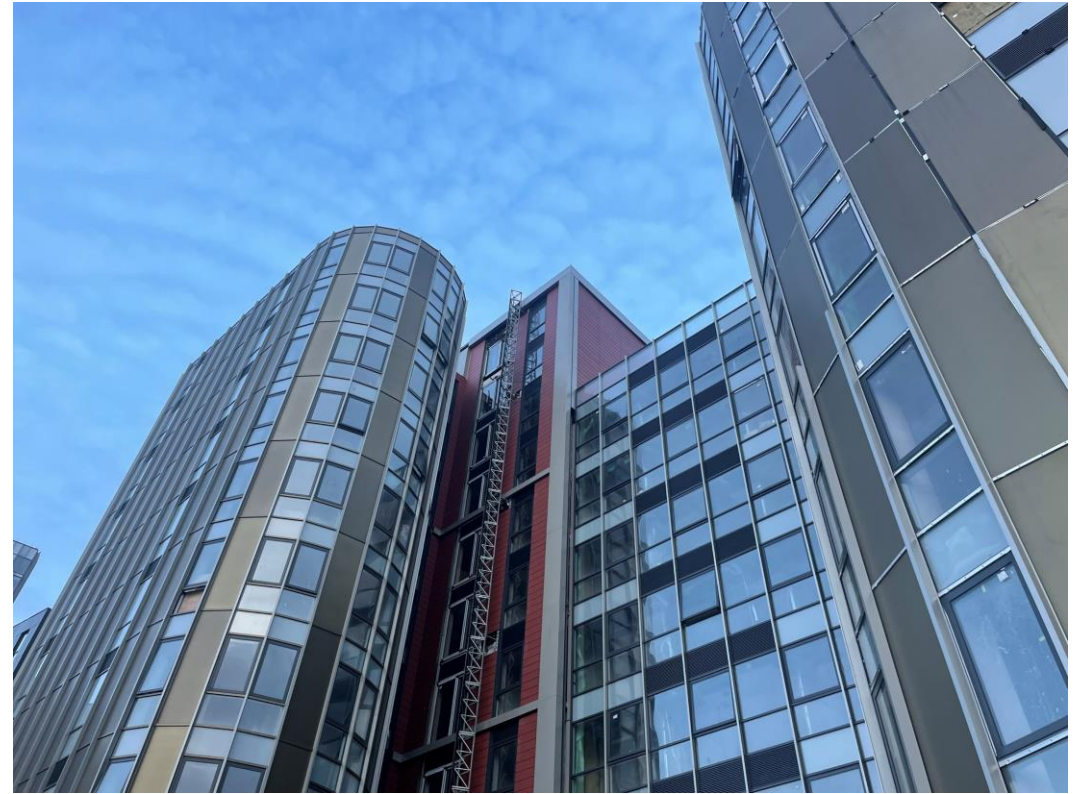
External cladding remedial works

Sub-Structure & Super-Structure Progress

JANUARY 2022



External cladding remedial works



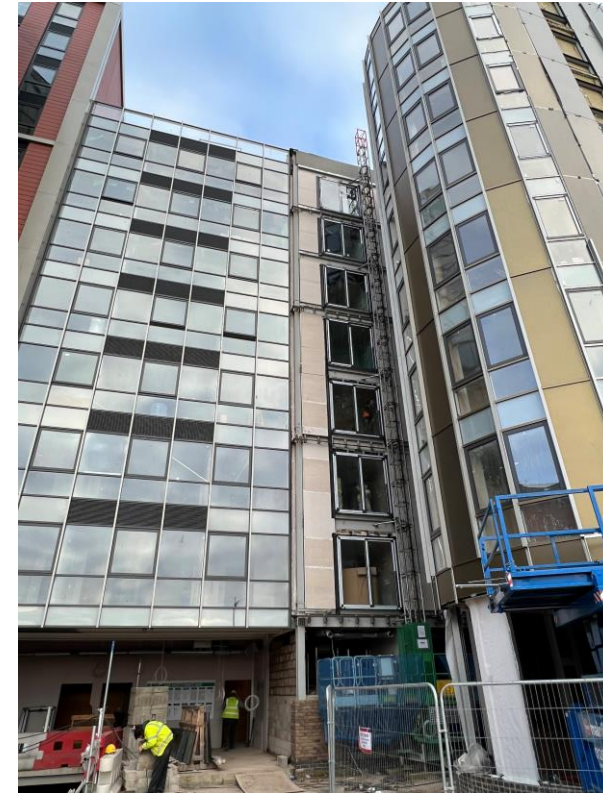
External cladding remedial works

Sub-Structure & Super-Structure Progress

JANUARY 2022



External cladding remedial works



Window & glazing installation ongoing

Sub-Structure & Super-Structure Progress

JANUARY 2022



Brindley Steet Elevation brickwork commenced



Site entrance

Sub-Structure & Super-Structure Progress

JANUARY 2022



Brindley Steet Elevation –
brickwork commenced



Brindley Steet Elevation – brickwork commenced

Sub-Structure & Super-Structure Progress

JANUARY 2022



Tile & Tile Adhesive stored onsite



Plasterboard stored onsite

Sub-Structure & Super-Structure Progress

JANUARY 2022



Brick & Plasterboard stored onsite



Armstead Contract Matt Emulsion stored onsite

Sub-Structure & Super-Structure Progress

JANUARY 2022

LEGACIE CONTRACTS

Daily Activity Briefing Board

Date 24-01-22

HAZARDS	SUBCONTRACTOR	WORKFORCE	LOCATION	DELIVERIES
① MOST CHANGE TO SOUTH ELEVATION	B.A.K.	1 st Floor 1 st Substructure 2 nd Floor (SUBSTRUCTURE) 2 nd Floor (SUPER-STRUCTURE) MEM. OVERLAP N° 5/6	2 nd FLOOR (SUBSTRUCTURE) AND 1 st AND 2 nd FLOOR (SUPER-STRUCTURE) WORKING PHASE AS DETERMINED BY R.P.T.	MON 22 nd KREMAS
② PAINT MOVEMENT AROUND SITE	SHIELD	1 st Floor 1 st General Supervisor	1 st FLOOR INTERI. CORNER AS INST. BY SHIELD	
④ SCHEDULE LEFT TO BEING 2	M.W.S.	1 st Floor 1 st General Supervisor 1 st Substructure	1 st FLOOR CORNER 2 BENCH & 1 st GENERAL SUPERVISOR 1 st FLOOR CORNER 2 BENCH & 1 st GENERAL SUPERVISOR 1 st SUBSTRUCTURE CORNER 2 BENCH	TUE 23 rd SEAMUR - CM
	CEE	1 st Floor 1 st General Supervisor 1 st Substructure	1 st FLOOR CORNER 2 BENCH & 1 st GENERAL SUPERVISOR 1 st FLOOR CORNER 2 BENCH & 1 st GENERAL SUPERVISOR 1 st SUBSTRUCTURE CORNER 2 BENCH	WED 24 th LAWRENCE (MEXO)
	MERBAN	1 st Floor 1 st General Supervisor 1 st Substructure	1 st FLOOR CORNER 2 BENCH & 1 st GENERAL SUPERVISOR 1 st FLOOR CORNER 2 BENCH & 1 st GENERAL SUPERVISOR 1 st SUBSTRUCTURE CORNER 2 BENCH	
	A.W.H.	1 st Floor 1 st General Supervisor 1 st Substructure	1 st FLOOR CORNER 2 BENCH & 1 st GENERAL SUPERVISOR 1 st FLOOR CORNER 2 BENCH & 1 st GENERAL SUPERVISOR 1 st SUBSTRUCTURE CORNER 2 BENCH	
	S.A.L.	1 st Floor 1 st General Supervisor 1 st Substructure	1 st FLOOR CORNER 2 BENCH & 1 st GENERAL SUPERVISOR 1 st FLOOR CORNER 2 BENCH & 1 st GENERAL SUPERVISOR 1 st SUBSTRUCTURE CORNER 2 BENCH	THUR 25 th DORIAN STEVENS
	APRAMAC	NOT ATTEND		
	CHURSE	NOT ATTEND		
	DAI	NOT ON SITE		FRI 26 th

Daily briefing board

✓ SITE SAFETY STARTS HERE

HEALTH & SAFETY LAW	SITE INFORMATION	H & S POLICY	INSURANCE CERTIFICATES	FIRST AID	EMERGENCY CONTACT	SITE RULES
FIRE PLAN	FIRE ACTION	SITE CONTACTS	F10	PERMIT REQUIREMENTS	GENERAL INFORMATION	

LEGACIE CONTRACTS

Site safety board

Internal Fit-out

The Summit, Liverpool
New Build Development

Internal Fit-out Construction Progress

DECEMBER 2021

	Original Scheme	On-site Progression
Core drilling for services	100% complete	100% complete
Riser installation	100% complete	100% complete
Lift installation	98% complete	98% complete
Above ground drainage	95% complete	95% complete
Partition walls installation	100% complete	100% complete
Apartment ceiling installation	100% complete	100% complete
Plaster finishes walls and ceilings	100% complete	100% complete
First fix electrical	100% complete	100% complete
First fix plumbing and heating	90% complete	67% complete
Kitchen units and appliances	60% complete	5% complete
Doorframes	70% complete	64% complete
Skirting and architrave	60% complete	58% complete
Bathroom sanitary fittings	60% complete	56% complete
Wall and floor tiling	60% complete	71% complete
Carpet and floor finishes	50% complete	58% complete
Doors and ironmongery	50% complete	38% complete
Decorations	50% complete	45% complete
Second fix electrical	60% complete	33% complete
Second fix plumbing and heating	60% complete	38% complete
General fixtures and fittings	0% complete	0% complete

Sub-Structure & Super-Structure Progress

JANUARY 2022



Basement site clearance ongoing



Basement site clearance ongoing

Sub-Structure & Super-Structure Progress

JANUARY 2022



Plasterboard stored onsite



Above ground drainage system

Sub-Structure & Super-Structure Progress

JANUARY 2022



Ground floor site activity



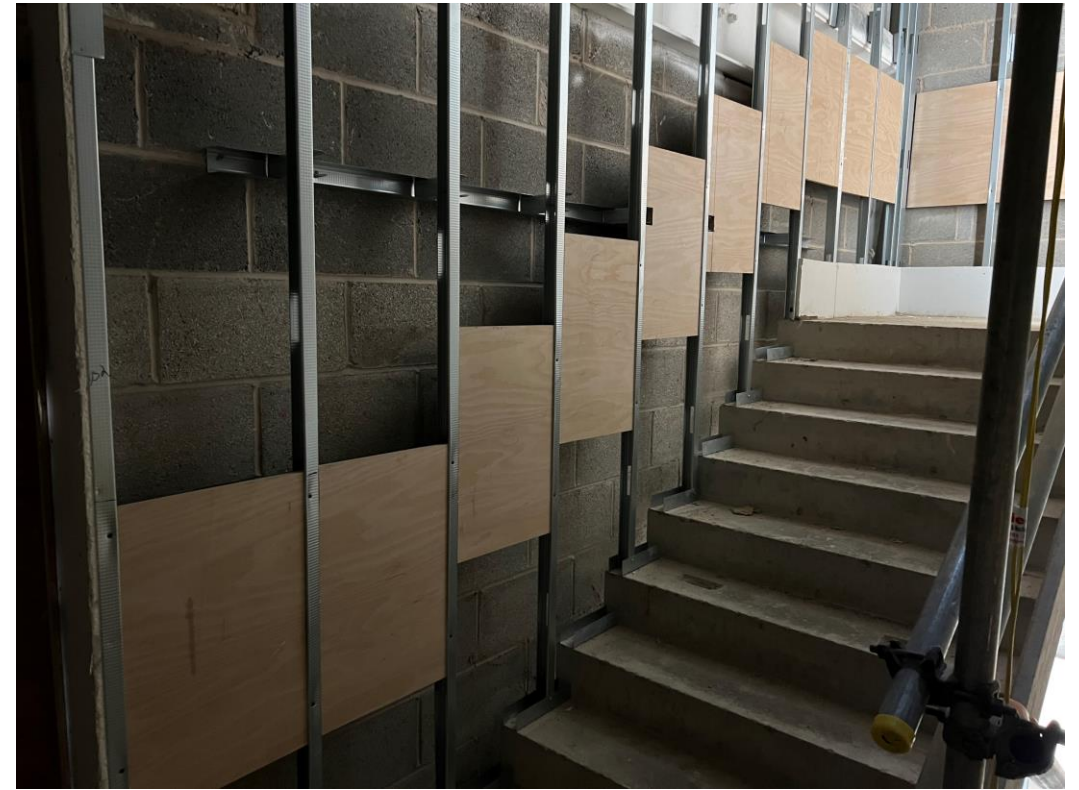
Ground floor site activity

Internal Fitout Progress

JANUARY 2022



Partition & pattress installed to stairwell



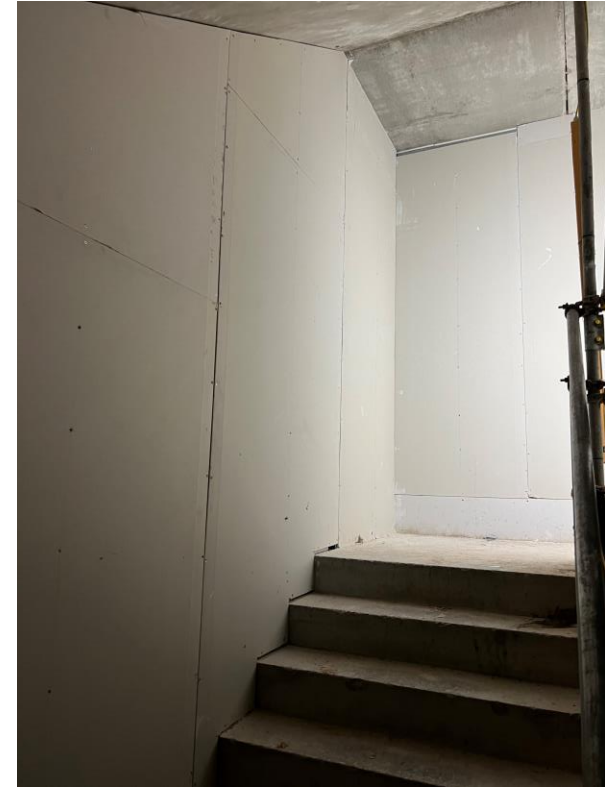
Partition & pattress installed to stairwell

Internal Fitout Progress

JANUARY 2022



Partition & pattice installed to stairwell



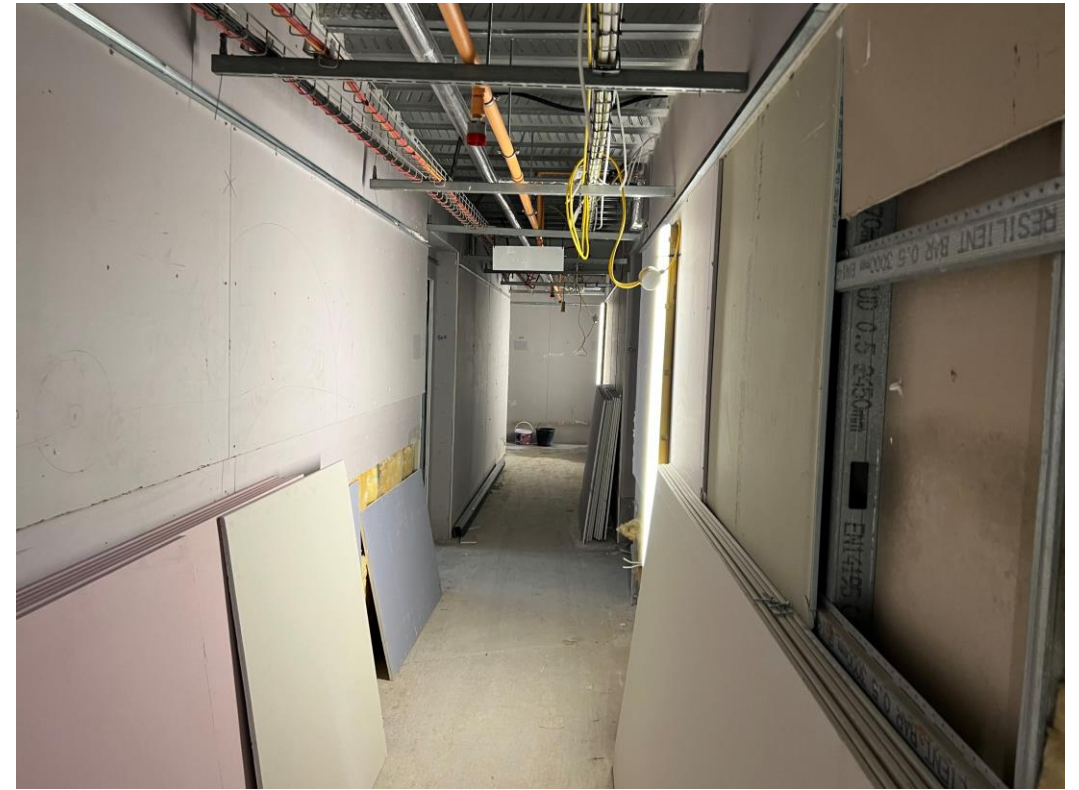
Stairwell wallboarding installed

Internal Fitout Progress

JANUARY 2022



Block B – Wall boarding to corridors



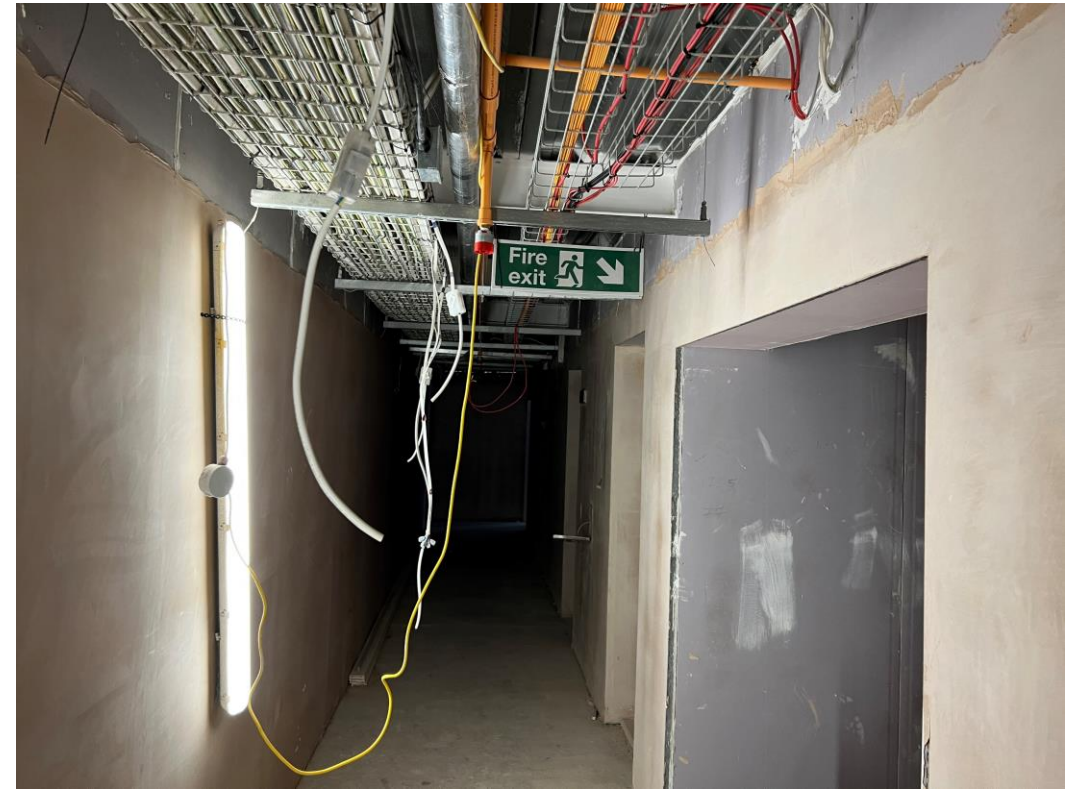
Block B – Wall boarding to corridors

Internal Fitout Progress

JANUARY 2022



Block B – Walls skimmed to corridors



Block B – Walls skimmed to corridors

Internal Fitout Progress

JANUARY 2022



Block B – Ceilings boarded to corridors



Block B – Walls skimmed to corridors

Internal Fitout Progress

JANUARY 2022



Block B – Ceilings skimmed to corridors



Block A – Ceilings decorated to corridors

Internal Fitout Progress

JANUARY 2022



Block B – Ceilings skimmed to corridors



Block A – Ceilings decorated to corridors

Internal Fitout Progress

JANUARY 2022



Block A – Ceilings decorated to corridors



Architrave installed Apt door opening

Internal Fitout Progress

JANUARY 2022



Apartment walls & ceilings plaster skimmed



Apartment walls & ceilings plaster skimmed

Internal Fitout Progress

JANUARY 2022



Ceilings plaster skimmed to apartments



Walls & ceilings plaster skimmed to apartments

Internal Fitout Progress

JANUARY 2022



Walls & ceilings plaster skimmed to apartments



Walls plaster skimmed to apartments

Internal Fitout Progress

JANUARY 2022



Apartment doors installed



Apartment doors installed

Internal Fitout Progress

JANUARY 2022



Apartment doors installed



2nd coat decoration

Internal Fitout Progress

JANUARY 2022



2nd Fix electrics to feature wall



2nd Fix electrics to feature wall

Internal Fitout Progress

JANUARY 2022



Apartment doors installed



Carpets installed

Internal Fitout Progress

JANUARY 2022



2nd coat decoration



Carpets installed

Internal Fitout Progress

JANUARY 2022



2nd fix electrics completed to feature wall



2nd fix electrics to kitchen

Internal Fitout Progress

JANUARY 2022



Decoration to apartments



Carpets installed

Internal Fitout Progress

JANUARY 2022



Decoration to apartment ceilings



2nd fix joinery installed

Internal Fitout Progress

JANUARY 2022



Skirting Boards & Architraves installed



Skirting Boards & Architraves installed

Internal Fitout Progress

JANUARY 2022



Plasterboard installed



Apartment doors installed

Internal Fitout Progress

JANUARY 2022



2nd Coat Decoration



2nd Coat Decoration

Internal Fitout Progress

JANUARY 2022



Block A – Apartment bedroom carpet



Carpets installed

Internal Fitout Progress

JANUARY 2022



Apartment doors installed



Apartment doors installed

Internal Fitout Progress

JANUARY 2022



Apartment doors installed



Apartment doors installed

Internal Fitout Progress

JANUARY 2022



Apartment doors installed



Block A – Kitchen units commenced

Internal Fitout Progress

JANUARY 2022



Block A – Kitchen units commenced



Block A – Kitchen units commenced

Internal Fitout Progress

JANUARY 2022



Bathroom sanitary appliances installed



Bath & panel installed

Internal Fitout Progress

JANUARY 2022



Bathroom sanitary appliances installed



Bathroom vanity shelf installed

Internal Fitout Progress

JANUARY 2022



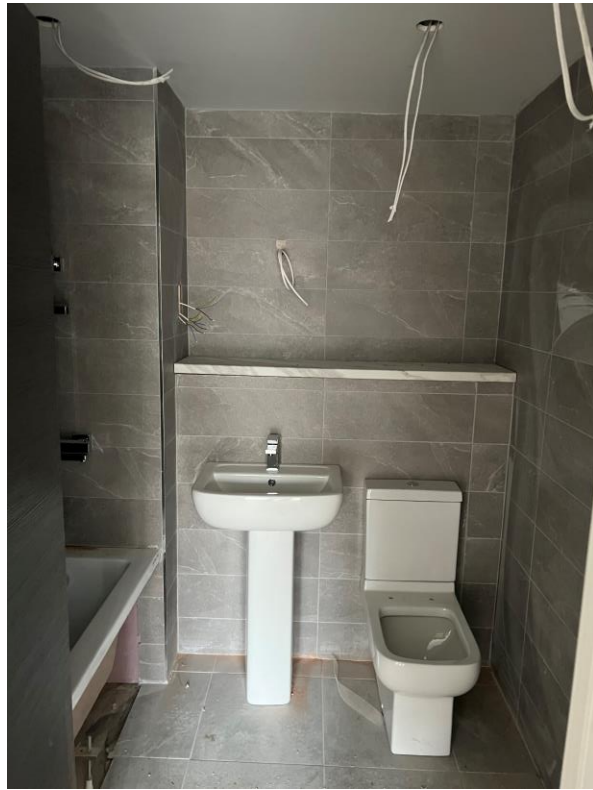
Bathroom sanitary appliances installed



Bathroom sanitary appliances installed

Internal Fitout Progress

JANUARY 2022



Bathroom sanitary appliances installed



Shower bar installed

Internal Fitout Progress

JANUARY 2022



Water cylinder and ventilation unit installed



Water cylinder and ventilation unit installed

Internal Fitout Progress

JANUARY 2022



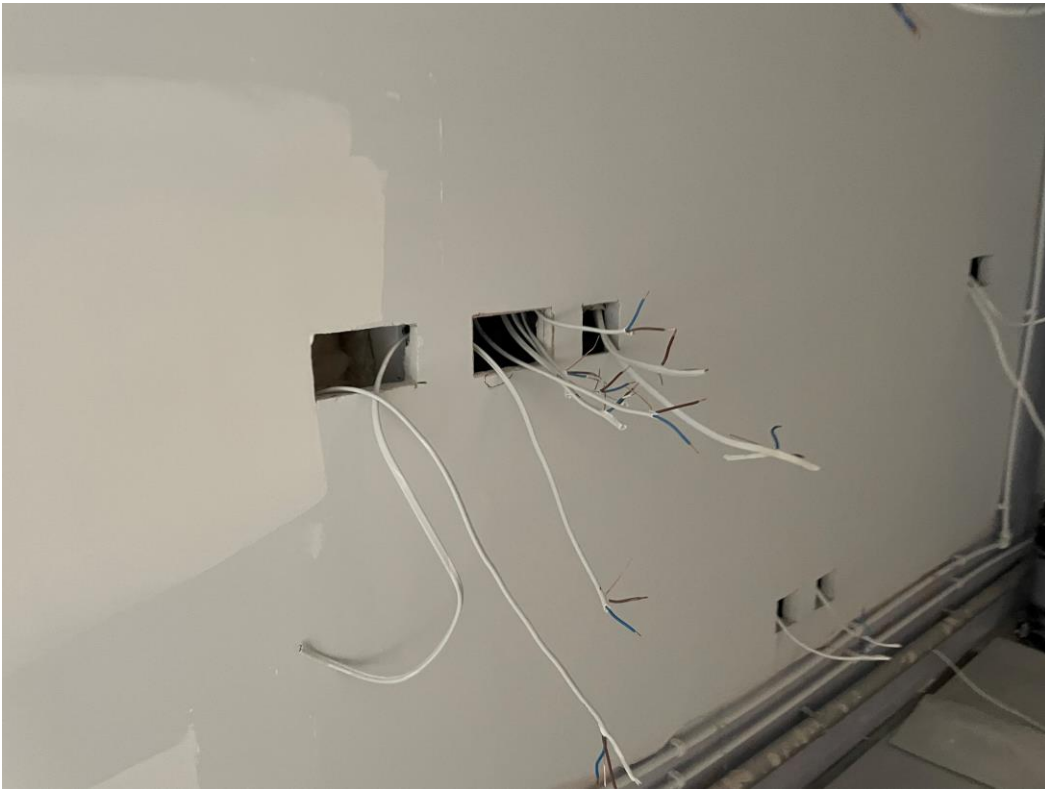
Water cylinder and ventilation unit installed



Electrical lighting installation commenced

Internal Fitout Progress

JANUARY 2022



Kitchen socket electrics commenced



Spotlights & smoke detectors installed

Internal Fitout Progress

JANUARY 2022



Decoration application system



Bathroom wall tiles loaded for installation

Internal Fitout Progress

JANUARY 2022



Kitchen units loaded for installation



Doors loaded for installed

TO FIND OUT MORE ABOUT

The Summit, Liverpool

PLEASE CONTACT

legacie

WWW.LEGACIE.CO.UK

By Appointment Only
Unit 4 Connect Business Village
Liverpool, L5 9PR
+44 (0) 151 207 9990