

legacie



The Summit Investors Report

TR04 November 2021

The Summit 145 Luxury Apartments



Schedule of Accommodation

Basement

- Car parking 45 no. spaces
- Lift access
- Plant

Ground Floor

- Commercial units
- Gymnasium
- 2 no. 1 Bedroom Apartments
- Comms Room
- Refuse store
- Cycle store
- Plant
- Sub-station
- Hard and soft landscaping

Floors 1 - 10

- 70 no. 1 Bedroom Apartments
- 73 no. 2 Bedroom Apartments
- Roof terraces

New Build Development to Create Residential Apartments Commercial Units & Basement Parking



Land at corner of Parliament Street & Caryl Street, Liverpool L8 5RW

The eight & eleven storey new build development generally comprises:

- Excavation and formation of new foundations
- Below and above ground drainage
- New ground supported and part suspended concrete floor slab
- New concrete ramp access to basement parking
- Ten and Eleven storey steel frame structure
- External clad and glazed envelope
- Suspended metal deck and concrete floors
- Flat roof structures and finishes
- Aluminium curtain walling, external windows and doors and shopfronts
- External balconies and balustrades
- Internal sub-division of commercial units, gym and apartments with non-loadbearing block and stud partitions
- Installation of plumbing services and mechanical services
- Installation of electrical services
- Installation of new lift car access
- Installation of kitchen and sanitary fittings
- New internal finishes, joinery fittings and decorations
- Repairs and making good building fabric and internal finishes to the partially completed building

Site Location



Aerial view of The Summit site location



Aerial view of The Summit site location

Building Structure

The Summit, Liverpool
New Build Development

Sub-Structure & Super-Structure Construction Progress

NOVEMBER 2021

	Original Scheme	On-site Progression
Underground drainage	100% complete	100% complete
Floor slab construction	100% complete	100% complete
Steel frame structure	100% complete	100% complete
Upper suspended steel floor structure	100% complete	100% complete
Internal staircase structure	100% complete	100% complete
Sub-structure masonry walls	100% complete	100% complete
Fire coating steel framework	95% complete	95% complete
Fire coating repairs	0% complete	0% complete
Structural framework forming external walls	100% complete	100% complete
Scaffolding & mast climber access	100% complete	100% complete
Flat roof structure	100% complete	100% complete
Flat roof coverings including balconies	95% complete	95% complete
Weatherboarding	100% complete	100% complete
External windows /doors & curtain walling	90% complete	90% complete
External wall insulation & cladding	80% complete	80% complete
External wall insulation & cladding investigation & repair	0% complete	60% complete
Mansafe system	98% complete	98% complete

Sub-Structure & Super-Structure Progress

NOVEMBER 2021



Development viewed Parliament Street



Development viewed Parliament Street

Sub-Structure & Super-Structure Progress

NOVEMBER 2021



Development viewed Parliament Street



Development viewed from Parliament Street. External works ongoing

Sub-Structure & Super-Structure Progress

OCTOBER 2021



Development viewed from Parliament Street



Development viewed from Parliament Street

Sub-Structure & Super-Structure Progress

NOVEMBER 2021



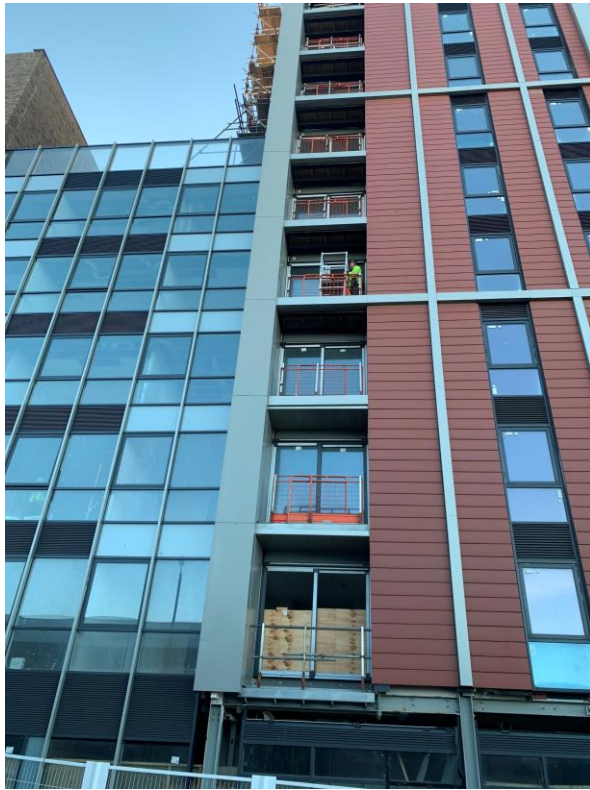
Scaffolding erected to terrace elevation. Cladding installation has commenced



Scaffolding erected to terrace elevation. Cladding installation has commenced

Sub-Structure & Super-Structure Progress

NOVEMBER 2021



Development viewed from Parliament Street



Development viewed from Parliament Street

Sub-Structure & Super-Structure Progress

NOVEMBER 2021



Site hoarding adjusted to facilitate curtain wall installation



Site hoarding adjusted to facilitate curtain wall installation

Sub-Structure & Super-Structure Progress

NOVEMBER 2021



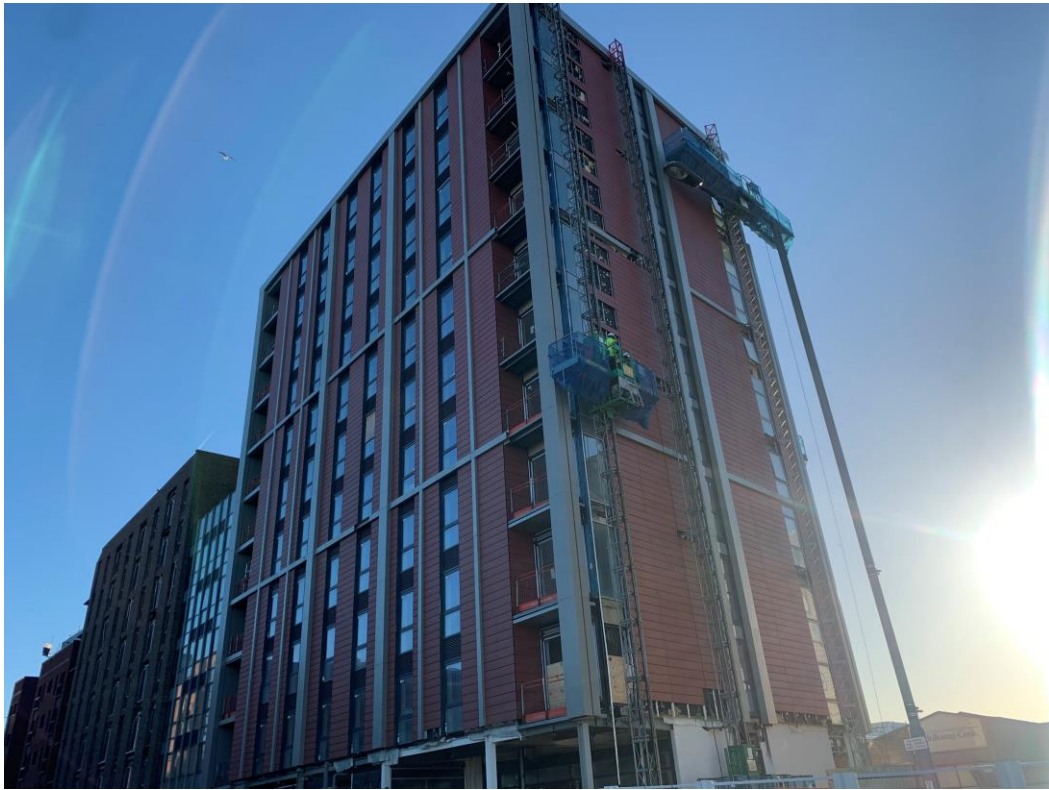
Development viewed from Parliament Street. External works ongoing



Development viewed from Parliament Street. External works ongoing

Sub-Structure & Super-Structure Progress

NOVEMBER 2021



External cladding remedial works and reinstated



External cladding remedial works and reinstated

Sub-Structure & Super-Structure Progress

NOVEMBER 2021



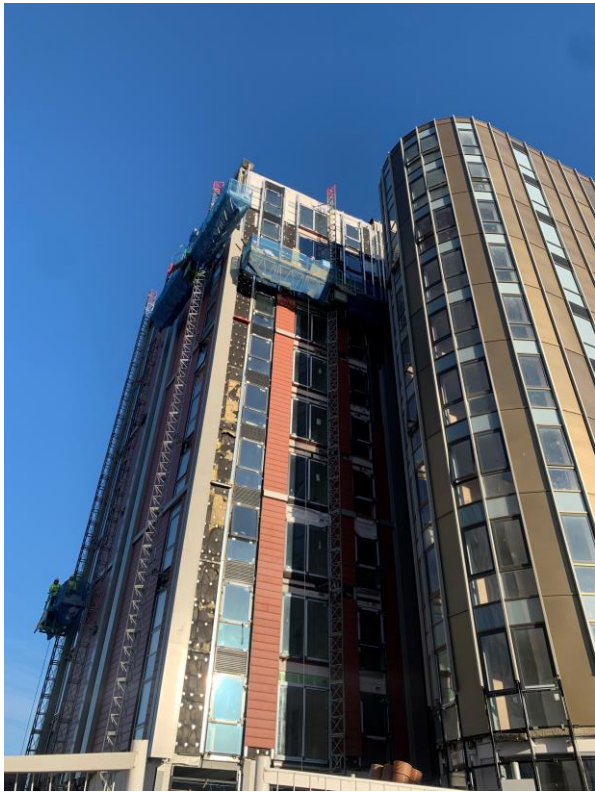
External cladding remedial works and reinstated



External cladding remedial works and reinstated

Sub-Structure & Super-Structure Progress

NOVEMBER 2021



External cladding remedial works and reinstated



External cladding remedial works and reinstated

Sub-Structure & Super-Structure Progress

NOVEMBER 2021



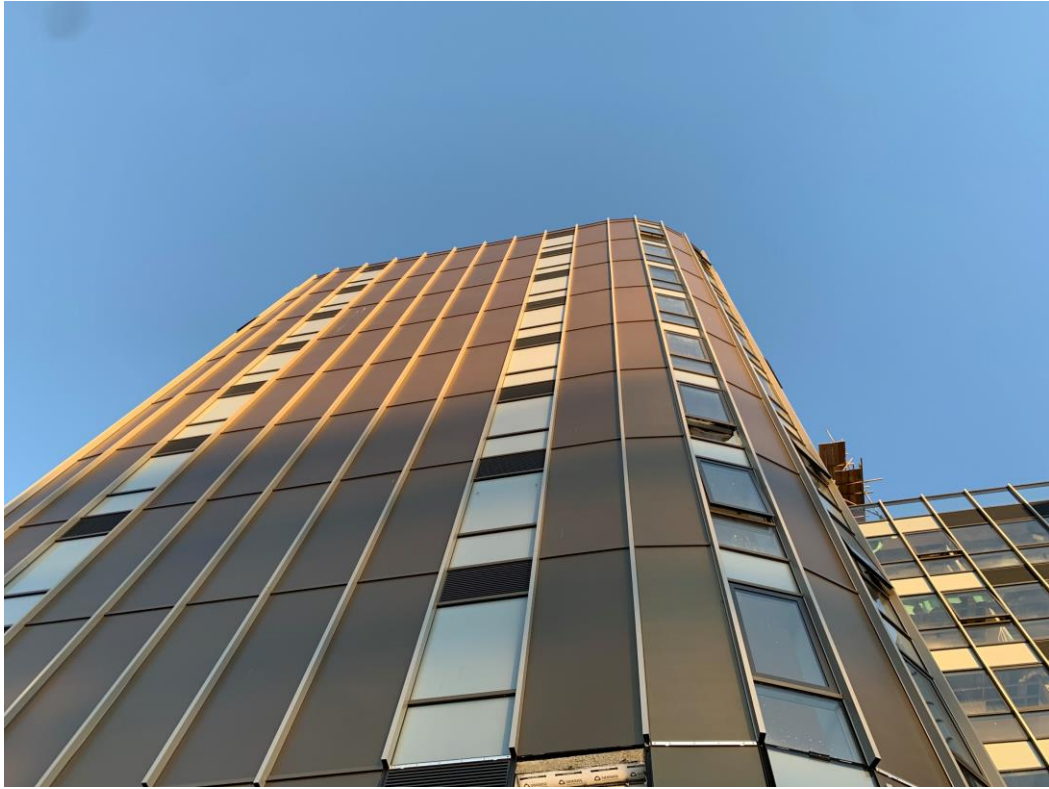
External cladding remedial works and reinstated



External cladding remedial works and reinstated

Sub-Structure & Super-Structure Progress

NOVEMBER 2021



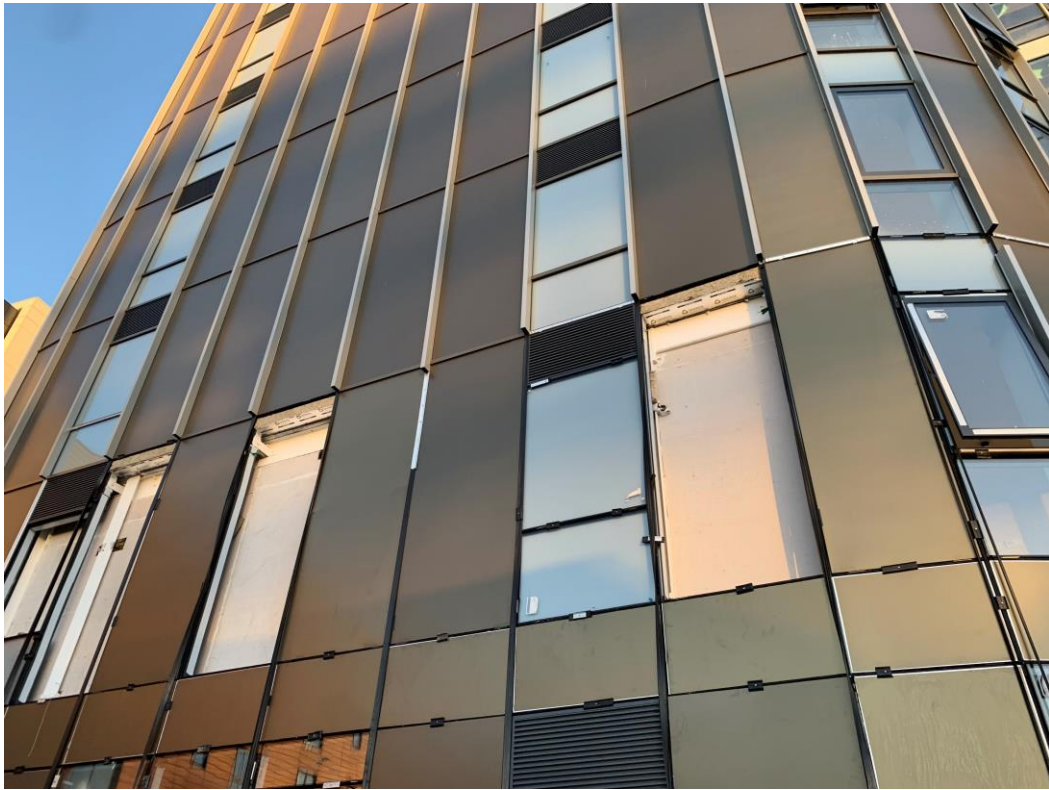
External cladding remedial works and reinstated



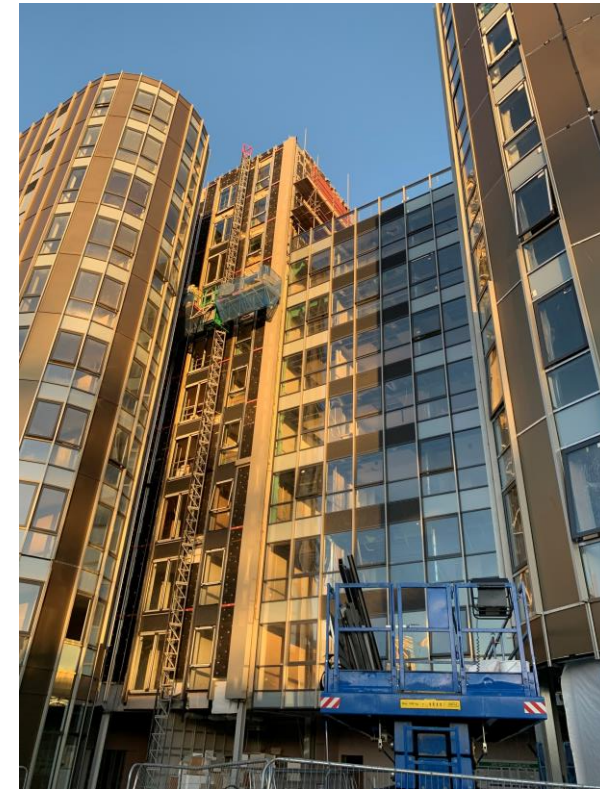
External cladding remedial works and reinstated

Sub-Structure & Super-Structure Progress

NOVEMBER 2021



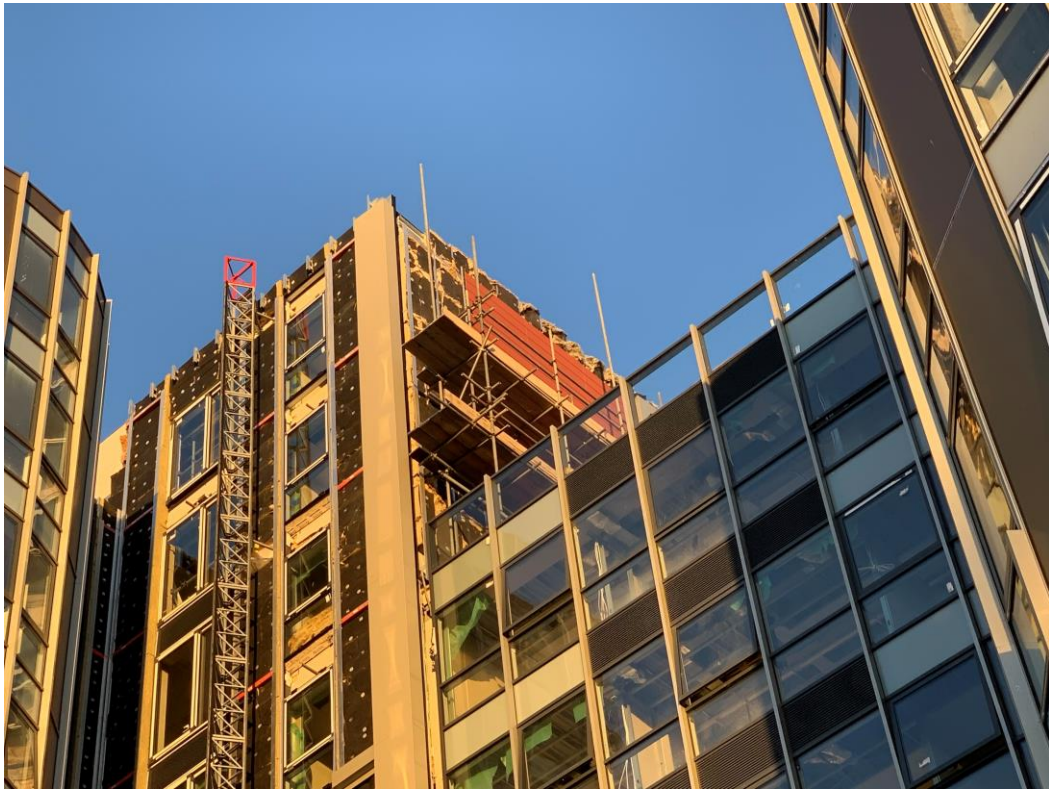
External cladding remedial works and reinstated



External cladding remedial works and reinstated

Sub-Structure & Super-Structure Progress

NOVEMBER 2021



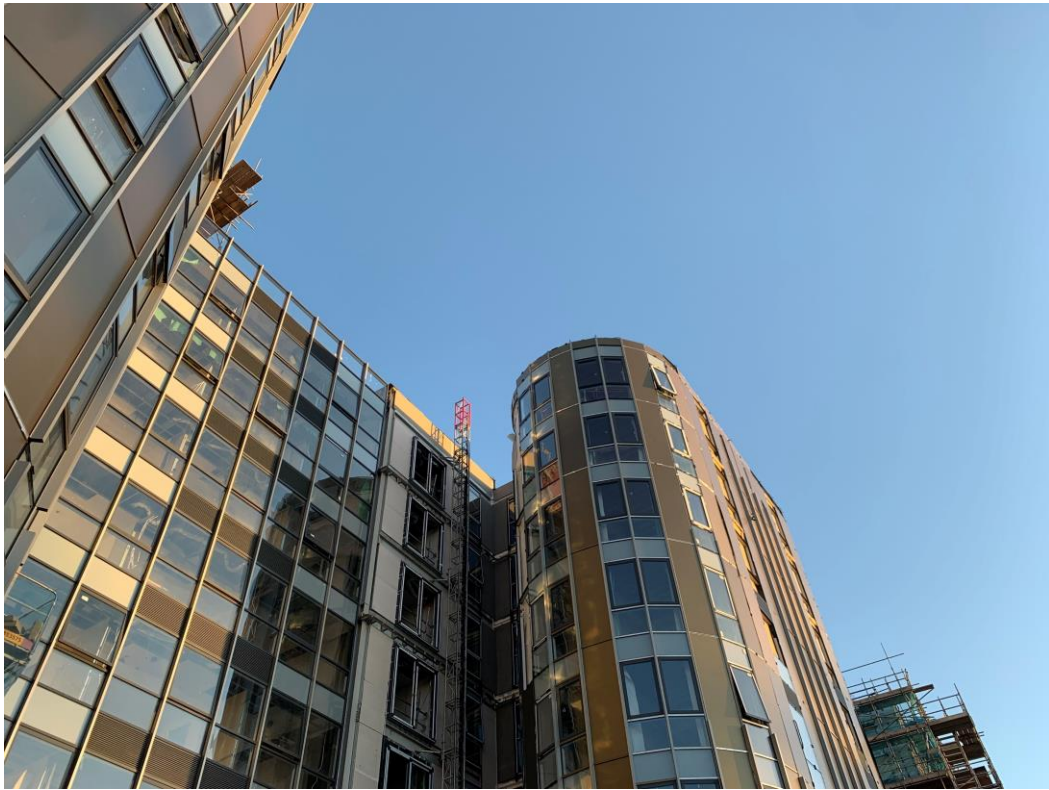
External cladding remedial works and reinstated



External cladding remedial works and reinstated

Sub-Structure & Super-Structure Progress

NOVEMBER 2021



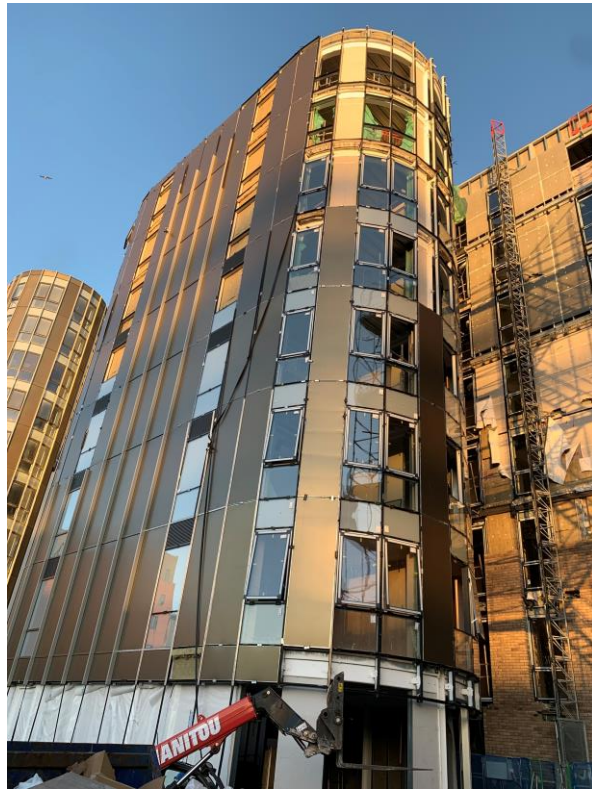
External cladding remedial works and reinstated



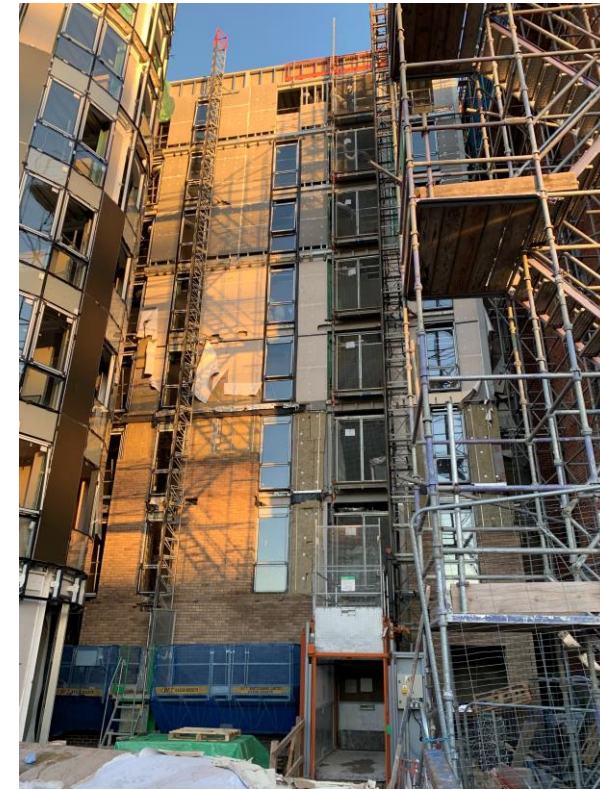
External cladding remedial works and reinstated

Sub-Structure & Super-Structure Progress

NOVEMBER 2021



External cladding remedial works and reinstated



Hoist lift in operation

Internal Fit-out

The Summit, Liverpool
New Build Development

Internal Fit-out Construction Progress

NOVEMBER 2021

	Original Scheme	On-site Progression
Core drilling for services	100% complete	100% complete
Riser installation	100% complete	100% complete
Lift installation	98% complete	98% complete
Above ground drainage	95% complete	95% complete
Partition walls installation	100% complete	100% complete
Apartment ceiling installation	100% complete	100% complete
Plaster finishes walls and ceilings	100% complete	100% complete
First fix electrical	100% complete	100% complete
First fix plumbing and heating	90% complete	57% complete
Kitchen units and appliances	60% complete	0% complete
Doorframes	70% complete	56% complete
Skirting and architrave	60% complete	38% complete
Bathroom sanitary fittings	60% complete	20% complete
Wall and floor tiling	60% complete	29% complete
Carpet and floor finishes	50% complete	23% complete
Doors and ironmongery	50% complete	0% complete
Decorations	50% complete	21% complete
Second fix electrical	60% complete	22% complete
Second fix plumbing and heating	60% complete	22% complete
General fixtures and fittings	0% complete	0% complete

Internal Fitout Progress

NOVEMBER 2021



New Secure site entrance



Partitions installation to circulation area complete

Internal Fitout Progress

NOVEMBER 2021



Segregation barriers installed to mass climber areas



Segregation barriers installed to mass climber areas

Internal Fitout Progress

OCTOBER 2021



Removal of old doors ongoing



Removal of old doors ongoing

Internal Fitout Progress

OCTOBER 2021



Window boards



Cladding rail

Internal Fitout Progress

OCTOBER 2021



Plasterboard & tiling material



Concrete manhole rings

Internal Fitout Progress

NOVEMBER 2021



Cladding screens



Forklift in operation

Internal Fitout Progress

NOVEMBER 2021



Cladding rail



Corex sheets onsite for floor protection

Internal Fitout Progress

NOVEMBER 2021

LEGACIE CONTRACTS

Daily Activity Briefing Board

Date 25-11-21

HAZARDS	SUBCONTRACTOR	WORKFORCE	LOCATION	DELIVERIES	
① MOST CHANGE TO WEST SOUTH ELEVATION	BAR CARDING	Don FROST P. SUBEISAK	2A WEST CORNER NE 07 2A WEST CORNER NE 7 2A WEST CORNER NE 6	2A WEST CORNER NE 5 2A WEST CORNER NE 6 2A WEST CORNER NE 7 2A WEST CORNER NE 8	Nov 22 nd
② Alter Mount Around SITE	SHWEO	NO DATA AVAILABLE			
③ SCISSOR LIFT TO BOSS 2	M.W.S.	1A SHERLOCK 1A SHERLOCK 1A SHERLOCK	Level 1, Level 2, Level 3, Level 4, Level 5, Level 6, Level 7, Level 8, Level 9, Level 10, Level 11, Level 12, Level 13, Level 14, Level 15, Level 16, Level 17, Level 18, Level 19, Level 20, Level 21, Level 22, Level 23, Level 24, Level 25, Level 26, Level 27, Level 28, Level 29, Level 30, Level 31, Level 32, Level 33, Level 34, Level 35, Level 36, Level 37, Level 38, Level 39, Level 40, Level 41, Level 42, Level 43, Level 44, Level 45, Level 46, Level 47, Level 48, Level 49, Level 50, Level 51, Level 52, Level 53, Level 54, Level 55, Level 56, Level 57, Level 58, Level 59, Level 60, Level 61, Level 62, Level 63, Level 64, Level 65, Level 66, Level 67, Level 68, Level 69, Level 70, Level 71, Level 72, Level 73, Level 74, Level 75, Level 76, Level 77, Level 78, Level 79, Level 80, Level 81, Level 82, Level 83, Level 84, Level 85, Level 86, Level 87, Level 88, Level 89, Level 90, Level 91, Level 92, Level 93, Level 94, Level 95, Level 96, Level 97, Level 98, Level 99, Level 100	THE ZSD	
	CODE	5A HARRISON 1A SHERLOCK	Level 1, Level 2, Level 3, Level 4, Level 5, Level 6, Level 7, Level 8, Level 9, Level 10, Level 11, Level 12, Level 13, Level 14, Level 15, Level 16, Level 17, Level 18, Level 19, Level 20, Level 21, Level 22, Level 23, Level 24, Level 25, Level 26, Level 27, Level 28, Level 29, Level 30, Level 31, Level 32, Level 33, Level 34, Level 35, Level 36, Level 37, Level 38, Level 39, Level 40, Level 41, Level 42, Level 43, Level 44, Level 45, Level 46, Level 47, Level 48, Level 49, Level 50, Level 51, Level 52, Level 53, Level 54, Level 55, Level 56, Level 57, Level 58, Level 59, Level 60, Level 61, Level 62, Level 63, Level 64, Level 65, Level 66, Level 67, Level 68, Level 69, Level 70, Level 71, Level 72, Level 73, Level 74, Level 75, Level 76, Level 77, Level 78, Level 79, Level 80, Level 81, Level 82, Level 83, Level 84, Level 85, Level 86, Level 87, Level 88, Level 89, Level 90, Level 91, Level 92, Level 93, Level 94, Level 95, Level 96, Level 97, Level 98, Level 99, Level 100	SHWEO TRC	
	MEIDAN	1A SHERLOCK 2A HARRISON 2A HARRISON	Level 1, Level 2, Level 3, Level 4, Level 5, Level 6, Level 7, Level 8, Level 9, Level 10, Level 11, Level 12, Level 13, Level 14, Level 15, Level 16, Level 17, Level 18, Level 19, Level 20, Level 21, Level 22, Level 23, Level 24, Level 25, Level 26, Level 27, Level 28, Level 29, Level 30, Level 31, Level 32, Level 33, Level 34, Level 35, Level 36, Level 37, Level 38, Level 39, Level 40, Level 41, Level 42, Level 43, Level 44, Level 45, Level 46, Level 47, Level 48, Level 49, Level 50, Level 51, Level 52, Level 53, Level 54, Level 55, Level 56, Level 57, Level 58, Level 59, Level 60, Level 61, Level 62, Level 63, Level 64, Level 65, Level 66, Level 67, Level 68, Level 69, Level 70, Level 71, Level 72, Level 73, Level 74, Level 75, Level 76, Level 77, Level 78, Level 79, Level 80, Level 81, Level 82, Level 83, Level 84, Level 85, Level 86, Level 87, Level 88, Level 89, Level 90, Level 91, Level 92, Level 93, Level 94, Level 95, Level 96, Level 97, Level 98, Level 99, Level 100	Nov 22 nd Nov 23 rd	
	A.W.H.	1A SHERLOCK 2A HARRISON 2A HARRISON	Level 1, Level 2, Level 3, Level 4, Level 5, Level 6, Level 7, Level 8, Level 9, Level 10, Level 11, Level 12, Level 13, Level 14, Level 15, Level 16, Level 17, Level 18, Level 19, Level 20, Level 21, Level 22, Level 23, Level 24, Level 25, Level 26, Level 27, Level 28, Level 29, Level 30, Level 31, Level 32, Level 33, Level 34, Level 35, Level 36, Level 37, Level 38, Level 39, Level 40, Level 41, Level 42, Level 43, Level 44, Level 45, Level 46, Level 47, Level 48, Level 49, Level 50, Level 51, Level 52, Level 53, Level 54, Level 55, Level 56, Level 57, Level 58, Level 59, Level 60, Level 61, Level 62, Level 63, Level 64, Level 65, Level 66, Level 67, Level 68, Level 69, Level 70, Level 71, Level 72, Level 73, Level 74, Level 75, Level 76, Level 77, Level 78, Level 79, Level 80, Level 81, Level 82, Level 83, Level 84, Level 85, Level 86, Level 87, Level 88, Level 89, Level 90, Level 91, Level 92, Level 93, Level 94, Level 95, Level 96, Level 97, Level 98, Level 99, Level 100	Nov 22 nd Nov 23 rd	
	E.E. INSPECTIONS	1A SHERLOCK 2A HARRISON 2A HARRISON	Level 1, Level 2, Level 3, Level 4, Level 5, Level 6, Level 7, Level 8, Level 9, Level 10, Level 11, Level 12, Level 13, Level 14, Level 15, Level 16, Level 17, Level 18, Level 19, Level 20, Level 21, Level 22, Level 23, Level 24, Level 25, Level 26, Level 27, Level 28, Level 29, Level 30, Level 31, Level 32, Level 33, Level 34, Level 35, Level 36, Level 37, Level 38, Level 39, Level 40, Level 41, Level 42, Level 43, Level 44, Level 45, Level 46, Level 47, Level 48, Level 49, Level 50, Level 51, Level 52, Level 53, Level 54, Level 55, Level 56, Level 57, Level 58, Level 59, Level 60, Level 61, Level 62, Level 63, Level 64, Level 65, Level 66, Level 67, Level 68, Level 69, Level 70, Level 71, Level 72, Level 73, Level 74, Level 75, Level 76, Level 77, Level 78, Level 79, Level 80, Level 81, Level 82, Level 83, Level 84, Level 85, Level 86, Level 87, Level 88, Level 89, Level 90, Level 91, Level 92, Level 93, Level 94, Level 95, Level 96, Level 97, Level 98, Level 99, Level 100	Nov 22 nd Nov 23 rd	
	ATTENDANCE	NOT ATTENDED			
	ATTENDANCE	1A SHERLOCK 2A HARRISON	Level 1, Level 2, Level 3, Level 4, Level 5, Level 6, Level 7, Level 8, Level 9, Level 10, Level 11, Level 12, Level 13, Level 14, Level 15, Level 16, Level 17, Level 18, Level 19, Level 20, Level 21, Level 22, Level 23, Level 24, Level 25, Level 26, Level 27, Level 28, Level 29, Level 30, Level 31, Level 32, Level 33, Level 34, Level 35, Level 36, Level 37, Level 38, Level 39, Level 40, Level 41, Level 42, Level 43, Level 44, Level 45, Level 46, Level 47, Level 48, Level 49, Level 50, Level 51, Level 52, Level 53, Level 54, Level 55, Level 56, Level 57, Level 58, Level 59, Level 60, Level 61, Level 62, Level 63, Level 64, Level 65, Level 66, Level 67, Level 68, Level 69, Level 70, Level 71, Level 72, Level 73, Level 74, Level 75, Level 76, Level 77, Level 78, Level 79, Level 80, Level 81, Level 82, Level 83, Level 84, Level 85, Level 86, Level 87, Level 88, Level 89, Level 90, Level 91, Level 92, Level 93, Level 94, Level 95, Level 96, Level 97, Level 98, Level 99, Level 100	Nov 22 nd Nov 23 rd	

WALL OF SHAME

Daily activity briefing board on entry to the building

SITE SAFETY STARTS HERE

HEALTH & SAFETY LAW

SITE INFORMATION

H & S POLICY

INSURANCE CERTIFICATES

FIRST AID

EMERGENCY CONTACT

SITE RULES

FIRE PLAN

FIRE ACTION

SITE CONTACTS

F10

PERMIT REQUIREMENTS

GENERAL INFORMATION

LEGACIE CONTRACTS

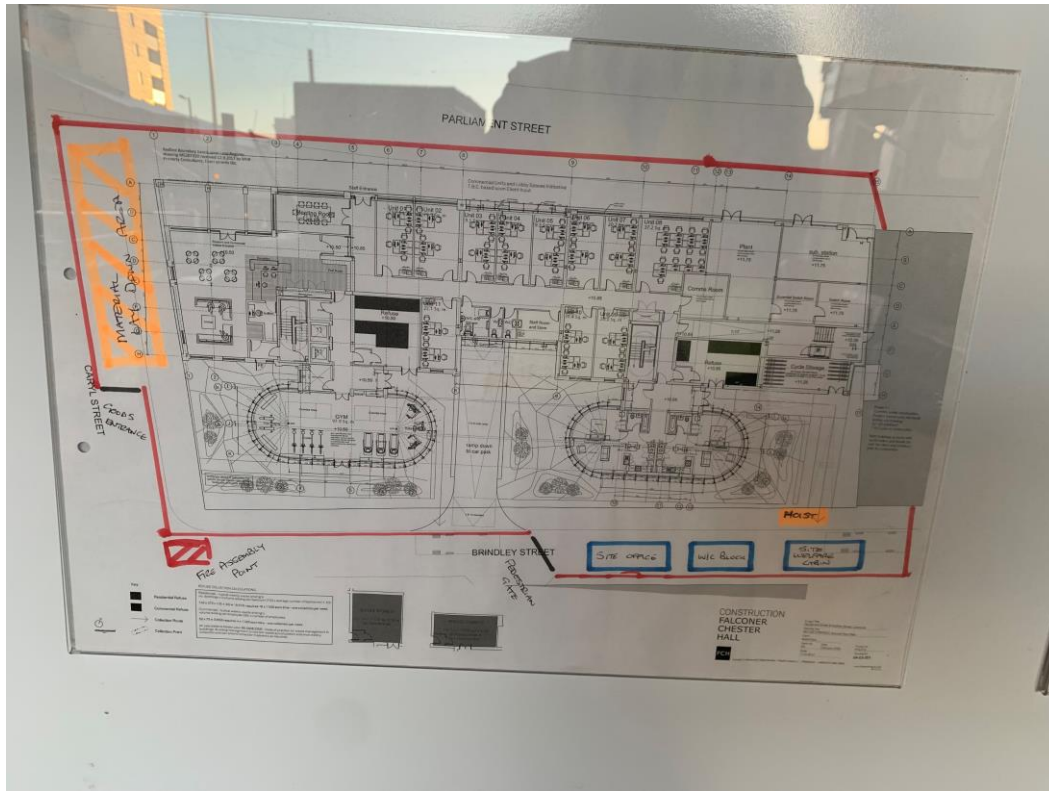
Alan Drake
Project Manager
Mob No 0746242885

Kevin Connelley
Site Manager
Mob No 0746242885

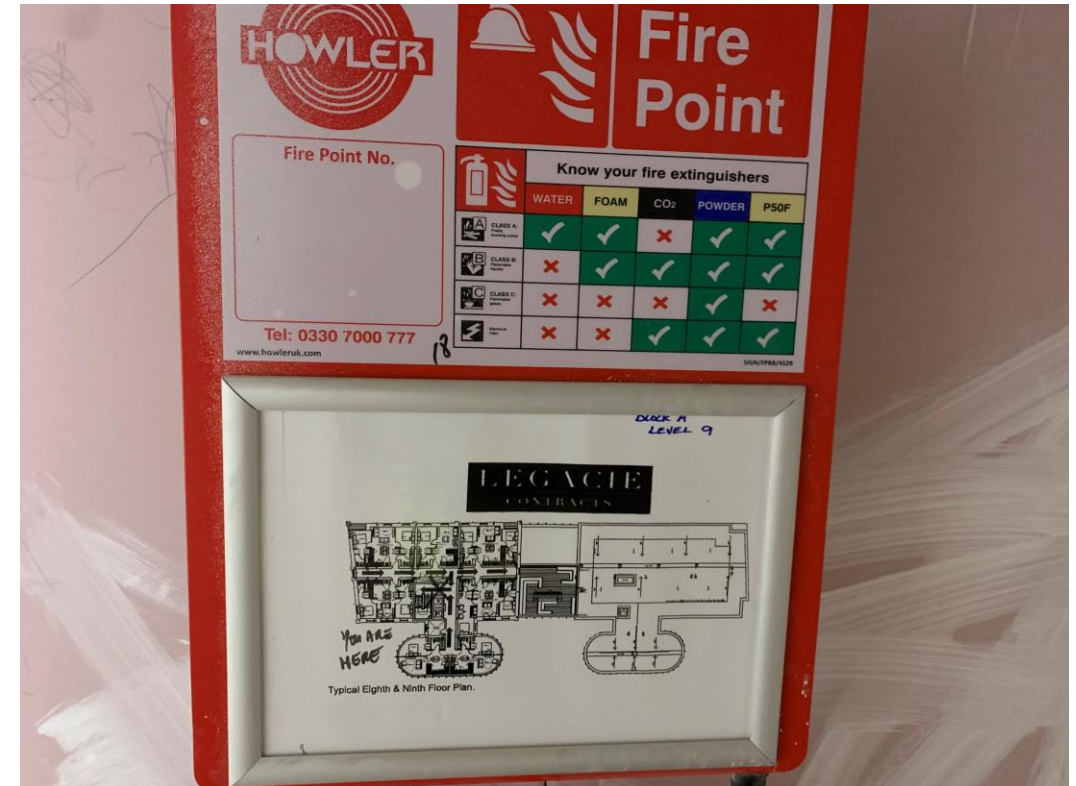
Safety signs on entry to the building

Internal Fitout Progress

NOVEMBER 2021



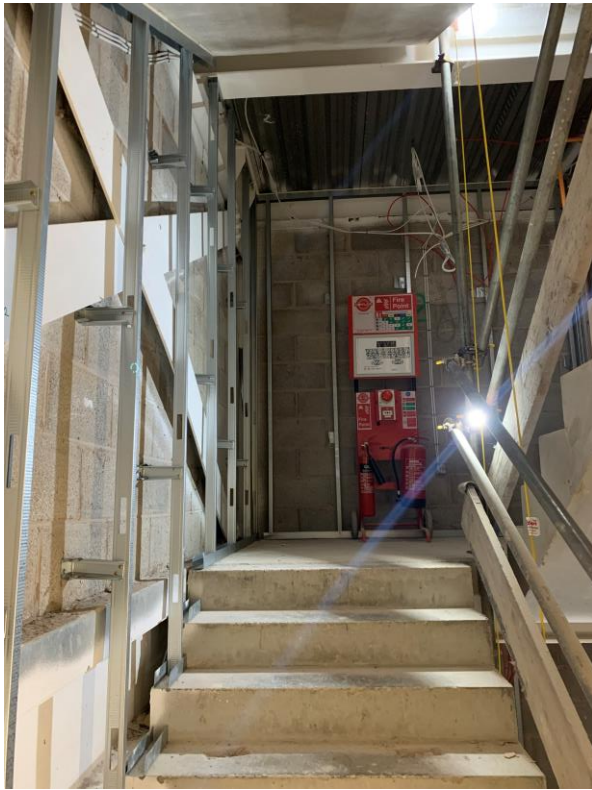
Site plan & layout on entry to the building



Fire points on entry to every level

Internal Fitout Progress

NOVEMBER 2021



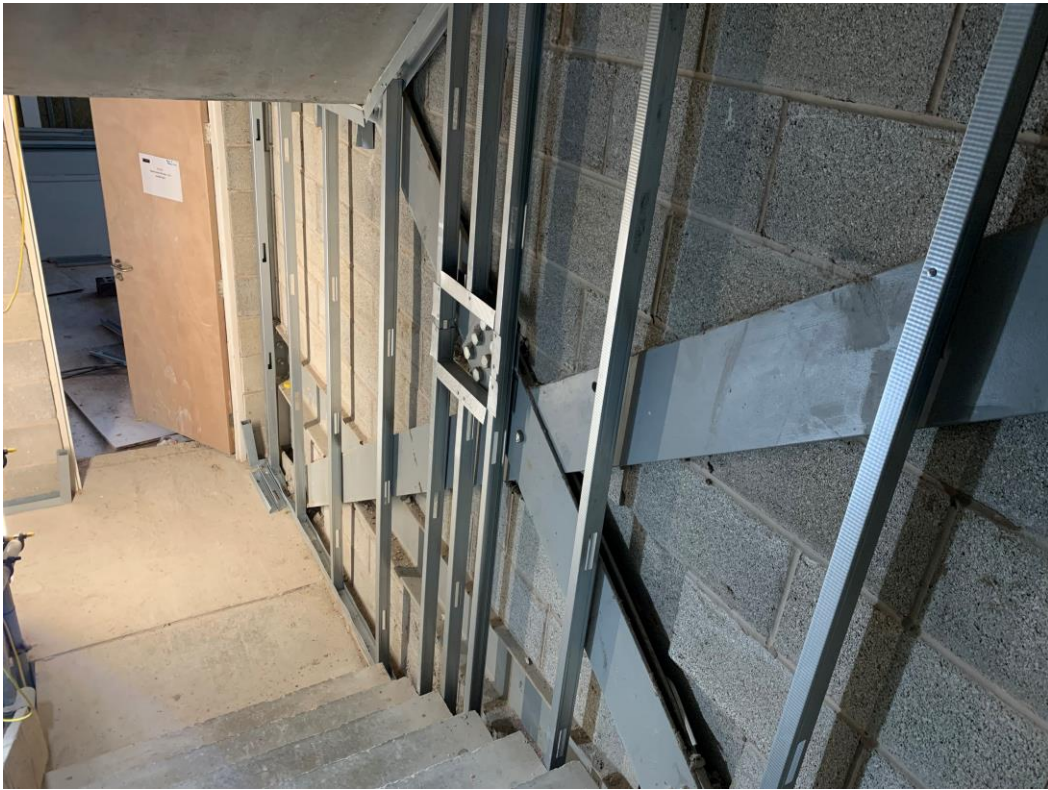
Partitions installed to stair case



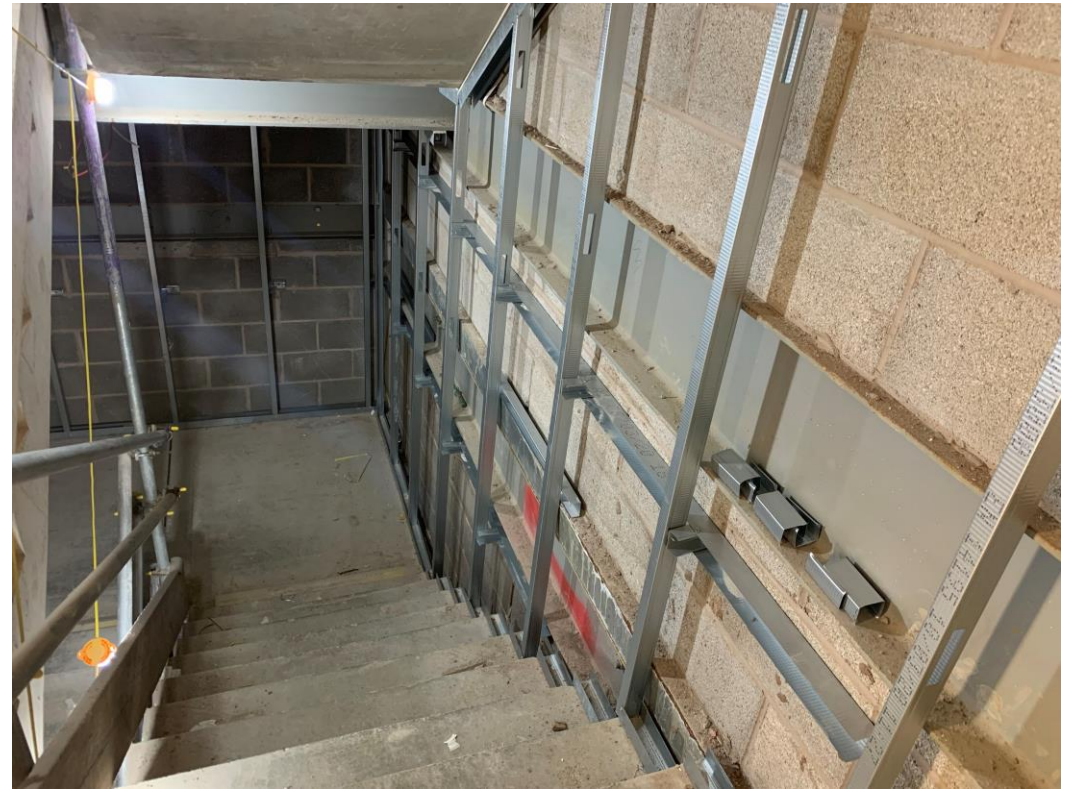
Partitions installed to stair case

Internal Fitout Progress

NOVEMBER 2021



Partitions installed to stair case



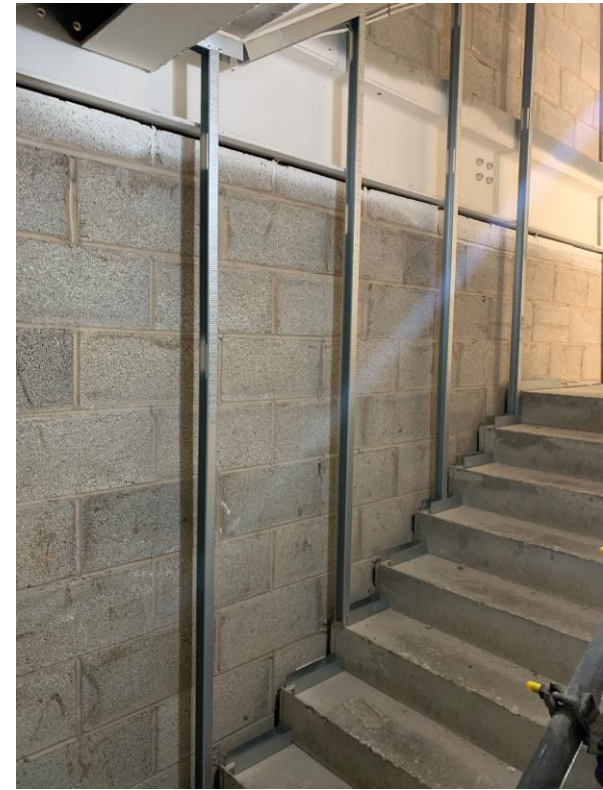
Partitions installed to stair case

Internal Fitout Progress

NOVEMBER 2021



Partitions installed to stair case



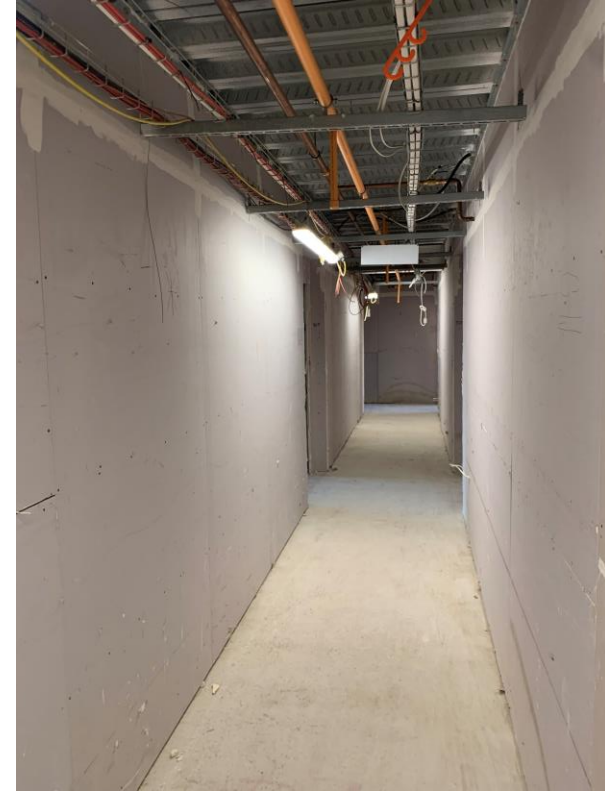
Partitions installed to stair case

Internal Fitout Progress

NOVEMBER 2021



Insulation & boarding of circulation areas ongoing



Boarding to circulation areas ongoing

Internal Fitout Progress

NOVEMBER 2021



Air ventilation system



Air ventilation system

Internal Fitout Progress

NOVEMBER 2021



Fire stopping to apartment areas



Fire stopping to apartment areas

Internal Fitout Progress

NOVEMBER 2021



Fire stopping in apartment areas



Fire stopping in apartment areas

Internal Fitout Progress

NOVEMBER 2021



Boarding to circulation areas ongoing



Metal ceiling grid erected to circulation area

Internal Fitout Progress

NOVEMBER 2021



Walls & ceiling skimmed. Floor finishes installed & protected



Walls & ceiling skimmed

Internal Fitout Progress

NOVEMBER 2021



Ceilings boarded and walls skimmed to circulation areas



Ceiling grid erected to circulation area

Internal Fitout Progress

NOVEMBER 2021



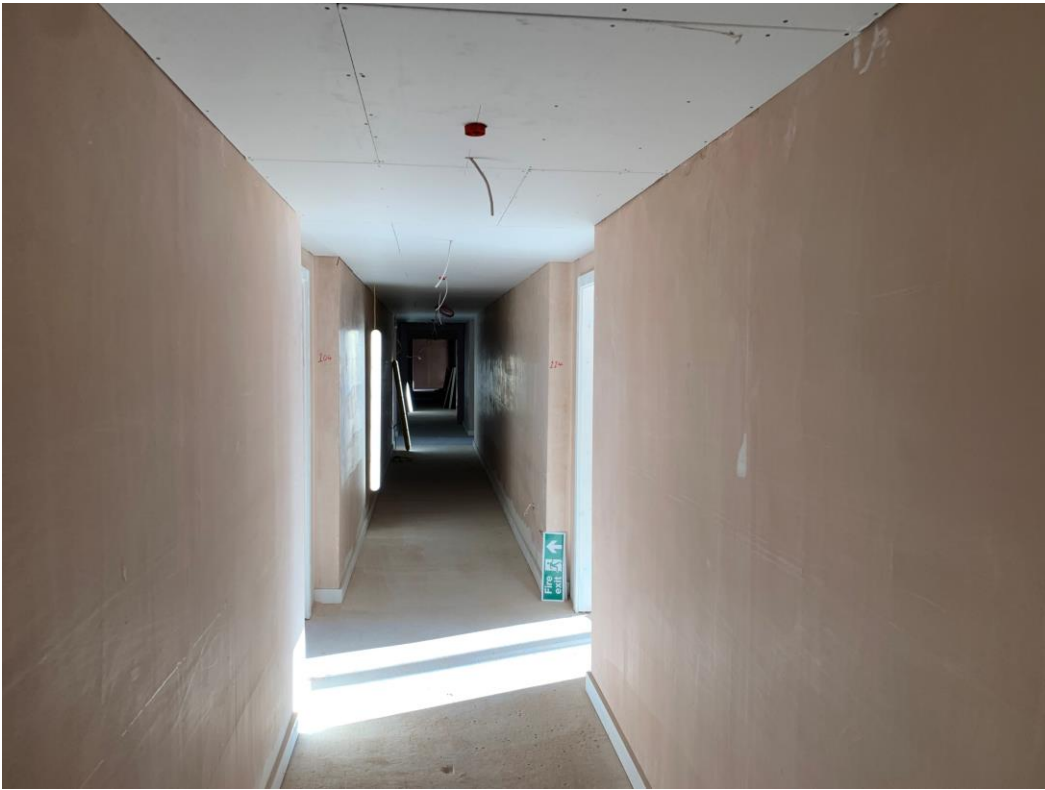
Celling grid installed to lift area



Lift area works ongoing

Internal Fitout Progress

NOVEMBER 2021



Ceilings boarded and walls skimmed to circulation areas



Ceilings boarded and walls skimmed to circulation areas

Internal Fitout Progress

NOVEMBER 2021



Jack & Jill bathroom door blocked up, boarded & skimmed



Jack & Jill bathroom door blocked up, boarded & skimmed

Internal Fitout Progress

NOVEMBER 2021



Flooring finishes installed & protected



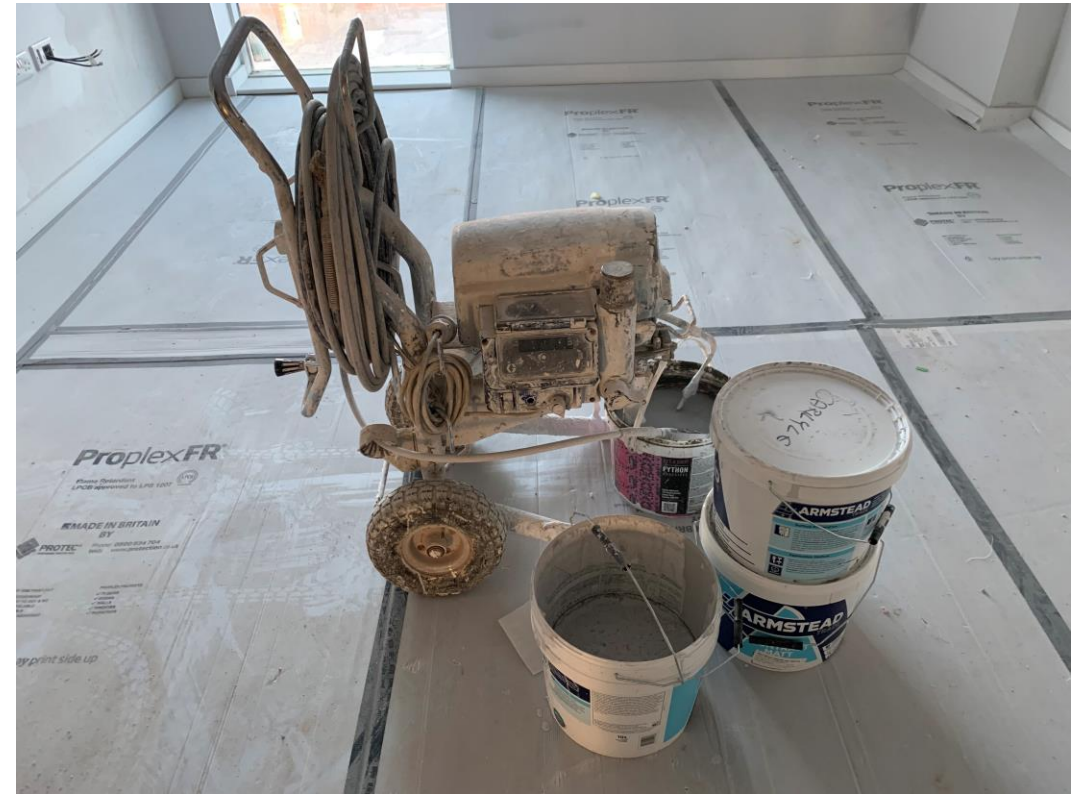
Door frames and architraves installed

Internal Fitout Progress

NOVEMBER 2021



Fire stopping in apartment areas



Fire stopping in apartment areas

Internal Fitout Progress

NOVEMBER 2021



1st Decoration coat to ceiling complete. Decoration to walls ongoing



Jack & Jill door bordered, skimmed and decorated

Internal Fitout Progress

NOVEMBER 2021



Removal of kitchen. Floor finishes installed & protected



Ceilings and walls 1st decoration coat. 2nd fix electrics ongoing

Internal Fitout Progress

NOVEMBER 2021



1st coat decoration to kitchen. 1st fix electrics ongoing



Ceilings and walls 1st decoration coat. Floor finishes installed & protected

Internal Fitout Progress

NOVEMBER 2021



Laminate floor installation



Laminate floor installation

Internal Fitout Progress

NOVEMBER 2021



Underlay for laminate flooring



Laminate flooring

Internal Fitout Progress

NOVEMBER 2021



1st fix electrics for sockets



1st fix electrics for spotlight

Internal Fitout Progress

NOVEMBER 2021



1st coat decoration to kitchen area



Door Linings, skirting board & architrave installed

Internal Fitout Progress

NOVEMBER 2021



Skirting boards, window boards installed. Floors finishes installed & protected



Skirting boards and window board installed. 1st coat decoration to woodwork complete

Internal Fitout Progress

NOVEMBER 2021



Skirting boards and window board installed



1st coat decoration to kitchen area

Internal Fitout Progress

NOVEMBER 2021



Ceilings and walls 1st decoration coat



Ceilings and walls 1st decoration coat. Floor finishes installed & protected

Internal Fitout Progress

NOVEMBER 2021



Ceilings and walls 1st decoration coat. Floor finishes installed & protected



Architraves & window bored installed. Floor finishes installed & protected

Internal Fitout Progress

NOVEMBER 2021



Tile ready for use



Tile installation

Internal Fitout Progress

NOVEMBER 2021



Bath installed. Ready for tiling



Bath, shower & WHB. Floor & wall tiling complete

Internal Fitout Progress

NOVEMBER 2021



Old bathroom arrangement



Bath, shower & WHB. Floor & wall tiling complete

Internal Fitout Progress

OCTOBER 2021



IPS boarded



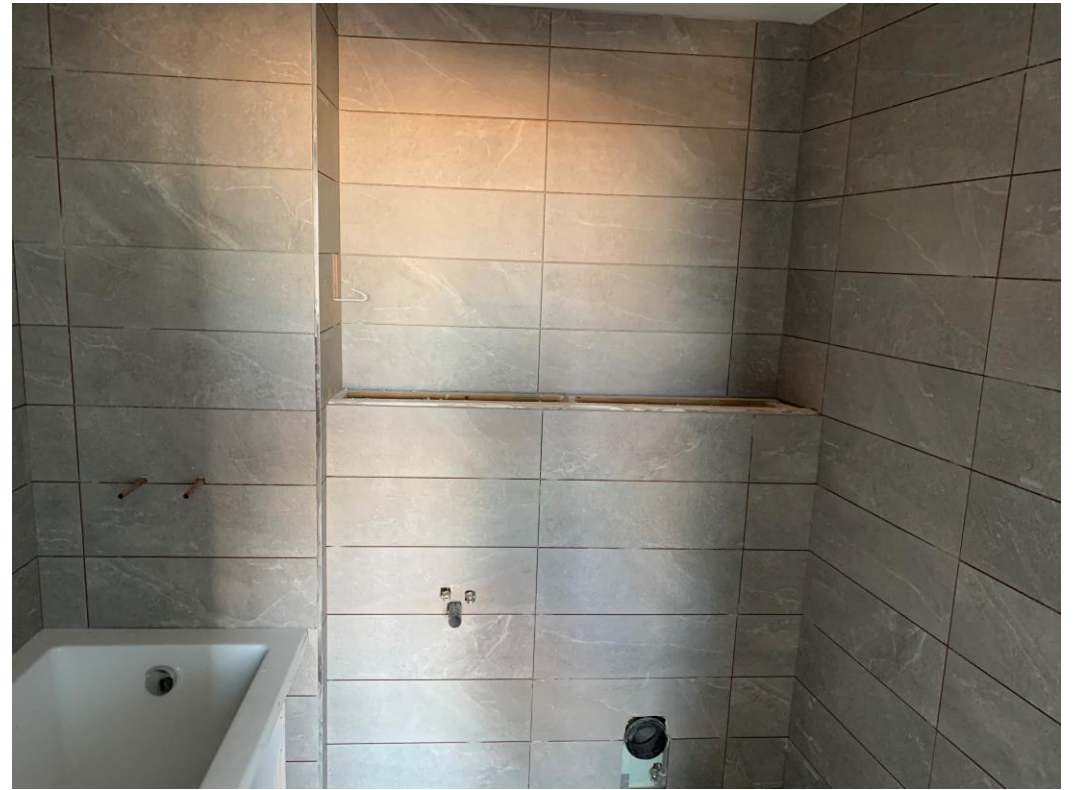
Bath installed. Tiling has commenced

Internal Fitout Progress

NOVEMBER 2021



IPS boarded. Bath installed



Bath installed. Floor & wall tiling complete

Internal Fitout Progress

NOVEMBER 2021



IPS boarded



Bath installed. Floor & wall tiling complete

Internal Fitout Progress

NOVEMBER 2021



Bath installed. Floor & wall tiling complete



Bath installed. Floor & wall tiling complete

Internal Fitout Progress

NOVEMBER 2021



New Cylinder system



Heating ventilation & cylinder system

Internal Fitout Progress

NOVEMBER 2021



New water cylinder



New water cylinder

Internal Fitout Progress

NOVEMBER 2021



Old heating ventilation



New heating ventilation system

TO FIND OUT MORE ABOUT

The Summit, Liverpool

PLEASE CONTACT

legacie

WWW.LEGACIE.CO.UK

By Appointment Only
Unit 4 Connect Business Village
Liverpool, L5 9PR
+44 (0) 151 207 9990