

legacie



The Summit Investors Report

IR03 October 2021

The Summit 144 Luxury Apartments



Schedule of Accommodation

Basement

- Car parking 45 no. spaces
- Lift access
- Plant

Ground Floor

- Commercial units
- Gymnasium
- 2 no. 1 Bedroom Apartments
- Comms Room
- Refuse store
- Cycle store
- Plant
- Sub-station
- Hard and soft landscaping

Floors 1 - 10

- 63 no. 1 Bedroom Apartments
- 79 no. 2 Bedroom Apartments
- Roof terraces

New Build Development to Create Residential Apartments Commercial Units & Basement Parking



Land at corner of Parliament Street & Caryl Street, Liverpool L8 5RW

The ten & eleven storey new build development generally comprises:

- Excavation and formation of new foundations
- Below and above ground drainage
- New ground supported and part suspended concrete floor slab
- New concrete ramp access to basement parking
- Ten and Eleven storey steel frame structure
- External clad and glazed envelope
- Suspended metal deck and concrete floors
- Flat roof structures and finishes
- Aluminium curtain walling, external windows and doors and shopfronts
- External balconies and balustrades
- Internal sub-division of commercial units, gym and apartments with non-loadbearing block and stud partitions
- Installation of plumbing services and mechanical services
- Installation of electrical services
- Installation of new lift car access
- Installation of kitchen and sanitary fittings
- New internal finishes, joinery fittings and decorations
- Repairs and making good building fabric and internal finishes to the partially completed building

Site Location



Aerial view of The Summit site location



Aerial view of The Summit site location

Building Structure

The Summit, Liverpool
New Build Development

Sub-Structure & Super-Structure Construction Progress

OCTOBER 2021

	Original Scheme	On-site Progression
Underground drainage	100% complete	100% complete
Floor slab construction	100% complete	100% complete
Steel frame structure	100% complete	100% complete
Upper suspended steel floor structure	100% complete	100% complete
Internal staircase structure	100% complete	100% complete
Sub-structure masonry walls	100% complete	100% complete
Fire coating steel framework	95% complete	95% complete
Fire coating repairs	0% complete	0% complete
Structural framework forming external walls	100% complete	100% complete
Scaffolding & mast climber access	100% complete	100% complete
Flat roof structure	100% complete	100% complete
Flat roof coverings including balconies	95% complete	95% complete
Weatherboarding	100% complete	100% complete
External windows /doors & curtain walling	90% complete	90% complete
External wall insulation & cladding	80% complete	80% complete
External wall insulation & cladding investigation & repair	0% complete	45% complete
Mansafe system	98% complete	98% complete

Sub-Structure & Super-Structure Progress

OCTOBER 2021



Development viewed Parliament Street



Development viewed Parliament Street

Sub-Structure & Super-Structure Progress

OCTOBER 2021



Development viewed Parliament Street



Development viewed from Parliament Street. External works ongoing

Sub-Structure & Super-Structure Progress

OCTOBER 2021



Development viewed from Parliament Street. External works ongoing



Development viewed from Caryl Street. External works ongoing

Sub-Structure & Super-Structure Progress

OCTOBER 2021



Development viewed from Caryl Street. External works ongoing



Cladding removal & insulation installation ongoing. Installation of new balcony doors ongoing

Sub-Structure & Super-Structure Progress

OCTOBER 2021



External cladding remedial works and reinstated



External cladding remedial works and reinstated

Sub-Structure & Super-Structure Progress

OCTOBER 2021



New curtain walling installation ongoing. Glazing installation ongoing



New curtain walling installation ongoing. Glazing installation ongoing

Sub-Structure & Super-Structure Progress

OCTOBER 2021



New fire barrier & cladding rail installation ongoing



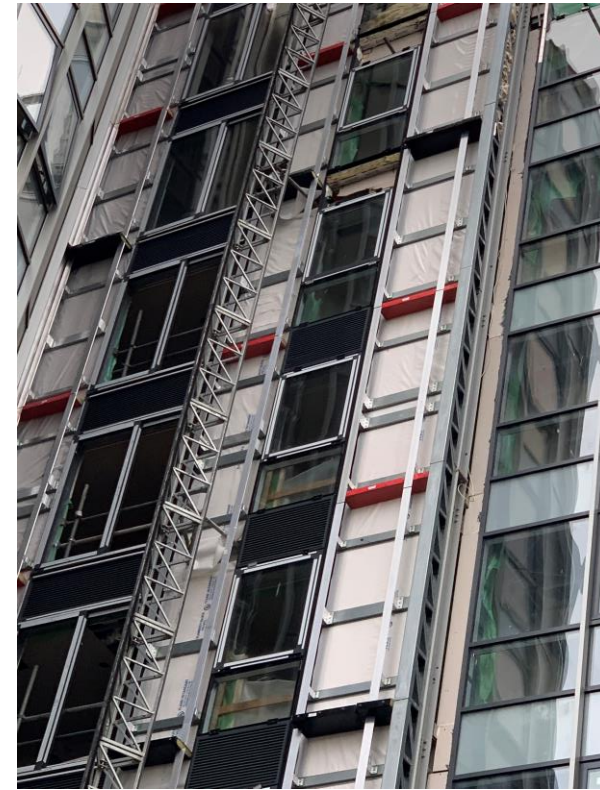
New fire barrier & cladding rail installation ongoing

Sub-Structure & Super-Structure Progress

OCTOBER 2021



New fire barrier & cladding rail installation ongoing



New fire barrier & cladding rail installation ongoing

Sub-Structure & Super-Structure Progress

OCTOBER 2021



Metal grill & window trim installation ongoing



Metal grill & window trim installation ongoing

Sub-Structure & Super-Structure Progress

OCTOBER 2021



New curtain walling and glazing installation to windows ongoing



Cherry picker on site

Sub-Structure & Super-Structure Progress

OCTOBER 2021



Ramp leading into basement



Site material storage

Sub-Structure & Super-Structure Progress

OCTOBER 2021



Site material storage



Site access from Brindley Street

Internal Fit-out

The Summit, Liverpool
New Build Development

Internal Fit-out Construction Progress

OCTOBER 2021

	Original Scheme	On-site Progression
Core drilling for services	100% complete	100% complete
Riser installation	100% complete	100% complete
Lift installation	98% complete	98% complete
Above ground drainage	95% complete	95% complete
Partition walls installation	100% complete	100% complete
Apartment ceiling installation	100% complete	100% complete
Plaster finishes walls and ceilings	100% complete	100% complete
First fix electrical	100% complete	100% complete
First fix plumbing and heating	90% complete	56% complete
Kitchen units and appliances	60% complete	0% complete
Doorframes	70% complete	29% complete
Skirting and architrave	60% complete	22% complete
Bathroom sanitary fittings	60% complete	8% complete
Wall and floor tiling	60% complete	6% complete
Carpet and floor finishes	50% complete	23% complete
Doors and ironmongery	50% complete	0% complete
Decorations	50% complete	3% complete
Second fix electrical	60% complete	20% complete
Second fix plumbing and heating	60% complete	20% complete
General fixtures and fittings	0% complete	0% complete

Internal Fitout Progress

OCTOBER 2021



Safety signs on entry to the building

Daily Activity Briefing Board				Date: 26-10-2021
HAZARDS	SUBCONTRACTOR	WORKFORCE	LOCATION	DELIVERIES
<ul style="list-style-type: none"> 1. Must Check to West South Elevation 2. Paint Movement Around Site 3. Check Access to Sunb Elevation 4. Second LFT to Break 2 	BAK CADDONS	10 FRAM 20 FRAMES	WORK ELEVATION NEW CLIMBER 1.4L 2MEN NEW " " " " 1.7x1.8 4MEN SUN " " " " 5.4C 4MEN	MAN - FRAME MUS E+E FRAME + Panel BATHS ??
	SUNSH	3MEN	Panel 1 - INTERNAL FRAMEWORK - INTERNAL GULLY	TUE - FRAME MUS TUES 3 PANELS
	CORG	6th FRAMES 1st LABOUR	CIF 5th 2MEN LEVEL 2-5 ROOM 1150,1160 2MEN 20000 LEVEL 6 BERRA 2MEN	WED M.O.F
	MEIDAN DASHIYAH	* SHAVE SWORDS 2 x 1 5 BOWMENTS.M		THUR
	E.E. INSPIRATIONS	6th FRAMES 2nd PLASTER	LEVEL 2 Room 5 4MEN LEVEL 2 Room 6 2MEN PM	
	M.N.S	4th 2MEN 1st LABORER	LEVEL 2 Room A 2MEN SHOWER ROOM A 2MEN	
	ATOMIC TITANS	3rd FRAMES	1 Level 2 2 Level 3	FRI FRAMES + MUSE SHOWER + LABS M.H.R
	LEGACIE			
	EUM	2 FRAMES	Level 6,7 Block H	

Daily activity briefing board on entry to the building

Internal Fitout Progress

OCTOBER 2021



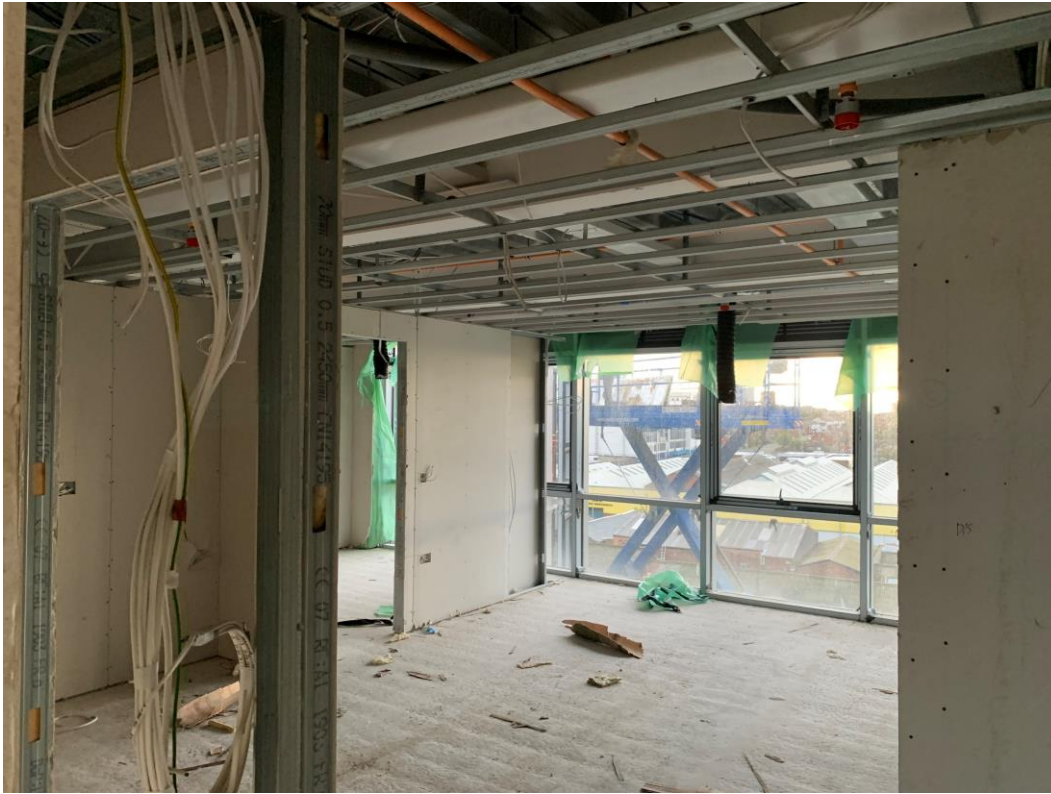
New stringer installation has commenced



New stringer installation has commenced

Internal Fitout Progress

OCTOBER 2021



Metal ceiling grid installation ongoing



Glazing installation ongoing

Internal Fitout Progress

OCTOBER 2021



Old Kitchen and boiler, prior to removal



New 1st fix electrics & plumbing. New skim of plaster

Internal Fitout Progress

OCTOBER 2021



New skim of plaster



1st fix electrics & plumbing. 1st coat of paint

Internal Fitout Progress

OCTOBER 2021



New skim of plaster



New skim of plaster

Internal Fitout Progress

OCTOBER 2021



Jack & Jill bathroom door block ed up and boarded



Jack & Jill bathroom door block ed up and boarded

Internal Fitout Progress

OCTOBER 2021



New skim of plaster



New skim of plaster

Internal Fitout Progress

OCTOBER 2021



New skim of plaster to lounge area of apartments



New skim of plaster to lounge area of apartment

Internal Fitout Progress

OCTOBER 2021



Door Linings, skirting board & architrave installation has commenced



Door Linings, skirting board & architrave installation has commenced

Internal Fitout Progress

OCTOBER 2021



Door Linings, skirting board & architrave installation has commenced



Door Linings, skirting board & architrave installation has commenced

Internal Fitout Progress

OCTOBER 2021



Door linings, skirting boards & architrave installation has commenced



Door linings, skirting boards & architrave installation has commenced

Internal Fitout Progress

OCTOBER 2021



Door linings installation has commenced



Paint spraying equipment & materials

Internal Fitout Progress

OCTOBER 2021



Ceilings and walls 1st decoration coat. Floor finishes installed & protected



Ceilings and walls 1st decoration coat

Internal Fitout Progress

OCTOBER 2021



Ceilings and walls 1st decoration coat



Ceilings and walls 1st decoration coat. Floor finishes installed & protected

Internal Fitout Progress

OCTOBER 2021



Ceilings and walls 1st decoration coat. Floor finishes installed & protected



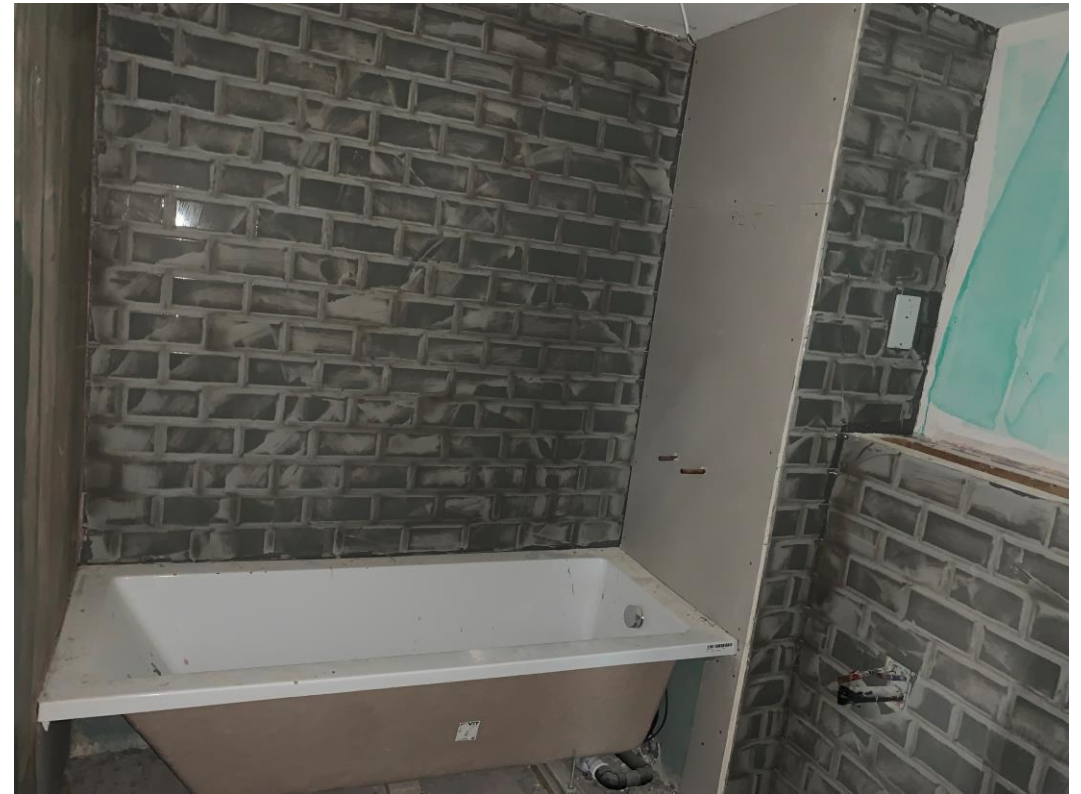
Floor finishes installed & protected

Internal Fitout Progress

OCTOBER 2021



2nd fix electric installation has commenced



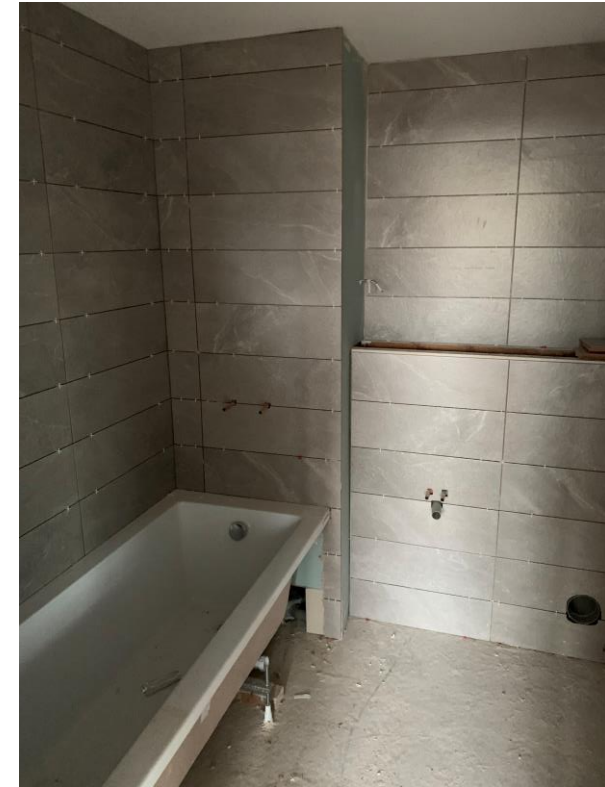
Replacement bath fittings installed and prepped for tiling

Internal Fitout Progress

OCTOBER 2021



Replacement bath fittings installed and prepped for tiling



New bathroom tile arrangements and bath installation ongoing

Internal Fitout Progress

OCTOBER 2021



Replacement bath fittings installed and prepped for tiling



New IPS installation ongoing

Internal Fitout Progress

OCTOBER 2021



Replacement bath fittings installed and prepped for tiling



New wall tiling commenced

Internal Fitout Progress

OCTOBER 2021



New bath & tile arrangement installation ongoing



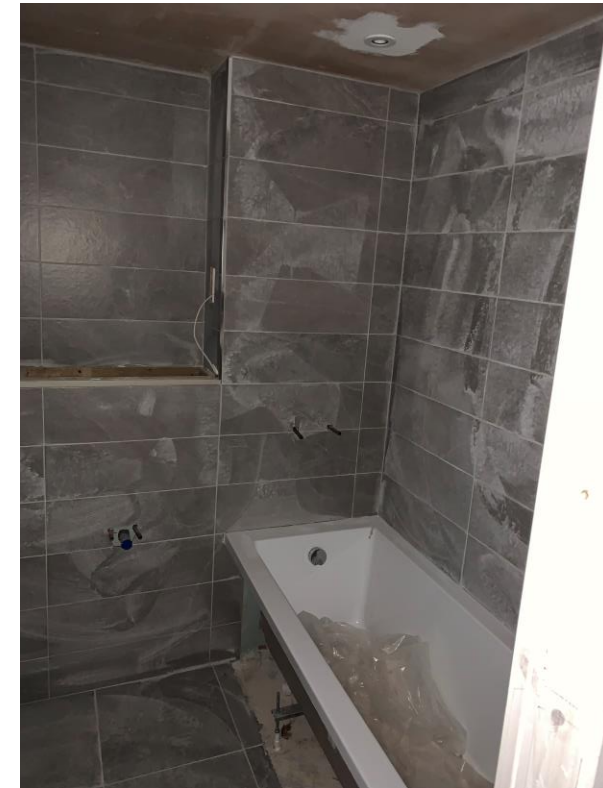
New vanity tile arrangement installation ongoing

Internal Fitout Progress

OCTOBER 2021



New bath & tile arrangement installation ongoing



New bath & tile arrangement installation ongoing

Internal Fitout Progress

OCTOBER 2021



New wall & floor tile arrangement installation ongoing



New wall & floor tile arrangement installation ongoing

Internal Fitout Progress

OCTOBER 2021



Shaving socket installed



Old heating ventilation and cylinder system

Internal Fitout Progress

OCTOBER 2021



Old heating ventilation system



New heating ventilation system installation commenced

Internal Fitout Progress

OCTOBER 2021



Material stored onsite ready for application



Metal partition material store onsite ready for installation

Internal Fitout Progress

OCTOBER 2021



Window frames stored onsite ready for installation



Window frames stored onsite ready for installation

Internal Fitout Progress

OCTOBER 2021



Baths stored onsite ready for installation



Baths stored onsite ready for installation

Internal Fitout Progress

OCTOBER 2021



Electrics metre room



Electrics metre room

Internal Fitout Progress

OCTOBER 2021



Tiles stored onsite ready for installation



Pipe insulation materials

TO FIND OUT MORE ABOUT

The Summit, Liverpool

PLEASE CONTACT

legacie

WWW.LEGACIE.CO.UK

By Appointment Only
Unit 4 Connect Business Village
Liverpool, L5 9PR
+44 (0) 151 207 9990