

legacie

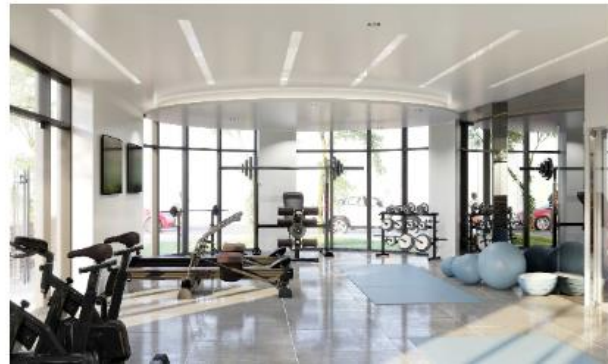


The Summit Investors Report

TR02 SEPTEMBER 2021

The Summit

144 Luxury Apartments



Schedule of Accommodation

Basement

- Car parking 45 no. spaces
- Lift access
- Plant

Ground Floor

- Commercial units
- Gymnasium
- 2 no. 1 Bedroom Apartments
- Comms Room
- Refuse store
- Cycle store
- Plant
- Sub-station
- Hard and soft landscaping

Floors 1 - 10

- 63 no. 1 Bedroom Apartments
- 79 no. 2 Bedroom Apartments
- Roof terraces

New Build Development to Create Residential Apartments Commercial Units & Basement Parking



Land at corner of Parliament Street & Caryl Street, Liverpool L8 5RW

The ten & eleven storey new build development generally comprises:

- Excavation and formation of new foundations
- Below and above ground drainage
- New ground supported and part suspended concrete floor slab
- New concrete ramp access to basement parking
- Ten and Eleven storey steel frame structure
- External clad and glazed envelope
- Suspended metal deck and concrete floors
- Flat roof structures and finishes
- Aluminium curtain walling, external windows and doors and shopfronts
- External balconies and balustrades
- Internal sub-division of commercial units, gym and apartments with non-loadbearing block and stud partitions
- Installation of plumbing services and mechanical services
- Installation of electrical services
- Installation of new lift car access
- Installation of kitchen and sanitary fittings
- New internal finishes, joinery fittings and decorations
- Repairs and making good building fabric and internal finishes to the partially completed building

Site Location



Aerial view of The Summit site location



Aerial view of The Summit site location

Building Structure

The Summit, Liverpool
New Build Development

Sub-Structure & Super-Structure Construction Progress

OCTOBER 2021

	Original Scheme	On-site Progression
Underground drainage	100% complete	100% complete
Floor slab construction	100% complete	100% complete
Steel frame structure	100% complete	100% complete
Upper suspended steel floor structure	100% complete	100% complete
Internal staircase structure	100% complete	100% complete
Sub-structure masonry walls	100% complete	100% complete
Fire coating steel framework	95% complete	95% complete
Fire coating repairs	0% complete	0% complete
Structural framework forming external walls	100% complete	100% complete
Scaffolding & mast climber access	100% complete	100% complete
Flat roof structure	100% complete	100% complete
Flat roof coverings including balconies	95% complete	95% complete
Weatherboarding	100% complete	100% complete
External windows /doors & curtain walling	90% complete	90% complete
External wall insulation & cladding	80% complete	80% complete
External wall insulation & cladding investigation & repair	0% complete	15% complete
Mansafe system	98% complete	98% complete

Sub-Structure & Super-Structure Progress

OCTOBER 2021



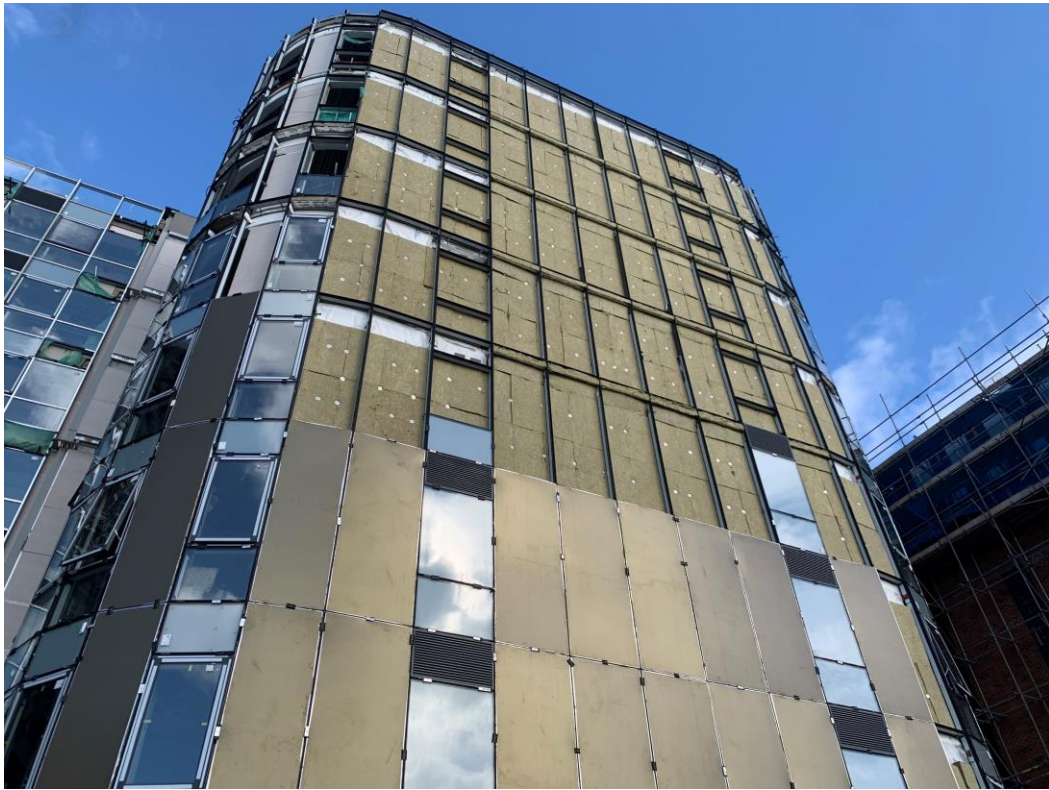
Development viewed from Brindley Street



Development viewed from Caryl street

Sub-Structure & Super-Structure Progress

OCTOBER 2021



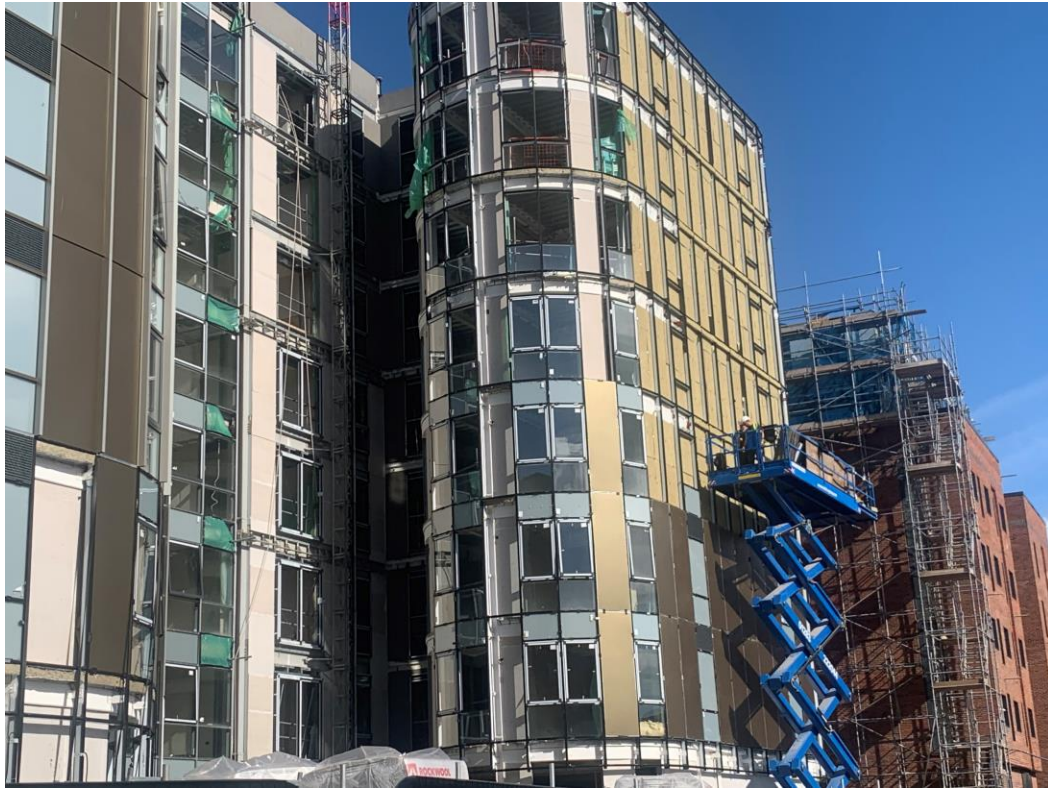
Removal of cladding, post inspection. Installation of insulation ongoing



Development viewed from Caryl Street. Cladding pre inspection.

Sub-Structure & Super-Structure Progress

OCTOBER 2021



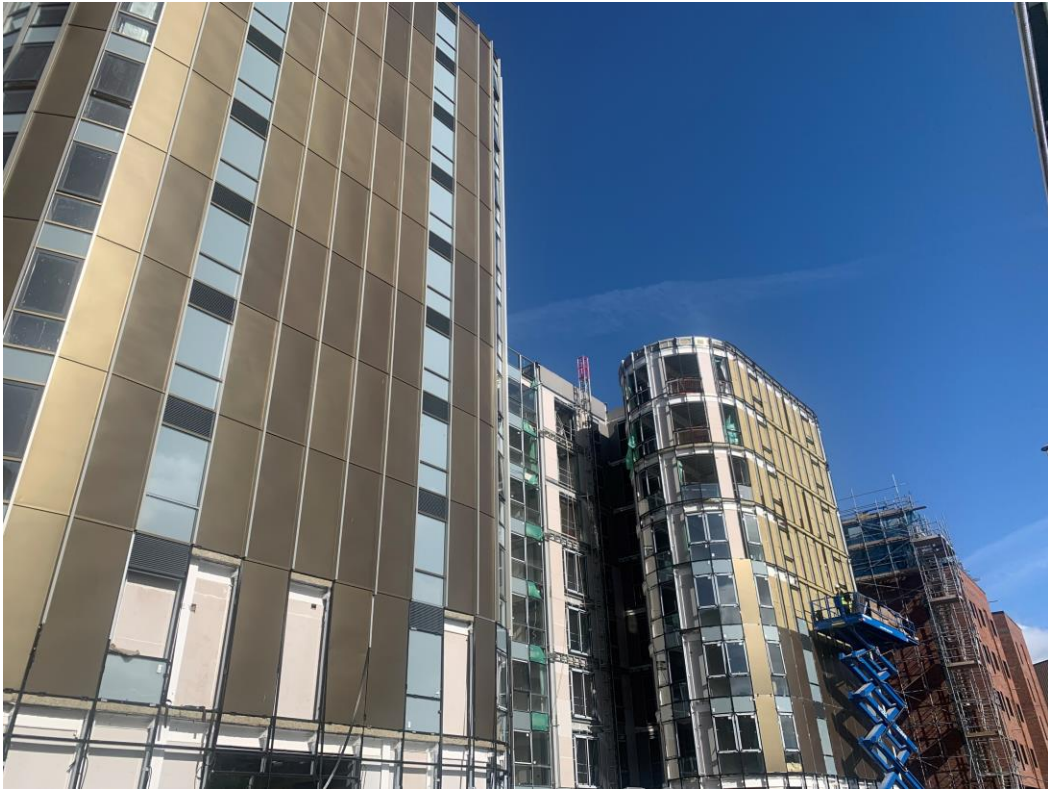
External cladding removal ongoing



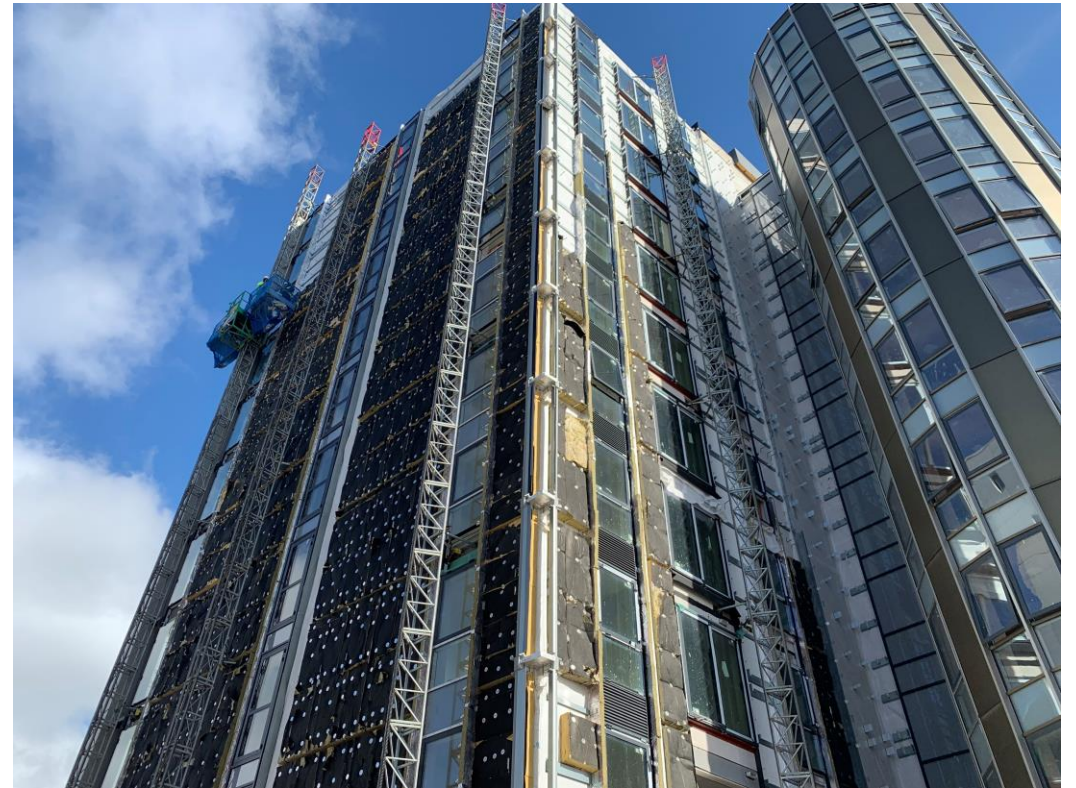
Development view from Brindley Street

Sub-Structure & Super-Structure Progress

OCTOBER 2021



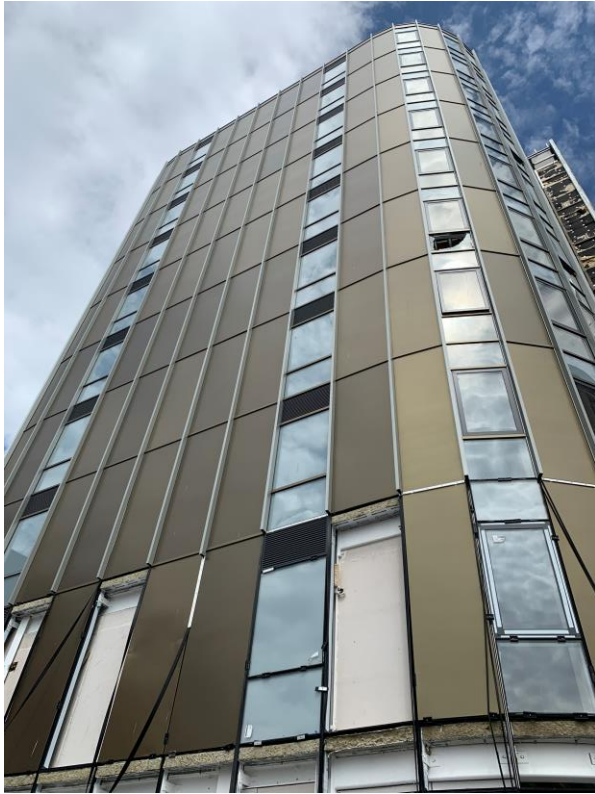
Cladding pre inspection



Post inspection. Cladding removal & insulation installation ongoing

Sub-Structure & Super-Structure Progress

OCTOBER 2021



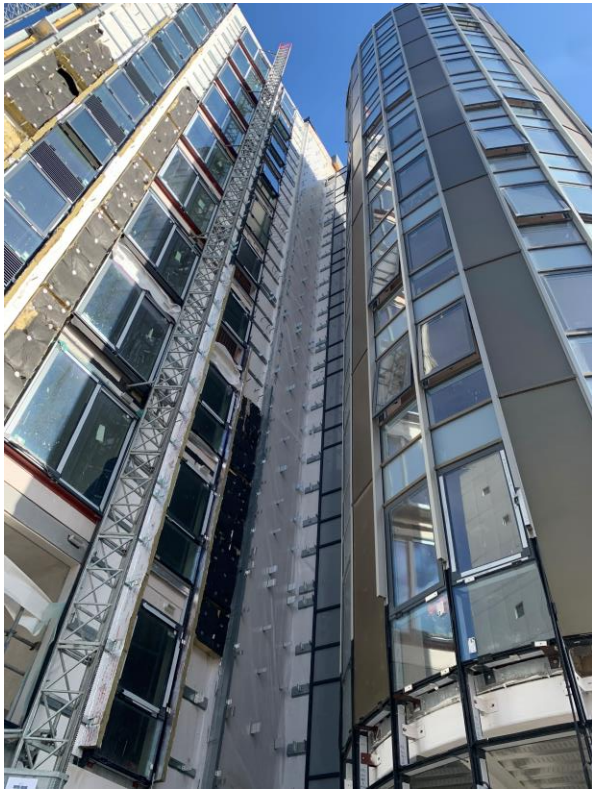
External cladding installed



External cladding installed

Sub-Structure & Super-Structure Progress

OCTOBER 2021



Mast climbers installation complete. Cladding removal ongoing



Hoist lift installation complete

Sub-Structure & Super-Structure Progress

OCTOBER 2021



Hoist lift installation complete



Scissor lift on site

Sub-Structure & Super-Structure Progress

OCTOBER 2021



Scissor lift onsite



Scissor lift in use

Sub-Structure & Super-Structure Progress

OCTOBER 2021



Cladding material storage



Site material storage

Sub-Structure & Super-Structure Progress

OCTOBER 2021



Site material storage



Site material storage

Sub-Structure & Super-Structure Progress

OCTOBER 2021



Site material storage



Site material storage

Sub-Structure & Super-Structure Progress

OCTOBER 2021



Site barriers and security from Caryl Street



Site access from Brindley Street

Sub-Structure & Super-Structure Progress

OCTOBER 2021



Development access road viewed from Caryl Street



Site Access from Caryl Street

Internal Fit-out

The Summit, Liverpool
New Build Development

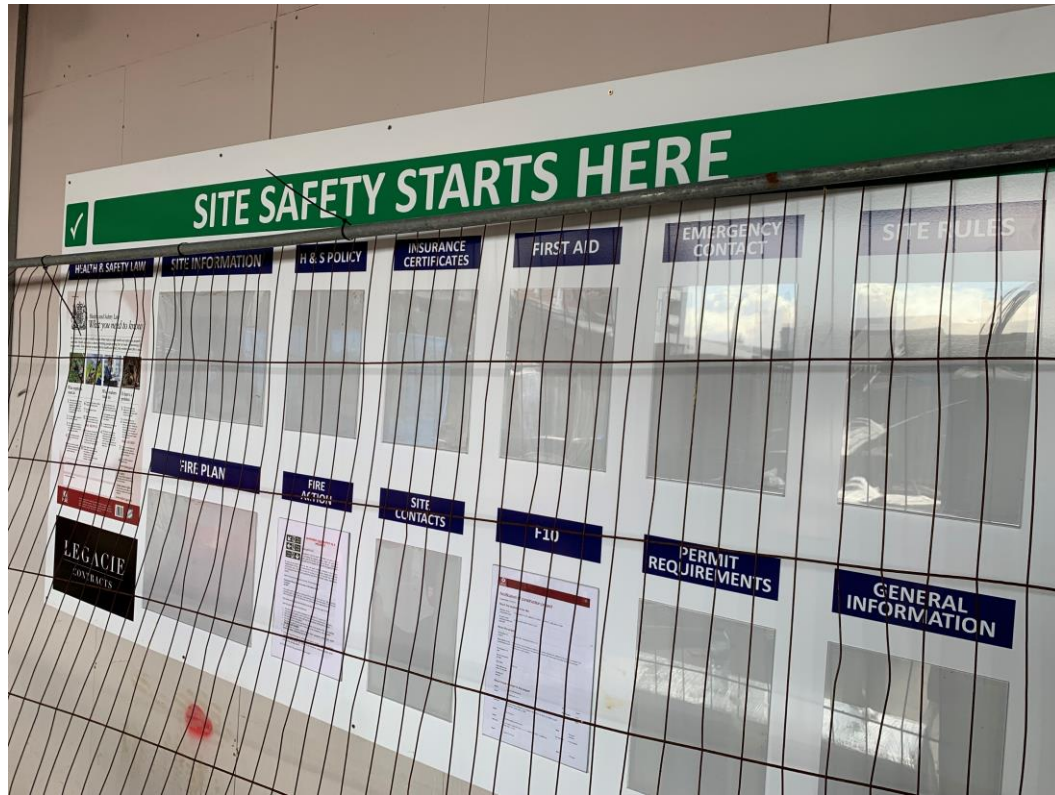
Internal Fit-out Construction Progress

OCTOBER 2021

	Original Scheme	On-site Progression
Core drilling for services	100% complete	100% complete
Riser installation	100% complete	100% complete
Lift installation	98% complete	98% complete
Above ground drainage	95% complete	95% complete
Partition walls installation	100% complete	100% complete
Apartment ceiling installation	100% complete	100% complete
Plaster finishes walls and ceilings	100% complete	100% complete
First fix electrical	100% complete	100% complete
First fix plumbing and heating	90% complete	0% complete
Kitchen units and appliances	60% complete	0% complete
Doorframes	70% complete	0% complete
Skirting and architrave	60% complete	0% complete
Bathroom sanitary fittings	60% complete	0% complete
Wall and floor tiling	60% complete	1% complete
Carpet and floor finishes	50% complete	10% complete
Doors and ironmongery	50% complete	0% complete
Decorations	50% complete	0% complete
Second fix electrical	60% complete	60% complete
Second fix plumbing and heating	60% complete	0% complete
General fixtures and fittings	0% complete	0% complete

Internal Fitout Progress

OCTOBER 2021



Safety signs on entry to the building

LEGACIE CONTRACTS		Daily Activity Briefing Board			Date 01-10 -2021
HAZARDS	SUBCONTRACTOR	WORKFORCE	LOCATION	DELIVERIES	
① ERECTION OF FIRST TO SIXTH ELEVATION <u>PERMIT ACCESS ONLY</u> ② FIRST CUMBER IN OPERATION TO WEST ELEVATION <u>PERMIT ACCESS ONLY</u> ③ FIRST CUMBER N° 12 ④ FIRST CUMBER INSTALLED	M.W.S.	3 rd JOINERS	LEVEL 3 SCAFFOLDS + ABC'S x 1 LEVEL 6 BATHROOM FRAMES x 2	27-09-21	
	B.A.K. CRODDING	2 nd INSTALLERS 1 st P.M.	2 nd FIRST CUMBER 7 th WEST ELEVATION 2 nd FIRST CUMBER 8 th SOUTH WEST ELEVATION	WINDOWS TOLAK SANDRA } 27-09-21	
	CORE MECH	6 th PUMPS	LEVEL 6 INSTALLATION BARGE LEVEL 5 AERIAL BEHAVIOR PIPEWORK	28-09-21	
	A.W.H	2 nd INSTALLERS	LEVEL 3 AERIAL DUCTING		
	LEUNG	3 rd UTILITIES 1 st TIE-HANDLING ORDER	LEVEL 6 ROUGH TIES TO BATHROOMS 1 st CLEAN ROOMS LEVEL 2 - 4	29-09-21	
	SINORA	5 th INSTALLERS	INSTALL GUIDING TO BARGE 4 INSTALL PIPES TO BARGE 2		
	NIEBAU	3 rd ELECTRICIANS	LEVEL 1 2 nd FIRE ESCALS		
	E.E. INSTALLATIONS	2 nd ERECTORS	BORING DRILL RIGS + I.P.S. UP TO LEVEL 4+5	30-09-21 BOM = CASE	
				01-10-21 3 rd PIPES FOR KITCHEN A.M	

Daily activity briefing board on entry to the building

Internal Fitout Progress

OCTOBER 2021



Old Kitchen and boiler door, prior to removal



Kitchen 1st fix plumbing and electrics. Boiler door removed

Internal Fitout Progress

OCTOBER 2021



Old doors prior to removal



All doors removed throughout all apartment

Internal Fitout Progress

OCTOBER 2021



Old bathroom sanitary fittings & tiling



Sample wall tiling for the new bathroom suite

Internal Fitout Progress

OCTOBER 2021



Old bathroom tiling variations



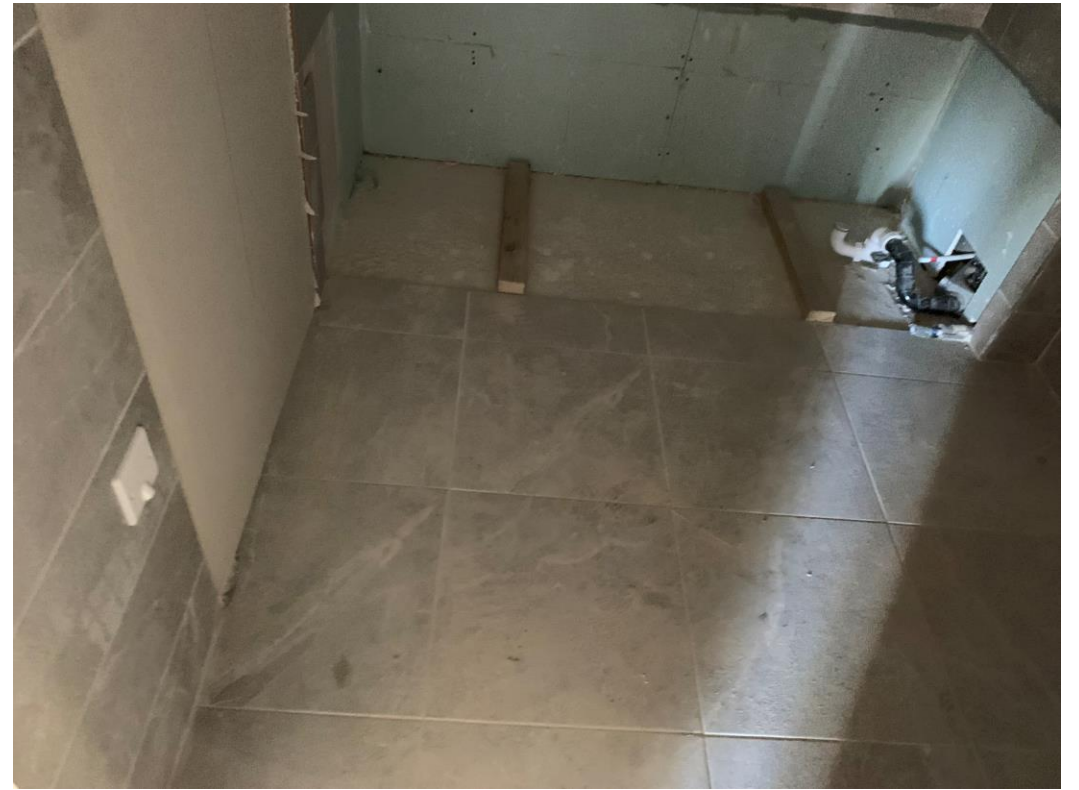
New bathroom tiling sample for shower area

Internal Fitout Progress

OCTOBER 2021



Old bathroom floor tiling variations



New bathroom floor tiling sample

Internal Fitout Progress

OCTOBER 2021



Old bathroom sanitary fittings & wall tiling variation



New bathroom sanitary fitting installation ongoing

Internal Fitout Progress

OCTOBER 2021



Old bathroom sanitary fittings & tiling variation



New bathroom sanitary fittings installation ongoing

Internal Fitout Progress

OCTOBER 2021



Jack & Gill door entrance from the bedroom



Jack & Gill bathroom door removed and boarded on the bedroom side

Internal Fitout Progress

OCTOBER 2021



Jack & Gill door entrance from the bedroom



Jack & Gill bathroom door removed and boarded on the bedroom side

Internal Fitout Progress

OCTOBER 2021



Lounge area prior to floor installation



Floor finishes installed & protected

Internal Fitout Progress

OCTOBER 2021



Floor finishes installed & protected



Floor finishes installed & protected

Internal Fitout Progress

OCTOBER 2021



2nd Smoke detection and lighting ongoing



New 2nd fix electrics

Internal Fitout Progress

OCTOBER 2021



Kitchen removal ongoing



Kitchen removal complete

Internal Fitout Progress

OCTOBER 2021



Old Vent-Axia heating unit



Replacement mechanical heat ventilation installed

Internal Fitout Progress

OCTOBER 2021



Mechanical ventilation & water cylinder installed



Mechanical ventilation installed / kitchen commenced

Internal Fitout Progress

OCTOBER 2021



On-site material storage



Cladding insulation storage

Internal Fitout Progress

OCTOBER 2021



New skirting boards ready to be installed



New door frames ready to be installed

Internal Fitout Progress

OCTOBER 2021



New skirting boards and architrave being installed



Laminate flooring stored

Internal Fitout Progress

OCTOBER 2021



New doorframe being installed



Temporary fire doors installed to services cupboard

Internal Fitout Progress

OCTOBER 2021



Basement Plant room fit out ongoing



Basement Plant room fit out ongoing

Internal Fitout Progress

OCTOBER 2021



Basement Plant room fit out ongoing



Basement Plant room fit out ongoing

Internal Fitout Progress

OCTOBER 2021



Electrical services installation ongoing



Electrical services installation ongoing

TO FIND OUT MORE ABOUT

The Summit, Liverpool

PLEASE CONTACT

legacie

WWW.LEGACIE.CO.UK

By Appointment Only
Unit 4 Connect Business Village
Liverpool, L5 9PR
+44 (0) 151 207 9990