

legacie



Merchant's Wharf Investors Report

IR13 July 2022

Merchant's Wharf 196 Luxury Apartments



Schedule of Accommodation

Basement

- Car parking 46 no. spaces
- Lift access
- Plant

Ground Floor

- Commercial /retail units
- Gymnasium
- 5no. single storey & 4no. duplex Apartments
- Comms Room
- Refuse store
- Cycle store
- Plant
- Sub-station
- Hard and soft landscaping

Floors 1 - 9

- 87 no. 1 Bedroom Apartments
- 91 no. 2 Bedroom Apartments
- 18 no. 3 Bedroom Apartments
- Roof terraces

New Build Two Block Development to Create Residential Apartments Commercial Units & Underground Parking



Land at corner of Ordsall Lane, Dyer Street & Worrall Street, Salford, Manchester M5

The eleven storey new build development generally comprises:

- Demolition of adjoining structures and perimeter walls
- Site clearance and levelling
- Site investigations and trial holes
- Excavation and formation of new foundations
- Below and above ground drainage
- New ground supported and part suspended concrete floor slab
- Nine and Seven storey steel frame structure
- External clad and glazed envelope
- Suspended metal deck and concrete floors
- Flat roof structures and finishes
- Aluminium curtain walling, external windows and doors and shopfronts
- External balconies and balustrades
- Internal sub-division of commercial units and apartments with non-loadbearing block and stud partitions
- Installation of plumbing services and mechanical services
- Installation of electrical services
- Installation of new lift car access
- Installation of kitchen and sanitary fittings
- New internal finishes, joinery fittings and decorations

Site Location



Aerial view of Merchant's Wharf site location



Aerial view of Merchant's Wharf site location

Building Structure

Merchants Wharf, Salford
New Build Development

Sub-Structure & Super-Structure Construction Progress

JULY 2022

Piling foundations	100% complete
Retaining walls, concrete beam foundations	100% complete
Steel reinforcement concrete slab	100% complete
Ground floor slab construction	100% complete
Concrete frame structure	75% complete
Upper suspended concrete floor structure	73% complete
Concrete pour upper suspended floor structure	73% complete
Stair and lift core structure	54% complete
Sub-structure Masonry walls	20% complete
Fire coating steel framework	0% complete
Structural framework forming external walls	20% complete
Flat roof structure and covering	0% complete
Weatherboarding	10% complete
Brickwork to elevations	1% complete
Cladding installation	0% complete
Window & curtain walling installation	5% complete

Sub-Structure & Super-Structure Progress

JULY 2022



Oldfield Road view



Oldfield Road view

Sub-Structure & Super-Structure Progress

JULY 2022



Ordsall Lane site view



Ordsall Lane site view

Sub-Structure & Super-Structure Progress

JULY 2022



Ordsall Lane site view



Ordsall Lane site view

Sub-Structure & Super-Structure Progress

JULY 2022



Ordsall Lane site view



Ordsall Lane site view

Sub-Structure & Super-Structure Progress

JULY 2022



Ordsall Lane site view



Ordsall Lane site view

Sub-Structure & Super-Structure Progress

JULY 2022



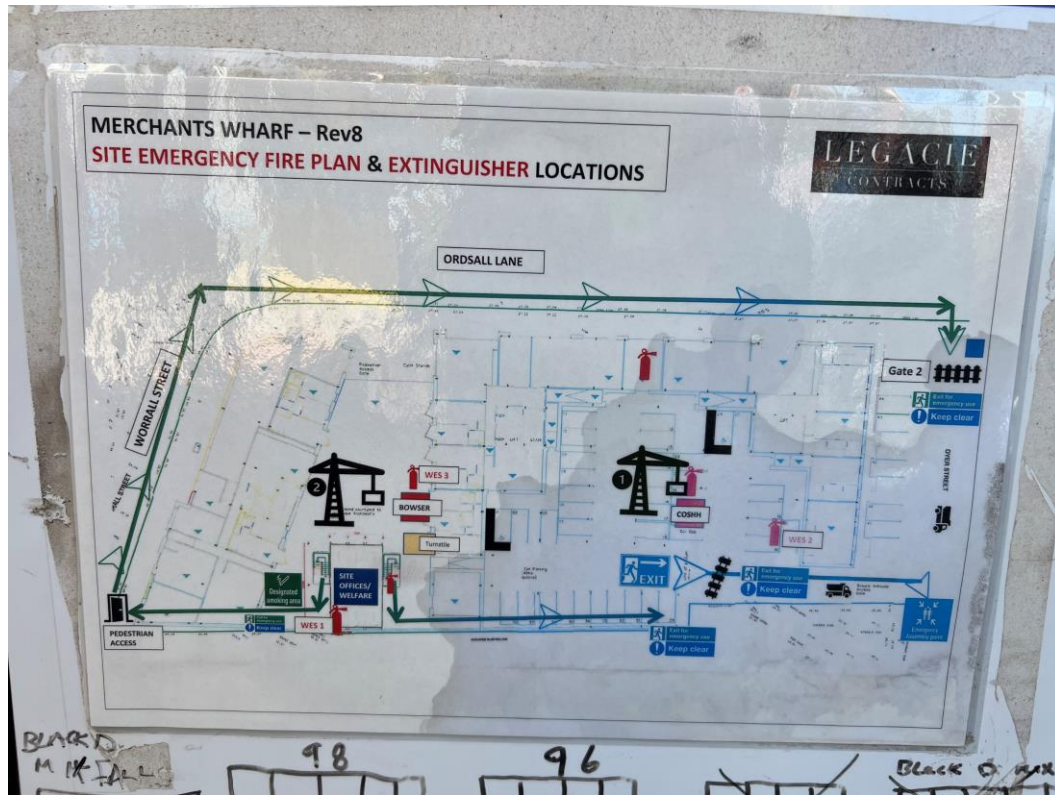
Worrall Street site view



Worrall Street site view

Sub-Structure & Super-Structure Progress

JULY 2022



Site emergency plan

FIRE ACTION

Fire Wardens are:

	Name:	Dan Burns
	Location:	Site/Office
	Tel:	01794 236058
	Name:	Martin Greenhalgh
	Location:	Office
	Tel:	01794 236110
	Name:	Adam Davies
	Location:	Site
	Tel:	01794 236110

SITE CONTACTS

	Project Manager Martin Greenhalgh		Site Manager TBC
	Project Engineer Paul Rawlinson		Site Administrator Sophie Precky
	Banksman/Logistics Adam Davies		Telehandler Op Peter Snowden

Site Fire Wardens

Sub-Structure & Super-Structure Progress

JULY 2022



Site emergency plan



Site emergency plan

Sub-Structure & Super-Structure Progress

JULY 2022



Block A & B concrete framework



Block A concrete framework

Sub-Structure & Super-Structure Progress

JULY 2022



Block A below ground drainage



Block A below ground drainage

Sub-Structure & Super-Structure Progress

JULY 2022



Block A & B attenuation drainage preparation



Block A & B attenuation drainage preparation

Sub-Structure & Super-Structure Progress

JULY 2022



Block A & B attenuation drainage preparation



Block A & B attenuation drainage preparation

Sub-Structure & Super-Structure Progress

JULY 2022



Block A SFS



Block A concrete framework

Sub-Structure & Super-Structure Progress

JULY 2022



Block A concrete framework



Block A concrete framework

Sub-Structure & Super-Structure Progress

JULY 2022



Block A concrete framework



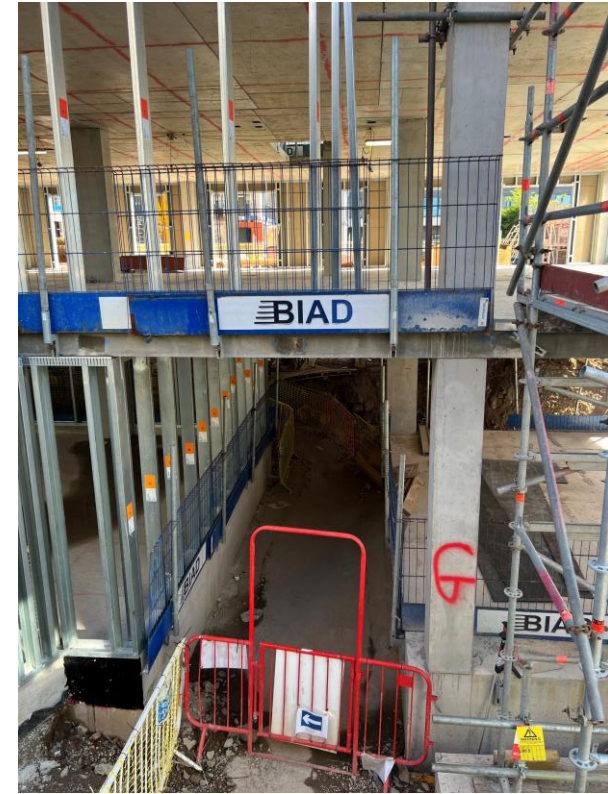
Block A concrete framework

Sub-Structure & Super-Structure Progress

JULY 2022



Block B concrete framework



Block B Entrance

Sub-Structure & Super-Structure Progress

JULY 2022



Block B ground floor



Block B ground floor

Sub-Structure & Super-Structure Progress

JULY 2022



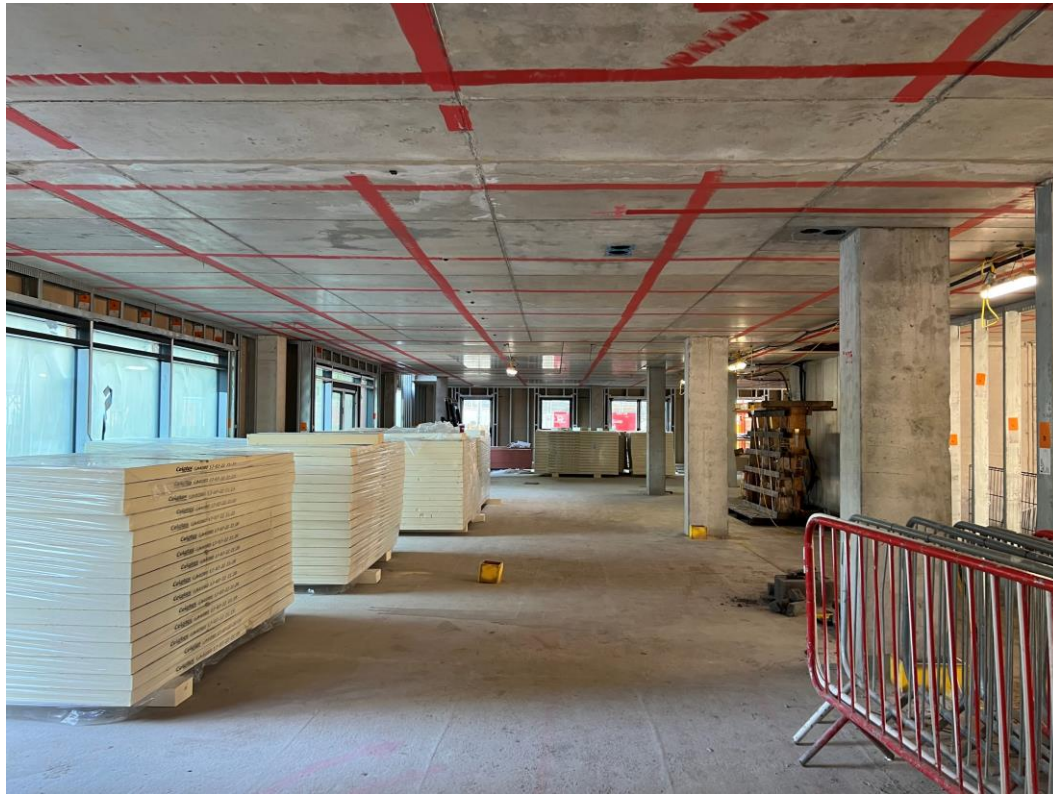
Block B SFS



Block B windows and doors

Sub-Structure & Super-Structure Progress

JULY 2022



Block B ground floor



Block B wall insulation stored

Sub-Structure & Super-Structure Progress

JULY 2022



Block B ground floor internal block wall



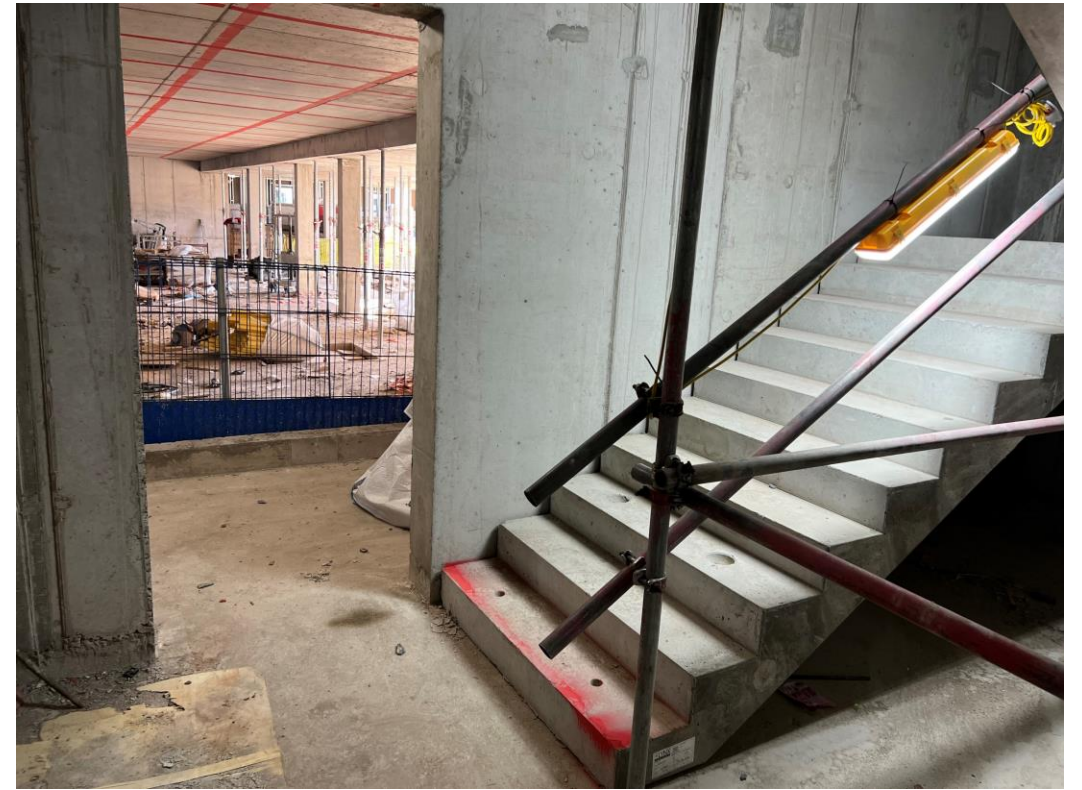
Block B stair and lift core

Sub-Structure & Super-Structure Progress

JULY 2022



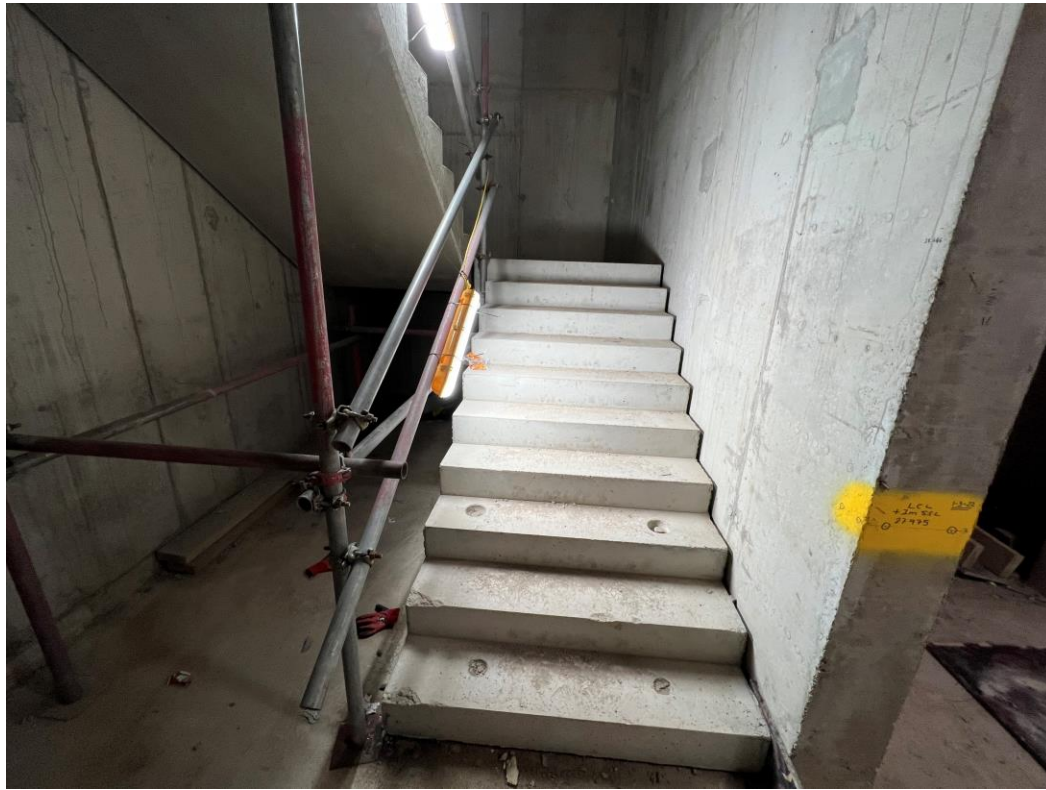
Block B stair core



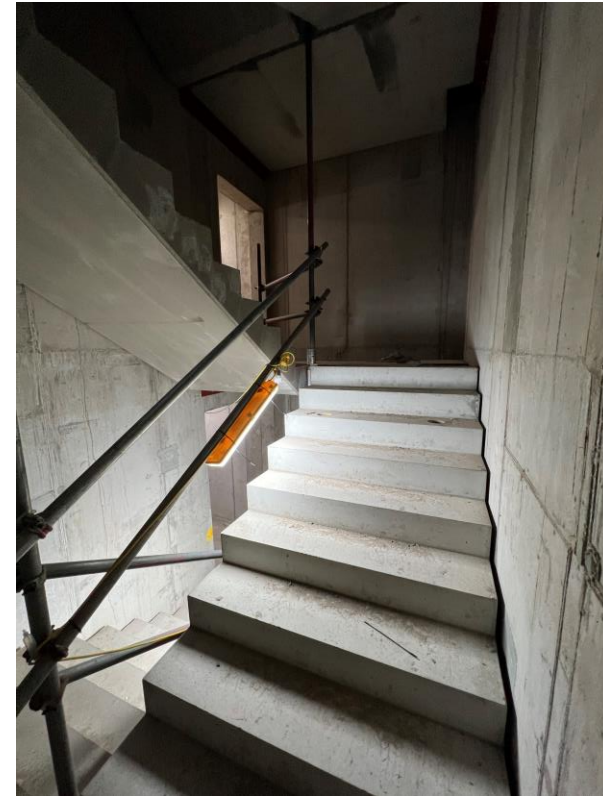
Block B concrete staircase

Sub-Structure & Super-Structure Progress

JULY 2022



Block B concrete staircase



Block B concrete staircase

Sub-Structure & Super-Structure Progress

JULY 2022



Block B concrete staircase



Block B concrete staircase

Sub-Structure & Super-Structure Progress

JULY 2022



Block B First Floor concrete structure



Block B First Floor concrete structure

Sub-Structure & Super-Structure Progress

JULY 2022



Block B First Floor stair and lift core



Block B First Floor SFS

Sub-Structure & Super-Structure Progress

JULY 2022



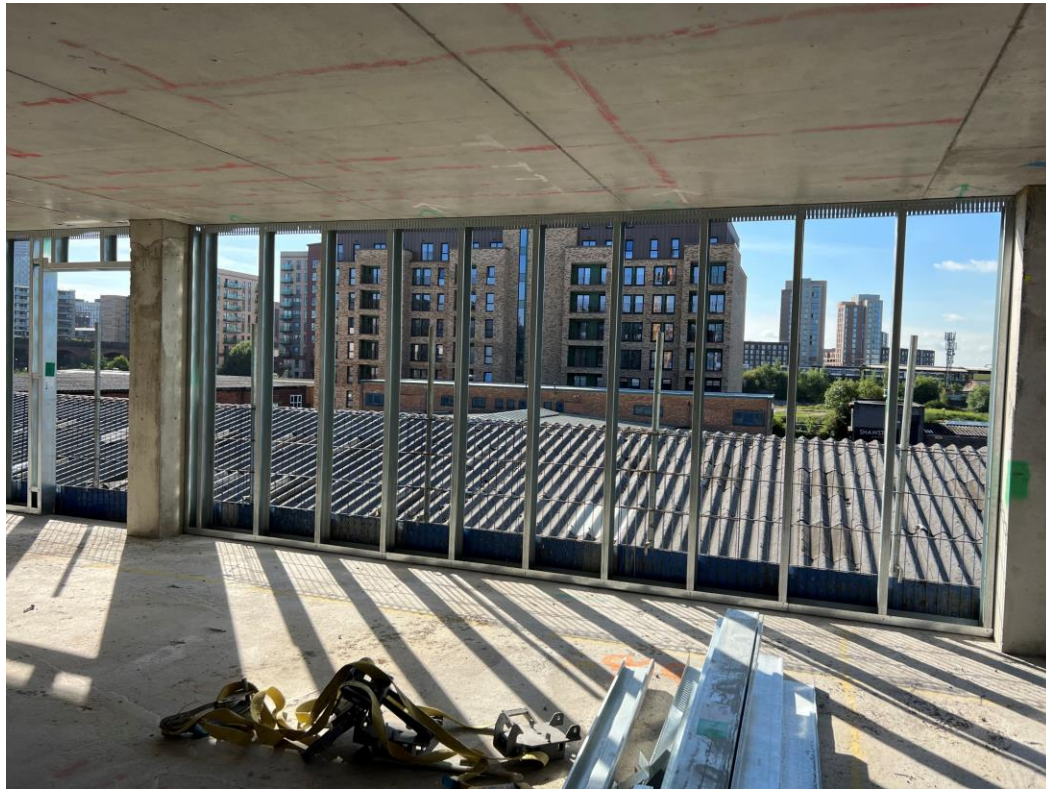
Block B Second Floor concrete structure



Block B Second Floor concrete structure

Sub-Structure & Super-Structure Progress

JULY 2022



Block B Second Floor SFS structure



Block B Second Floor SFS structure

Sub-Structure & Super-Structure Progress

JULY 2022



Block B Third Floor concrete structure



Block B Third Floor concrete structure

Sub-Structure & Super-Structure Progress

JULY 2022



Block B Third Floor SFS materials



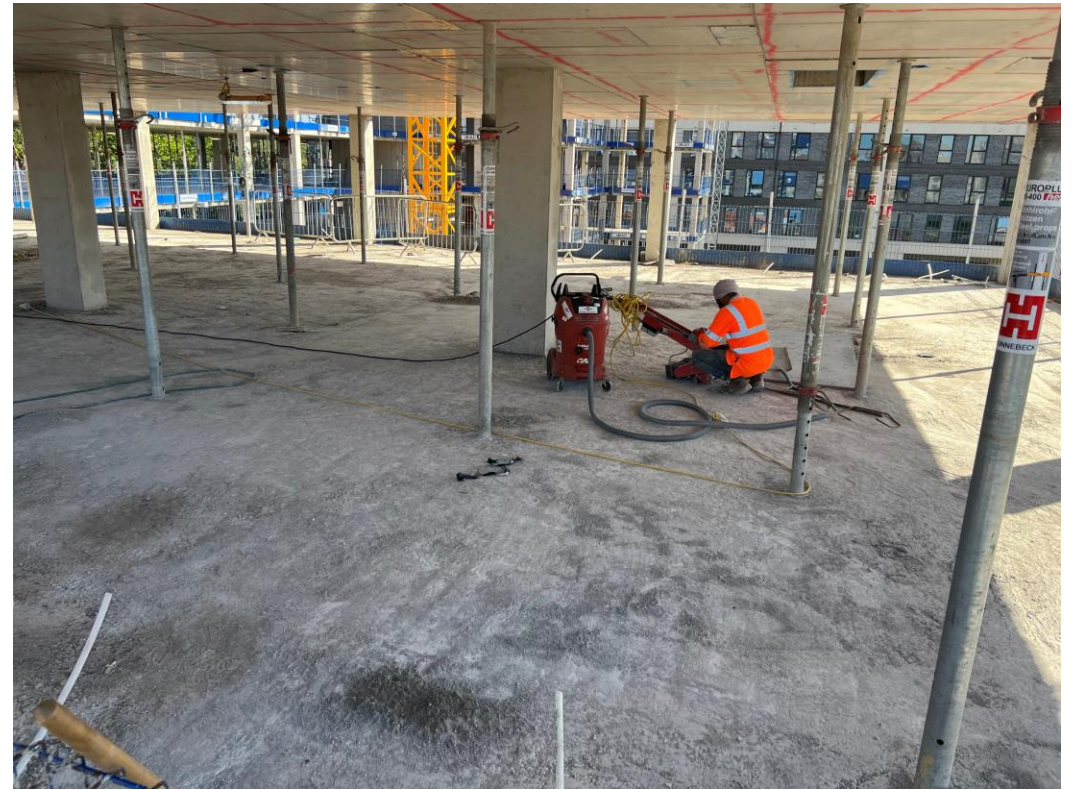
Block B Third Floor SFS materials

Sub-Structure & Super-Structure Progress

JULY 2022



Block B Fourth Floor concrete structure



Block B Fourth Floor concrete structure

Sub-Structure & Super-Structure Progress

JULY 2022



Block B Sub-structure brickwork



Block B Sub-structure brickwork

Sub-Structure & Super-Structure Progress

JULY 2022



Block B Sub-structure brickwork



Block B Sub-structure brickwork

Sub-Structure & Super-Structure Progress

JULY 2022



Block B Facing brickwork



Block B Facing brickwork

Sub-Structure & Super-Structure Progress

JULY 2022



Block B mast climber & hoist access installed



Block B Facing brickwork

Sub-Structure & Super-Structure Progress

JULY 2022



Block B hoist access installed



Block B weatherboarding

Sub-Structure & Super-Structure Progress

JULY 2022



Block B structure and weatherboarding



Block B structure and weatherboarding

Sub-Structure & Super-Structure Progress

JULY 2022



Block B structure and weatherboarding



Block B structure and weatherboarding

Sub-Structure & Super-Structure Progress

JULY 2022



Block B structure and weatherboarding



Block B structure and weatherboarding

Sub-Structure & Super-Structure Progress

JULY 2022



Block B structure and weatherboarding



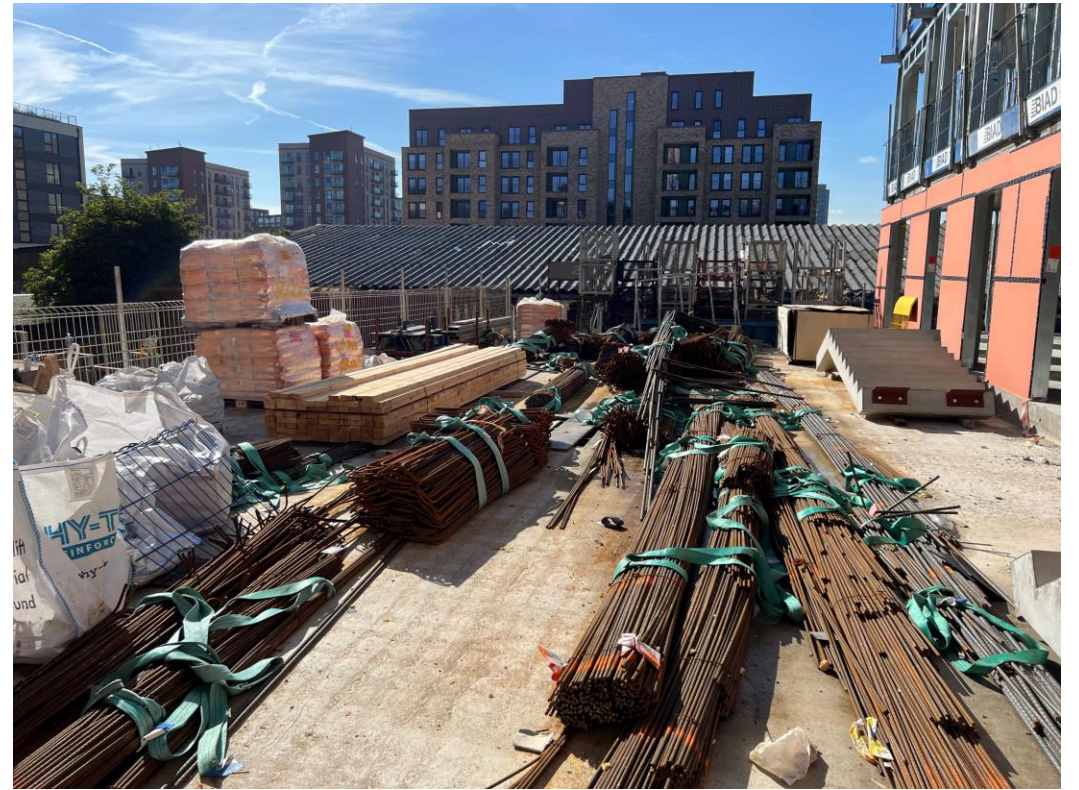
Block B structure and weatherboarding

Sub-Structure & Super-Structure Progress

JULY 2022



Block B staircase stored



Block B reinforcement stored

Sub-Structure & Super-Structure Progress

JULY 2022



Block B reinforcement stored



Block B temporary power

TO FIND OUT MORE ABOUT

Merchant's Wharf, Salford

PLEASE CONTACT

legacie

WWW.LEGACIE.CO.UK

By Appointment Only
Unit 4 Connect Business Village
Liverpool, L5 9PR
+44 (0) 151 207 9990