

legacie



Merchant's Wharf Investors Report

IR11 MAY 2022

Merchant's Wharf 196 Luxury Apartments



Schedule of Accommodation

Basement

- Car parking 46 no. spaces
- Lift access
- Plant

Ground Floor

- Commercial /retail units
- Gymnasium
- 5no. single storey & 4no. duplex Apartments
- Comms Room
- Refuse store
- Cycle store
- Plant
- Sub-station
- Hard and soft landscaping

Floors 1 - 9

- 87 no. 1 Bedroom Apartments
- 91 no. 2 Bedroom Apartments
- 18 no. 3 Bedroom Apartments
- Roof terraces

New Build Two Block Development to Create Residential Apartments Commercial Units & Underground Parking



Land at corner of Ordsall Lane, Dyer Street & Worrall Street, Salford, Manchester M5

The eleven storey new build development generally comprises:

- Demolition of adjoining structures and perimeter walls
- Site clearance and levelling
- Site investigations and trial holes
- Excavation and formation of new foundations
- Below and above ground drainage
- New ground supported and part suspended concrete floor slab
- Nine and Seven storey steel frame structure
- External clad and glazed envelope
- Suspended metal deck and concrete floors
- Flat roof structures and finishes
- Aluminium curtain walling, external windows and doors and shopfronts
- External balconies and balustrades
- Internal sub-division of commercial units and apartments with non-loadbearing block and stud partitions
- Installation of plumbing services and mechanical services
- Installation of electrical services
- Installation of new lift car access
- Installation of kitchen and sanitary fittings
- New internal finishes, joinery fittings and decorations

Site Location



Aerial view of Merchant's Wharf site location



Aerial view of Merchant's Wharf site location

Building Structure

Merchants Wharf, Salford
New Build Development

Sub-Structure & Super-Structure Construction Progress

MAY 2022

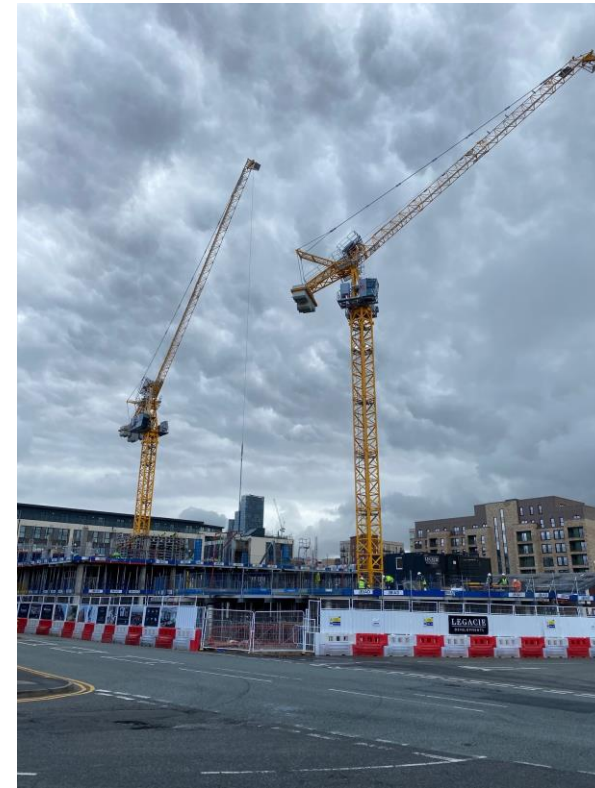
Site investigations	100% complete
Site compound and temporary supplies	100% complete
Demolition and site clearance	100% complete
Ground infill and site levelling	100% complete
Piling Mat Working Platform	100% complete
Piling foundations	100% complete
Retaining walls, concrete beam foundations	100% complete
Steel reinforcement concrete slab	100% complete
Ground floor slab construction	100% complete
Concrete frame structure	42% complete
Upper suspended concrete floor structure	41% complete
Concrete pour upper suspended floor structure	41% complete
Stair and lift core structure	6% complete
Sub-structure Masonry walls	0% complete
Fire coating steel framework	0% complete
Structural framework forming external walls	6% complete
Flat roof structure and covering	0% complete

Sub-Structure & Super-Structure Progress

MAY 2022



Ordsall Lane site view



Ordsall Lane site view

Sub-Structure & Super-Structure Progress

MAY 2022



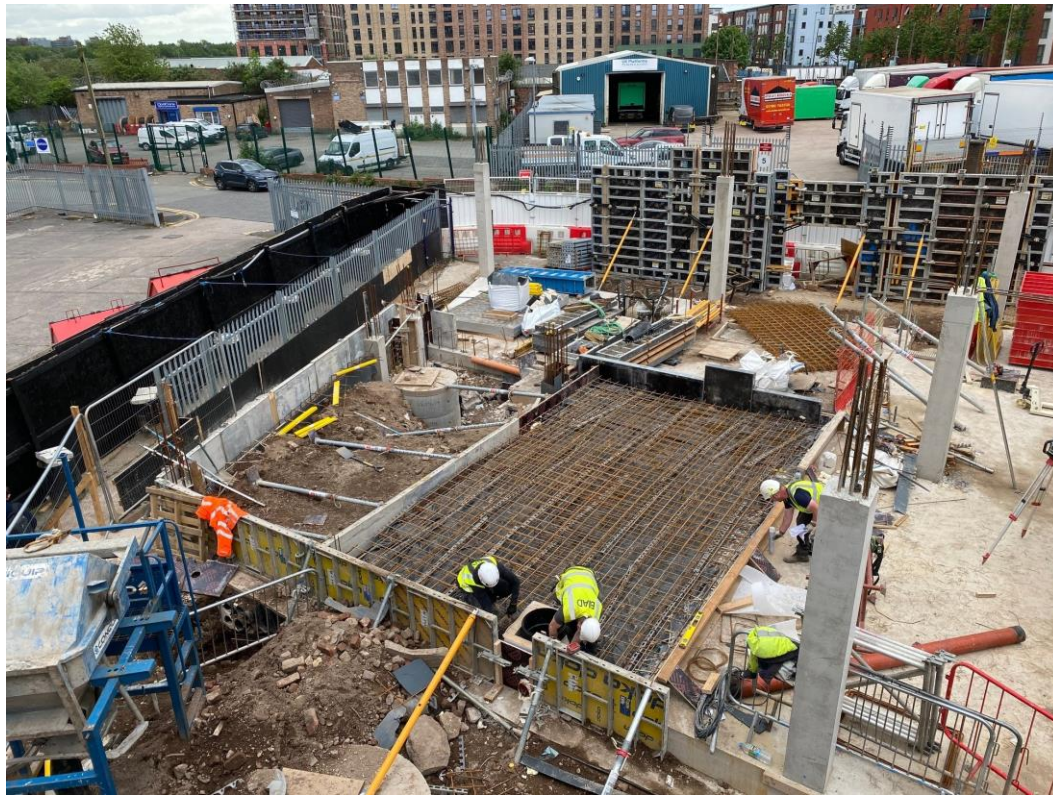
Ordsall Lane site view



Ordsall Lane site view

Sub-Structure & Super-Structure Progress

MAY 2022



Block A floor slab, capping beams and columns



Block A floor slab, capping beams and columns

Sub-Structure & Super-Structure Progress

MAY 2022



Block A upper floor slab and columns



Block A upper floor slab and columns

Sub-Structure & Super-Structure Progress

MAY 2022



Block A upper floor slab and columns



Block A upper floor slab and columns

Sub-Structure & Super-Structure Progress

MAY 2022



Block A upper floor slab and columns



Block A upper floor slab and columns

Sub-Structure & Super-Structure Progress

MAY 2022



Block A upper floor slab and columns



Block A upper floor slab and columns

Sub-Structure & Super-Structure Progress

MAY 2022



Block A upper floor slab and columns



Block A upper floor slab and columns

Sub-Structure & Super-Structure Progress

MAY 2022



Block A upper floor slab and columns



Block A upper floor slab and columns

Sub-Structure & Super-Structure Progress

MAY 2022



Block A upper floor slab and columns



Block A upper floor slab and columns

Sub-Structure & Super-Structure Progress

MAY 2022



Block C ground supported slab



Block C upper floor slab and columns

Sub-Structure & Super-Structure Progress

MAY 2022



Block B upper floor slab and columns



Block B upper floor slab and columns

Sub-Structure & Super-Structure Progress

MAY 2022



Block B upper floor slab and columns



Block B drainage

Sub-Structure & Super-Structure Progress

MAY 2022



Block B scaffolding



Block B scaffolding

Sub-Structure & Super-Structure Progress

MAY 2022



Block B upper floor slab and columns



Block B upper floor slab and columns

Sub-Structure & Super-Structure Progress

MAY 2022



Block B upper floor slab and columns



Block B upper floor slab and columns

Sub-Structure & Super-Structure Progress

MAY 2022



Block B upper floor slab and columns



Block B upper floor slab and columns

Sub-Structure & Super-Structure Progress

MAY 2022



Block B upper floor slab and columns



Block B sub-structure

Sub-Structure & Super-Structure Progress

MAY 2022



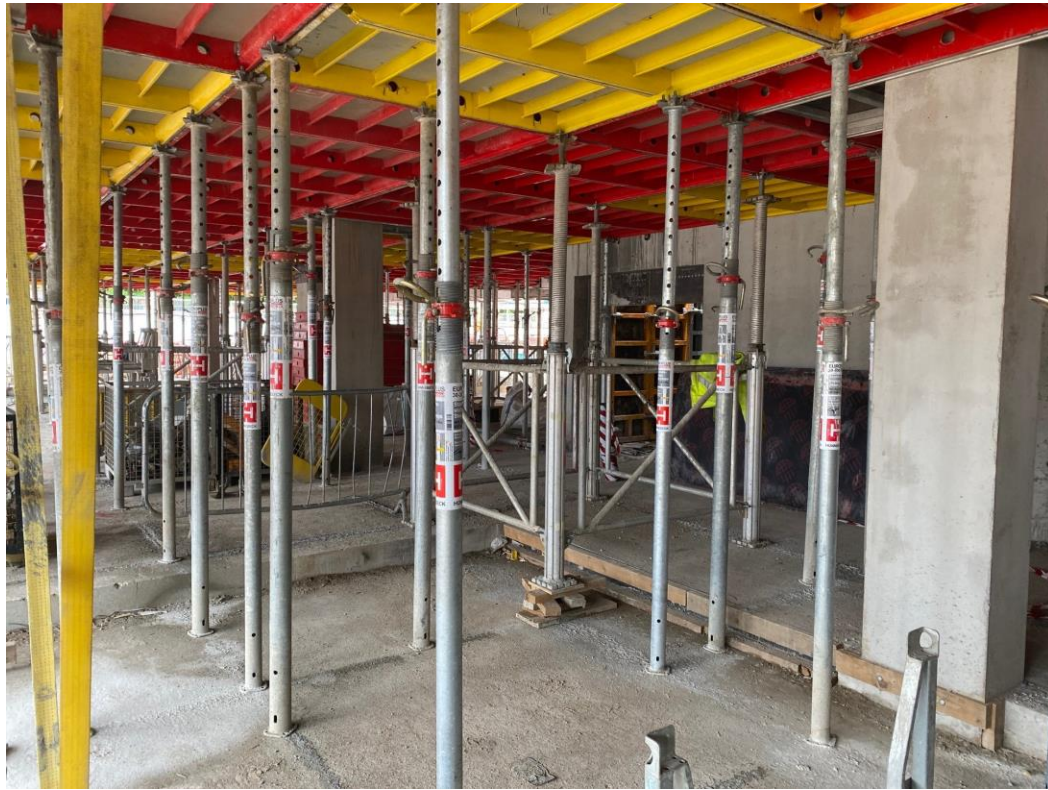
Block B upper floor slab and columns



Block B sub-structure

Sub-Structure & Super-Structure Progress

MAY 2022



Block B Shuttering



Block B Shuttering

Sub-Structure & Super-Structure Progress

MAY 2022



Block B Shuttering



Block B superstructure

Sub-Structure & Super-Structure Progress

MAY 2022



Block B concrete PT slab & column structure



Block B concrete PT slab & column structure

Sub-Structure & Super-Structure Progress

MAY 2022



Block B concrete PT slab & column structure



Block B concrete PT slab & column structure

Sub-Structure & Super-Structure Progress

MAY 2022



Block B concrete PT slab & column structure



Block B sfs external wall structure

Sub-Structure & Super-Structure Progress

MAY 2022



Block B sfs external wall structure



Block B sfs material storage

TO FIND OUT MORE ABOUT

Merchant's Wharf, Salford

PLEASE CONTACT

legacie

WWW.LEGACIE.CO.UK

By Appointment Only
Unit 4 Connect Business Village
Liverpool, L5 9PR
+44 (0) 151 207 9990