

legacie



Merchant's Wharf Investors Report

IRO9 MARCH 2022

Merchant's Wharf 196 Luxury Apartments



Schedule of Accommodation

Basement

- Car parking 46 no. spaces
- Lift access
- Plant

Ground Floor

- Commercial /retail units
- Gymnasium
- 5no. single storey & 4no. duplex Apartments
- Comms Room
- Refuse store
- Cycle store
- Plant
- Sub-station
- Hard and soft landscaping

Floors 1 - 9

- 87 no. 1 Bedroom Apartments
- 91 no. 2 Bedroom Apartments
- 18 no. 3 Bedroom Apartments
- Roof terraces

New Build Two Block Development to Create Residential Apartments Commercial Units & Underground Parking



Land at corner of Ordsall Lane, Dyer Street & Worrall Street, Salford, Manchester M5

The eleven storey new build development generally comprises:

- Demolition of adjoining structures and perimeter walls
- Site clearance and levelling
- Site investigations and trial holes
- Excavation and formation of new foundations
- Below and above ground drainage
- New ground supported and part suspended concrete floor slab
- Nine and Seven storey steel frame structure
- External clad and glazed envelope
- Suspended metal deck and concrete floors
- Flat roof structures and finishes
- Aluminium curtain walling, external windows and doors and shopfronts
- External balconies and balustrades
- Internal sub-division of commercial units and apartments with non-loadbearing block and stud partitions
- Installation of plumbing services and mechanical services
- Installation of electrical services
- Installation of new lift car access
- Installation of kitchen and sanitary fittings
- New internal finishes, joinery fittings and decorations

Site Location



Aerial view of Merchant's Wharf site location



Aerial view of Merchant's Wharf site location

Building Structure

Merchants Wharf, Salford
New Build Development

Sub-Structure & Super-Structure Construction Progress

MARCH 2022

Site investigations	100% complete
Site compound and temporary supplies	100% complete
Demolition and site clearance	100% complete
Ground infill and site levelling	100% complete
Piling Mat Working Platform	100% complete
Piling foundations	100% complete
Retaining walls, concrete beam foundations	70% complete
Steel reinforcement concrete slab	50% complete
Ground floor slab construction	50% complete
Concrete frame structure	12% complete
Upper suspended concrete floor structure	6% complete
Concrete pour upper suspended floor structure	6% complete
Internal staircase structure	6% complete
Sub-structure Masonry walls	0% complete
Fire coating steel framework	0% complete
Structural framework forming external walls	0% complete
Flat roof structure and covering	0% complete

Sub-Structure & Super-Structure Progress

MARCH 2022



Ordsall Lane site view



Ordsall Lane site view

Sub-Structure & Super-Structure Progress

MARCH 2022



Ordsall Lane site view



Ordsall Lane site view

Sub-Structure & Super-Structure Progress

MARCH 2022



Ordsall Lane site view



Ordsall Lane site view

Sub-Structure & Super-Structure Progress

MARCH 2022



Ordsall Lane site view



Ordsall Lane site view

Sub-Structure & Super-Structure Progress

MARCH 2022



Ordsall Lane site view



Ordsall Lane site view

Sub-Structure & Super-Structure Progress

MARCH 2022



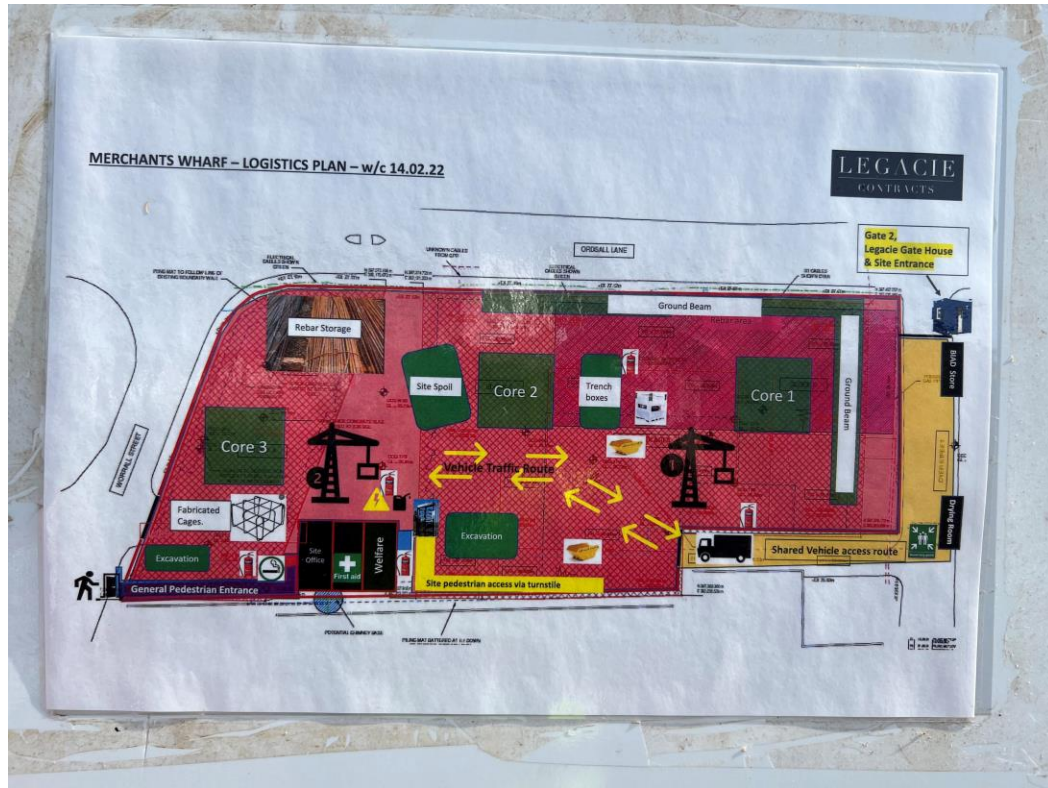
Ordsall Lane site view



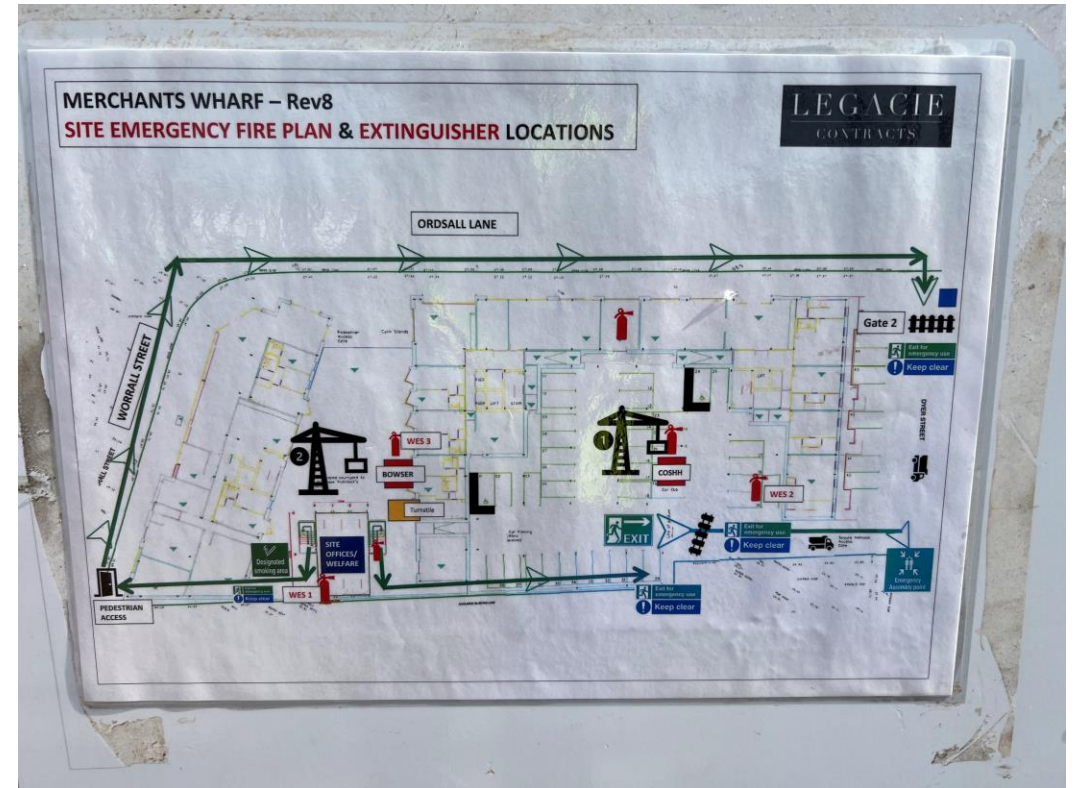
Ordsall Lane site view

Sub-Structure & Super-Structure Progress

MARCH 2022



H&S site logistics plan



H&S site emergency plan

Sub-Structure & Super-Structure Progress

MARCH 2022



H&S site personnel



Brick sample panels

Sub-Structure & Super-Structure Progress

MARCH 2022



Brick sample panels



Brick sample panels

Sub-Structure & Super-Structure Progress

MARCH 2022



Brick sample panels



Brick sample panels

Sub-Structure & Super-Structure Progress

MARCH 2022



Block B concrete frame structure



Block B concrete frame structure

Sub-Structure & Super-Structure Progress

MARCH 2022



Block B concrete slab structure



Block B concrete slab structure

Sub-Structure & Super-Structure Progress

MARCH 2022



Block B concrete columns structure



Block B concrete columns structure

Sub-Structure & Super-Structure Progress

MARCH 2022



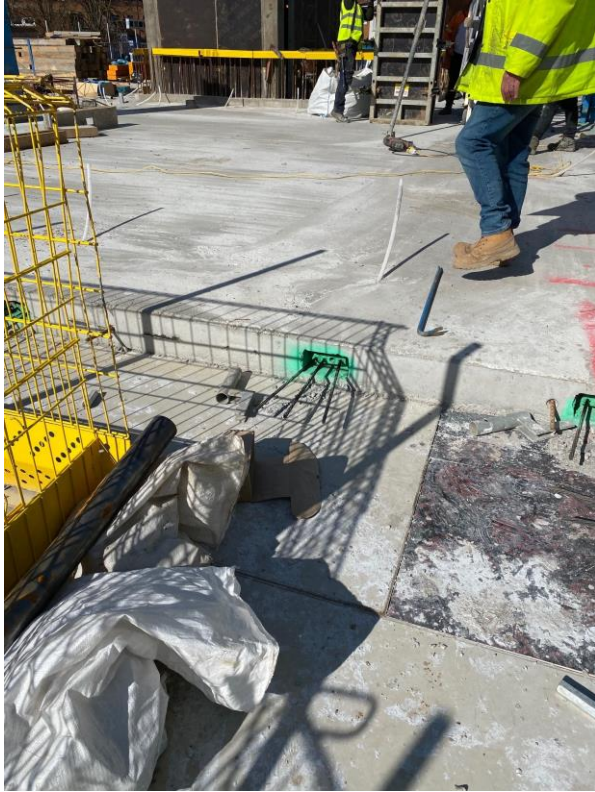
Block B first floor concrete slab & column structure



Block B first floor concrete slab & column structure

Sub-Structure & Super-Structure Progress

MARCH 2022



Block B first floor PT concrete slab structure



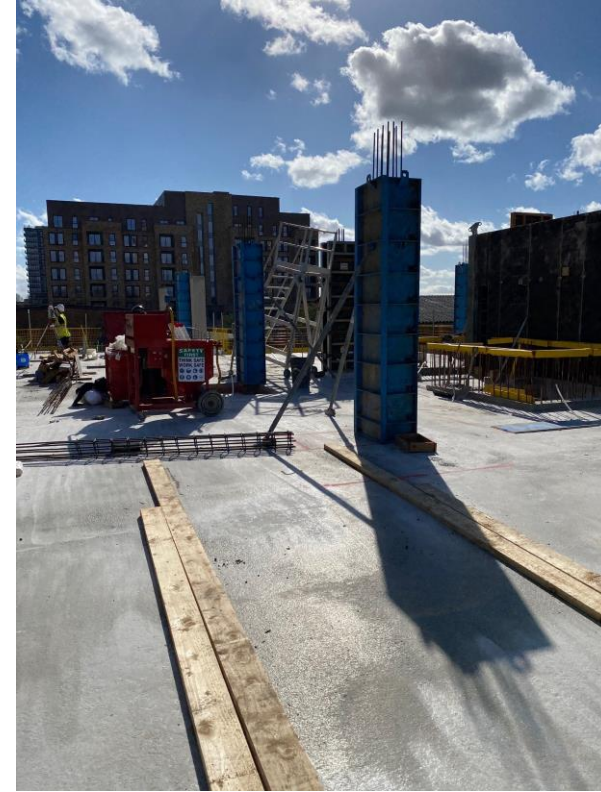
Block B first floor PT concrete slab structure

Sub-Structure & Super-Structure Progress

MARCH 2022



Block B first floor concrete slab & column structure



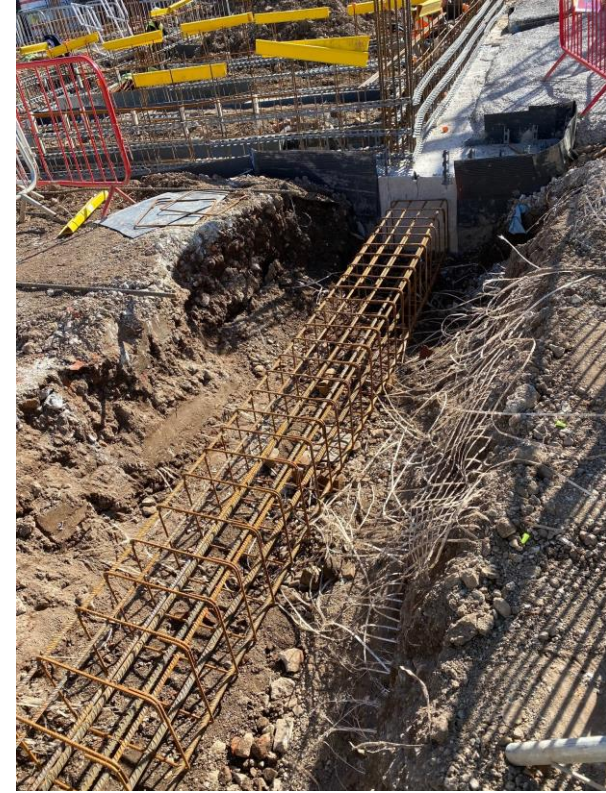
Block B first floor concrete slab & column structure

Sub-Structure & Super-Structure Progress

MARCH 2022



Reinforcement cages capping beams and columns



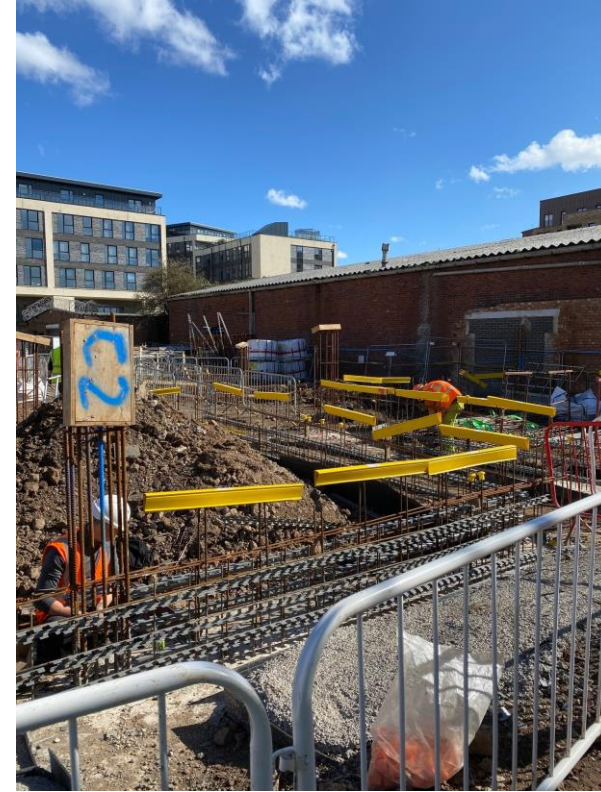
Reinforcement cages capping beams and columns

Sub-Structure & Super-Structure Progress

MARCH 2022



Reinforcement cages capping beams and columns



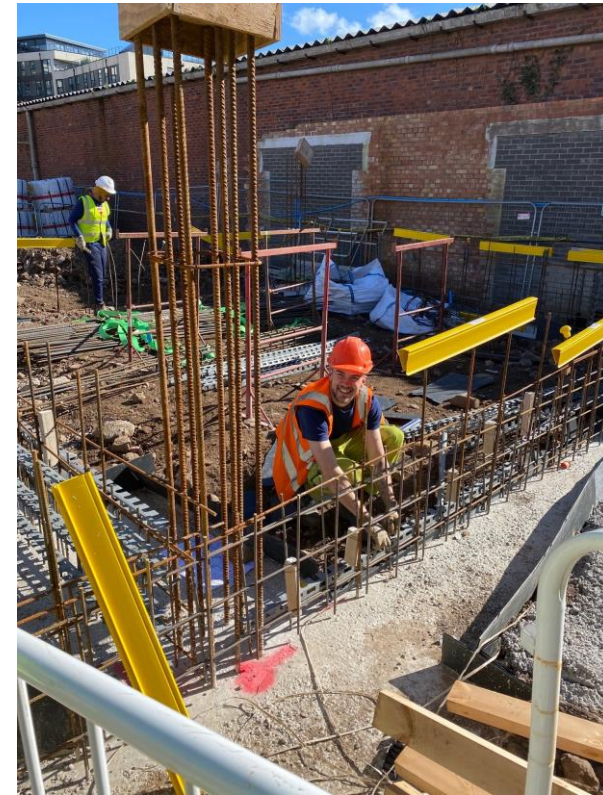
Reinforcement cages capping beams and columns

Sub-Structure & Super-Structure Progress

MARCH 2022



Reinforcement cages capping beams and columns



Reinforcement cages capping beams and columns

Sub-Structure & Super-Structure Progress

MARCH 2022



Block A floor slab, capping beams and columns



Block A floor slab, capping beams and columns

Sub-Structure & Super-Structure Progress

MARCH 2022



Block A floor slab, capping beams and columns



Block A floor slab, capping beams and columns

Sub-Structure & Super-Structure Progress

MARCH 2022



Block A floor slab, capping beams and columns



Block A floor slab, capping beams and columns

Sub-Structure & Super-Structure Progress

MARCH 2022



Block A floor slab, capping beams and columns



Block A floor slab, capping beams and columns

Sub-Structure & Super-Structure Progress

MARCH 2022



Block A floor slab, capping beams and columns



Block A floor slab, capping beams and columns

Sub-Structure & Super-Structure Progress

MARCH 2022



Block A pile cropping



Block A pile cropping

Sub-Structure & Super-Structure Progress

MARCH 2022



Block A pile cropping



Block A pile cropping

Sub-Structure & Super-Structure Progress

MARCH 2022



Site Access



Site Access

Sub-Structure & Super-Structure Progress

MARCH 2022



FALCON TOWER CRANE SERVICES LTD			
MAKE:	JASO	MODEL:	J198HPA
PLANT NO:	TC7663	SERIAL NO:	0103
JIB:	35m	HOOK HT:	32.3m
BASE TYPE:		FIXING ANGLES	26,200Kg
COUNTER BALLAST:			N/A
BASE BALLAST:		SWL	6000Kg
RADIUS		SWL	6000Kg
35m			
35m			
Max. Operating Wind Speed - 38 M.P.H. / 61 K.P.H.			
FALCON TOWER CRANE SERVICES LTD, SHIPDHAM AIRFIELD INDUSTRIAL ESTATE, SHIPDHAM, NORFOLK, IP25 7SD			
CONTACT NUMBER: 01362 821048			

Tower crane operation details



Restricted site access

Sub-Structure & Super-Structure Progress

MARCH 2022



Shuttering materials



Shuttering materials

Sub-Structure & Super-Structure Progress

MARCH 2022



Floor slab reinforcement



Site plant and machinery

Sub-Structure & Super-Structure Progress

MARCH 2022



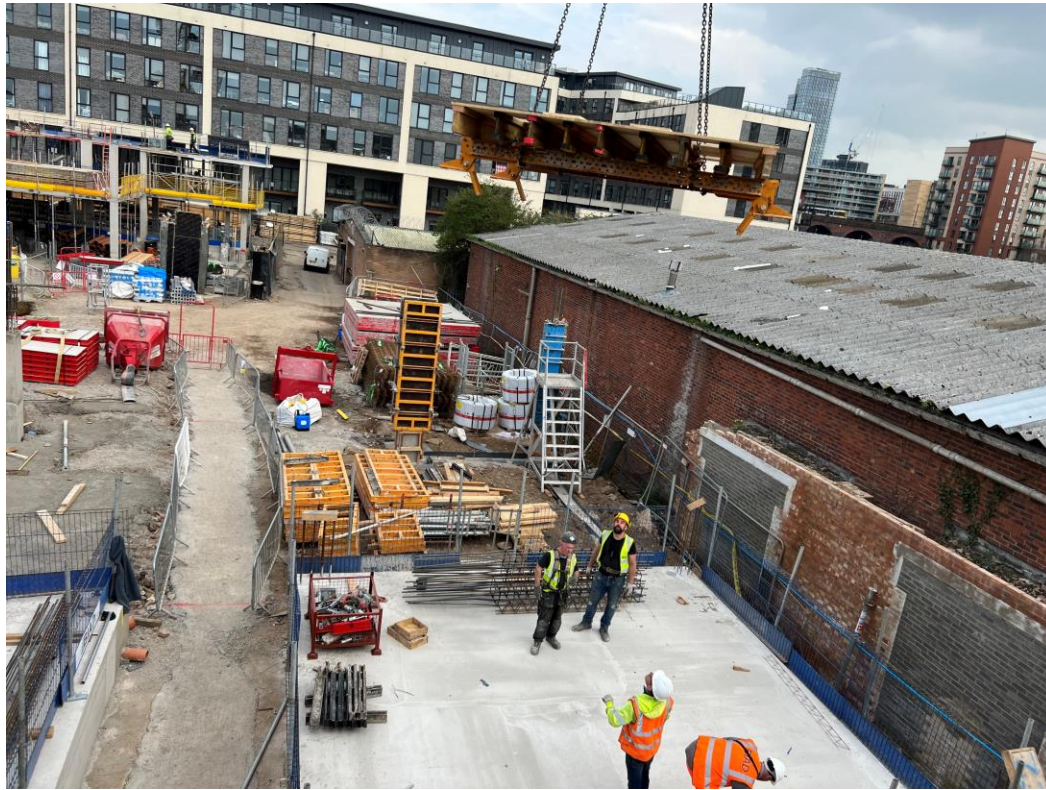
Block B general site activity



Site plant and machinery

Sub-Structure & Super-Structure Progress

MARCH 2022



Block B general site activity



Block B general site activity

Sub-Structure & Super-Structure Progress

MARCH 2022



Block B general site activity



Block B general site activity

Sub-Structure & Super-Structure Progress

MARCH 2022



Block B concrete columns structure



Block B concrete columns structure

Sub-Structure & Super-Structure Progress

MARCH 2022



Block B concrete columns structure



Block B concrete slab structure

Sub-Structure & Super-Structure Progress

MARCH 2022



Block B concrete slab drainage



Block B concrete slab drainage

Sub-Structure & Super-Structure Progress

MARCH 2022



Block B First floor concrete PT slab structure



Block B First floor concrete PT slab structure

Sub-Structure & Super-Structure Progress

MARCH 2022



Block B First floor concrete PT slab structure



Block B First floor concrete PT slab structure

TO FIND OUT MORE ABOUT

Merchant's Wharf, Salford

PLEASE CONTACT

legacie

WWW.LEGACIE.CO.UK

By Appointment Only
Unit 4 Connect Business Village
Liverpool, L5 9PR
+44 (0) 151 207 9990