

legacie



Merchant's Wharf Investors Report

IRO8 FEBRUARY 2022

Merchant's Wharf 196 Luxury Apartments



Schedule of Accommodation

Basement

- Car parking 46 no. spaces
- Lift access
- Plant

Ground Floor

- Commercial /retail units
- Gymnasium
- 5no. single storey & 4no. duplex Apartments
- Comms Room
- Refuse store
- Cycle store
- Plant
- Sub-station
- Hard and soft landscaping

Floors 1 - 9

- 87 no. 1 Bedroom Apartments
- 91 no. 2 Bedroom Apartments
- 18 no. 3 Bedroom Apartments
- Roof terraces

New Build Two Block Development to Create Residential Apartments Commercial Units & Underground Parking



Land at corner of Ordsall Lane, Dyer Street & Worrall Street, Salford, Manchester M5

The eleven storey new build development generally comprises:

- Demolition of adjoining structures and perimeter walls
- Site clearance and levelling
- Site investigations and trial holes
- Excavation and formation of new foundations
- Below and above ground drainage
- New ground supported and part suspended concrete floor slab
- Nine and Seven storey steel frame structure
- External clad and glazed envelope
- Suspended metal deck and concrete floors
- Flat roof structures and finishes
- Aluminium curtain walling, external windows and doors and shopfronts
- External balconies and balustrades
- Internal sub-division of commercial units and apartments with non-loadbearing block and stud partitions
- Installation of plumbing services and mechanical services
- Installation of electrical services
- Installation of new lift car access
- Installation of kitchen and sanitary fittings
- New internal finishes, joinery fittings and decorations

Site Location



Aerial view of Merchant's Wharf site location



Aerial view of Merchant's Wharf site location

Building Structure

Merchants Wharf, Salford
New Build Development

Sub-Structure & Super-Structure Construction Progress

FEBRUARY 2022

Site investigations	100% complete
Site compound and temporary supplies	100% complete
Demolition and site clearance	100% complete
Ground infill and site levelling	100% complete
Piling Mat Working Platform	100% complete
Piling foundations	100% complete
Retaining walls, concrete beam foundations	70% complete
Steel reinforcement concrete slab	35% complete
Floor slab construction	35% complete
Concrete frame structure	8% complete
Upper suspended concrete floor structure	0% complete
Concrete pour upper suspended floor structure	0% complete
Internal staircase structure	0% complete
Sub-structure Masonry walls	0% complete
Fire coating steel framework	0% complete
Structural framework forming external walls	0% complete
Flat roof structure and covering	0% complete

Sub-Structure & Super-Structure Progress

FEBRUARY 2022



Ordsall Lane site view



Ordsall Lane site view

Sub-Structure & Super-Structure Progress

FEBRUARY 2022



Ordsall Lane site view



Ordsall Lane site view

Sub-Structure & Super-Structure Progress

FEBRUARY 2022



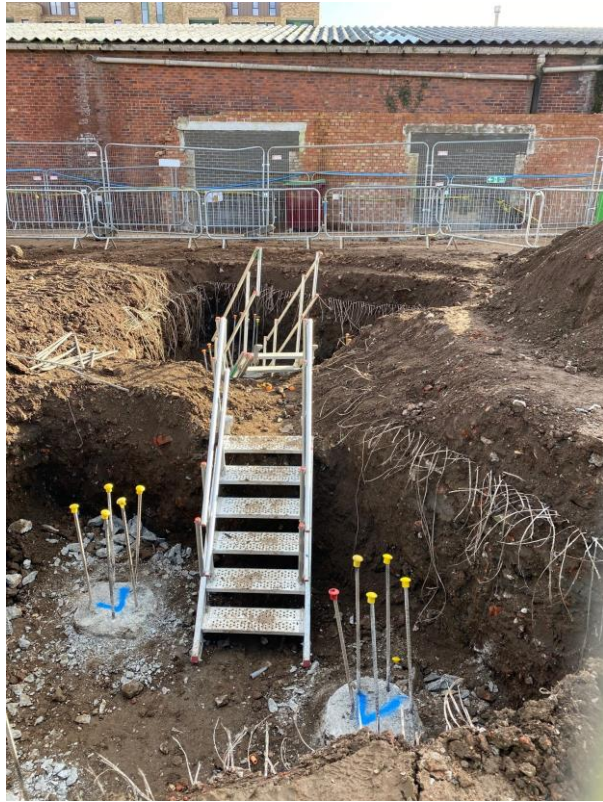
Cranes in use



Cranes in use

Sub-Structure & Super-Structure Progress

FEBRUARY 2022



Trench access



Reinforcement cages stored pad foundations

Sub-Structure & Super-Structure Progress

FEBRUARY 2022



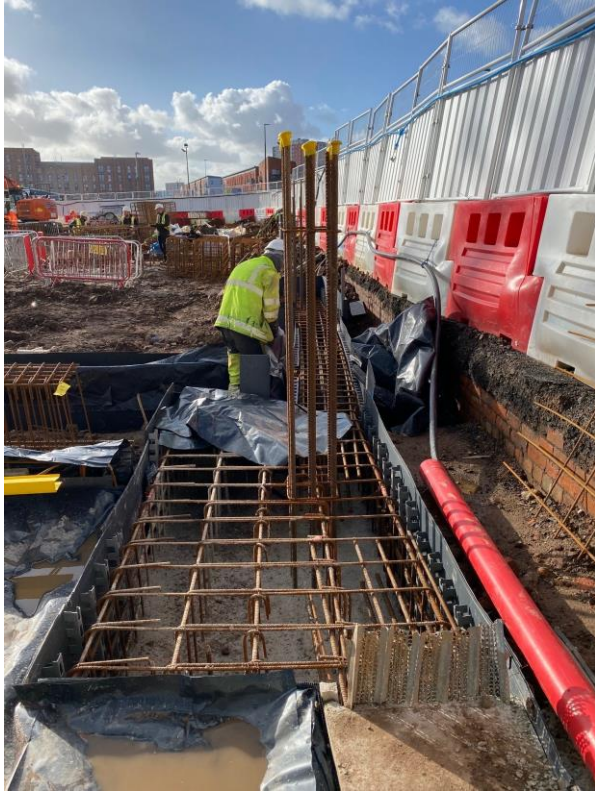
Reinforcement cages stored pad foundations



Capping beam concrete poured

Sub-Structure & Super-Structure Progress

FEBRUARY 2022



Reinforcement cages capping beams and columns



Concrete column structure

Sub-Structure & Super-Structure Progress

FEBRUARY 2022



Concrete column structure



Concrete column structure

Sub-Structure & Super-Structure Progress

FEBRUARY 2022



Concrete column structure



Concrete column structure

Sub-Structure & Super-Structure Progress

FEBRUARY 2022



Block B stair core under construction



Block B stair core under construction

Sub-Structure & Super-Structure Progress

FEBRUARY 2022



Block B stair core under construction



Block B stair core under construction

Sub-Structure & Super-Structure Progress

FEBRUARY 2022



Sub-station capping beam concrete foundations poured



Sub-station capping beam concrete foundations

Sub-Structure & Super-Structure Progress

FEBRUARY 2022



Block B capping beam under construction



Block B capping beam under construction

Sub-Structure & Super-Structure Progress

FEBRUARY 2022



Block B capping beam under construction



Block B capping beam under construction

Sub-Structure & Super-Structure Progress

FEBRUARY 2022



Block B pile cropping



Block B pile cropping

Sub-Structure & Super-Structure Progress

FEBRUARY 2022



Block B pile cropping



Block B pad foundation construction

Sub-Structure & Super-Structure Progress

FEBRUARY 2022



Block A pad foundation under construction



Block A pad foundation under construction

Sub-Structure & Super-Structure Progress

FEBRUARY 2022



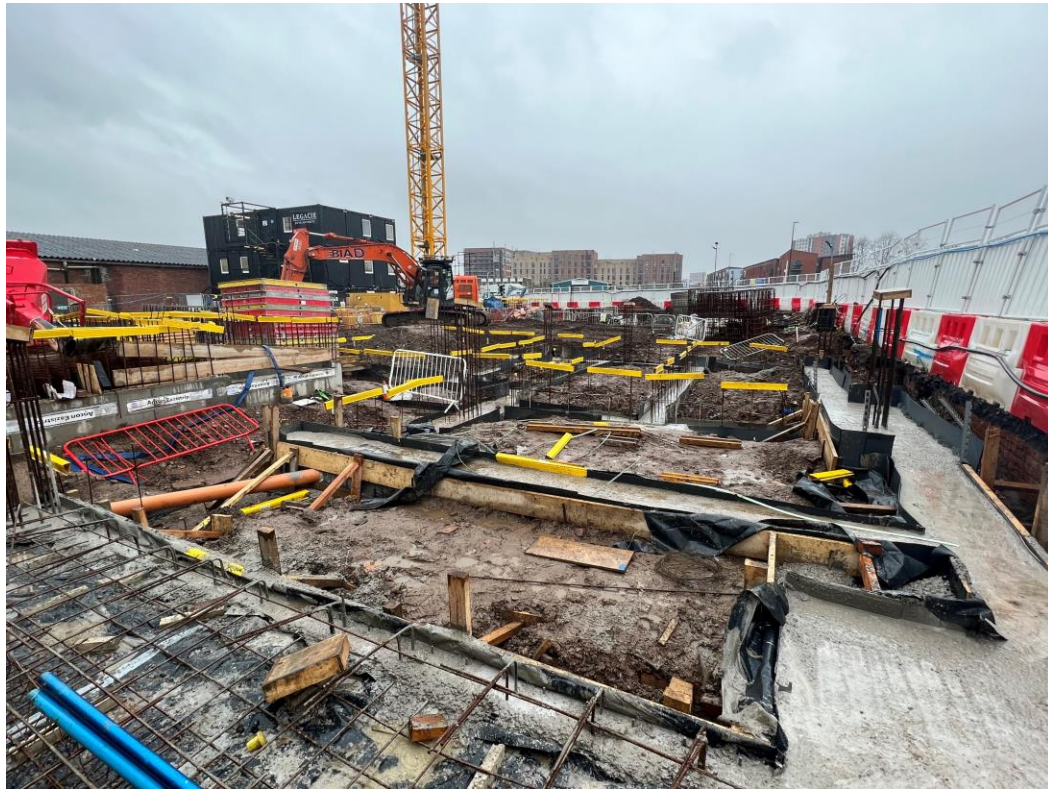
Block A general site activity



Block A general site activity

Sub-Structure & Super-Structure Progress

FEBRUARY 2022



Block B capping beams installed



Block B capping beams installed

Sub-Structure & Super-Structure Progress

FEBRUARY 2022



Block B floor slab installed & column construction



Block B floor slab installed & column construction

Sub-Structure & Super-Structure Progress

FEBRUARY 2022



Block B floor slab installed & column construction



Block B floor slab installed & column construction

Sub-Structure & Super-Structure Progress

FEBRUARY 2022



Block B concrete framework and upper floor slab construction



Block B concrete framework and upper floor slab construction

Sub-Structure & Super-Structure Progress

FEBRUARY 2022



Block B concrete framework and upper floor slab construction



Block B concrete framework and upper floor slab construction

Sub-Structure & Super-Structure Progress

FEBRUARY 2022



Block B stair core construction



Block B stair core construction

Sub-Structure & Super-Structure Progress

FEBRUARY 2022



Block B concrete framework shuttering



Block B concrete framework shuttering

Sub-Structure & Super-Structure Progress

FEBRUARY 2022



Block B concrete framework shuttering



Block B concrete framework shuttering

Sub-Structure & Super-Structure Progress

FEBRUARY 2022



Block B concrete framework shuttering



Block B concrete framework shuttering

Sub-Structure & Super-Structure Progress

FEBRUARY 2022



Block B concrete framework shuttering



Block B concrete framework shuttering

Sub-Structure & Super-Structure Progress

FEBRUARY 2022



Block B concrete framework shuttering



Block B concrete framework shuttering

Sub-Structure & Super-Structure Progress

FEBRUARY 2022



Block B concrete framework shuttering



Block B fire collars

TO FIND OUT MORE ABOUT

Merchant's Wharf, Salford

PLEASE CONTACT

legacie

WWW.LEGACIE.CO.UK

By Appointment Only
Unit 4 Connect Business Village
Liverpool, L5 9PR
+44 (0) 151 207 9990