

legacie



Merchant's Wharf Investors Report

IRO7 JANUARY 2022

Merchant's Wharf 196 Luxury Apartments



Schedule of Accommodation

Basement

- Car parking 46 no. spaces
- Lift access
- Plant

Ground Floor

- Commercial /retail units
- Gymnasium
- 5no. single storey & 4no. duplex Apartments
- Comms Room
- Refuse store
- Cycle store
- Plant
- Sub-station
- Hard and soft landscaping

Floors 1 - 9

- 87 no. 1 Bedroom Apartments
- 91 no. 2 Bedroom Apartments
- 18 no. 3 Bedroom Apartments
- Roof terraces

New Build Two Block Development to Create Residential Apartments Commercial Units & Underground Parking



Land at corner of Ordsall Lane, Dyer Street & Worrall Street, Salford, Manchester M5

The eleven storey new build development generally comprises:

- Demolition of adjoining structures and perimeter walls
- Site clearance and levelling
- Site investigations and trial holes
- Excavation and formation of new foundations
- Below and above ground drainage
- New ground supported and part suspended concrete floor slab
- Nine and Seven storey steel frame structure
- External clad and glazed envelope
- Suspended metal deck and concrete floors
- Flat roof structures and finishes
- Aluminium curtain walling, external windows and doors and shopfronts
- External balconies and balustrades
- Internal sub-division of commercial units and apartments with non-loadbearing block and stud partitions
- Installation of plumbing services and mechanical services
- Installation of electrical services
- Installation of new lift car access
- Installation of kitchen and sanitary fittings
- New internal finishes, joinery fittings and decorations

Site Location



Aerial view of Merchant's Wharf site location



Aerial view of Merchant's Wharf site location

Building Structure

Merchants Wharf, Salford
New Build Development

Sub-Structure & Super-Structure Construction Progress

JANUARY 2022

Site investigations	100% complete
Site compound and temporary supplies	100% complete
Demolition and site clearance	100% complete
Ground infill and site levelling	100% complete
Piling Mat Working Platform	100% complete
Piling foundations	100% complete
Retaining walls, concrete beam foundations	65% complete
Steel reinforcement concrete slab	35% complete
Floor slab construction	35% complete
Steel frame structure	0% complete
Upper suspended steel floor structure	0% complete
Concrete pour upper suspended floor structure	0% complete
Internal staircase structure	0% complete
Sub-structure Masonry walls	0% complete
Fire coating steel framework	0% complete
Structural framework forming external walls	0% complete
Flat roof structure and covering	0% complete

Sub-Structure & Super-Structure Progress

JANUARY 2022



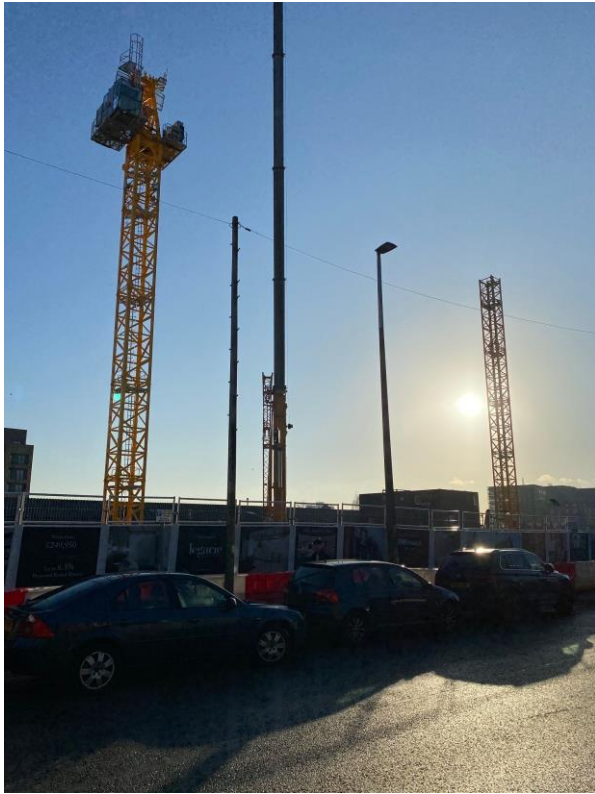
Ordsall Lane site view



Ordsall Lane site view

Sub-Structure & Super-Structure Progress

JANUARY 2022



Ordsall Lane site view



Crane under construction

Sub-Structure & Super-Structure Progress

JANUARY 2022



Crane under construction



Crane under construction

Sub-Structure & Super-Structure Progress

JANUARY 2022



Ordsall Lane site view



Ordsall Lane site view

Sub-Structure & Super-Structure Progress

JANUARY 2022



Ordsall Lane site view



Ordsall Lane site view

Sub-Structure & Super-Structure Progress

JANUARY 2022



Ordsall Lane site view



Worrall Street site view

Sub-Structure & Super-Structure Progress

JANUARY 2022



Below ground drainage



Below ground drainage

Sub-Structure & Super-Structure Progress

JANUARY 2022



Below ground drainage



Below ground drainage

Sub-Structure & Super-Structure Progress

JANUARY 2022



Site access



Site safety information

Sub-Structure & Super-Structure Progress

JANUARY 2022



Crane constructed



Crane generator

Sub-Structure & Super-Structure Progress

JANUARY 2022



Block A - Capping beam installed



Block A - Capping under construction

Sub-Structure & Super-Structure Progress

JANUARY 2022



Block A – Pile Capping



Block A - Capping under construction

Sub-Structure & Super-Structure Progress

JANUARY 2022



Block A – Drainage



Block A - Drainage

Sub-Structure & Super-Structure Progress

JANUARY 2022



Block A – Site plant



Block A – Site plant

Sub-Structure & Super-Structure Progress

JANUARY 2022



Block A – Drainage & reinforcement materials



Block A – Site levelling

Sub-Structure & Super-Structure Progress

JANUARY 2022



Block A – Stair core



Reinforcement cages capping beams & columns

Sub-Structure & Super-Structure Progress

JANUARY 2022



Reinforcement cages pad foundations, capping beams & columns



Reinforcement cages pad foundations

Sub-Structure & Super-Structure Progress

JANUARY 2022



Block B - General site activity constructing capping beams and slab



Block B – Services ducting

Sub-Structure & Super-Structure Progress

JANUARY 2022



Block B – Pad foundation concrete poured



Block B – Pad foundation and capping beam concrete poured

Sub-Structure & Super-Structure Progress

JANUARY 2022



Block B – Capping beam concrete poured



Block B – Pad foundation concrete poured

Sub-Structure & Super-Structure Progress

JANUARY 2022



Block B – Pad foundation under construction



Block B – Capping beam under construction

Sub-Structure & Super-Structure Progress

JANUARY 2022



Block B – Floor slab under construction



Block B – Floor slab under construction

Sub-Structure & Super-Structure Progress

JANUARY 2022



Block B – Floor slab under construction



Block B – Floor slab under construction

Sub-Structure & Super-Structure Progress

JANUARY 2022



Block B – Floor slab under construction



Block B – Floor slab under construction

Sub-Structure & Super-Structure Progress

JANUARY 2022



Block B – Floor slab under construction



Block B – Pile capping under construction

Sub-Structure & Super-Structure Progress

JANUARY 2022



Block B – Floor slab under construction



Block B – Pile capping under construction

Sub-Structure & Super-Structure Progress

JANUARY 2022



Block B – Floor slab under construction



Block B – Pile capping under construction

Sub-Structure & Super-Structure Progress

JANUARY 2022



Block B – Column shuttering



Block B – Column shuttering

Sub-Structure & Super-Structure Progress

JANUARY 2022



Block B – Column starter bars



Block B – Column reinforcement cages

TO FIND OUT MORE ABOUT

Merchant's Wharf, Salford

PLEASE CONTACT

legacie

WWW.LEGACIE.CO.UK

By Appointment Only
Unit 4 Connect Business Village
Liverpool, L5 9PR
+44 (0) 151 207 9990