

legacie

An architectural rendering of a modern multi-story brick building at dusk. The building features a mix of red brick and light-colored panels. Many windows are illuminated from within, and some ground-floor windows show interior details. The sky is a deep blue, and there are light trails from traffic in the foreground. The text 'Merchant's Wharf Investors Report' is overlaid in white, and 'IRO6 DECEMBER 2021' is centered below it.

Merchant's Wharf Investors Report

IRO6 DECEMBER 2021

Merchant's Wharf 196 Luxury Apartments



Schedule of Accommodation

Basement

- Car parking 46 no. spaces
- Lift access
- Plant

Ground Floor

- Commercial /retail units
- Gymnasium
- 5no. single storey & 4no. duplex Apartments
- Comms Room
- Refuse store
- Cycle store
- Plant
- Sub-station
- Hard and soft landscaping

Floors 1 - 9

- 87 no. 1 Bedroom Apartments
- 91 no. 2 Bedroom Apartments
- 18 no. 3 Bedroom Apartments
- Roof terraces

New Build Two Block Development to Create Residential Apartments Commercial Units & Underground Parking



Land at corner of Ordsall Lane, Dyer Street & Worrall Street, Salford, Manchester M5

The eleven storey new build development generally comprises:

- Demolition of adjoining structures and perimeter walls
- Site clearance and levelling
- Site investigations and trial holes
- Excavation and formation of new foundations
- Below and above ground drainage
- New ground supported and part suspended concrete floor slab
- Nine and Seven storey steel frame structure
- External clad and glazed envelope
- Suspended metal deck and concrete floors
- Flat roof structures and finishes
- Aluminium curtain walling, external windows and doors and shopfronts
- External balconies and balustrades
- Internal sub-division of commercial units and apartments with non-loadbearing block and stud partitions
- Installation of plumbing services and mechanical services
- Installation of electrical services
- Installation of new lift car access
- Installation of kitchen and sanitary fittings
- New internal finishes, joinery fittings and decorations

Site Location



Aerial view of Merchant's Wharf site location



Aerial view of Merchant's Wharf site location

Building Structure

Merchants Wharf, Salford
New Build Development

Sub-Structure & Super-Structure Construction Progress

DECEMBER 2021

Site investigations	100% complete
Site compound and temporary supplies	100% complete
Demolition and site clearance	100% complete
Ground infill and site levelling	100% complete
Piling Mat Working Platform	100% complete
Piling foundations	100% complete
Retaining walls, concrete beam foundations	20% complete
Steel reinforcement concrete slab	0% complete
Floor slab construction	0% complete
Steel frame structure	0% complete
Upper suspended steel floor structure	0% complete
Concrete pour upper suspended floor structure	0% complete
Internal staircase structure	0% complete
Sub-structure Masonry walls	0% complete
Fire coating steel framework	0% complete
Structural framework forming external walls	0% complete
Flat roof structure and covering	0% complete

Sub-Structure & Super-Structure Progress

MAY 2021



Ordsall Lane site view – buildings to be demolished



Ordsall Lane site view – buildings to be demolished

Sub-Structure & Super-Structure Progress

MAY 2021



Worrall Street site view – buildings to be demolished



Worrall Street site view – buildings to be demolished

Sub-Structure & Super-Structure Progress

MAY 2021



Ordsall Lane site view – buildings to be demolished



Ordsall Lane site view – buildings to be demolished

Sub-Structure & Super-Structure Progress

OCTOBER 2021



Worrall Lane site plant & deliveries entrance



Worrall Lane site plant & deliveries entrance

Sub-Structure & Super-Structure Progress

NOVEMBER 2021



Ordsall Lane site view – buildings removed



Ordsall Lane site view – buildings removed

Sub-Structure & Super-Structure Progress

NOVEMBER 2021



Dyer Street site plant & deliveries entrance



Worral Lane site plant & deliveries entrance

Sub-Structure & Super-Structure Progress

NOVEMBER 2021



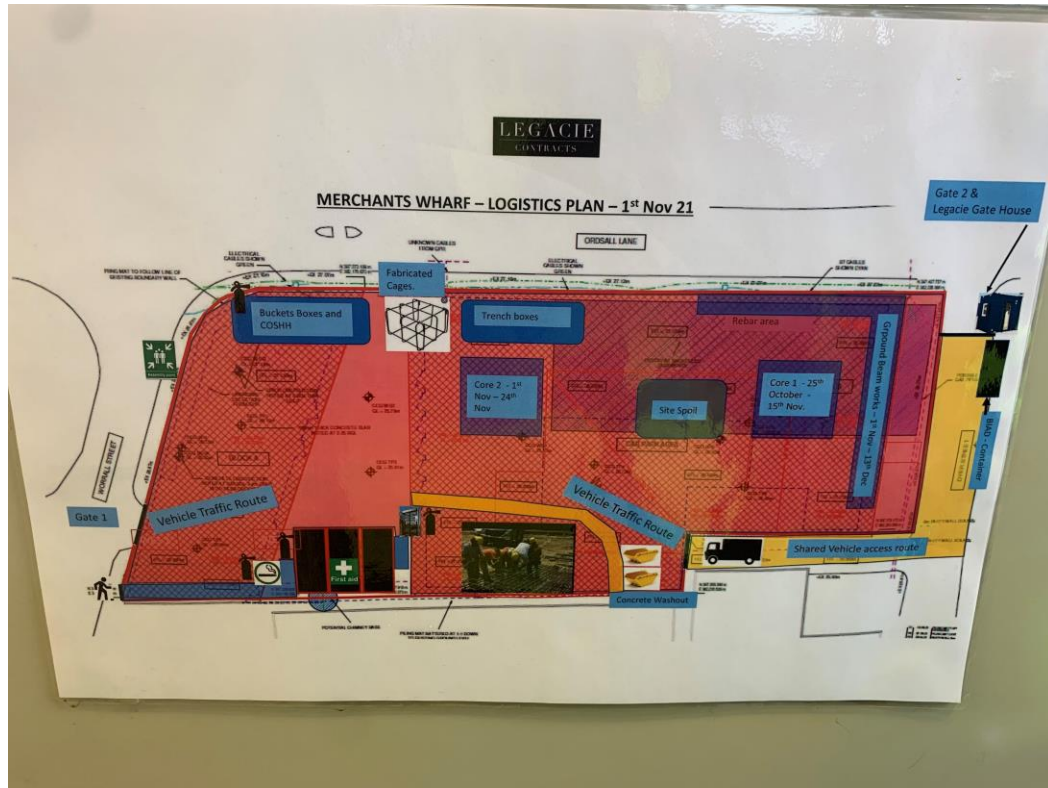
Worrall Lane site plant & deliveries entrance



Worrall Lane site plant & deliveries entrance

Sub-Structure & Super-Structure Progress

NOVEMBER 2021



Site Logistics plan



Site deliveries

Sub-Structure & Super-Structure Progress

NOVEMBER 2021



Site access barriers



Site access barriers

Sub-Structure & Super-Structure Progress

NOVEMBER 2021



Site activity forming core foundation



Site activity forming core foundation

Sub-Structure & Super-Structure Progress

NOVEMBER 2021



Foundation reinforcement stored



Reinforcement cages formed pads and ground beams

Sub-Structure & Super-Structure Progress

NOVEMBER 2021



Foundation reinforcement stored



Site activity plant and machinery

Sub-Structure & Super-Structure Progress

NOVEMBER 2021



Foundation reinforcement cages being formed and stored



Foundation reinforcement cages being formed and stored

Sub-Structure & Super-Structure Progress

NOVEMBER 2021



Foundation reinforcement cages being formed and stored



Foundation reinforcement cages being formed and stored

Sub-Structure & Super-Structure Progress

NOVEMBER 2021



Foundation reinforcement stored



Foundation reinforcement stored

Sub-Structure & Super-Structure Progress

NOVEMBER 2021



Site activity plant and machinery



Site activity plant and machinery

Sub-Structure & Super-Structure Progress

DECEMBER 2021



Block B – Pathway



Block B – Turnstile site entrance

Sub-Structure & Super-Structure Progress

DECEMBER 2021



Block B – Capping beam in place



Block B – Capping beam in place

Sub-Structure & Super-Structure Progress

DECEMBER 2021



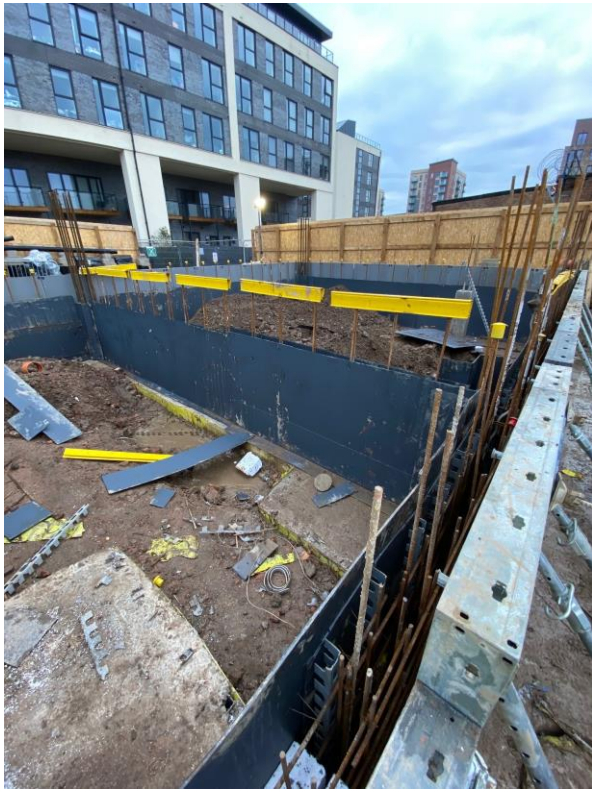
Block B – Capping beam in place



Block B – Capping beam in place

Sub-Structure & Super-Structure Progress

DECEMBER 2021



Block B – Pile caps ready to pour



Pile cap reinforcement ready for concrete pour

Sub-Structure & Super-Structure Progress

DECEMBER 2021



Block B - Pile cap reinforcement ready for concrete pour



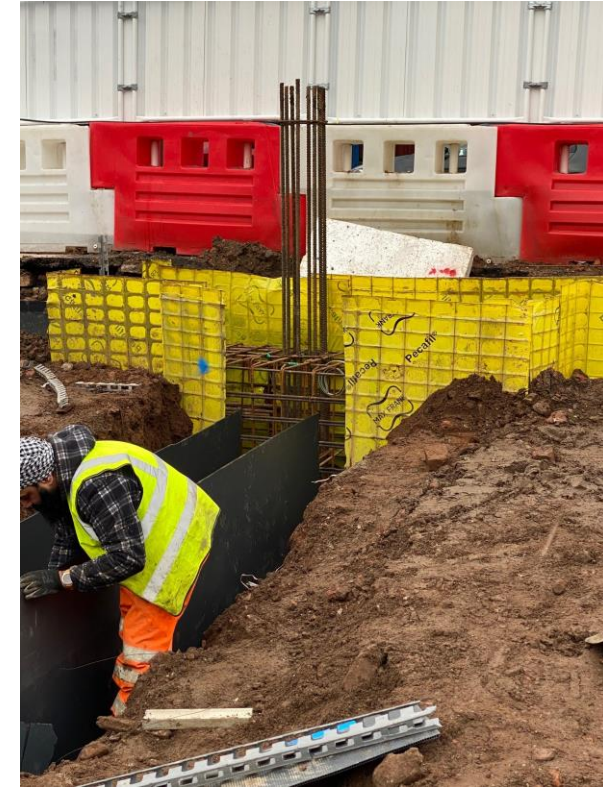
Block B – Pile cap reinforcement ready for concrete pour

Sub-Structure & Super-Structure Progress

DECEMBER 2021



Block B - Pile cap reinforcement ready for concrete pour



Block B - Pile cap reinforcement ready for concrete pour

Sub-Structure & Super-Structure Progress

DECEMBER 2021



Block B – Temporary retaining structure onsite



Block B – Temporary retaining structure onsite

Sub-Structure & Super-Structure Progress

DECEMBER 2021



Core substructure installed



Lift core cast

Sub-Structure & Super-Structure Progress

DECEMBER 2021



Lift core cast



Core substructure installed

Sub-Structure & Super-Structure Progress

DECEMBER 2021



Lift core cast



Core substructure installed

Sub-Structure & Super-Structure Progress

DECEMBER 2021



Steel shuttering onsite



Crane base installed

Sub-Structure & Super-Structure Progress

DECEMBER 2021



Site hoardings in place



Foundation reinforcement on site

Sub-Structure & Super-Structure Progress

DECEMBER 2021



Site activity plant & machinery



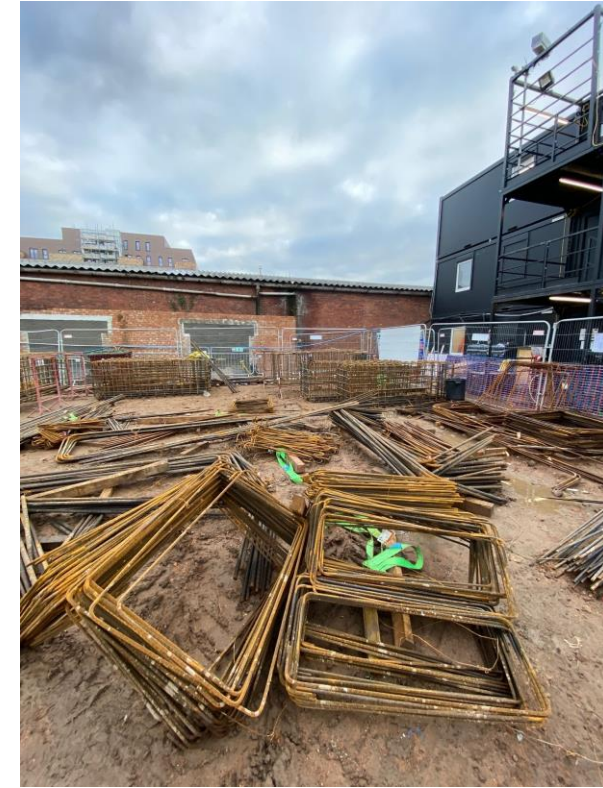
Site activity plant & machinery

Sub-Structure & Super-Structure Progress

DECEMBER 2021



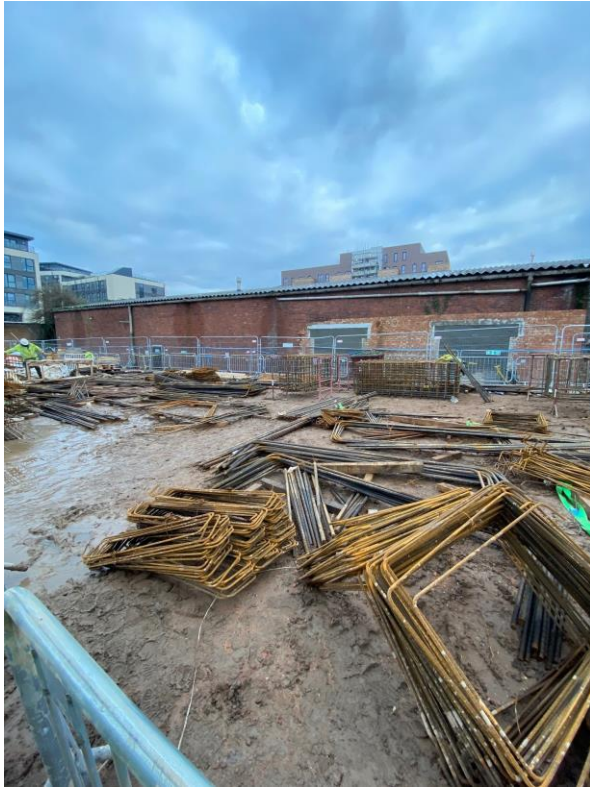
Foundation steel reinforcement stored



Foundation steel reinforcement stored

Sub-Structure & Super-Structure Progress

DECEMBER 2021



Foundation steel reinforcement stored



Hoardings & barriers in place

Sub-Structure & Super-Structure Progress

DECEMBER 2021



Site activity plant & machinery



Site activity plant & machinery

Sub-Structure & Super-Structure Progress

DECEMBER 2021



General site activity

TO FIND OUT MORE ABOUT

Merchant's Wharf, Salford

PLEASE CONTACT

legacie

WWW.LEGACIE.CO.UK

By Appointment Only
Unit 4 Connect Business Village
Liverpool, L5 9PR
+44 (0) 151 207 9990