

legacie



Parliament Square Block 'D' Investors Report

IR31 December 2023

Parliament Square – Phase 1 Block D

177 Luxury Apartments



Land at corner of Upper Parliament Street & Great St George Street, Liverpool L1

Schedule of Accommodation Block 'D'

Basement

- Car parking
- Sub-Station
- Plant

Ground Floor

- Retail units
- Refuse store
- Hard and soft landscaping

Floors 1 - 11

- 74no. 1 Bedroom Apartments
- 103 no. 2 Bedroom Apartments

New Build Two Phase Development to Create Residential Apartments Retail Units & Basement Parking

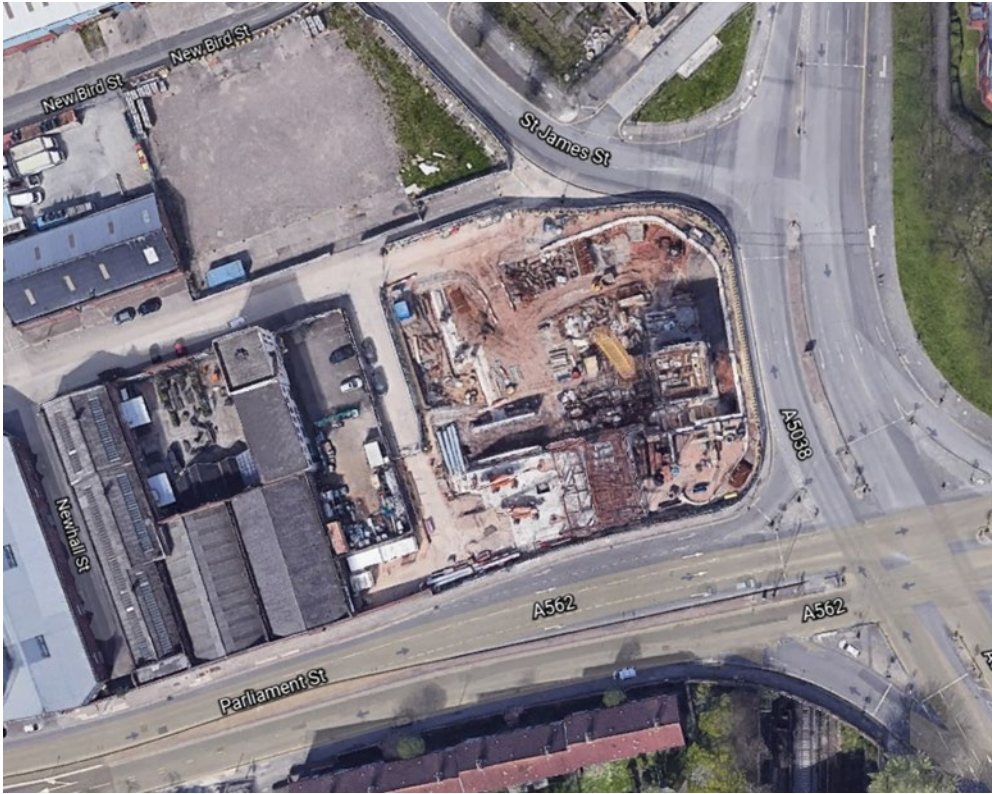


Land at corner of Upper Parliament Street & Great St George Street, Liverpool L1

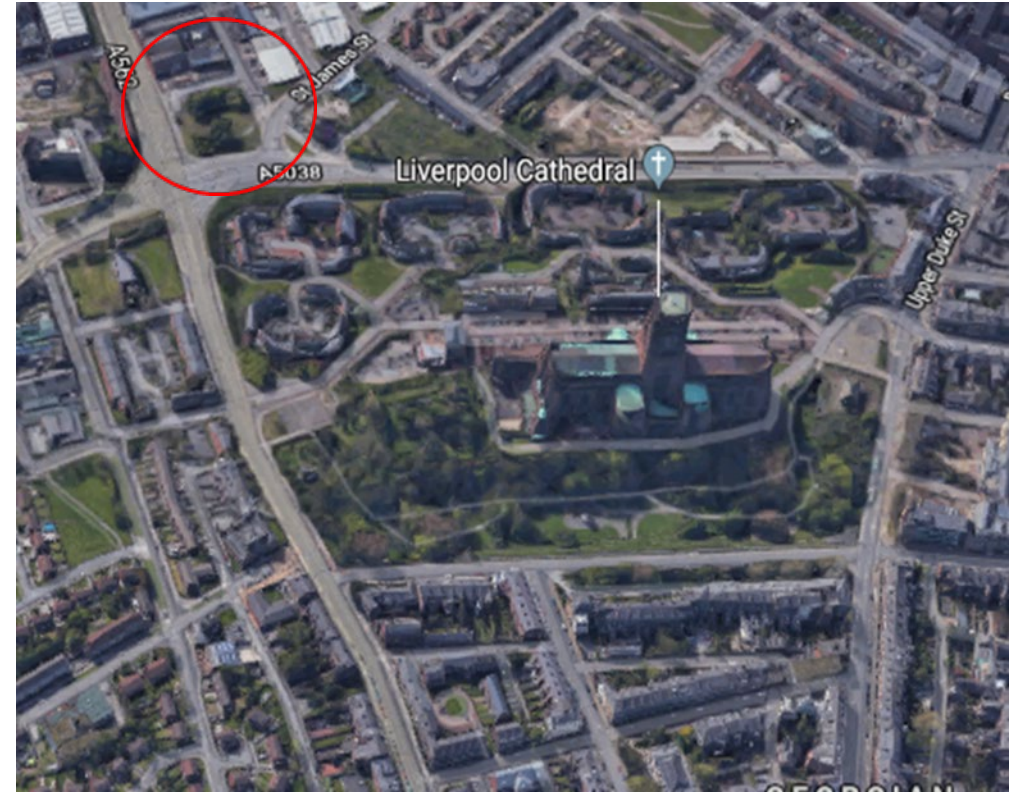
The eleven-storey new build development generally comprises:

- Demolition of adjoining structures and perimeter walls
- Site clearance and levelling
- Site investigations and trial holes
- Excavation and formation of new foundations
- Below and above ground drainage
- New ground supported and part suspended concrete floor slab
- Eighteen storey steel frame structure
- External clad and glazed envelope
- Suspended metal deck and concrete floors
- Flat roof structures and finishes
- Aluminium curtain walling, external windows and doors and shopfronts
- External balconies and balustrades
- Internal sub-division of retail units and apartments with non-loadbearing block and stud partitions
- Installation of plumbing services and mechanical services
- Installation of electrical services
- Installation of new lift car access
- Installation of kitchen and sanitary fittings
- New internal finishes, joinery fittings and decorations

Site Location



Aerial View of the site prior to demolition



Aerial view of the site location of Parliament Square

Building Structure

Parliament Square, Liverpool
New Build Development

Sub-Structure & Super-Structure Progress

December 2023

Basement slab construction	100% complete
Ground floor slab construction	100% complete
Concrete deck floor construction to upper floors	100% complete
Lift and staircase core concrete structure	100% complete
Concrete frame structure	100% complete
Internal staircase structure	100% complete
Structural framework forming external walls	100% complete
Scaffolding & mast climber access	100% complete
Flat roof covering including balconies	83% complete
Weatherboarding	99% complete
External windows / doors	99% complete
Curtain walling	37% complete
Brickwork & insulation	80% complete
External wall cladding and insulation	87% complete

Sub-Structure & Super-Structure Progress

December 2023



Block D Section B – Viewed from Parliament Street



Block D Section A – Viewed from Greenland Street

Sub-Structure & Super-Structure Progress

December 2023



Block D – Viewed from Crump Street



Block D Section B – Façade works complete to Elevation 7

Sub-Structure & Super-Structure Progress

December 2023



Block D Section A – Viewed from Crump Street



Block D Section A – Viewed from Greenland Street

Sub-Structure & Super-Structure Progress

December 2023



Block D Section B – Cladding to balconies ongoing



Block D Section A – Brickwork installation complete

Sub-Structure & Super-Structure Progress

December 2023



Block D Section B – Cradle in place for façade works



Cladding rails installed to balconies

Sub-Structure & Super-Structure Progress

December 2023



Oriel cladding installed



Flemish bond brickwork detail

Sub-Structure & Super-Structure Progress

December 2023



Curtain wall installation commenced



Curtain wall fixing detail

Sub-Structure & Super-Structure Progress

December 2023



Excavation complete for electrical connection works



Substation door installed

Internal Fit-out Block 'D'

Parliament Square, Liverpool
New Build Development

Internal Fit-out Progress

December 2023

Lift installation	95% complete
Partition walls installation	97% complete
Apartment ceiling installation	97% complete
Plaster finishes walls and ceilings	95% complete
1st fix electrical	95% complete
1st fix plumbing and heating	97% complete
Kitchen units and appliances	95% complete
Second fix electrical	88% complete
Second fix plumbing and heating	87% complete
Doorframes	90% complete
Bathroom sanitary fittings	95% complete
Wall and floor tiling	92% complete
Carpet and floor finishes	61% complete
Doors and ironmongery	87.5% complete
Decorations	57% complete

Internal Fit-out Progress

December 2023



[Show Apartment](#)



[Show Apartment](#)

Internal Fit-out Progress

December 2023



[Show Apartment](#)



[Show Apartment](#)

Internal Fit-out Progress

December 2023



[Show Apartment](#)



[Show Apartment](#)

Internal Fit-out Progress

December 2023



Show Apartment



Show Apartment

Internal Fit-out Progress

December 2023



Show Apartment



Show Apartment

Internal Fit-out Progress

December 2023



Show Apartment



Show Apartment

Internal Fit-out Progress

December 2023



Show Apartment



Show Apartment

Internal Fit-out Progress

December 2023



[Show Apartment](#)



[Show Apartment](#)

Internal Fit-out Progress

December 2023



[Show Apartment](#)



[Show Apartment](#)

Internal Fit-out Progress

December 2023



[Show Apartment](#)



[Show Apartment](#)

Internal Fit-out Progress

December 2023



Show Apartment



Show Apartment

Internal Fit-out Progress

December 2023



[Show Apartment](#)



[Show Apartment](#)

Internal Fit-out Progress

December 2023



[Show Apartment](#)



[Show Apartment](#)

Internal Fit-out Progress

December 2023



Show Apartment



Show Apartment

Internal Fit-out Progress

December 2023



Show Apartment



Show Apartment

Internal Fit-out Progress

December 2023



Laminate flooring installation complete



Kitchen installation complete

Internal Fit-out Progress

December 2023



Wallpaper installation complete



Kitchen installation complete

Internal Fit-out Progress

December 2023



Decoration complete



Kitchen installation complete

Internal Fit-out Progress

December 2023



Sanitary installation complete



Sanitary installation complete

Internal Fit-out Progress

December 2023



Bath panel installed



Vanity lid installed

Internal Fit-out Progress

December 2023



Lift installation ongoing



Fire stopping installed

Internal Fit-out Progress

December 2023



Water meters installed



Apartment water mains distribution installed

Internal Fit-out Progress

December 2023



Rooflight installed to staircore



Wet riser installed

Internal Fit-out Progress

December 2023



Communal internal door installed



Communal area fit out ongoing

Internal Fit-out Progress

December 2023



Floor screed installed to amenity area



Gym partitions set-out

TO FIND OUT MORE ABOUT

Parliament Square, Liverpool

PLEASE CONTACT

legacie

WWW.LEGACIE.CO.UK

By Appointment Only
Unit 4 Connect Business Village
Liverpool, L5 9PR
+44 (0) 151 207 9990