

legacie



Parliament Square Block 'D' Investors Report

IR30 November 2023

Parliament Square – Phase 1 Block D

177 Luxury Apartments



Land at corner of Upper Parliament Street & Great St George Street, Liverpool L1

Schedule of Accommodation Block 'D'

Basement

- Car parking
- Sub-Station
- Plant

Ground Floor

- Retail units
- Refuse store
- Hard and soft landscaping

Floors 1 - 11

- 74no. 1 Bedroom Apartments
- 103 no. 2 Bedroom Apartments

New Build Two Phase Development to Create Residential Apartments Retail Units & Basement Parking

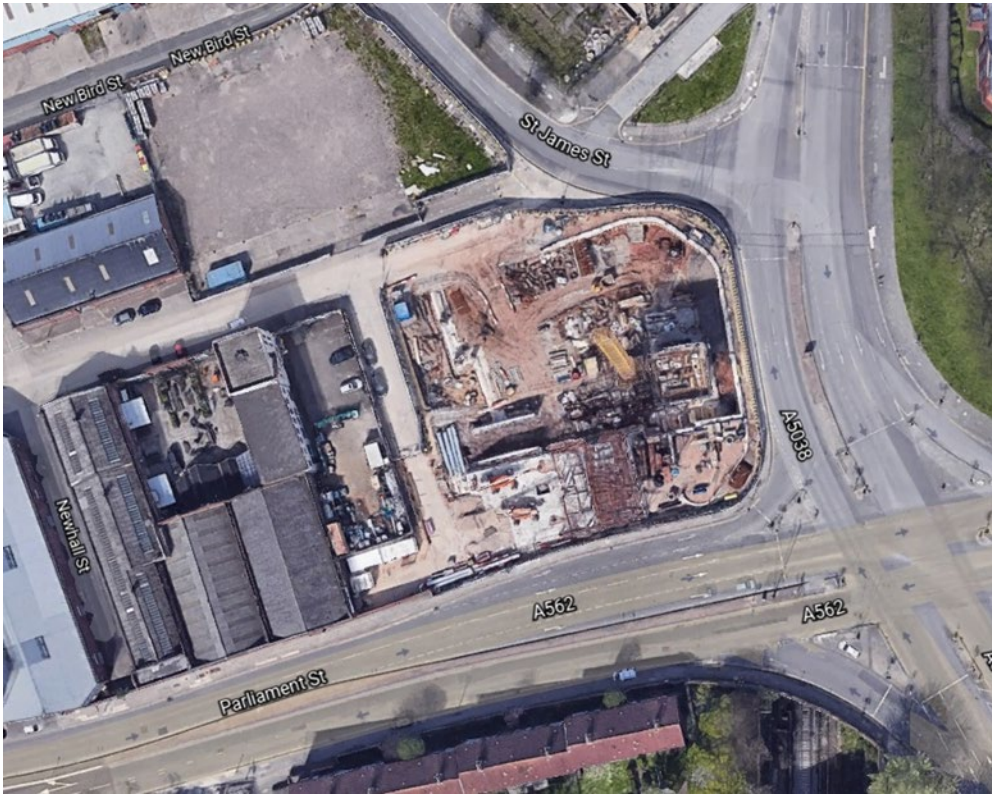


Land at corner of Upper Parliament Street & Great St George Street, Liverpool L1

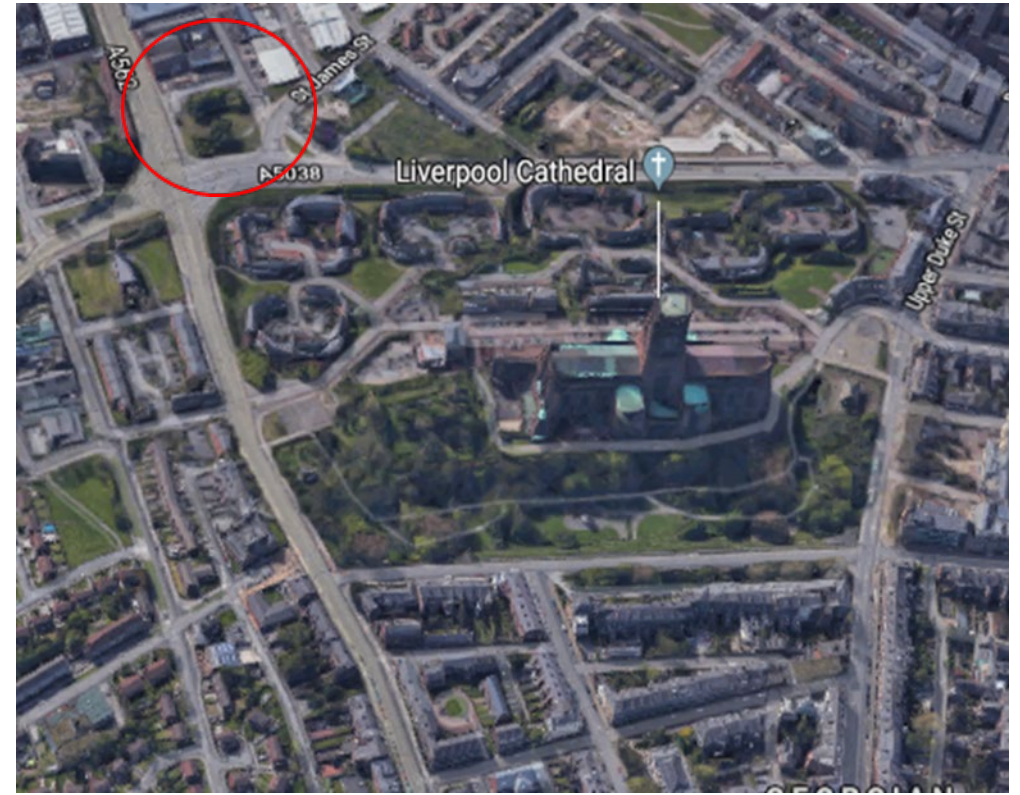
The eleven-storey new build development generally comprises:

- Demolition of adjoining structures and perimeter walls
- Site clearance and levelling
- Site investigations and trial holes
- Excavation and formation of new foundations
- Below and above ground drainage
- New ground supported and part suspended concrete floor slab
- Eighteen storey steel frame structure
- External clad and glazed envelope
- Suspended metal deck and concrete floors
- Flat roof structures and finishes
- Aluminium curtain walling, external windows and doors and shopfronts
- External balconies and balustrades
- Internal sub-division of retail units and apartments with non-loadbearing block and stud partitions
- Installation of plumbing services and mechanical services
- Installation of electrical services
- Installation of new lift car access
- Installation of kitchen and sanitary fittings
- New internal finishes, joinery fittings and decorations

Site Location



Aerial View of the site prior to demolition



Aerial view of the site location of Parliament Square

Building Structure

Parliament Square, Liverpool
New Build Development

Sub-Structure & Super-Structure Progress

November 2023

| | |
|--|---------------|
| Basement slab construction | 100% complete |
| Ground floor slab construction | 100% complete |
| Concrete deck floor construction to upper floors | 100% complete |
| Lift and staircase core concrete structure | 100% complete |
| Concrete frame structure | 100% complete |
| Internal staircase structure | 100% complete |
| Structural framework forming external walls | 100% complete |
| Scaffolding & mast climber access | 100% complete |
| Flat roof covering including balconies | 83% complete |
| Weatherboarding | 99% complete |
| External windows / doors | 99% complete |
| Curtain walling | 0% complete |
| Brickwork & insulation | 79% complete |
| External wall cladding and insulation | 58% complete |

Sub-Structure & Super-Structure Progress

November 2023



Block D Section B – Viewed from Parliament Street



Block D Section A – Viewed from Greenland Street

Sub-Structure & Super-Structure Progress

November 2023



Block D Section B and C – Viewed from Parliament Street



Block D Section A, B and C – Viewed from Greenland Street

Sub-Structure & Super-Structure Progress

November 2023



Block D Section B – Viewed from Crump Street



Block D Section A & C – Viewed from Crump Street

Sub-Structure & Super-Structure Progress

November 2023



Balcony cladding installation progressed



Balcony cladding installation progressed

Sub-Structure & Super-Structure Progress

November 2023



Section B - cladding installation progressing



Section A - cladding installation progressing

Sub-Structure & Super-Structure Progress

November 2023



Section B – cladding installation progressing



Section B – brickwork and cladding installation progressing

Sub-Structure & Super-Structure Progress

November 2023



Section B – cladding installation progressed



Section A – cladding installation progressed

Sub-Structure & Super-Structure Progress

November 2023



Drainage connection works ongoing



Substation construction complete

Internal Fit-out Block 'D'

Parliament Square, Liverpool
New Build Development

Internal Fit-out Progress

November 2023

| | |
|-------------------------------------|----------------|
| Lift installation | 0% complete |
| Partition walls installation | 96.7% complete |
| Apartment ceiling installation | 96.3% complete |
| Plaster finishes walls and ceilings | 95% complete |
| 1st fix electrical | 95% complete |
| 1st fix plumbing and heating | 97% complete |
| Kitchen units and appliances | 95% complete |
| Second fix electrical | 87% complete |
| Second fix plumbing and heating | 85% complete |
| Doorframes | 81% complete |
| Bathroom sanitary fittings | 94% complete |
| Wall and floor tiling | 92% complete |
| Carpet and floor finishes | 60% complete |
| Doors and ironmongery | 83% complete |
| Decorations | 45% complete |

Internal Fit-out Progress

November 2023



[Show Apartment](#)



[Show Apartment](#)

Internal Fit-out Progress

November 2023



[Show Apartment](#)



[Show Apartment](#)

Internal Fit-out Progress

November 2023



[Show Apartment](#)



[Show Apartment](#)

Internal Fit-out Progress

November 2023



Show Apartment



Show Apartment

Internal Fit-out Progress

November 2023



Show Apartment



Show Apartment

Internal Fit-out Progress

November 2023



Show Apartment



Show Apartment

Internal Fit-out Progress

November 2023



Show Apartment



Show Apartment

Internal Fit-out Progress

November 2023



[Show Apartment](#)



[Show Apartment](#)

Internal Fit-out Progress

November 2023



[Show Apartment](#)



[Show Apartment](#)

Internal Fit-out Progress

November 2023



[Show Apartment](#)



[Show Apartment](#)

Internal Fit-out Progress

November 2023



Show Apartment



Show Apartment

Internal Fit-out Progress

November 2023



[Show Apartment](#)



[Show Apartment](#)

Internal Fit-out Progress

November 2023



[Show Apartment](#)



[Show Apartment](#)

Internal Fit-out Progress

November 2023



Show Apartment



Show Apartment

Internal Fit-out Progress

November 2023



Show Apartment



Show Apartment

Internal Fit-out Progress

November 2023



Kitchen installation ongoing



Sanitary installation ongoing

Internal Fit-out Progress

November 2023



Second fix electrical ongoing



Second fix mechanical ongoing

Internal Fit-out Progress

November 2023



Sanitary installation ongoing



Second fix mechanical ongoing

Internal Fit-out Progress

November 2023



Apartment fit-out ongoing



Kitchen installation ongoing

Internal Fit-out Progress

November 2023



Apartment fit-out ongoing



Panel heater installation progressing

Internal Fit-out Progress

November 2023



Apartment fit-out ongoing



Kitchen installation progressing

Internal Fit-out Progress

November 2023



Water meters installed



Ventilation system installed

Internal Fit-out Progress

November 2023



Plaster skim coat ongoing



Plaster skim coat ongoing

Internal Fit-out Progress

November 2023



Plaster skim coat ongoing



Plaster skim coat ongoing

TO FIND OUT MORE ABOUT

Parliament Square, Liverpool

PLEASE CONTACT

legacie

WWW.LEGACIE.CO.UK

By Appointment Only
Unit 4 Connect Business Village
Liverpool, L5 9PR
+44 (0) 151 207 9990