

legacie



Parliament Square Block 'D' Investors Report

IR29 October 2023

Parliament Square – Phase 1 Block D

97 Luxury Apartments



Land at corner of Upper Parliament Street & Great St George Street, Liverpool L1

Schedule of Accommodation Block 'D'

Basement

- Car parking
- Sub-Station
- Plant

Ground Floor

- Retail units
- Refuse store
- Hard and soft landscaping

Floors 1 - 11

- 31 no. Studio Apartments
- 22no. 1 Bedroom Apartments
- 44 no. 2 Bedroom Apartments

New Build Two Phase Development to Create Residential Apartments Retail Units & Basement Parking

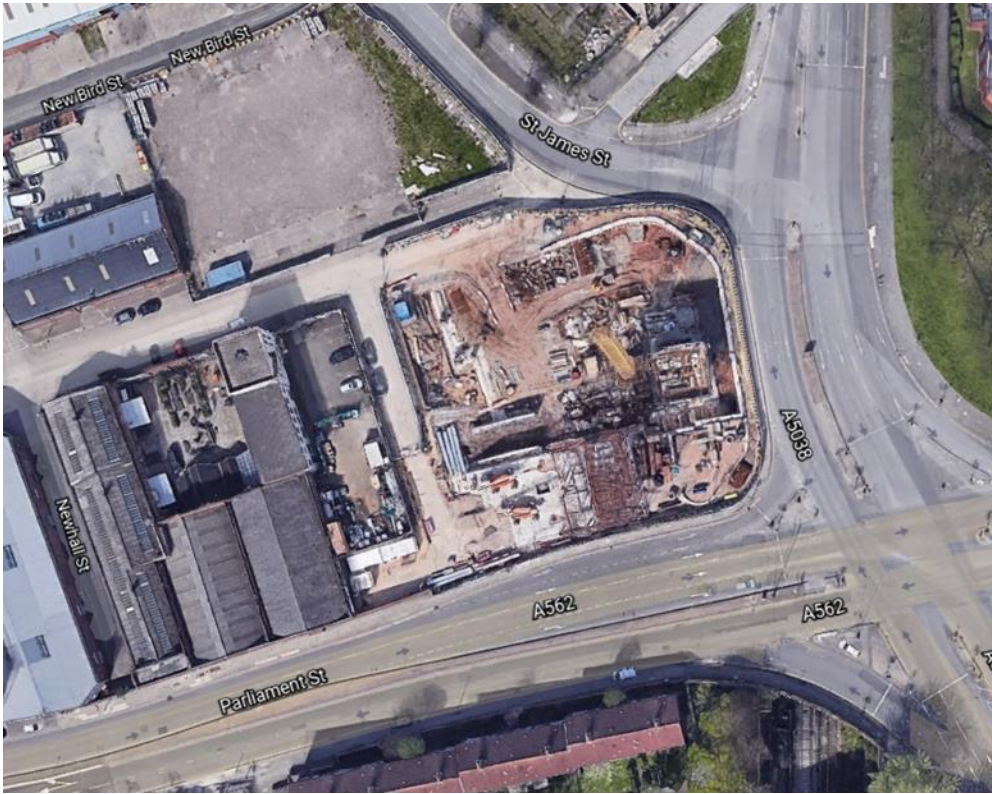


Land at corner of Upper Parliament Street & Great St George Street, Liverpool L1

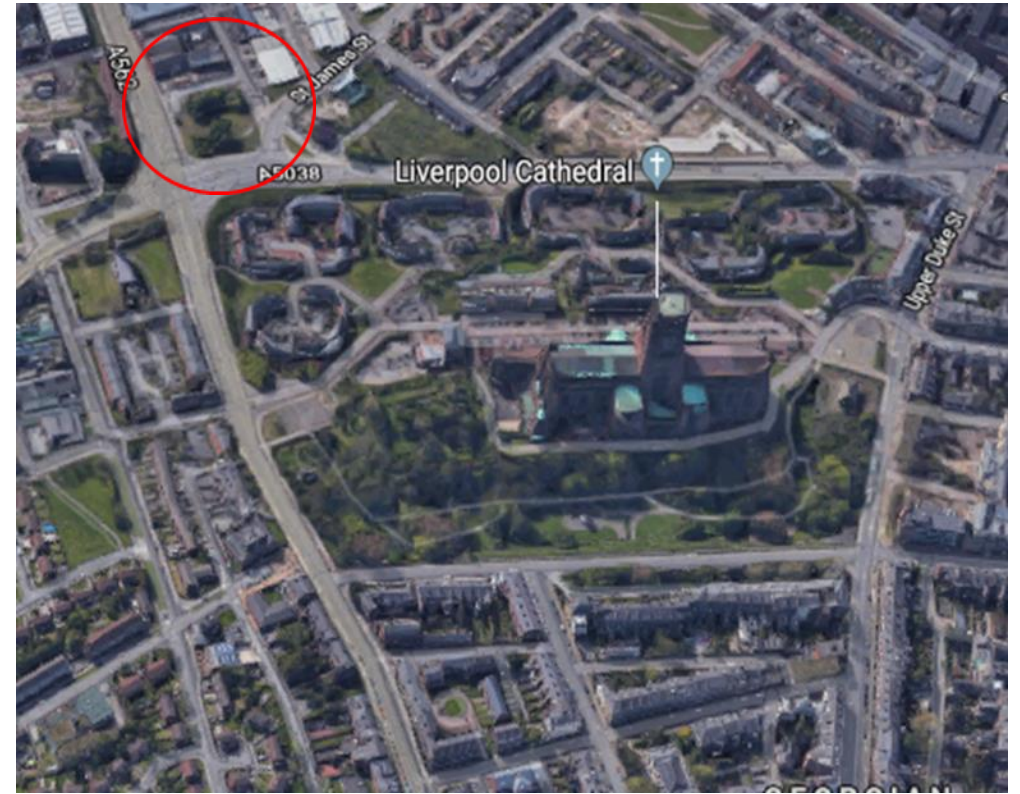
The eleven storey new build development generally comprises:

- Demolition of adjoining structures and perimeter walls
- Site clearance and levelling
- Site investigations and trial holes
- Excavation and formation of new foundations
- Below and above ground drainage
- New ground supported and part suspended concrete floor slab
- Eighteen storeys steel frame structure
- External clad and glazed envelope
- Suspended metal deck and concrete floors
- Flat roof structures and finishes
- Aluminium curtain walling, external windows and doors and shopfronts
- External balconies and balustrades
- Internal sub-division of retail units and apartments with non-loadbearing block and stud partitions
- Installation of plumbing services and mechanical services
- Installation of electrical services
- Installation of new lift car access
- Installation of kitchen and sanitary fittings
- New internal finishes, joinery fittings and decorations

Site Location



Aerial View of the site prior to demolition



Aerial view of the site location of Parliament Square

Building Structure

Parliament Square, Liverpool
New Build Development

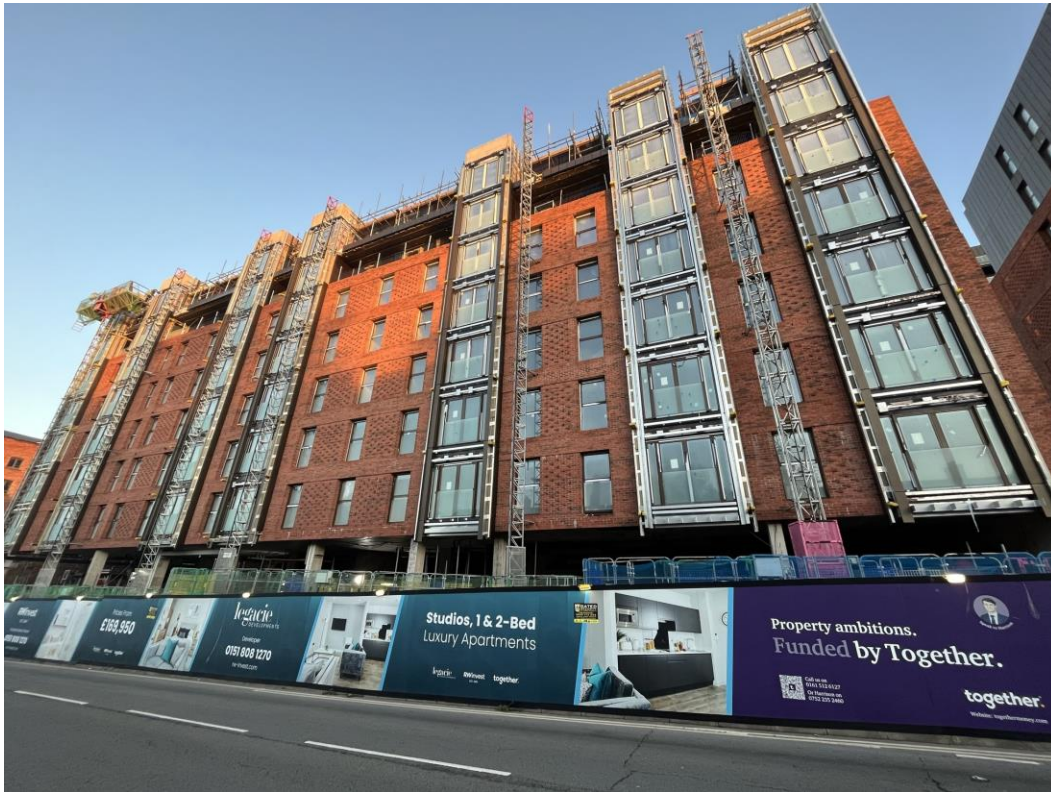
Sub-Structure & Super-Structure Progress

October 2023

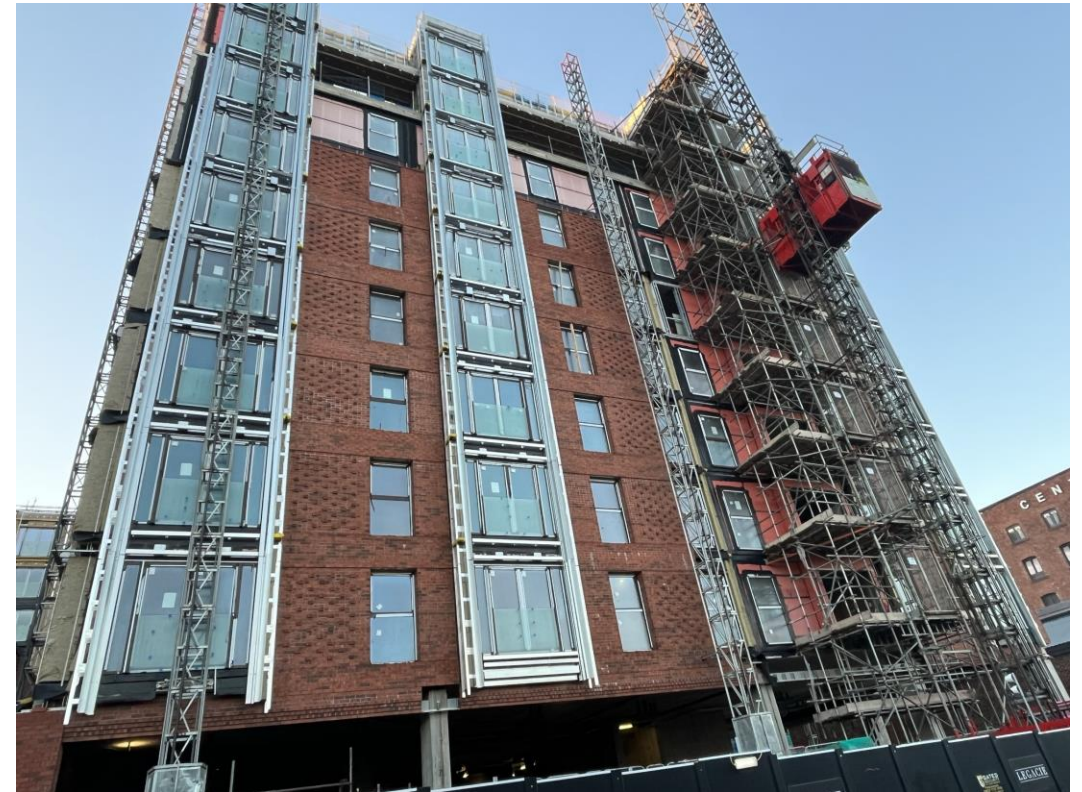
Basement slab construction	100% complete
Ground floor slab construction	100% complete
Concrete deck floor construction to upper floors	100% complete
Lift and staircase core concrete structure	100% complete
Concrete frame structure	100% complete
Internal staircase structure	100% complete
Structural framework forming external walls	99% complete
Scaffolding & mast climber access	100% complete
Flat roof covering including balconies	79% complete
Weatherboarding	99% complete
External windows / doors	99% complete
Curta in walling	0% complete
Brickwork & insulation	76% complete
External wall cladding and insulation	42% complete

Sub-Structure & Super-Structure Progress

October 2023



Block D Section B – Viewed from Parliament Street



Block D Section A – Viewed from Greenland Street

Sub-Structure & Super-Structure Progress

October 2023



Block D Section B and C – Viewed from Parliament Street



Block D Section A, B and C – Viewed from Greenland Street

Sub-Structure & Super-Structure Progress

October 2023



Block D Section B – Viewed from Crump Street



Block D Section A & C – Viewed from Crump Street

Sub-Structure & Super-Structure Progress

October 2023



Balcony cladding installation progressed



Balcony cladding installation progressed

Sub-Structure & Super-Structure Progress

October 2023



Balcony cladding installation progressed



Balcony cladding installation progressed

Sub-Structure & Super-Structure Progress

October 2023



Balcony cladding installation progressed



Block D Section A – Viewed from roof terrace

Sub-Structure & Super-Structure Progress

October 2023



Block D – viewed from Block B podium



Block D – viewed from Block B podium

Sub-Structure & Super-Structure Progress

October 2023



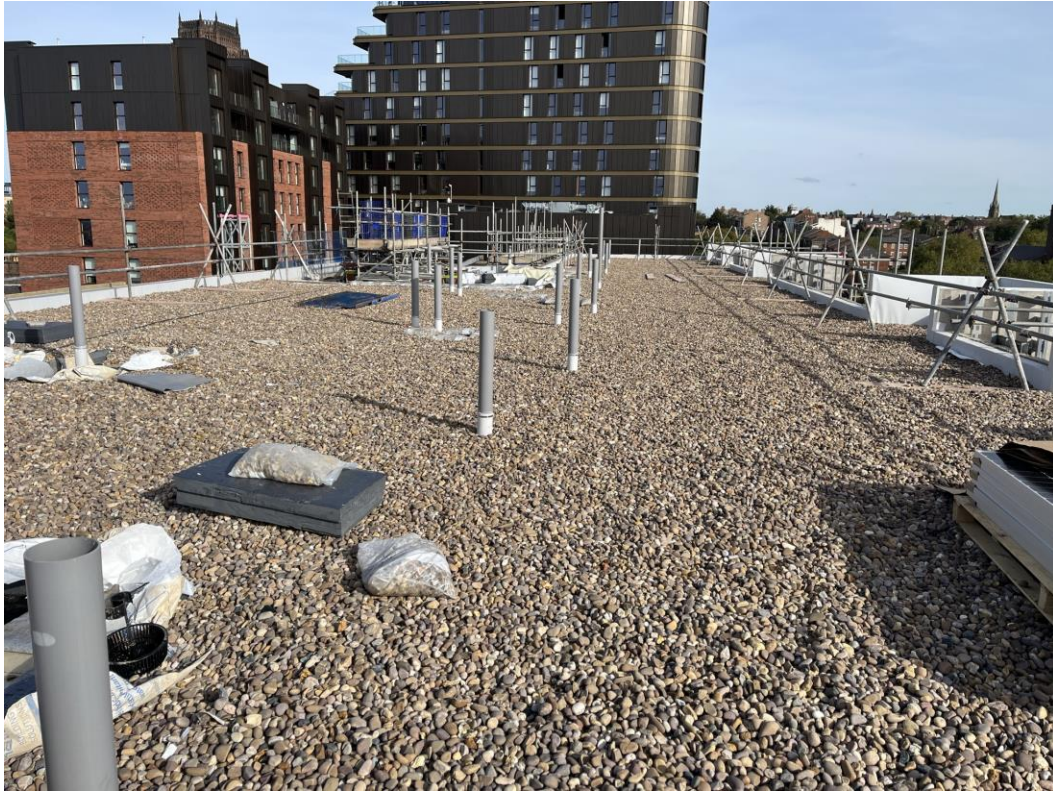
Block D Section A – Roof installation progressing



Block D Section A – Roof installation complete

Sub-Structure & Super-Structure Progress

October 2023



Block D Section B – Roof installation progressing



Block D Section B – Photovoltaics on site

Sub-Structure & Super-Structure Progress

October 2023



Block D Section A – Soil vent pipe installation



Block D Section C – Podium construction ongoing

Internal Fit-out Block 'D'

Parliament Square, Liverpool
New Build Development

Internal Fit-out Progress

October 2023

Lift installation	0% complete
Partition walls installation	95.5% complete
Apartment ceiling installation	93% complete
Plaster finishes walls and ceilings	88.5% complete
1st fix electrical	85% complete
1st fix plumbing and heating	94% complete
Kitchen units and appliances	53% complete
Second fix electrical	52% complete
Second fix plumbing and heating	62% complete
Doorframes	63% complete
Bathroom sanitary fittings	85% complete
Wall and floor tiling	90% complete
Carpet and floor finishes	34% complete
Doors and ironmongery	63% complete
Decorations	28% complete

Internal Fit-out Progress

October 2023



Show Apartment



Show Apartment

Internal Fit-out Progress

October 2023



[Show Apartment](#)



[Show Apartment](#)

Internal Fit-out Progress

September 2023



[Show Apartment](#)



[Show Apartment](#)

Internal Fit-out Progress

October 2023



Show Apartment



Show Apartment

Internal Fit-out Progress

October 2023



[Show Apartment](#)



[Show Apartment](#)

Internal Fit-out Progress

October 2023



[Show Apartment](#)



[Show Apartment](#)

Internal Fit-out Progress

October 2023



[Show Apartment](#)



[Show Apartment](#)

Internal Fit-out Progress

October 2023



Mist coat application ongoing



Mist coat application ongoing

Internal Fit-out Progress

October 2023



Wall covering installation ongoing



Wall covering installation ongoing

Internal Fit-out Progress

October 2023



Electrical heater installation ongoing



Final fix installation ongoing

Internal Fit-out Progress

October 2023



Laminate flooring installation ongoing



Laminate flooring installation ongoing

Internal Fit-out Progress

October 2023



Installation of kitchen units ongoing



Installation of kitchen worktop ongoing

Internal Fit-out Progress

October 2023



Sink installation ongoing



Tap installation ongoing

Internal Fit-out Progress

October 2023



Appliance installation ongoing



Appliance installation ongoing

Internal Fit-out Progress

October 2023



Appliance installation ongoing



Appliance installation ongoing

Internal Fit-out Progress

October 2023



Sanitary installation ongoing



Sanitary installation ongoing

Internal Fit-out Progress

October 2023



Sanitary installation ongoing



Skirting board installation ongoing

Internal Fit-out Progress

October 2023



M&E installation progressing



Distribution installation ongoing

Internal Fit-out Progress

October 2023



Ventilation installation ongoing



Ventilation installation ongoing

Internal Fit-out Progress

October 2023



Kitchen installation ongoing



Kitchen installation ongoing

Internal Fit-out Progress

October 2023



Plaster skim coat ongoing



Plaster skim coat ongoing

Internal Fit-out Progress

October 2023



Plaster skim coat ongoing



Plaster skim coat ongoing

Internal Fit-out Progress

October 2023



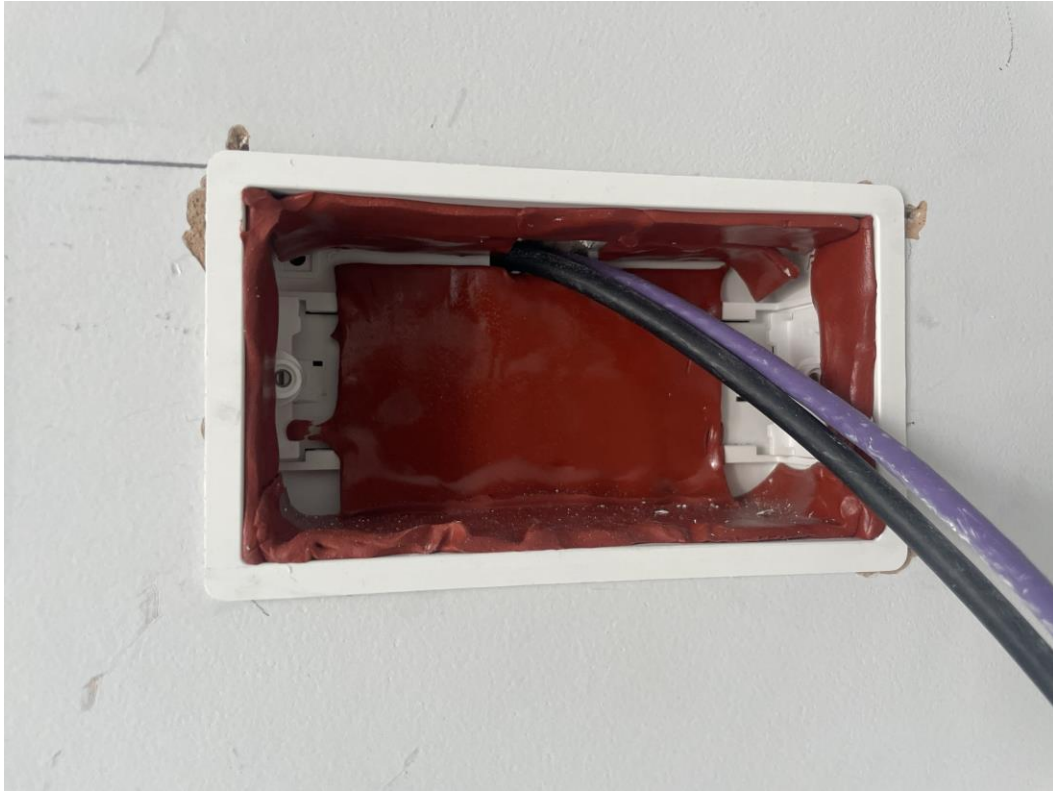
Apartments second side boarded



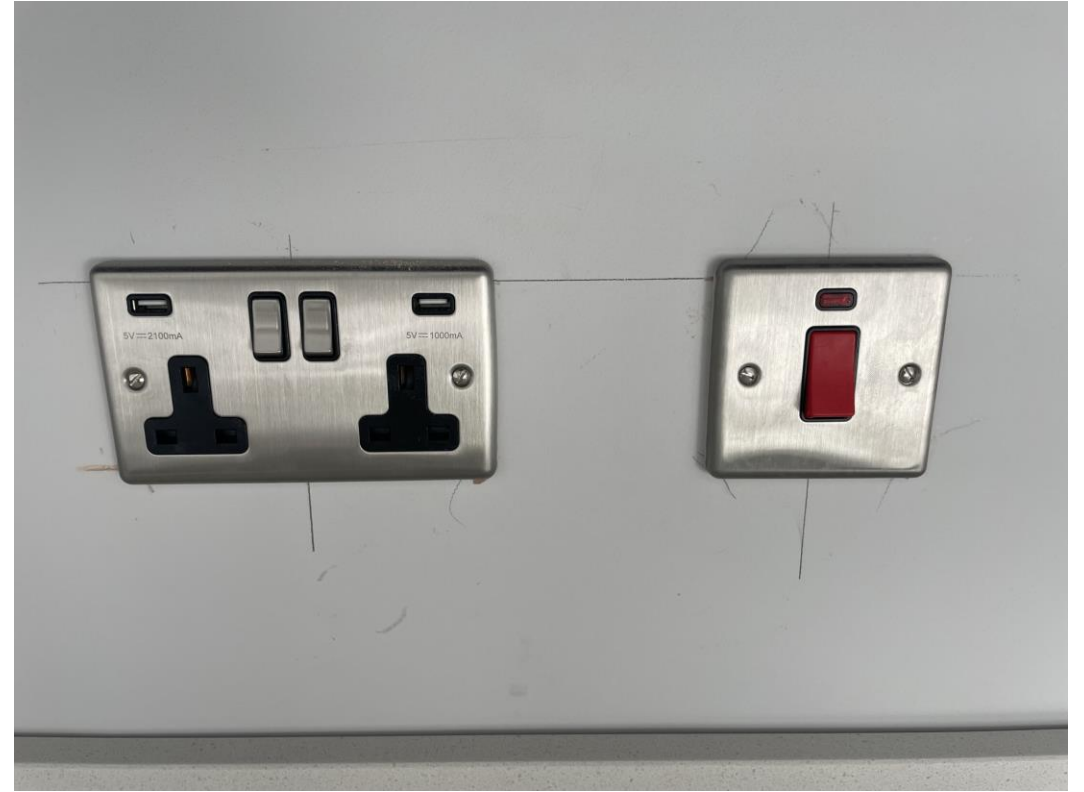
Apartments second side boarded

Internal Fit-out Progress

October 2023



Fire rated putty to socket backbox



Socket face plate installed

Internal Fit-out Progress

October 2023



Patress installation to staircore



Hoist apartment close-ups ongoing

Internal Fit-out Progress

October 2023



Pattress installation to staircore



Insulation installed to soil vent pipework

Internal Fit-out Progress

October 2023



Water tank installation ongoing



Commercial sprinkler system installation ongoing

Internal Fit-out Progress

October 2023



Lifts onsite



Cladding panels onsite

Internal Fit-out Progress

October 2023



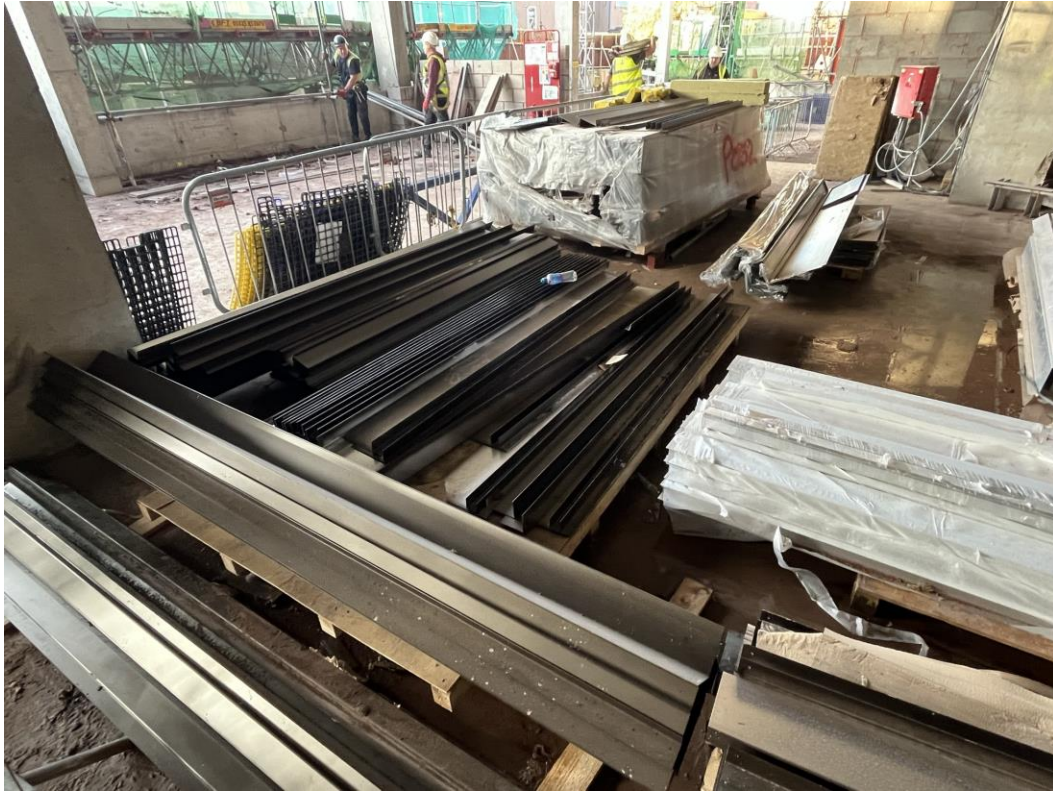
Electrical cables onsite for mains connection



Base for sprinkler tank poured

Internal Fit-out Progress

October 2023



Cladding panels onsite



Water tank installation ongoing

Internal Fit-out Progress

October 2023



Mirrors onsite



Cladding panels onsite

Internal Fit-out Progress

October 2023



Decoration equipment



Plastering equipment

TO FIND OUT MORE ABOUT

Parliament Square, Liverpool

PLEASE CONTACT

legacie

WWW.LEGACIE.CO.UK

By Appointment Only
Unit 4 Connect Business Village
Liverpool, L5 9PR
+44 (0) 151 207 9990