

legacie



# Parliament Square Block 'D' Investors Report

IR28 September 2023



# Parliament Square – Phase 1 Block D

## 97 Luxury Apartments



Land at corner of Upper Parliament Street & Great St George Street, Liverpool L1

### Schedule of Accommodation Block 'D'

#### Basement

- Car parking
- Sub-Station
- Plant

#### Ground Floor

- Retail units
- Refuse store
- Hard and soft landscaping

#### Floors 1 - 11

- 31 no. Studio Apartments
- 22no. 1 Bedroom Apartments
- 44 no. 2 Bedroom Apartments

# New Build Two Phase Development to Create Residential Apartments Retail Units & Basement Parking



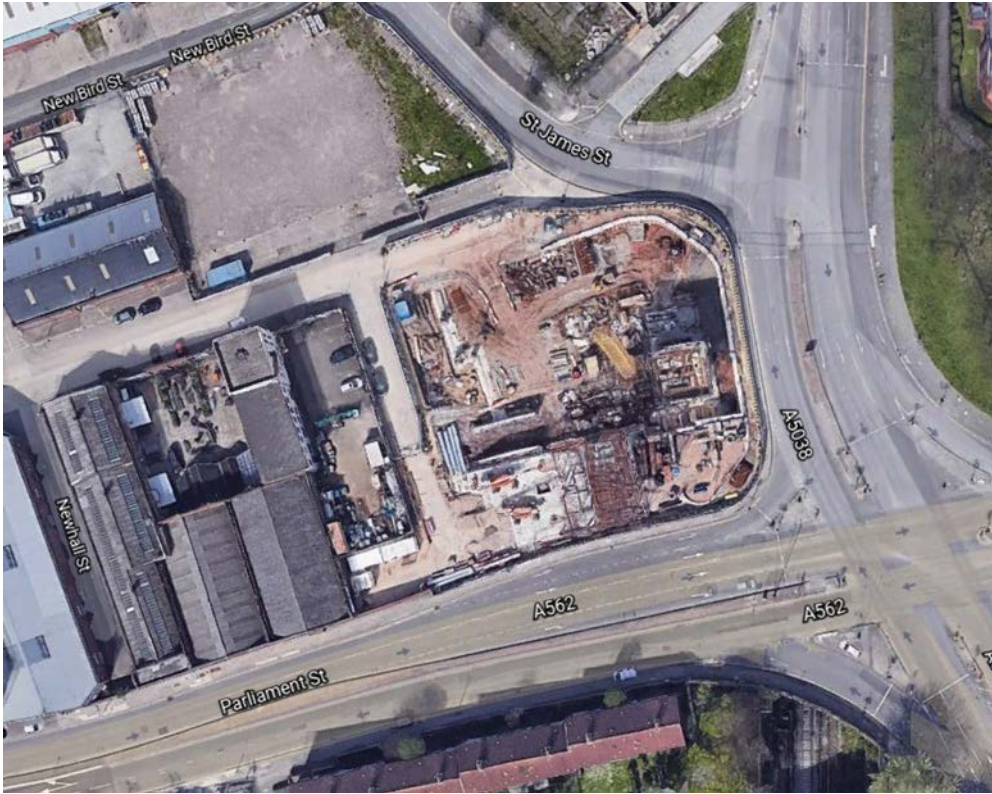
Land at corner of Upper Parliament Street & Great St George Street, Liverpool L1

## The eleven storey new build development generally comprises:

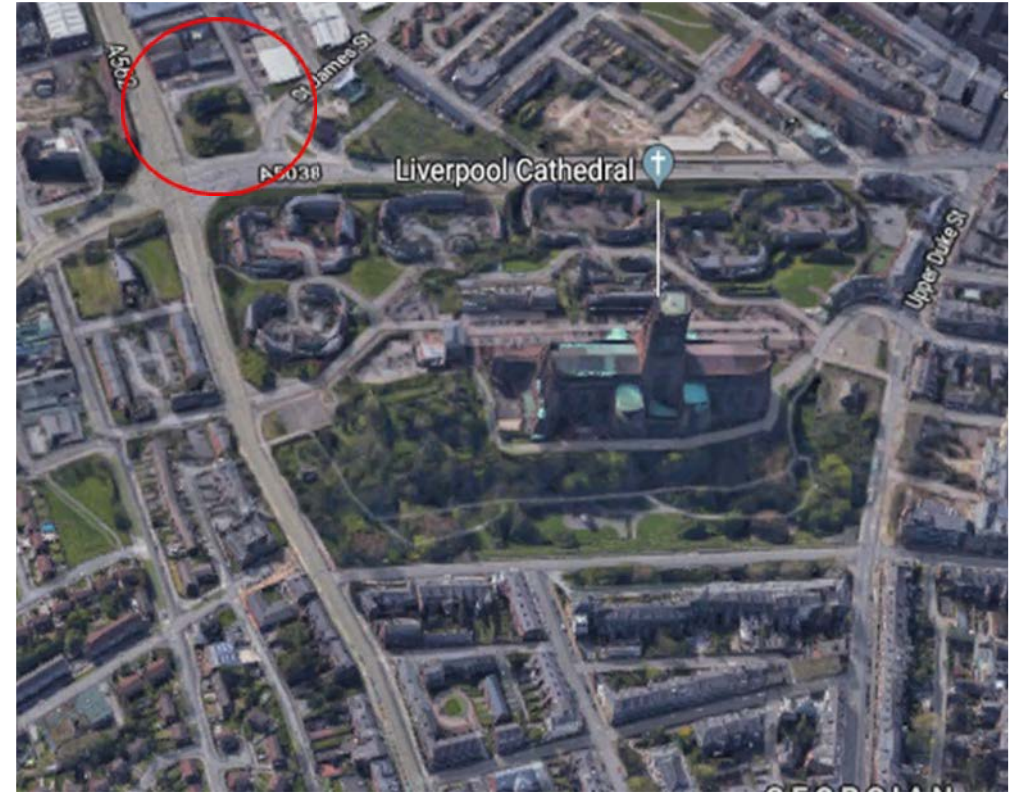
- Demolition of adjoining structures and perimeter walls
- Site clearance and levelling
- Site investigations and trial holes
- Excavation and formation of new foundations
- Below and above ground drainage
- New ground supported and part suspended concrete floor slab
- Eighteen storey steel frame structure
- External clad and glazed envelope
- Suspended metal deck and concrete floors
- Flat roof structures and finishes
- Aluminium curtain walling, external windows and doors and shopfronts
- External balconies and balustrades
- Internal sub-division of retail units and apartments with non-loadbearing block and stud partitions
- Installation of plumbing services and mechanical services
- Installation of electrical services
- Installation of new lift car access
- Installation of kitchen and sanitary fittings
- New internal finishes, joinery fittings and decorations



# Site Location



Aerial View of the site prior to demolition



Aerial view of the site location of Parliament Square

# Building Structure

Parliament Square, Liverpool  
New Build Development

# Sub-Structure & Super-Structure Progress

September 2023

Basement slab construction	100% complete
Ground floor slab construction	100% complete
Concrete deck floor construction to upper floors	100% complete
Lift and staircase core concrete structure	100% complete
Concrete frame structure	100% complete
Internal staircase structure	100% complete
Masonry walls	64% complete
Structural framework forming external walls	98% complete
Scaffolding & mast climber access	100% complete
Flat roof covering including balconies	64% complete
Weatherboarding	97% complete
External windows / doors	99% complete
Curtain walling	0% complete
Brickwork & insulation	59% complete
External wall cladding and insulation	42% complete



# Sub-Structure & Super-Structure Progress

September 2023



Block D Section B – Viewed from Parliament Street

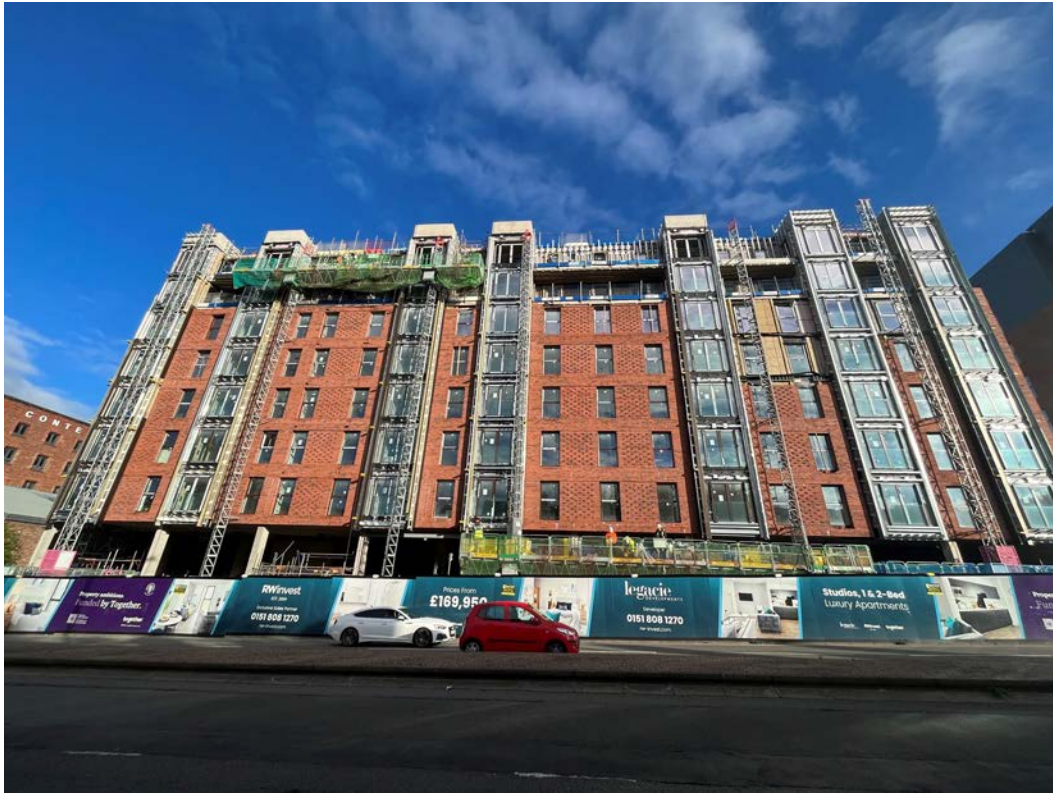


Block D Section B – Viewed from Parliament Street



# Sub-Structure & Super-Structure Progress

September 2023



Block D Section B – Viewed from Parliament Street



Block D Section B – Brickwork complete to gable end



# Sub-Structure & Super-Structure Progress

September 2023



Block D Section B – Installation of external cladding ongoing



Block D Section B – Installation of external cladding ongoing



# Sub-Structure & Super-Structure Progress

September 2023



Block D Section B, C & A – Viewed from Crump Street

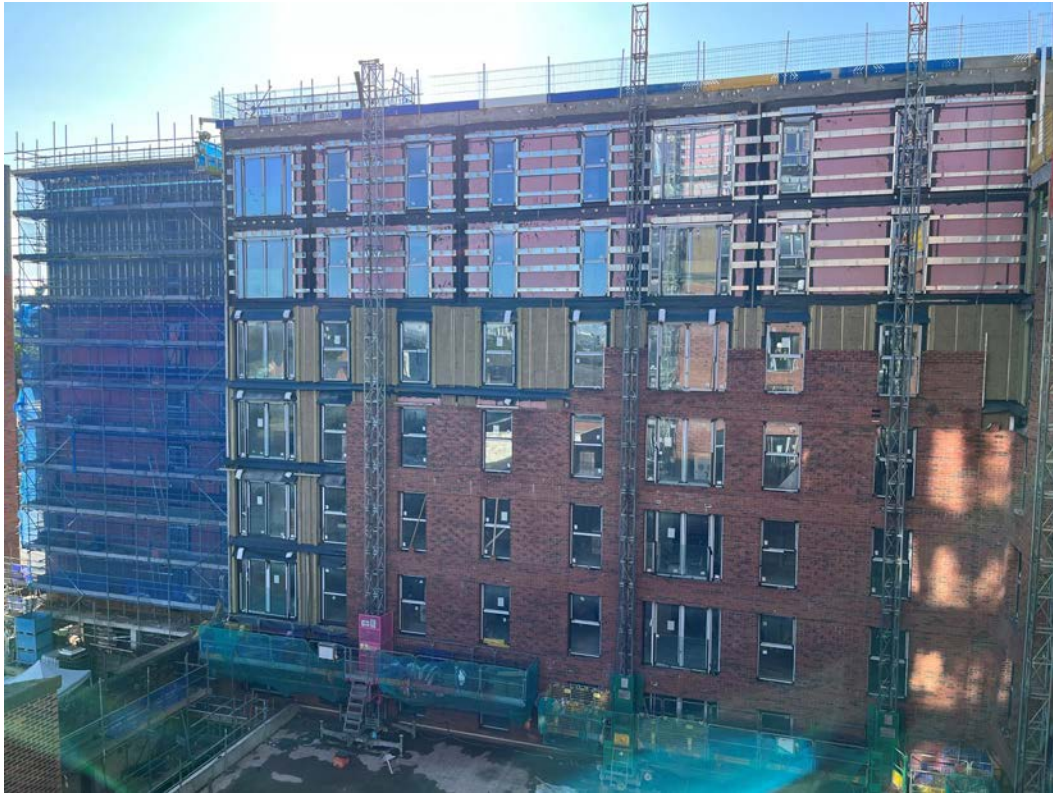


Block D Section C – Viewed from Crump Street

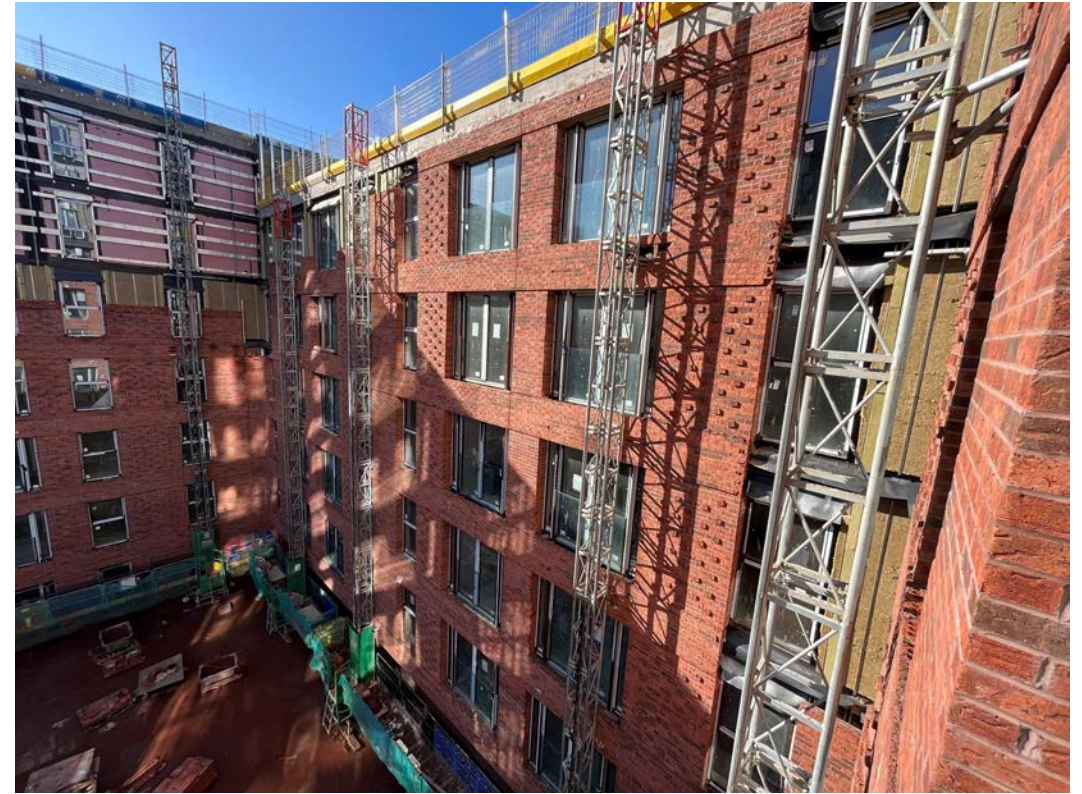


# Sub-Structure & Super-Structure Progress

September 2023



Block D Section B – Mast climbers



Block D Section A – Mast climbers

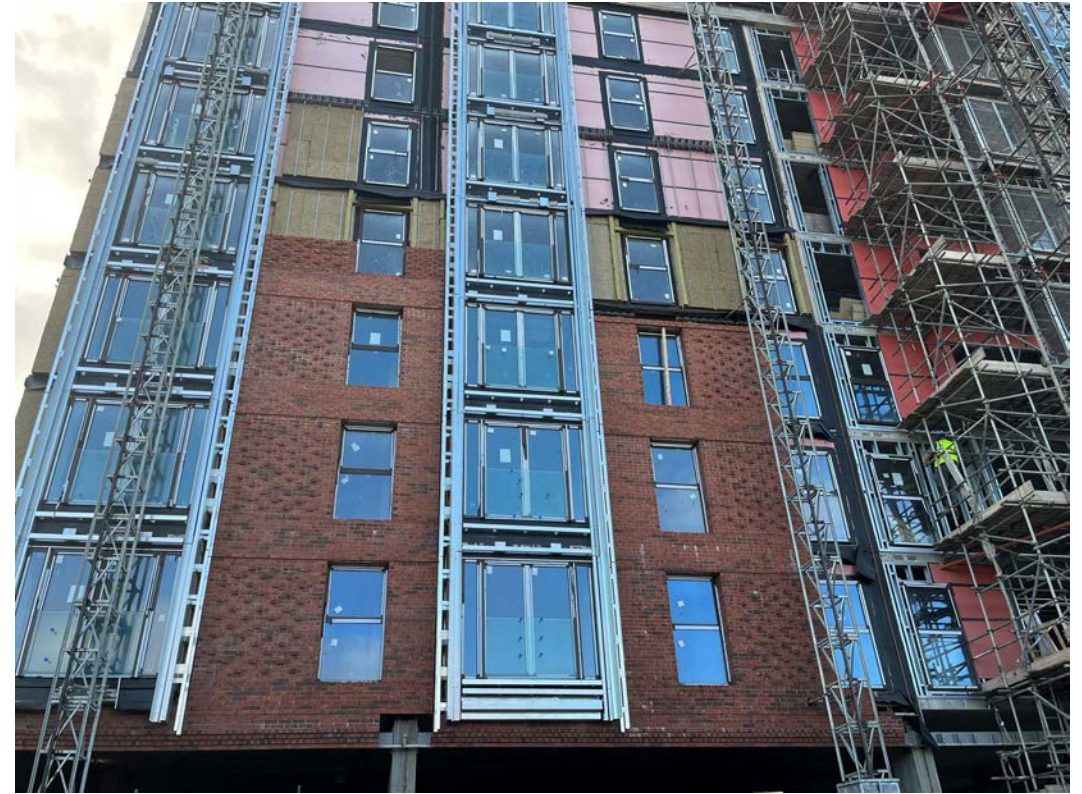


# Sub-Structure & Super-Structure Progress

September 2023



Block D Section A – Viewed from Greenland Street

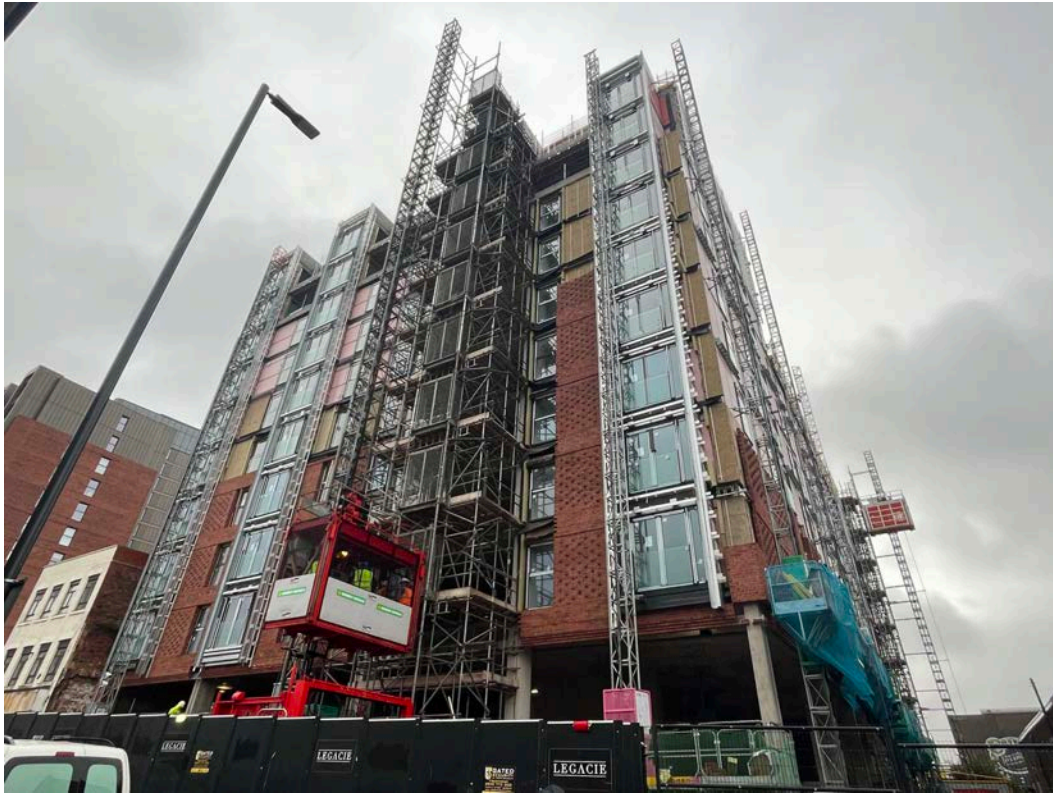


Block D Section A – External brickwork ongoing



# Sub-Structure & Super-Structure Progress

September 2023



Block D Section A, C & B – Viewed from Greenland Street



Block D Section A and C – External insulation and brickwork ongoing



# Sub-Structure & Super-Structure Progress

September 2023



Block D Section C – Newhall Street



Block D Section A – Cladding brackets installed

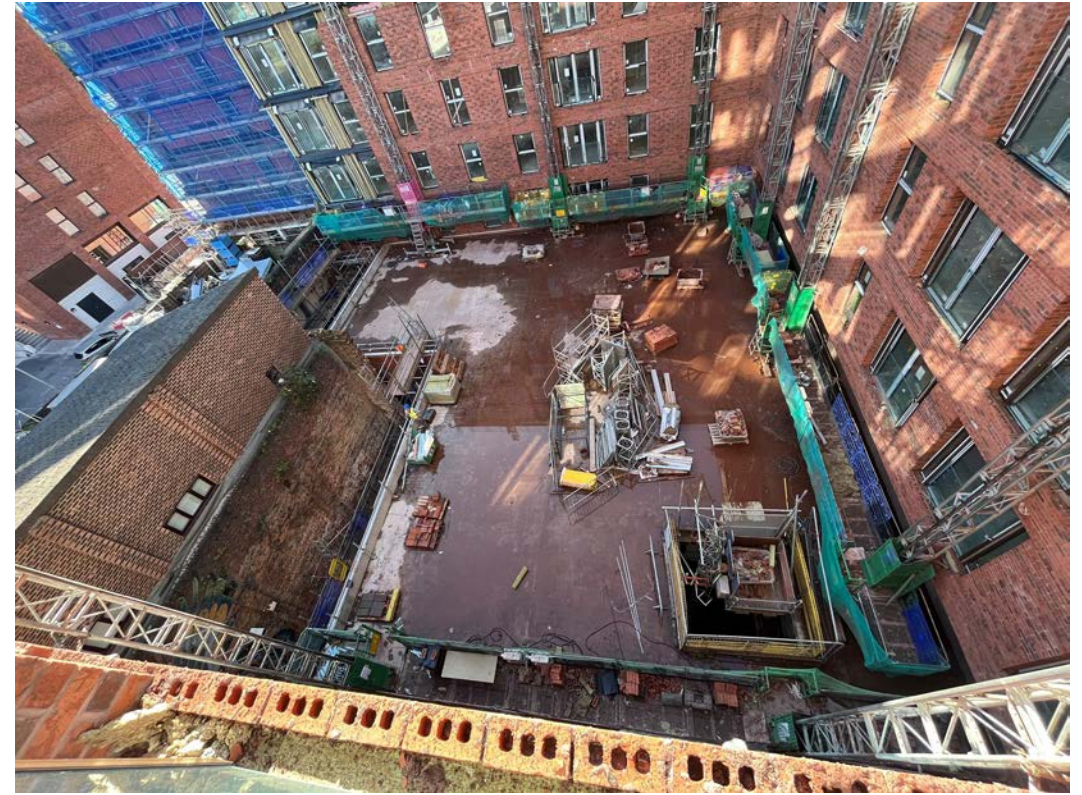


# Sub-Structure & Super-Structure Progress

September 2023



Block D Section A – External insulation and brickwork ongoing



Block D Section C – Podium



# Sub-Structure & Super-Structure Progress

September 2023



Block D Section A – External brickwork and insulation installation



Block D Section A – External cladding ongoing



# Sub-Structure & Super-Structure Progress

September 2023



Block D Section A – Flat roof covering ongoing



Block D Section A – Flat roof covering ongoing



# Sub-Structure & Super-Structure Progress

September 2023



Block D Section A – Concrete slab



Block D Section A – Concrete slab



# Sub-Structure & Super-Structure Progress

September 2023



Steel supports installed for curtain wall



Steel supports installed for curtain wall

# Internal Fit-out Block 'D'

Parliament Square, Liverpool  
New Build Development



# Internal Fit-out Progress

September 2023

Core drilling for services	0% complete
Riser installation	0% complete
Lift installation	0% complete
Above ground drainage	90% complete
Partition walls installation	89% complete
Apartment ceiling installation	82% complete
Plaster finishes walls and ceilings	81% complete
1st fix electrical	85% complete
1st fix plumbing and heating	92% complete
Kitchen units and appliances	39% complete
Doorframes	48% complete
Skirting and architrave	38% complete
Bathroom sanitary fittings	72% complete
Wall and floor tiling	82% complete
Carpet and floor finishes	34% complete
Doors and ironmongery	38% complete
Decorations	21% complete
Second fix electrical	32% complete
Second fix plumbing and heating	39% complete
General fixtures and fittings	0% complete

# Internal Fit-out Progress

September 2023



Show Apartment



Show Apartment



# Internal Fit-out Progress

September 2023



[Show Apartment](#)



[Show Apartment](#)

# Internal Fit-out Progress

September 2023



[Show Apartment](#)



[Show Apartment](#)



# Internal Fit-out Progress

September 2023



Show Apartment



Show Apartment

# Internal Fit-out Progress

September 2023



[Show Apartment](#)



[Show Apartment](#)



# Internal Fit-out Progress

September 2023



[Show Apartment](#)



[Show Apartment](#)

# Internal Fit-out Progress

September 2023



[Show Apartment](#)



[Show Apartment](#)



# Internal Fit-out Progress

September 2023



Installation of kitchen appliances ongoing



Installation of kitchen appliances ongoing

# Internal Fit-out Progress

September 2023



Sanitaryware installation ongoing



Sanitaryware installation ongoing



# Internal Fit-out Progress

September 2023



Wall and floor tile installation ongoing



Sanitaryware installation ongoing

# Internal Fit-out Progress

September 2023



Heated towel rail installation ongoing



Mirror installation ongoing



# Internal Fit-out Progress

September 2023



Electrical wall heater installation ongoing



2nd fix mechanical installation ongoing

# Internal Fit-out Progress

September 2023



2nd fix electrical installation ongoing



2nd fix electrical installation ongoing



# Internal Fit-out Progress

September 2023



Internal joinery and doors installation ongoing



Ironmongery installation ongoing

# Internal Fit-out Progress

September 2023



Installation of kitchen units and worktops ongoing



Installation of kitchen units and appliances ongoing



# Internal Fit-out Progress

September 2023



Cylinder cupboard floor installation ongoing



Door threshold strip installation ongoing

# Internal Fit-out Progress

September 2023



Laminate flooring and protection installation ongoing



Window and skirting boards installation ongoing



# Internal Fit-out Progress

September 2023



Preparation for screed application ongoing



Self-levelling screed application ongoing

# Internal Fit-out Progress

September 2023



Internal finishes ongoing



Internal finishes ongoing



# Internal Fit-out Progress

September 2023



Internal finishes ongoing



Internal finishes ongoing

# Internal Fit-out Progress

September 2023



Internal finishes ongoing



Internal finishes ongoing



# Internal Fit-out Progress

September 2023



Plaster skim walls and ceiling application ongoing



Plaster skim walls and ceiling application ongoing

# Internal Fit-out Progress

September 2023



Plaster skim walls and ceiling application ongoing



Plaster skim walls and ceiling application ongoing



# Internal Fit-out Progress

September 2023



Pan installation and formation IPS ongoing



2<sup>nd</sup> side boarding of walls and ceilings ongoing

# Internal Fit-out Progress

September 2023



1<sup>st</sup> side boarding of walls and insulation installation ongoing



Pattress installation ongoing



# Internal Fit-out Progress

September 2023



1<sup>st</sup> side boarding of walls and pattress installation ongoing



2<sup>nd</sup> side boarding of walls and internal joinery ongoing

# Internal Fit-out Progress

September 2023



1<sup>st</sup> fix electrical installation ongoing

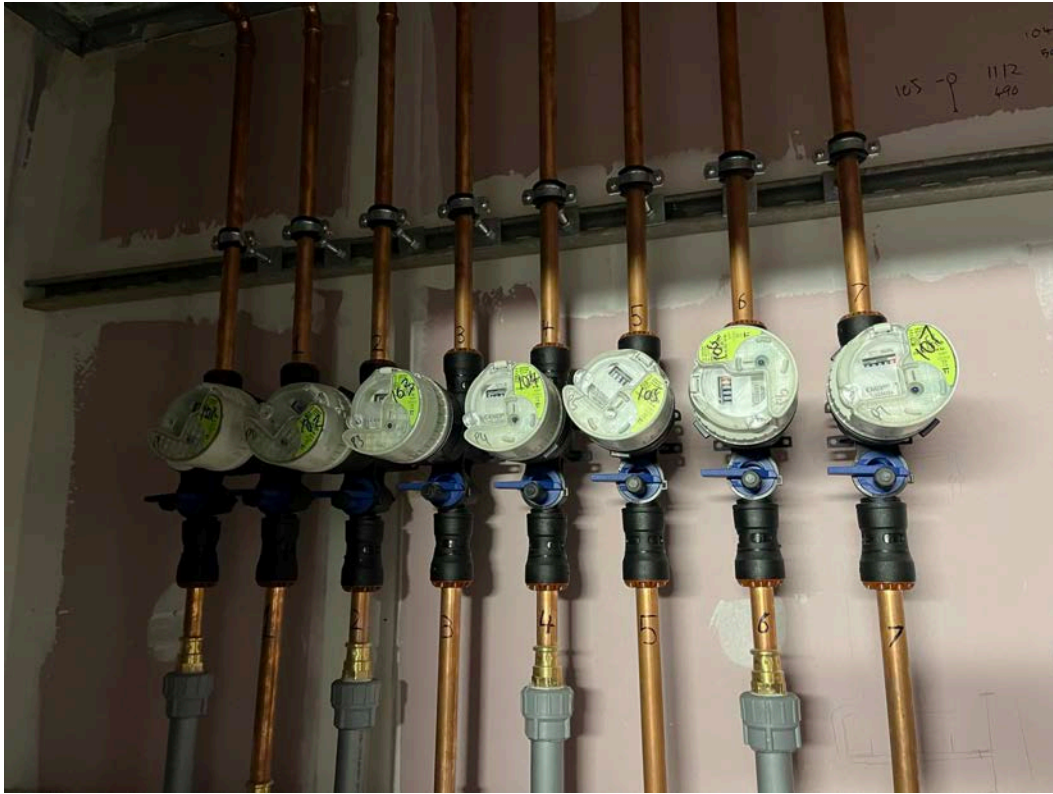


Metal ceiling grid installation ongoing



# Internal Fit-out Progress

September 2023



Water meters installed



Door frames on site

# Internal Fit-out Progress

September 2023



External wall insulation on site



Masonry on site



# Internal Fit-out Progress

September 2023



Cavity barrier on site



Cladding on site



# Internal Fit-out Progress

September 2023



Self-levelling screed on site



Laminate flooring on site



# Internal Fit-out Progress

September 2023



Ventilation unit on site



Kitchen appliances on site

# Internal Fit-out Progress

September 2023



Internal doors on site



Kitchen units on site



# Internal Fit-out Progress

September 2023



Sprinkler water tank on site



Hot water tanks on site

TO FIND OUT MORE ABOUT

Parliament Square, Liverpool

PLEASE CONTACT

legacie

WWW.LEGACIE.CO.UK

By Appointment Only  
Unit 4 Connect Business Village  
Liverpool, L5 9PR  
+44 (0) 151 207 9990