

legacie



Parliament Square Block 'D' Investors Report

IR27 August 2023

Parliament Square – Phase 1 Block D

97 Luxury Apartments



Land at corner of Upper Parliament Street & Great St George Street, Liverpool L1

Schedule of Accommodation Block 'D'

Basement

- Car parking
- Sub-Station
- Plant

Ground Floor

- Retail units
- Refuse store
- Hard and soft landscaping

Floors 1 - 11

- 31 no. Studio Apartments
- 22no. 1 Bedroom Apartments
- 44 no. 2 Bedroom Apartments

New Build Two Phase Development to Create Residential Apartments Retail Units & Basement Parking

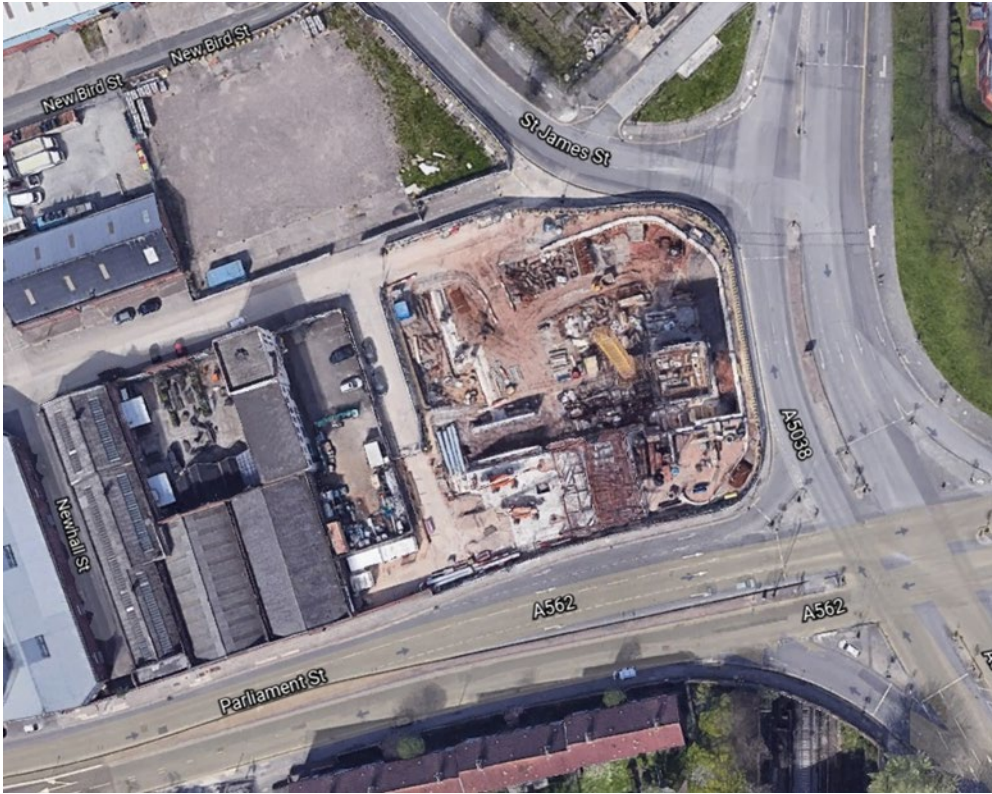


Land at corner of Upper Parliament Street & Great St George Street, Liverpool L1

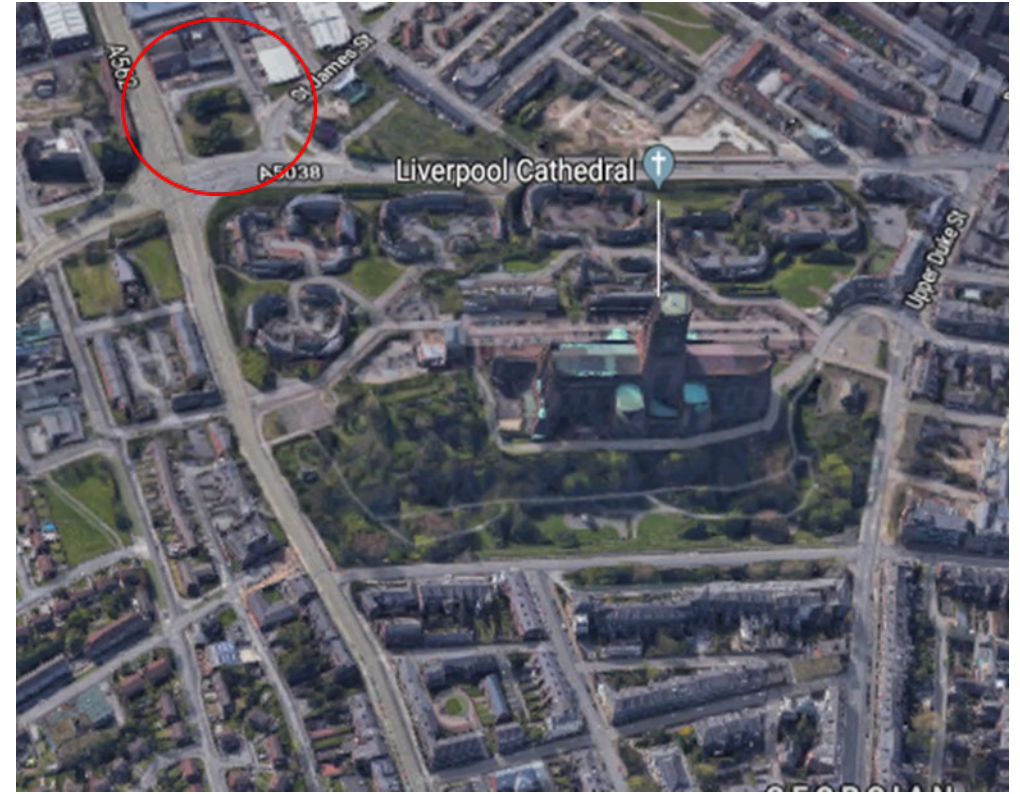
The eleven storey new build development generally comprises:

- Demolition of adjoining structures and perimeter walls
- Site clearance and levelling
- Site investigations and trial holes
- Excavation and formation of new foundations
- Below and above ground drainage
- New ground supported and part suspended concrete floor slab
- Eighteen storey steel frame structure
- External clad and glazed envelope
- Suspended metal deck and concrete floors
- Flat roof structures and finishes
- Aluminium curtain walling, external windows and doors and shopfronts
- External balconies and balustrades
- Internal sub-division of retail units and apartments with non-loadbearing block and stud partitions
- Installation of plumbing services and mechanical services
- Installation of electrical services
- Installation of new lift car access
- Installation of kitchen and sanitary fittings
- New internal finishes, joinery fittings and decorations

Site Location



Aerial View of the site prior to demolition



Aerial view of the site location of Parliament Square

Building Structure

Parliament Square, Liverpool
New Build Development

Sub-Structure & Super-Structure Progress

August 2023

Site investigations	100% complete
Site compound and temporary supplies	100% complete
Demolition and site clearance	100% complete
Ground infill and site levelling	100% complete
Piling foundations	100% complete
Retaining walls, concrete beam foundations	100% complete
Basement slab construction	100% complete
Ground floor slab construction	100% complete
Concrete deck floor construction to upper floors	100% complete
Lift and staircase core concrete structure	100% complete
Concrete frame structure	100% complete
Internal staircase structure	100% complete
Sub-structure masonry walls	30% complete
Structural framework forming external walls	97% complete
Scaffolding & mast climber access	100% complete
Flat roof covering including balconies	55% complete
Weatherboarding	97% complete
External windows / doors & curtain walling	97% complete
External wall cladding and insulation	42% complete

Sub-Structure & Super-Structure Progress

August 2023



Block D Section B – Viewed from Parliament Street



Block D Section B – Viewed from Parliament Street

Sub-Structure & Super-Structure Progress

August 2023



Block D Section B – Viewed from Parliament Street



Block D Section B – Viewed from Parliament Street

Sub-Structure & Super-Structure Progress

August 2023



Block D Section B – Viewed from Parliament Street



Block D Section B – Viewed from Parliament Street

Sub-Structure & Super-Structure Progress

August 2023



Block D Section B, C & A – Viewed from Crump Street



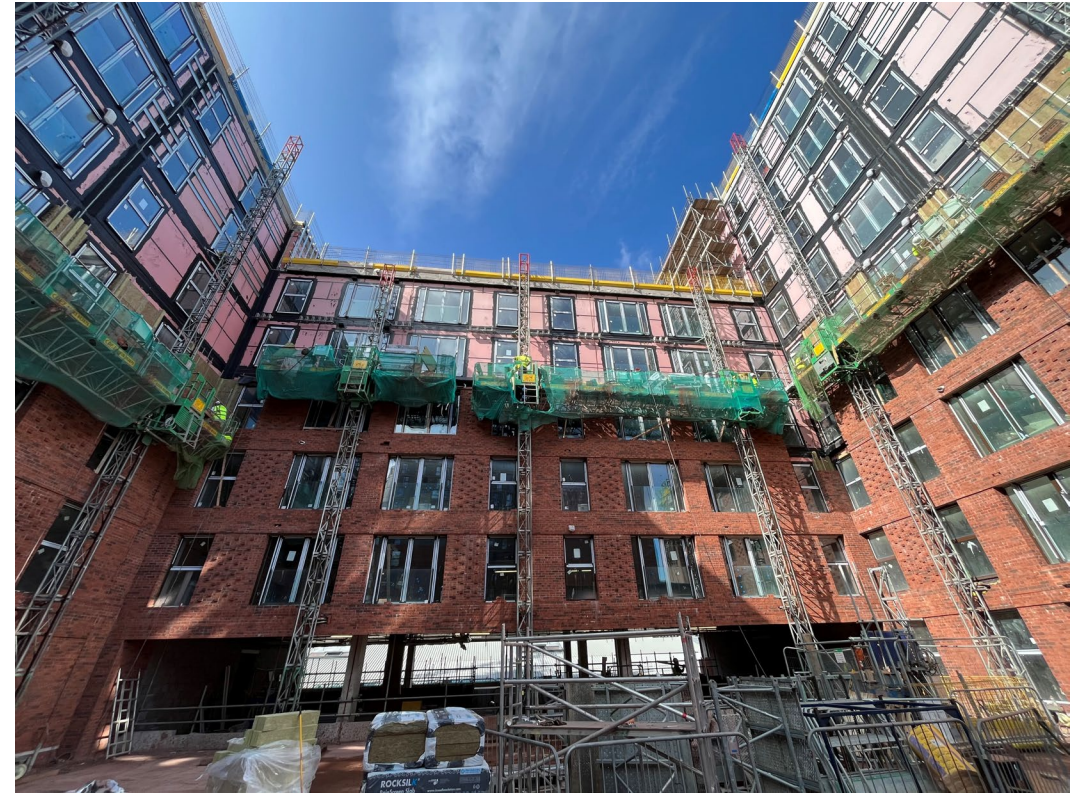
Block D Section C – Viewed from Crump Street

Sub-Structure & Super-Structure Progress

August 2023



Block D Section B – Mast climbers



Block D Section A – Mast climbers

Sub-Structure & Super-Structure Progress

August 2023



Block D Section A – External insulation and brickwork installation



Block D Section A – External insulation and brickwork installation

Sub-Structure & Super-Structure Progress

August 2023



Block D Section A – Viewed from Greenland Street



Block D Section A – Masonry supports and external brickwork ongoing

Sub-Structure & Super-Structure Progress

August 2023



Block D Section A, C & B – Viewed from Greenland Street



Block D Section A and C – External insulation and brickwork installation

Sub-Structure & Super-Structure Progress

August 2023



Block D Section A – External brickwork and insulation installation



Block D Section A – External brickwork and insulation installation

Internal Fit-out Block 'D'

Parliament Square, Liverpool
New Build Development

Internal Fit-out Progress

August 2023

Core drilling for services	0% complete
Riser installation	0% complete
Lift installation	0% complete
Above ground drainage	90% complete
Partition walls installation	88% complete
Apartment ceiling installation	81% complete
Plaster finishes walls and ceilings	78% complete
1st fix electrical	82% complete
1st fix plumbing and heating	92% complete
Kitchen units and appliances	6% complete
Doorframes	31% complete
Skirting and architrave	28% complete
Bathroom sanitary fittings	45% complete
Wall and floor tiling	53% complete
Carpet and floor finishes	12% complete
Doors and ironmongery	12% complete
Decorations	16% complete
Second fix electrical	15% complete
Second fix plumbing and heating	25% complete
General fixtures and fittings	0% complete

Internal Fit-out Progress

August 2023



Intercom installation ongoing



2nd fix mechanical installation ongoing

Internal Fit-out Progress

August 2023



[Show Apartment](#)



[Show Apartment](#)

Internal Fit-out Progress

August 2023



[Show Apartment](#)



[Show Apartment](#)

Internal Fit-out Progress

August 2023



Show Apartment



Show Apartment

Internal Fit-out Progress

August 2023



Show Apartment



Show Apartment

Internal Fit-out Progress

August 2023



[Show Apartment](#)



[Show Apartment](#)

Internal Fit-out Progress

August 2023



Installation of kitchen appliances ongoing



Installation of kitchen appliances ongoing

Internal Fit-out Progress

August 2023



Installation of kitchen units and worktops ongoing



Installation of kitchen units and appliances ongoing

Internal Fit-out Progress

August 2023



[Show Apartment](#)



[Show Apartment](#)

Internal Fit-out Progress

August 2023



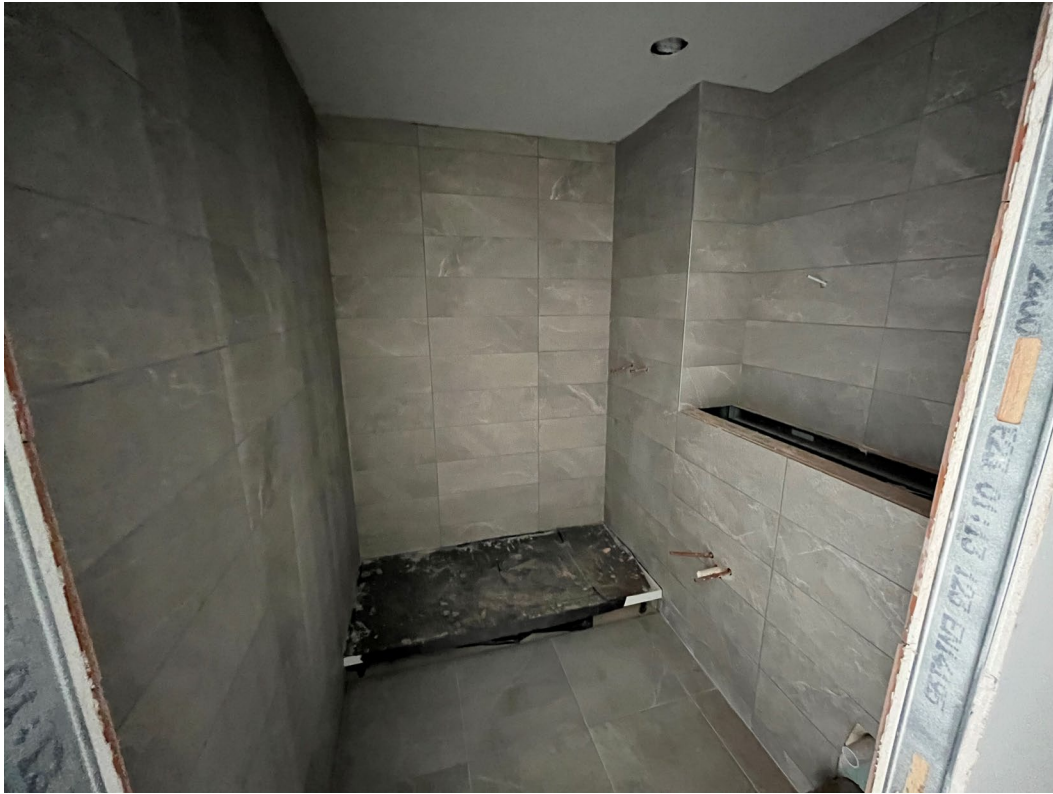
Sanitaryware installation ongoing



Sanitaryware installation ongoing

Internal Fit-out Progress

August 2023



Wall and floor tile installation ongoing



Wall and floor tile installation ongoing

Internal Fit-out Progress

August 2023



Partness installation and formation IPS ongoing



2nd side boarding of IPS ongoing

Internal Fit-out Progress

August 2023



Internal joinery and doors installation ongoing



Timber skirting board installation ongoing

Internal Fit-out Progress

August 2023



Self-levelling screed application ongoing



Laminate flooring installation and protection ongoing

Internal Fit-out Progress

August 2023



Internal finishes ongoing



Internal finishes ongoing

Internal Fit-out Progress

August 2023



Internal finishes ongoing



Internal finishes ongoing

Internal Fit-out Progress

August 2023



Walls and ceiling mistcoat application



Walls and ceiling mistcoat application

Internal Fit-out Progress

August 2023



Plaster skim walls and ceiling application ongoing



Plaster skim walls and ceiling application ongoing

Internal Fit-out Progress

August 2023



Plaster skim walls and ceiling application ongoing



Plaster skim walls and ceiling application ongoing

Internal Fit-out Progress

August 2023



2nd side boarding of walls ongoing



2nd side boarding of ceilings ongoing

Internal Fit-out Progress

August 2023



1st side boarding of walls and insulation installation ongoing



Pattress installation ongoing

Internal Fit-out Progress

August 2023



1st side boarding of walls and pattress installation ongoing



2nd side boarding of walls and internal joinery ongoing

Internal Fit-out Progress

August 2023



1st fix electrical installation ongoing



Metal ceiling grid installation ongoing

Internal Fit-out Progress

August 2023



Hot water tank on site



Ceramic tile adhesive on site

Internal Fit-out Progress

August 2023



Internal doors on site



Door frames and laminate flooring on site

Internal Fit-out Progress

August 2023



Cavity wall insulation on site



Kitchen appliances on site

Internal Fit-out Progress

August 2023



Internal partition insulation on site



Kitchen units on site

TO FIND OUT MORE ABOUT

Parliament Square, Liverpool

PLEASE CONTACT

legacie

WWW.LEGACIE.CO.UK

By Appointment Only
Unit 4 Connect Business Village
Liverpool, L5 9PR
+44 (0) 151 207 9990