

legacie



Parliament Square Block 'B' Investors Report

IR27 December 2022

Parliament Square – Phase 1 Block B

97 Luxury Apartments



Land at corner of Upper Parliament Street & Great St George Street, Liverpool L1

Schedule of Accommodation Block 'B'

Basement

- Car parking
- Sub-Station
- Plant

Ground Floor

- Retail units
- Refuse store
- Hard and soft landscaping

Floors 1 - 11

- 31 no. Studio Apartments
- 22no. 1 Bedroom Apartments
- 44 no. 2 Bedroom Apartments

New Build Two Phase Development to Create Residential Apartments Retail Units & Basement Parking



Land at corner of Upper Parliament Street & Great St George Street, Liverpool L1

The eleven storey new build development generally comprises:

- Demolition of adjoining structures and perimeter walls
- Site clearance and levelling
- Site investigations and trial holes
- Excavation and formation of new foundations
- Below and above ground drainage
- New ground supported and part suspended concrete floor slab
- Eighteen storey steel frame structure
- External clad and glazed envelope
- Suspended metal deck and concrete floors
- Flat roof structures and finishes
- Aluminium curtain walling, external windows and doors and shopfronts
- External balconies and balustrades
- Internal sub-division of retail units and apartments with non-loadbearing block and stud partitions
- Installation of plumbing services and mechanical services
- Installation of electrical services
- Installation of new lift car access
- Installation of kitchen and sanitary fittings
- New internal finishes, joinery fittings and decorations

Building Structure

Parliament Square, Liverpool
New Build Development

Sub-Structure & Super-Structure Progress

DECEMBER 2022

Floor slab construction	100% complete
Steel frame structure	100% complete
Upper suspended steel floor structure	100% complete
Concrete pour upper suspended floor structure	100% complete
Internal staircase structure	100% complete
Sub-structure Masonry wall	100% complete
Fire coating steel framework	100% complete
Structural framework forming external walls	100% complete
Flat roof structure and covering	100% complete
Podium steel structure	100% complete
Podium concrete poured	100% complete
Mast climber installation	100% complete
Weatherboarding	100% complete
Brickwork to elevations	98% complete
Cladding installation	98% complete
Window installation	100% complete

Sub-Structure & Super-Structure Progress

DECEMBER 2022



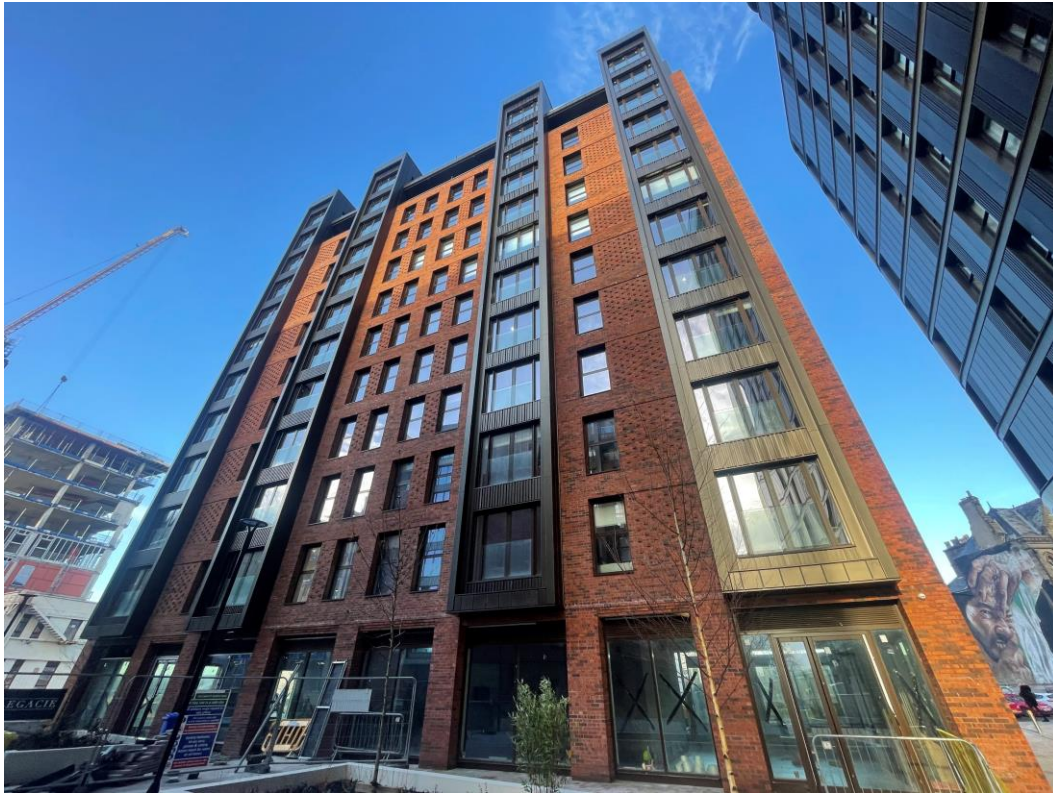
Block B – Viewed from site compound



Block B - Curtain wall

Sub-Structure & Super-Structure Progress

DECEMBER 2022



Block B – Viewed from site compound



Cladding installation nearing completion

Sub-Structure & Super-Structure Progress

DECEMBER 2022



Cladding installation nearing completion



Curtain wall installation nearing completion

Sub-Structure & Super-Structure Progress

DECEMBER 2022



Cladding installation nearing completion



Cladding installation nearing completion

Sub-Structure & Super-Structure Progress

DECEMBER 2022



Balcony dividers installed



Balcony balustrades installed

External Works

Parliament Square, Liverpool
New Build Development

Sub-Structure & Super-Structure Progress

DECEMBER 2022



Retaining wall formed



Retaining wall formed

Sub-Structure & Super-Structure Progress

DECEMBER 2022



Step formwork



Retaining wall formed

Sub-Structure & Super-Structure Progress

DECEMBER 2022



Formwork in place for casting of steps



Planter construction complete

Sub-Structure & Super-Structure Progress

DECEMBER 2022



Paving flags installed



Render applied to planter boxes

Sub-Structure & Super-Structure Progress

DECEMBER 2022



Copping stones installed



Footings poured for wall construction

Sub-Structure & Super-Structure Progress

DECEMBER 2022



Blockwork installed to main entrance



Formation for podium access ongoing

Internal Fit-out Block 'B'

Parliament Square, Liverpool
New Build Development

Internal Fit-out Construction Progress

DECEMBER 2022

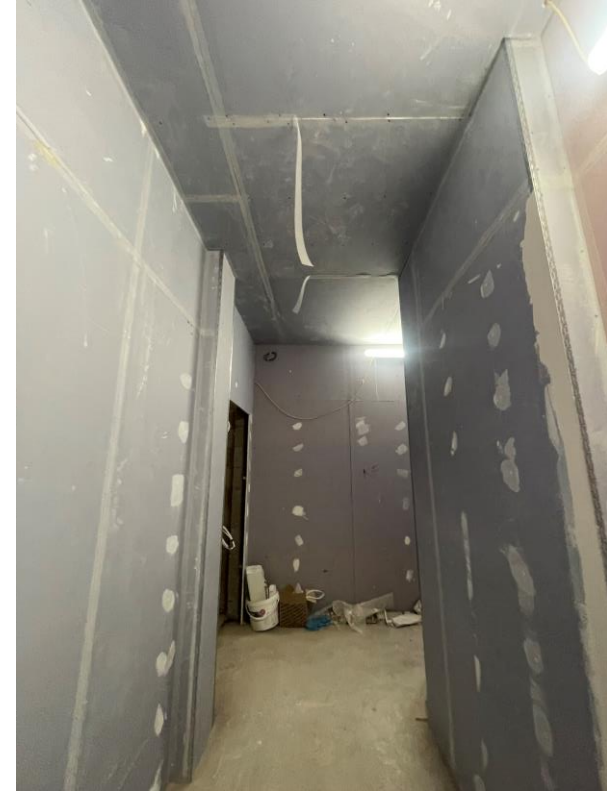
Core drilling for services	100% complete
Riser installation	100% complete
Lift installation	100% complete
Above ground drainage	100% complete
Partition walls installation	100% complete
Apartment ceiling installation	100% complete
Plaster finishes walls and ceilings	100% complete
1st fix electrical	100% complete
1st fix plumbing and heating	100% complete
Kitchen units and appliances	100% complete
Doorframes	100% complete
Skirting and architrave	100% complete
Bathroom sanitary fittings	100% complete
Wall and floor tiling	100% complete
Carpet and floor finishes	100% complete
Doors and ironmongery	100% complete
Decorations	100% complete
2 nd fix electrical	100% complete
2 nd fix plumbing and heating	100% complete
General fixtures and fittings	92% complete

Internal Fit-out Construction Progress

DECEMBER 2022



Boarding to lift lobby walls & ceilings



Boarding to lift lobby walls & ceilings

Internal Fit-out Construction Progress

DECEMBER 2022



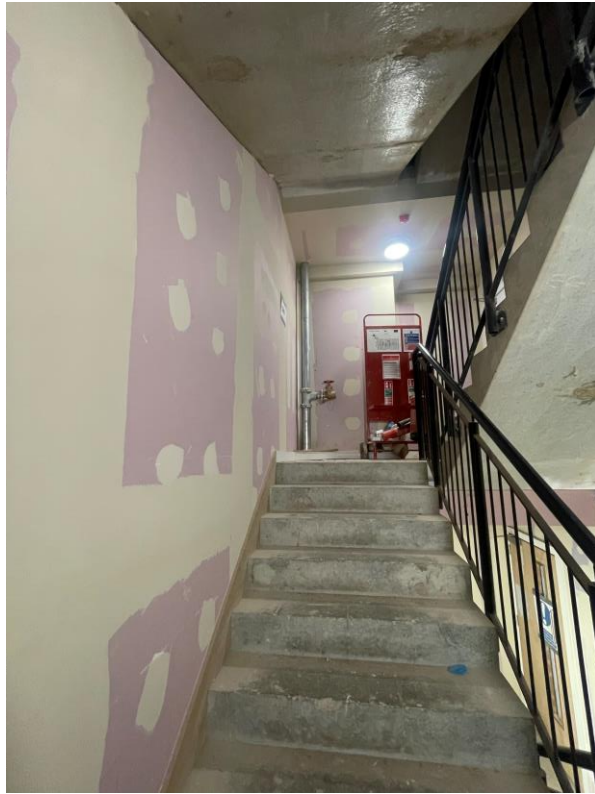
Tape & jointing ongoing



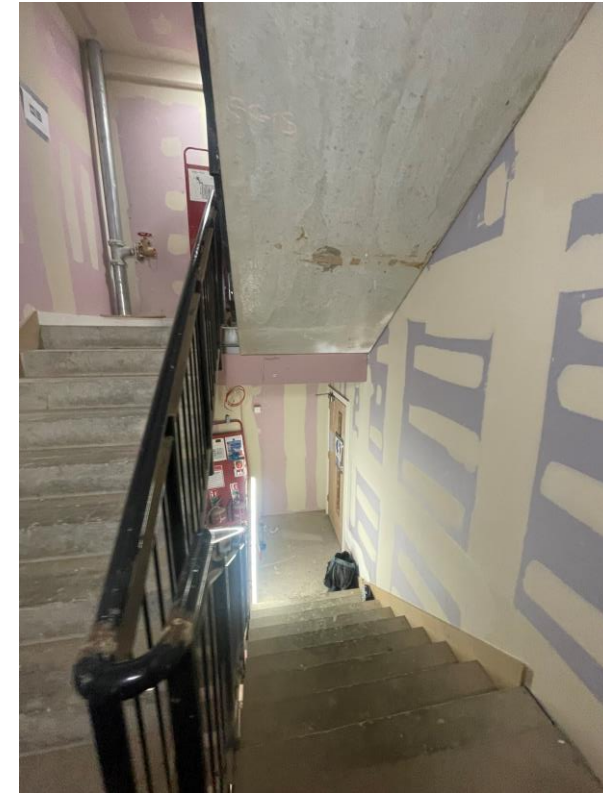
Tape & jointing ongoing

Internal Fit-out Construction Progress

DECEMBER 2022



Tape & jointing to stairwell walls & ceilings



Tape & jointing to stairwell walls & ceilings

Internal Fit-out Construction Progress

DECEMBER 2022



Stairwell finishes



Stairwell finishes

Internal Fit-out Construction Progress

DECEMBER 2022



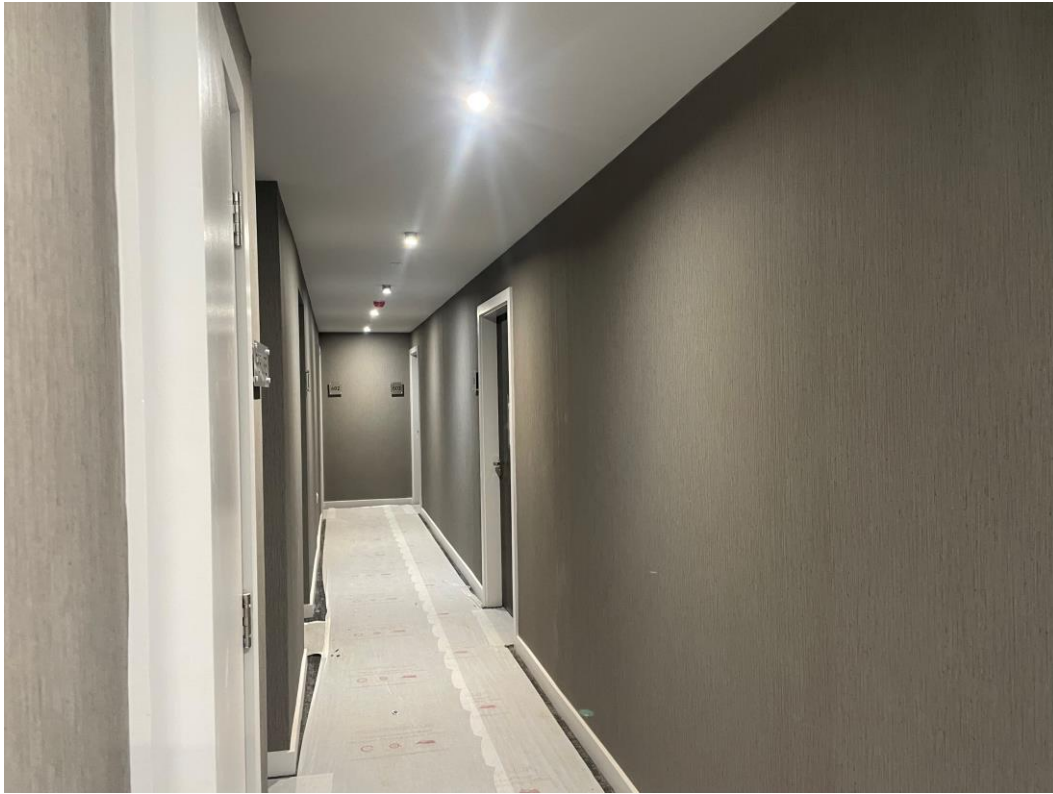
Signage installed



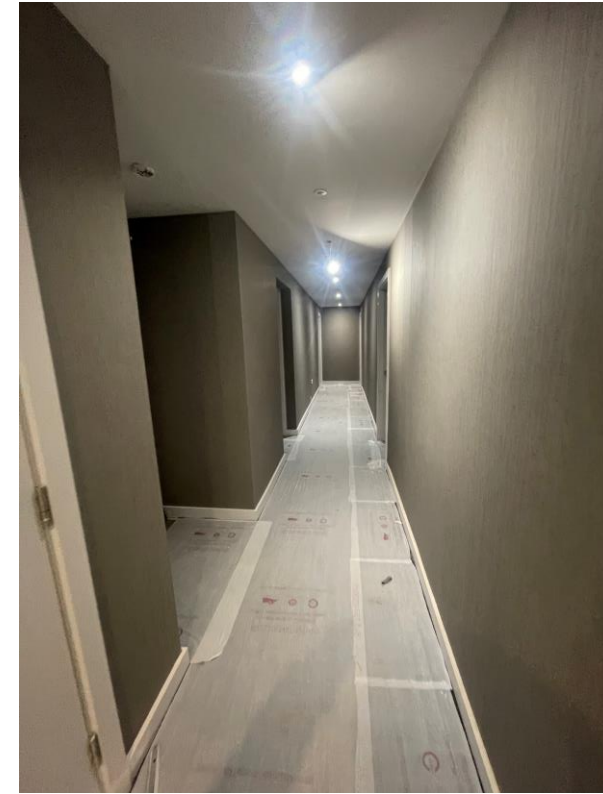
Signage installed

Internal Fit-out Construction Progress

DECEMBER 2022



Wall coverings installed to circulation area



Wall coverings installed to circulation area

Internal Fit-out Construction Progress

DECEMBER 2022



Wall coverings installed to lift lobby



Tiled flooring to lift lobby

Internal Fit-out Construction Progress

DECEMBER 2022



Underlay installed to bedroom in preparation for laying of carpets



Panel heater

Internal Fit-out Construction Progress

DECEMBER 2022



Wall coverings installed to bedroom



Wall coverings installed to lounge

Internal Fit-out Construction Progress

DECEMBER 2022



Decoration works complete to level 11 apartments



Kitchen installed

Internal Fit-out Construction Progress

DECEMBER 2022



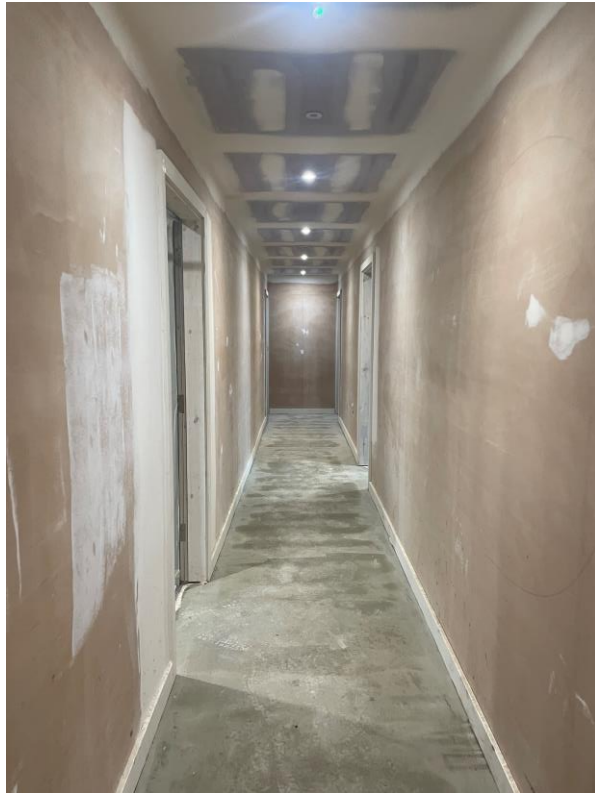
Sanitary appliances installed



Sanitary appliances installed

Internal Fit-out Construction Progress

DECEMBER 2022



Screed applied to corridors



Screed applied to corridors

Internal Fit-out Construction Progress

DECEMBER 2022



TV's installed



Electric hob installed

TO FIND OUT MORE ABOUT

Parliament Square, Liverpool

PLEASE CONTACT

legacie

WWW.LEGACIE.CO.UK

By Appointment Only
Unit 4 Connect Business Village
Liverpool, L5 9PR
+44 (0) 151 207 9990