

legacie



Parliament Square Block 'D' Investors Report

IR26 JULY 2023

Parliament Square – Phase 1 Block D

97 Luxury Apartments



Land at corner of Upper Parliament Street & Great St George Street, Liverpool L1

Schedule of Accommodation Block 'D'

Basement

- Car parking
- Sub-Station
- Plant

Ground Floor

- Retail units
- Refuse store
- Hard and soft landscaping

Floors 1 - 11

- 31 no. Studio Apartments
- 22no. 1 Bedroom Apartments
- 44 no. 2 Bedroom Apartments

New Build Two Phase Development to Create Residential Apartments Retail Units & Basement Parking

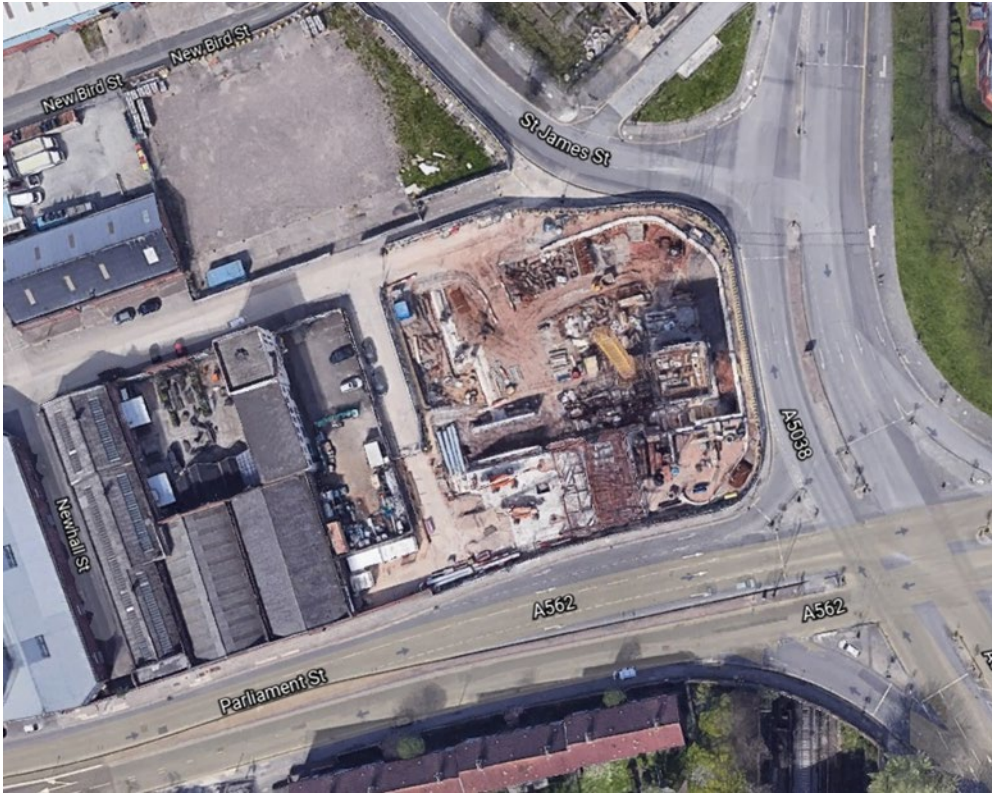


Land at corner of Upper Parliament Street & Great St George Street, Liverpool L1

The eleven storey new build development generally comprises:

- Demolition of adjoining structures and perimeter walls
- Site clearance and levelling
- Site investigations and trial holes
- Excavation and formation of new foundations
- Below and above ground drainage
- New ground supported and part suspended concrete floor slab
- Eighteen storey steel frame structure
- External clad and glazed envelope
- Suspended metal deck and concrete floors
- Flat roof structures and finishes
- Aluminium curtain walling, external windows and doors and shopfronts
- External balconies and balustrades
- Internal sub-division of retail units and apartments with non-loadbearing block and stud partitions
- Installation of plumbing services and mechanical services
- Installation of electrical services
- Installation of new lift car access
- Installation of kitchen and sanitary fittings
- New internal finishes, joinery fittings and decorations

Site Location



Aerial View of the site prior to demolition



Aerial view of the site location of Parliament Square

Building Structure

Parliament Square, Liverpool
New Build Development

Sub-Structure & Super-Structure Progress

JULY 2023

Site investigations	100% complete
Site compound and temporary supplies	100% complete
Demolition and site clearance	100% complete
Ground infill and site levelling	100% complete
Piling foundations	100% complete
Retaining walls, concrete beam foundations	100% complete
Basement slab construction	100% complete
Ground floor slab construction	100% complete
Concrete deck floor construction to upper floors	100% complete
Lift and staircase core concrete structure	100% complete
Concrete frame structure	100% complete
Internal staircase structure	100% complete
Sub-structure masonry walls	20% complete
Structural framework forming external walls	97% complete
Scaffolding & mast climber access	100% complete
Flat roof covering including balconies	17% complete
Weatherboarding	97% complete
External windows / doors & curtain walling	97% complete
External wall cladding and insulation	10% complete

Sub-Structure & Super-Structure Progress

JULY 2023



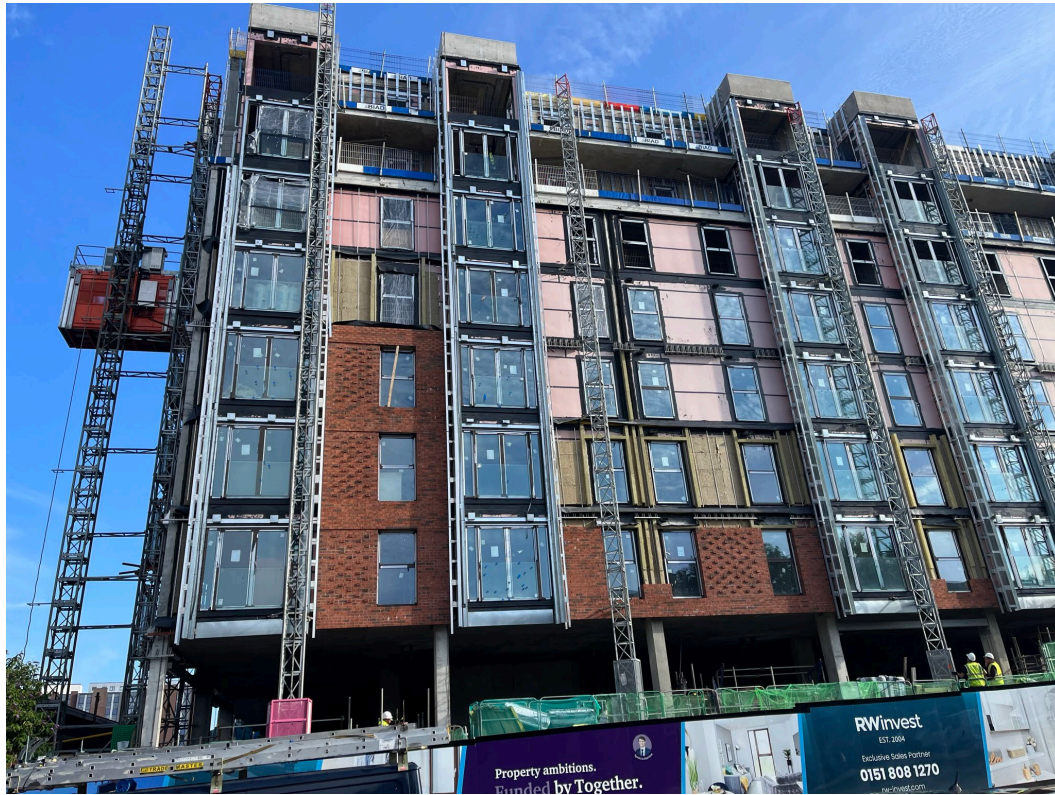
Block D Section B – Viewed from Parliament Street



Block D Section B – Viewed from Parliament Street

Sub-Structure & Super-Structure Progress

JULY 2023



Block D Section B – Viewed from Parliament Street



Block D Section B – Viewed from Parliament Street

Sub-Structure & Super-Structure Progress

JULY 2023



Block D Section C – Viewed from Crump Street



Block D Section C – Viewed from Crump Street

Sub-Structure & Super-Structure Progress

JULY 2023



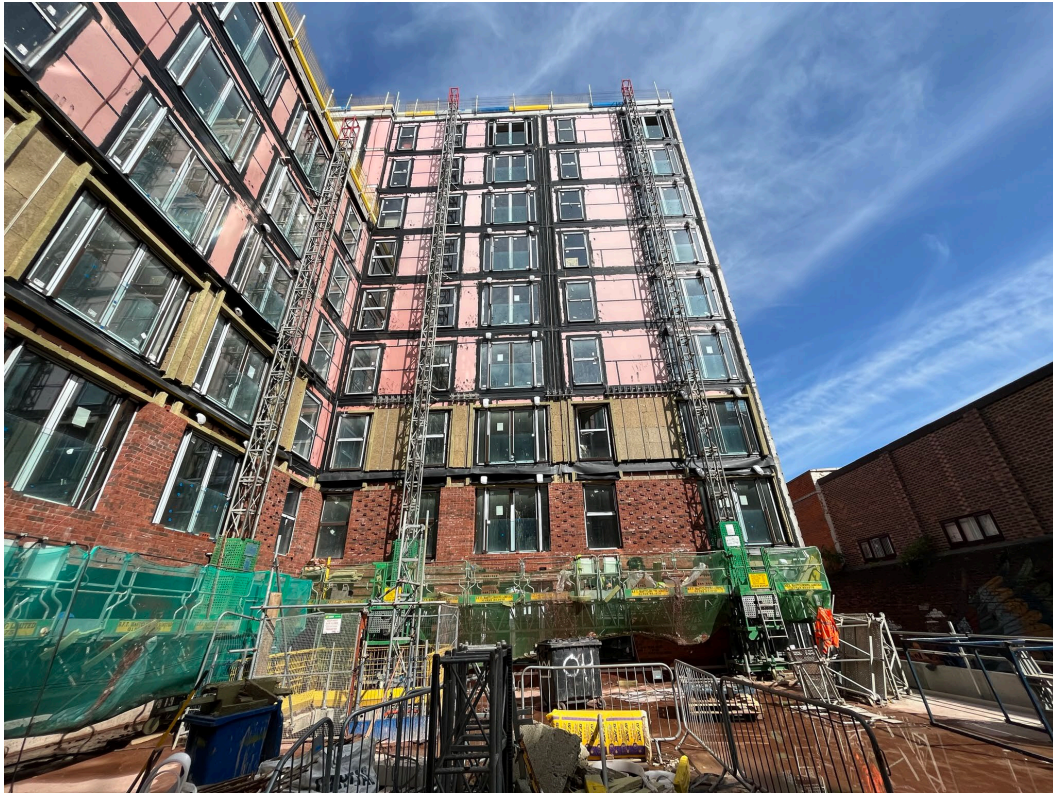
Block D Section C – Mast climbers



Block D Section A – Mast climbers

Sub-Structure & Super-Structure Progress

JULY 2023



Block D Section A – SFS, Weatherboarding & brickwork installation



Block D Section B – SFS, weatherboarding & brickwork installation

Sub-Structure & Super-Structure Progress

JULY 2023



Block D Section A – Viewed from Greenland Street



Block D Section A – Masonry supports and external brickwork ongoing

Sub-Structure & Super-Structure Progress

JULY 2023



Block D Section A – Viewed from Greenland Street



Block D Section B – Cladding bracket installation commenced

Sub-Structure & Super-Structure Progress

JULY 2023



Block A – External brickwork and insulation installation



Block D – External brickwork and insulation installation

Sub-Structure & Super-Structure Progress

JULY 2023



External blockwork ongoing



Internal blockwork ongoing

Internal Fit-out Block 'D'

Parliament Square, Liverpool
New Build Development

Internal Fit-out Progress

JULY 2023

Core drilling for services	0% complete
Riser installation	0% complete
Lift installation	0% complete
Above ground drainage	90% complete
Partition walls installation	76% complete
Apartment ceiling installation	67% complete
Plaster finishes walls and ceilings	53% complete
1st fix electrical	70% complete
1st fix plumbing and heating	84% complete
Kitchen units and appliances	6% complete
Doorframes	29% complete
Skirting and architrave	17% complete
Bathroom sanitary fittings	28% complete
Wall and floor tiling	28% complete
Carpet and floor finishes	12% complete
Doors and ironmongery	11% complete
Decorations	9% complete
Second fix electrical	11% complete
Second fix plumbing and heating	15% complete
General fixtures and fittings	0% complete

Internal Fit-out Progress

JULY 2023



Installation of kitchen units ongoing



Installation of kitchen units and appliances ongoing

Internal Fit-out Progress

JULY 2023



Wall tile installation ongoing



Wall tile installation ongoing

Internal Fit-out Progress

JULY 2023



Sanitaryware installation ongoing



Sanitaryware installation ongoing

Internal Fit-out Progress

JULY 2023



Pan installation and IPS ongoing



2nd side boarding of IPS

Internal Fit-out Progress

JULY 2023



Internal joinery and doors installation ongoing



Timber skirting board installation ongoing

Internal Fit-out Progress

JULY 2023



Self-levelling screed application ongoing



Laminate flooring installation and protection ongoing

Internal Fit-out Progress

JULY 2023



Internal finishes ongoing



Internal finishes ongoing

Internal Fit-out Progress

JULY 2023



Internal finishes ongoing



Internal finishes ongoing

Internal Fit-out Progress

JULY 2023



Walls and ceiling mistcoat application



Walls and ceiling mistcoat application

Internal Fit-out Progress

JULY 2023



Plaster skim walls and ceiling application ongoing



Plaster skim walls and ceiling application ongoing

Internal Fit-out Progress

JULY 2023



Plaster skim walls and ceiling application ongoing



Plaster skim walls and ceiling application ongoing

Internal Fit-out Progress

JULY 2023



2nd side boarding of walls ongoing



2nd side boarding of ceilings ongoing

Internal Fit-out Progress

JULY 2023



1st side boarding of walls and pattress installation ongoing



Insulation and pattress installation ongoing

Internal Fit-out Progress

JULY 2023



Erection of metal partition walls ongoing



1st side boarding of walls and pattress installation ongoing

Internal Fit-out Progress

JULY 2023



1st fix mechanical ductwork installation ongoing



Metal ceiling grid installation ongoing

Internal Fit-out Progress

JULY 2023



Boiler onsite



Ceramic tile adhesive onsite

Internal Fit-out Progress

JULY 2023



Screed binder onsite



Laminate flooring onsite

Internal Fit-out Progress

JULY 2023



Kitchen appliances onsite



Kitchen appliances onsite

Internal Fit-out Progress

JULY 2023



Sink pedestal onsite



Shower tray onsite

TO FIND OUT MORE ABOUT

Parliament Square, Liverpool

PLEASE CONTACT

legacie

WWW.LEGACIE.CO.UK

By Appointment Only
Unit 4 Connect Business Village
Liverpool, L5 9PR
+44 (0) 151 207 9990