

legacie



Parliament Square Block 'D' Investors Report

IR25 JUNE 2023

Parliament Square – Phase 1 Block D

97 Luxury Apartments



Land at corner of Upper Parliament Street & Great St George Street, Liverpool L1

Schedule of Accommodation Block 'D'

Basement

- Car parking
- Sub-Station
- Plant

Ground Floor

- Retail units
- Refuse store
- Hard and soft landscaping

Floors 1 - 11

- 31 no. Studio Apartments
- 22no. 1 Bedroom Apartments
- 44 no. 2 Bedroom Apartments

New Build Two Phase Development to Create Residential Apartments Retail Units & Basement Parking

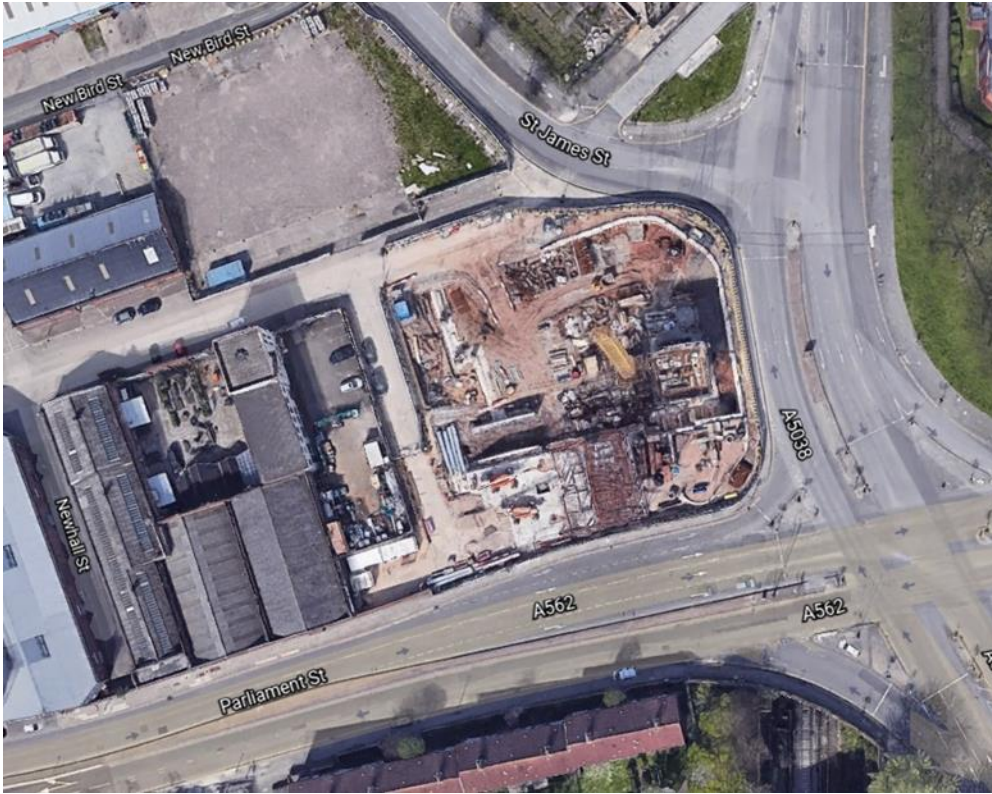


Land at corner of Upper Parliament Street & Great St George Street, Liverpool L1

The eleven storey new build development generally comprises:

- Demolition of adjoining structures and perimeter walls
- Site clearance and levelling
- Site investigations and trial holes
- Excavation and formation of new foundations
- Below and above ground drainage
- New ground supported and part suspended concrete floor slab
- Eighteen storey steel frame structure
- External clad and glazed envelope
- Suspended metal deck and concrete floors
- Flat roof structures and finishes
- Aluminium curtain walling, external windows and doors and shopfronts
- External balconies and balustrades
- Internal sub-division of retail units and apartments with non-loadbearing block and stud partitions
- Installation of plumbing services and mechanical services
- Installation of electrical services
- Installation of new lift car access
- Installation of kitchen and sanitary fittings
- New internal finishes, joinery fittings and decorations

Site Location



Aerial View of the site prior to demolition



Aerial view of the site location of Parliament Square

Building Structure

Parliament Square, Liverpool
New Build Development

Sub-Structure & Super-Structure Progress

JUNE 2023

Site investigations	100% complete
Site compound and temporary supplies	100% complete
Demolition and site clearance	100% complete
Ground infill and site levelling	100% complete
Piling foundations	100% complete
Retaining walls, concrete beam foundations	100% complete
Basement slab construction	100% complete
Ground floor slab construction	100% complete
Concrete deck floor construction to upper floors	100% complete
Lift and staircase core concrete structure	100% complete
Concrete frame structure	100% complete
Internal staircase structure	100% complete
Sub-structure masonry walls	20% complete
Structural framework forming external walls	97% complete
Scaffolding & mast climber access	100% complete
Flat roof covering including balconies	17% complete
Weatherboarding	97% complete
External windows / doors & curtain walling	97% complete
External wall cladding and insulation	0% complete

Sub-Structure & Super-Structure Progress

JUNE 2023



Block D Section B – Viewed from Parliament Street



Block D Section B – Viewed from Crump Street

Sub-Structure & Super-Structure Progress

JUNE 2023



Block D Section B – Viewed from Parliament Street



Block D Section B – Viewed from Parliament Street

Sub-Structure & Super-Structure Progress

JUNE 2023



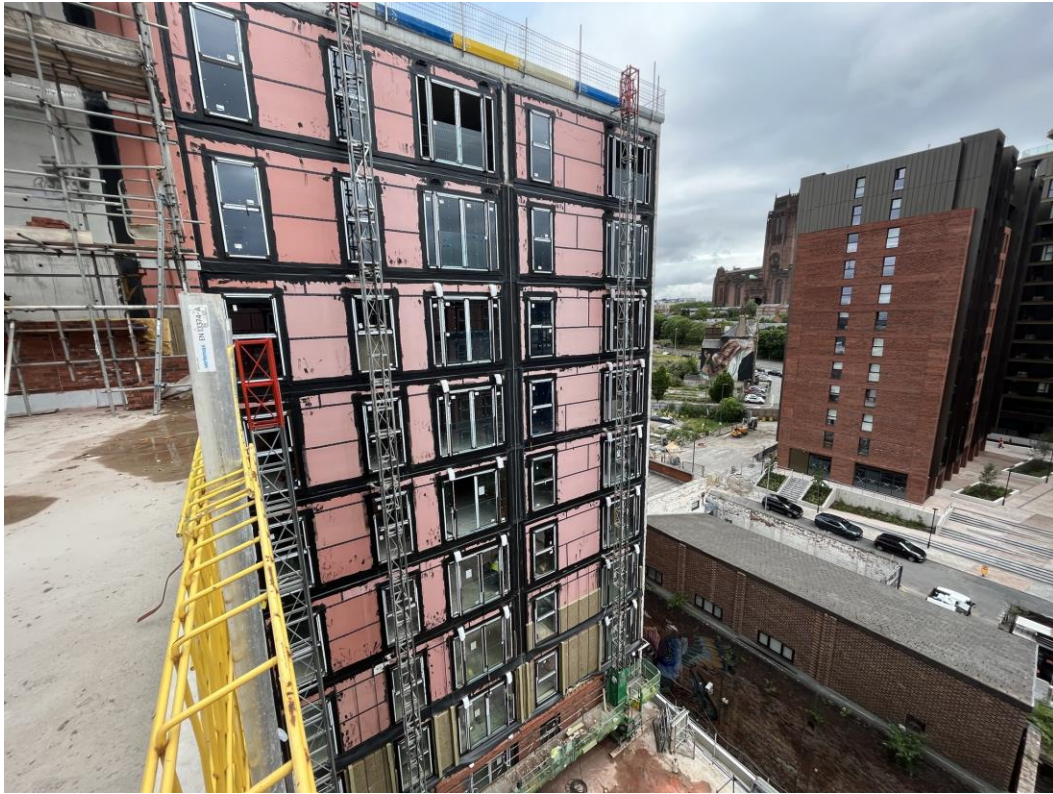
Block D Section B – Viewed from Crump Street



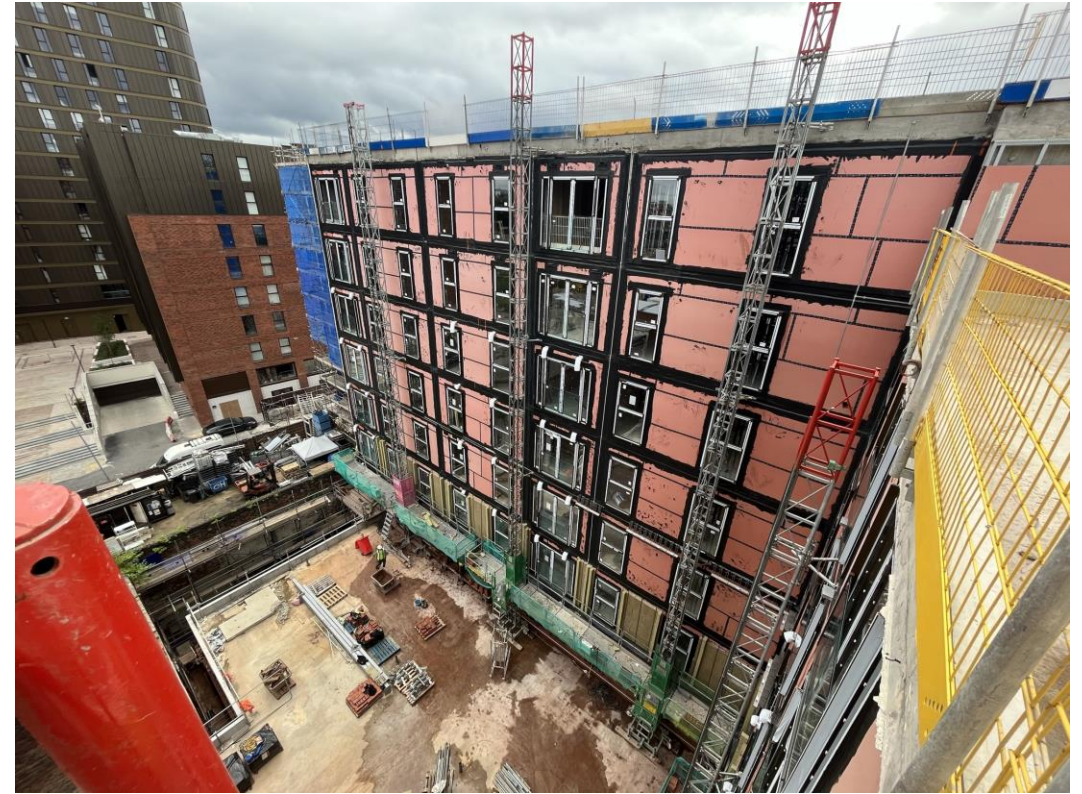
Block D Section C – Viewed from Crump Street

Sub-Structure & Super-Structure Progress

JUNE 2023



Block D Section A – SFS & Weatherboarding Installation



Block D Section B – SFS & Weatherboarding Installation

Sub-Structure & Super-Structure Progress

JUNE 2023



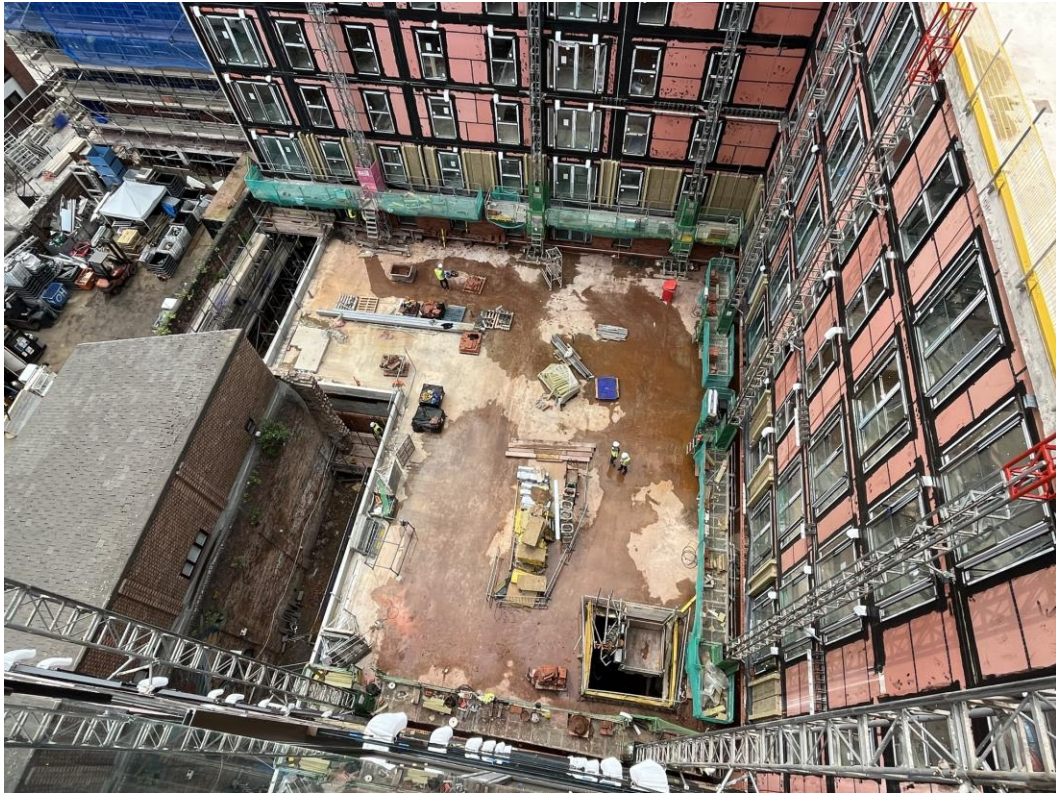
Block D Section A – Viewed from Greenland Street



Block D Section A – Masonry supports and external brickwork ongoing

Sub-Structure & Super-Structure Progress

JUNE 2023



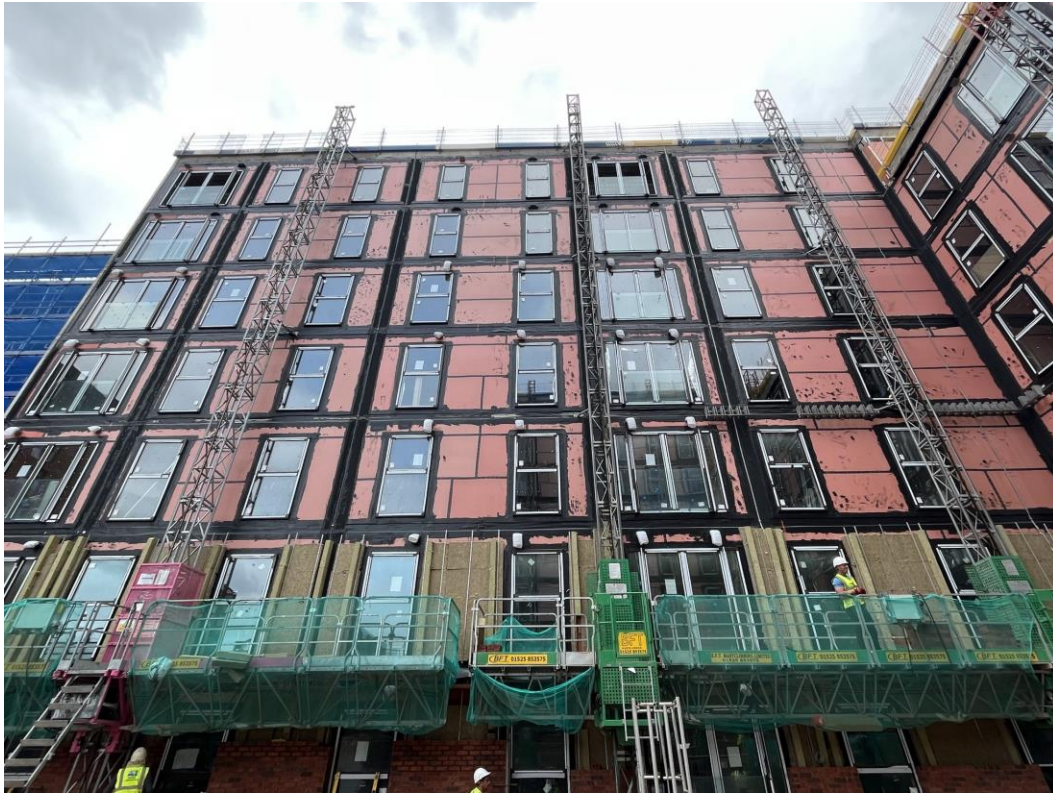
Block D Section C – Podium



Block D Section B – SFS & Weatherboarding Installation

Sub-Structure & Super-Structure Progress

JUNE 2023



Block D Section B – Mast climbers



Block D Section C – Mast climbers

Sub-Structure & Super-Structure Progress

JUNE 2023



Block D Section A – Mast climbers



Block D Section A – Mast climbers

Sub-Structure & Super-Structure Progress

JUNE 2023



Block D – SFS & Weatherboarding installation



Block D – Weatherboarding and waterproofing installation

Sub-Structure & Super-Structure Progress

JUNE 2023



External brickwork ongoing



External brickwork ongoing

Sub-Structure & Super-Structure Progress

JUNE 2023



External brickwork ongoing



External brickwork ongoing

Sub-Structure & Super-Structure Progress

JUNE 2023



Ground floor brickwork ongoing



Ground floor brickwork ongoing

Sub-Structure & Super-Structure Progress

JUNE 2023



Formation of substation roof ongoing



Formation of substation roof ongoing

Sub-Structure & Super-Structure Progress

JUNE 2023



Block D Section C – Roof



Block D Section B – Roof

Sub-Structure & Super-Structure Progress

JUNE 2023



Installation of lightning protection



Installation of lightning protection

Sub-Structure & Super-Structure Progress

JUNE 2023



Block D Section A – Installation of underground water mains



Block D Section A – Installation of underground water mains

Internal Fit-out Block 'D'

Parliament Square, Liverpool
New Build Development

Internal Fit-out Progress

JUNE 2023

Core drilling for services	0% complete
Riser installation	0% complete
Lift installation	0% complete
Above ground drainage	90% complete
Partition walls installation	32% complete
Apartment ceiling installation	46% complete
Plaster finishes walls and ceilings	32% complete
1st fix electrical	64% complete
1st fix plumbing and heating	76% complete
Kitchen units and appliances	6% complete
Doorframes	16% complete
Skirting and architrave	14% complete
Bathroom sanitary fittings	15% complete
Wall and floor tiling	7% complete
Carpet and floor finishes	6% complete
Doors and ironmongery	0% complete
Decorations	8% complete
Second fix electrical	0% complete
Second fix plumbing and heating	8% complete
General fixtures and fittings	0% complete

Internal Fit-out Progress

JUNE 2023



Installation of kitchen appliances ongoing



Installation of kitchen appliances ongoing

Internal Fit-out Progress

JUNE 2023



Installation of kitchen units ongoing



Installation of kitchen units and appliances ongoing

Internal Fit-out Progress

JUNE 2023



Pattress installation and IPS ongoing



2ND side boarding of IPS

Internal Fit-out Progress

JUNE 2023



Sanitaryware installation ongoing



Sanitaryware installation ongoing

Internal Fit-out Progress

JUNE 2023



Pattress installation and IPS ongoing



2nd side boarding of IPS

Internal Fit-out Progress

JUNE 2023



Self-levelling screed application ongoing



Timber flooring installation and protection ongoing

Internal Fit-out Progress

JUNE 2023



Internal joinery installation ongoing



Timber skirting board installation ongoing

Internal Fit-out Progress

JUNE 2023



Internal joinery and internal finishes ongoing



Internal finishes ongoing

Internal Fit-out Progress

JUNE 2023



Internal finishes ongoing



Internal finishes ongoing

Internal Fit-out Progress

JUNE 2023



Plaster skim walls and ceiling application ongoing



Walls and ceiling mistcoat application

Internal Fit-out Progress

JUNE 2023



Plaster skim walls and ceiling application ongoing



Mistcoat application ongoing

Internal Fit-out Progress

JUNE 2023



Plaster skim walls and ceiling application ongoing



Plaster skim walls and ceiling application ongoing

Internal Fit-out Progress

JUNE 2023



2nd side boarding of walls and ceiling ongoing



Plaster skim walls and ceiling application ongoing

Internal Fit-out Progress

JUNE 2023



Insulating of external walls ongoing



Insulating of external walls and 2nd side boarding ongoing

Internal Fit-out Progress

JUNE 2023



1st side boarding of walls and pattress installation ongoing



Insulation and pattress installation ongoing

Internal Fit-out Progress

JUNE 2023



Erection of metal partition walls ongoing



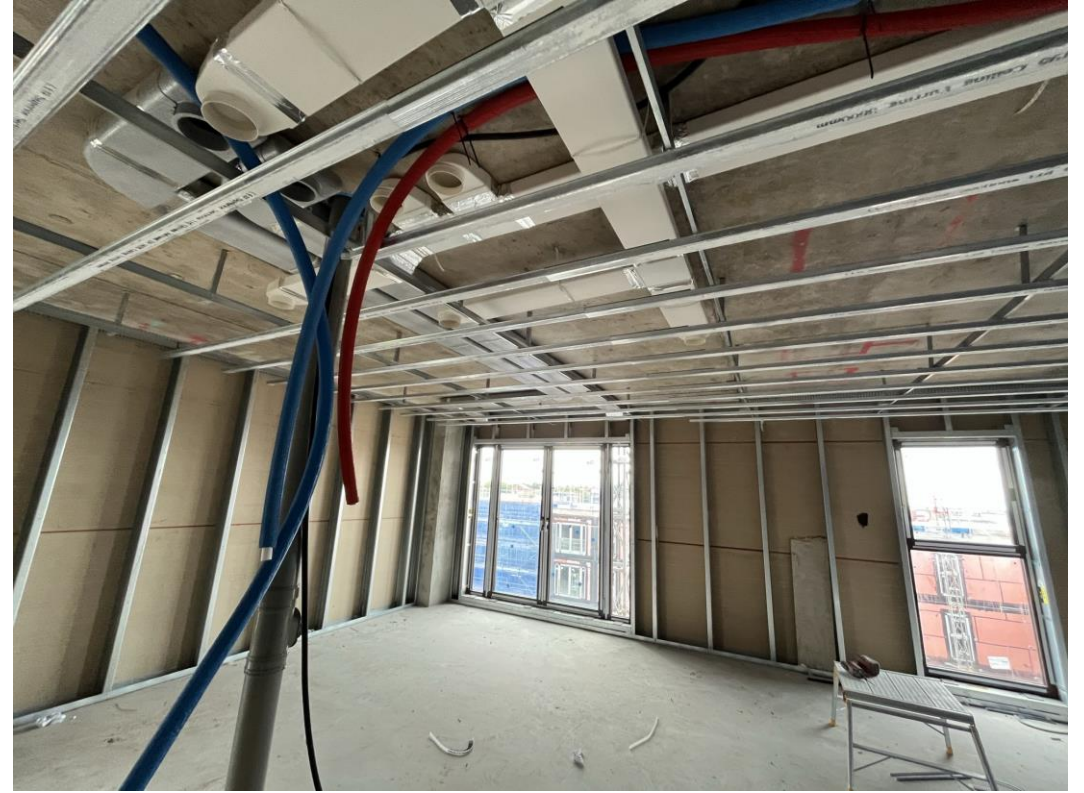
1st side boarding of walls and pattrness installation ongoing

Internal Fit-out Progress

JUNE 2023



1st fix mechanical ductwork installation ongoing



Metal ceiling grid installation ongoing

Internal Fit-out Progress

JUNE 2023



Materials: Metal partitions



Materials: Boiler

Internal Fit-out Progress

JUNE 2023



Materials: Screed binder



Materials: Self-levelling screed mix

Internal Fit-out Progress

JUNE 2023



Materials: Kitchen units



Materials: Timber flooring

Internal Fit-out Progress

JUNE 2023



Materials: Kitchen appliance



Materials: bath-tub

TO FIND OUT MORE ABOUT

Parliament Square, Liverpool

PLEASE CONTACT

legacie

WWW.LEGACIE.CO.UK

By Appointment Only
Unit 4 Connect Business Village
Liverpool, L5 9PR
+44 (0) 151 207 9990