

legacie



Parliament Square Block 'B' Investors Report

IR25 October 2022

Parliament Square – Phase 1 Block B

97 Luxury Apartments



Land at corner of Upper Parliament Street & Great St George Street, Liverpool L1

Schedule of Accommodation Block 'B'

Basement

- Car parking
- Sub-Station
- Plant

Ground Floor

- Retail units
- Refuse store
- Hard and soft landscaping

Floors 1 - 11

- 31 no. Studio Apartments
- 22no. 1 Bedroom Apartments
- 44 no. 2 Bedroom Apartments

New Build Two Phase Development to Create Residential Apartments Retail Units & Basement Parking



Land at corner of Upper Parliament Street & Great St George Street, Liverpool L1

The eleven storey new build development generally comprises:

- Demolition of adjoining structures and perimeter walls
- Site clearance and levelling
- Site investigations and trial holes
- Excavation and formation of new foundations
- Below and above ground drainage
- New ground supported and part suspended concrete floor slab
- Eighteen storey steel frame structure
- External clad and glazed envelope
- Suspended metal deck and concrete floors
- Flat roof structures and finishes
- Aluminium curtain walling, external windows and doors and shopfronts
- External balconies and balustrades
- Internal sub-division of retail units and apartments with non-loadbearing block and stud partitions
- Installation of plumbing services and mechanical services
- Installation of electrical services
- Installation of new lift car access
- Installation of kitchen and sanitary fittings
- New internal finishes, joinery fittings and decorations

Building Structure

Parliament Square, Liverpool
New Build Development

Sub-Structure & Super-Structure Progress

OCTOBER 2022

Floor slab construction	100% complete
Steel frame structure	100% complete
Upper suspended steel floor structure	100% complete
Concrete pour upper suspended floor structure	100% complete
Internal staircase structure	100% complete
Sub-structure Masonry wall	100% complete
Fire coating steel framework	100% complete
Structural framework forming external walls	100% complete
Flat roof structure and covering	100% complete
Podium steel structure	100% complete
Podium concrete poured	100% complete
Mast climber installation	100% complete
Weatherboarding	100% complete
Brickwork to elevations	98% complete
Cladding installation	98% complete
Window installation	98% complete

Sub-Structure & Super-Structure Progress

OCTOBER 2022



Block B – Viewed from New Bird Street



Block B – Viewed from Block D

Sub-Structure & Super-Structure Progress

OCTOBER 2022



Brickwork façade nearing completion



Brickwork façade nearing completion

Sub-Structure & Super-Structure Progress

OCTOBER 2022



Cladding installation nearing completion



Brickwork façade nearing completion

Sub-Structure & Super-Structure Progress

OCTOBER 2022



Block B – Viewed from podium



Brickwork façade nearing completion

Sub-Structure & Super-Structure Progress

OCTOBER 2022



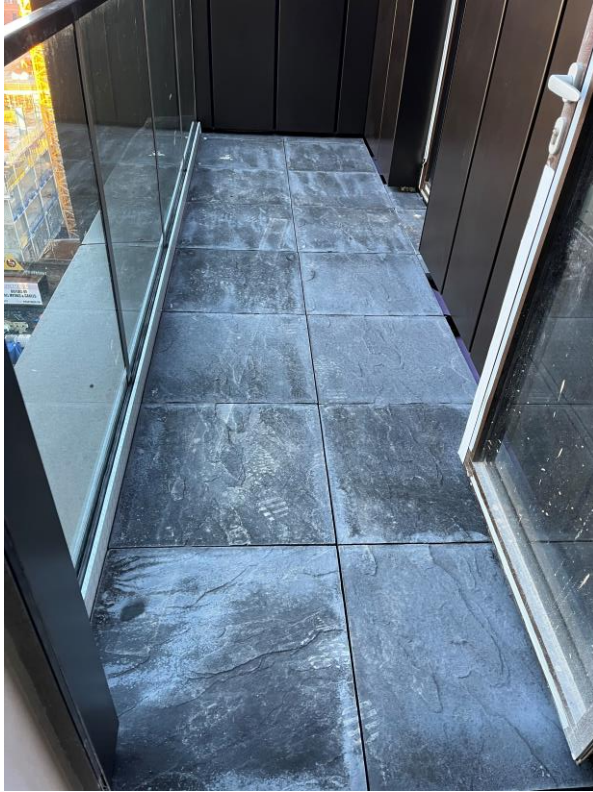
Cladding panels



External lights

Sub-Structure & Super-Structure Progress

OCTOBER 2022



Paving flags installed



Glazed balustrade installed

External Works

Parliament Square, Liverpool
New Build Development

Sub-Structure & Super-Structure Progress

OCTOBER 2022



Insulation installed for podium build up



Deck drain installed

Sub-Structure & Super-Structure Progress

OCTOBER 2022



Electrical junction box installed



Deck drain installed

Sub-Structure & Super-Structure Progress

OCTOBER 2022



Strip foundations poured for external staircase and ramp



Podium build up

Sub-Structure & Super-Structure Progress

OCTOBER 2022



Handrail installed



Bitumen Felt upstand from podium to Block B

Sub-Structure & Super-Structure Progress

OCTOBER 2022



Paving flags onsite for installation



External step formwork in place

Sub-Structure & Super-Structure Progress

OCTOBER 2022



Waterproof membrane in place to ramp to St George Street



Raised planter construction ongoing

Sub-Structure & Super-Structure Progress

OCTOBER 2022



Paving flag installation ongoing



Raised planter construction ongoing

Sub-Structure & Super-Structure Progress

OCTOBER 2022



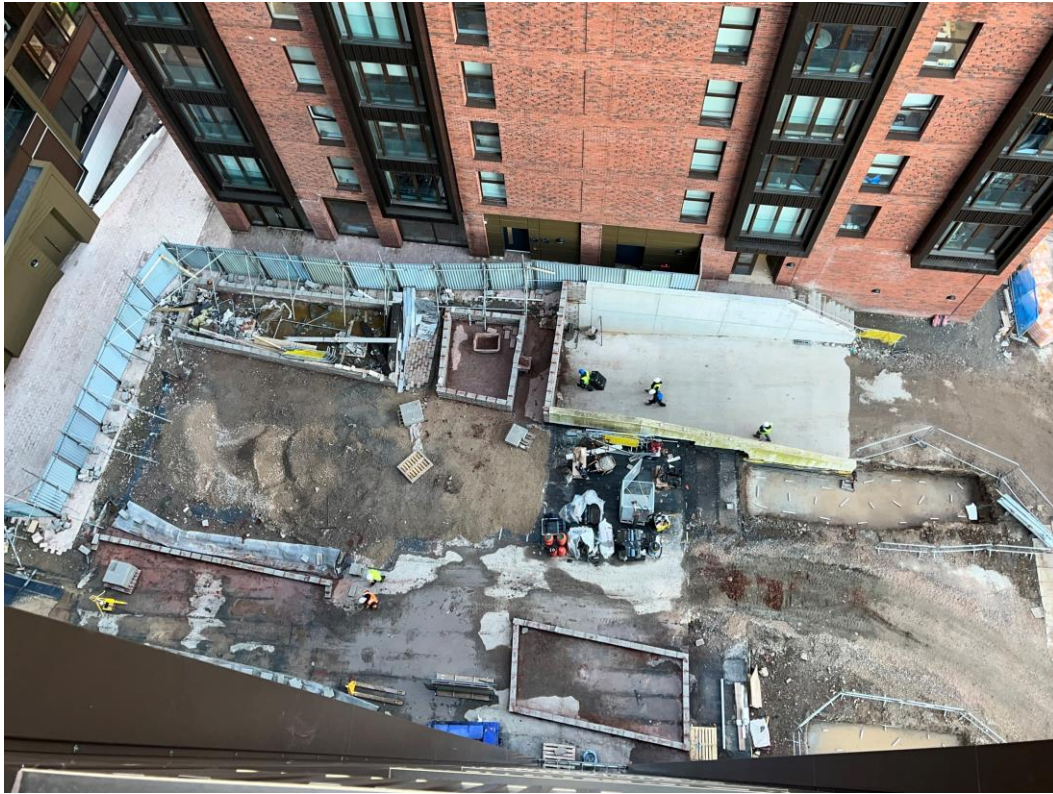
Deck drain installed



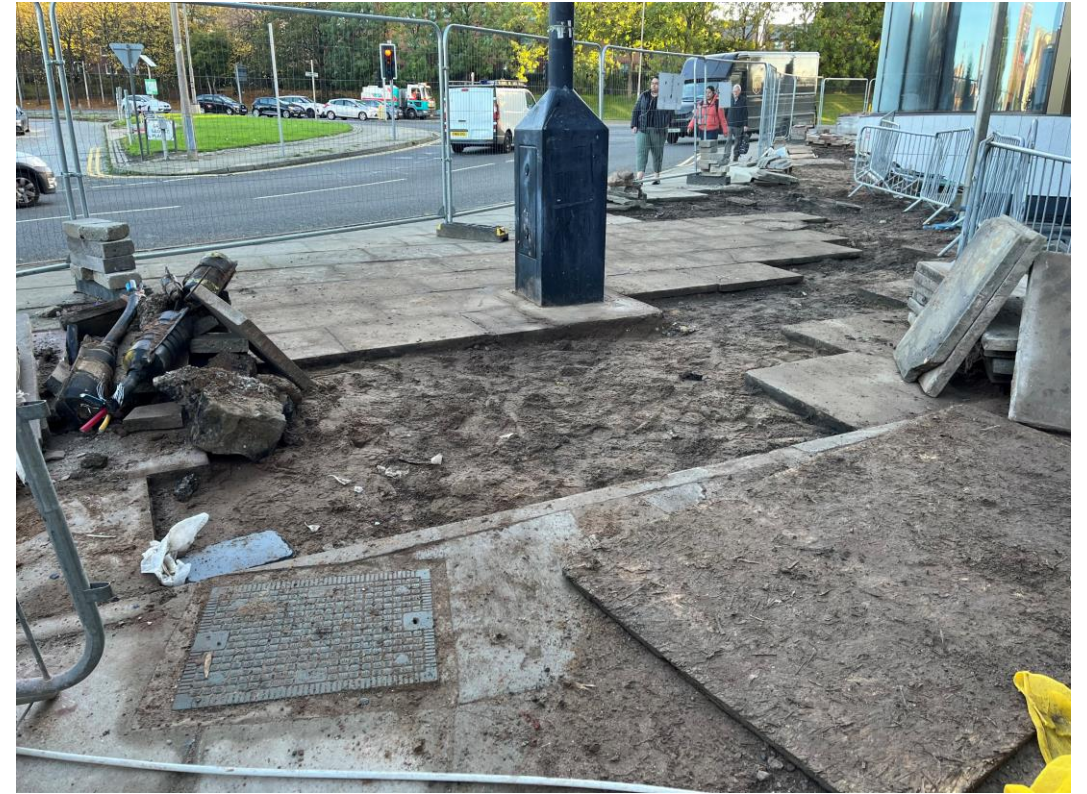
Raised planter construction ongoing

Sub-Structure & Super-Structure Progress

OCTOBER 2022



Podium works ongoing



Public access works ongoing

Sub-Structure & Super-Structure Progress

OCTOBER 2022



Basement access wall construction complete



Preparations ongoing for strip foundation concrete pour external staircase and ramp

Internal Fit-out Block 'B'

Parliament Square, Liverpool
New Build Development

Internal Fit-out Construction Progress

OCTOBER 2022

Core drilling for services	100% complete
Riser installation	100% complete
Lift installation	100% complete
Above ground drainage	100% complete
Partition walls installation	100% complete
Apartment ceiling installation	100% complete
Plaster finishes walls and ceilings	100% complete
1st fix electrical	100% complete
1st fix plumbing and heating	100% complete
Kitchen units and appliances	100% complete
Doorframes	100% complete
Skirting and architrave	100% complete
Bathroom sanitary fittings	100% complete
Wall and floor tiling	100% complete
Carpet and floor finishes	82% complete
Doors and ironmongery	100% complete
Decorations	78% complete
2 nd fix electrical	97% complete
2 nd fix plumbing and heating	97% complete
General fixtures and fittings	88% complete

Internal Fit-out Construction Progress

OCTOBER 2022



Commercial unit under construction



Curtain wall installed

Internal Fit-out Construction Progress

OCTOBER 2022



Curtain wall installation ongoing



Commercial unit water meter installed

Internal Fit-out Construction Progress

OCTOBER 2022



Bin Chute



Ground Floor lift area

Internal Fit-out Construction Progress

OCTOBER 2022



Tape & jointing commenced to stairwell areas



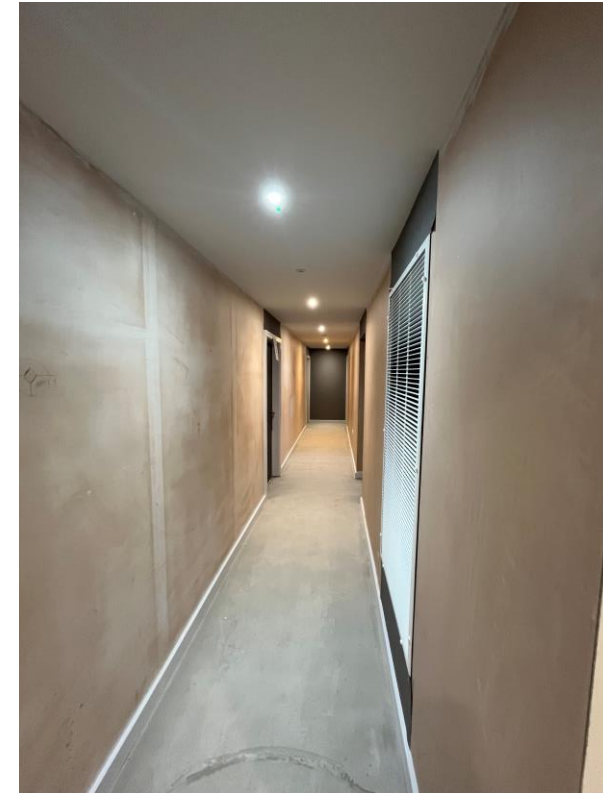
Tape & jointing commenced to stairwell areas

Internal Fit-out Construction Progress

OCTOBER 2022



Circulation area finishes



Circulation area finishes

Internal Fit-out Construction Progress

OCTOBER 2022



Electric meter cupboard door installed



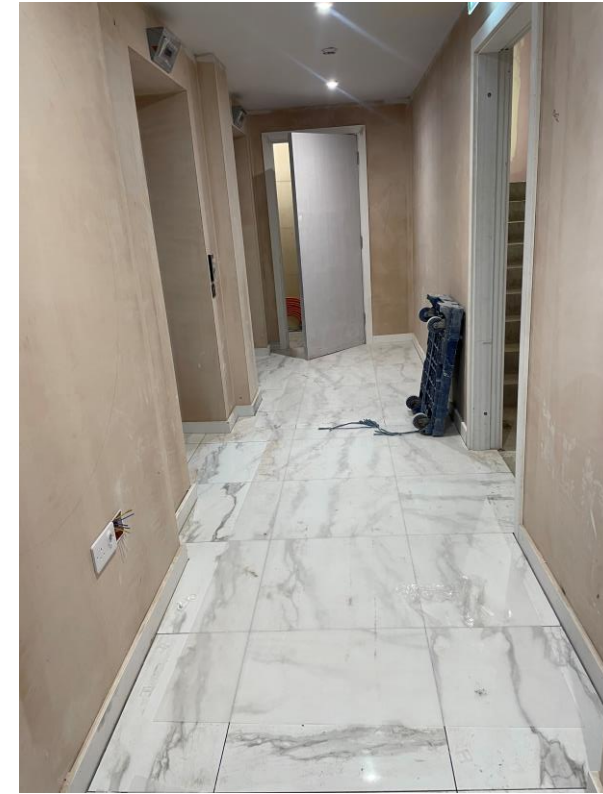
Circulation doors installed

Internal Fit-out Construction Progress

OCTOBER 2022



Lift area finishes



Lift area floors tiled

Internal Fit-out Construction Progress

OCTOBER 2022



Lift area floors tiled



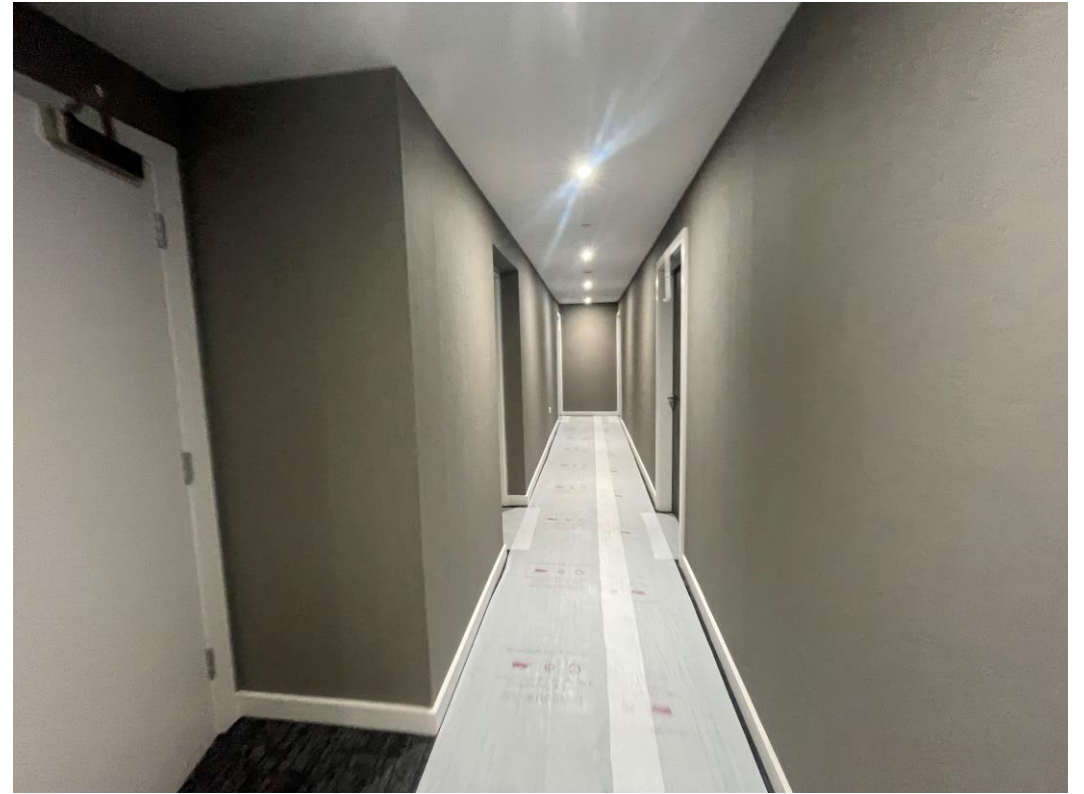
Corridor finishes

Internal Fit-out Construction Progress

OCTOBER 2022



2nd Fix joinery decoration



Wallpaper installed to circulation areas

Internal Fit-out Construction Progress

OCTOBER 2022



Wallpaper installed to circulation areas



Corridor carpets installed

Internal Fit-out Construction Progress

OCTOBER 2022



Bin chute installed



Lounge finishes

Internal Fit-out Construction Progress

OCTOBER 2022



Kitchen installed



Kitchen installed

Internal Fit-out Construction Progress

OCTOBER 2022



Kitchen installed



Doors & ironmongery installed

Internal Fit-out Construction Progress

OCTOBER 2022



Lounge finishes



2nd Fix joinery decoration ongoing

Internal Fit-out Construction Progress

OCTOBER 2022



Bedroom finishes



Carpets installed & protected

Internal Fit-out Construction Progress

OCTOBER 2022



Bedroom wallpaper installed



Carpets installed

Internal Fit-out Construction Progress

OCTOBER 2022



Bedroom finishes



Ensuite sanitary items

Internal Fit-out Construction Progress

OCTOBER 2022



Bathroom mirror



Ensuite sanitary items

Internal Fit-out Construction Progress

OCTOBER 2022



Towel radiator installed



Ensuite sanitary items

Internal Fit-out Construction Progress

OCTOBER 2022



Electric wall heater installed



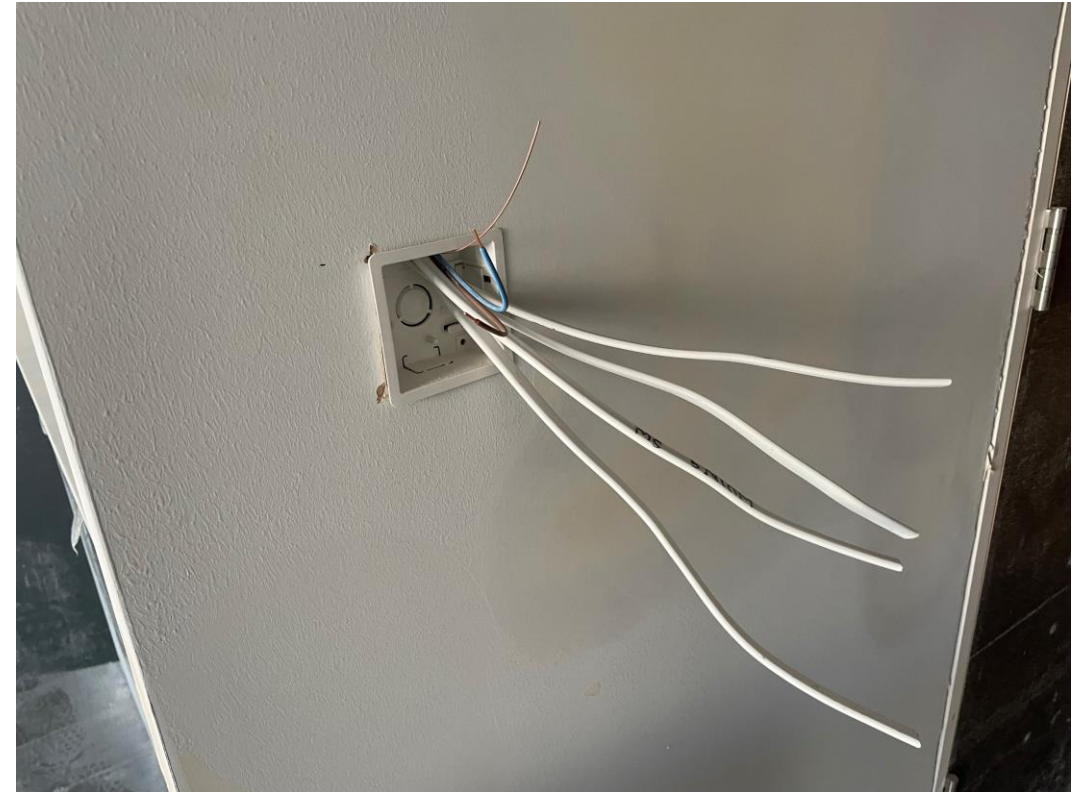
Intercom installed

Internal Fit-out Construction Progress

OCTOBER 2022



Consumer unit



Wiring of switch's & sockets ongoing

Internal Fit-out Construction Progress

OCTOBER 2022



Ventilation unit



Consumer unit

Internal Fit-out Construction Progress

OCTOBER 2022



Water cylinder installed



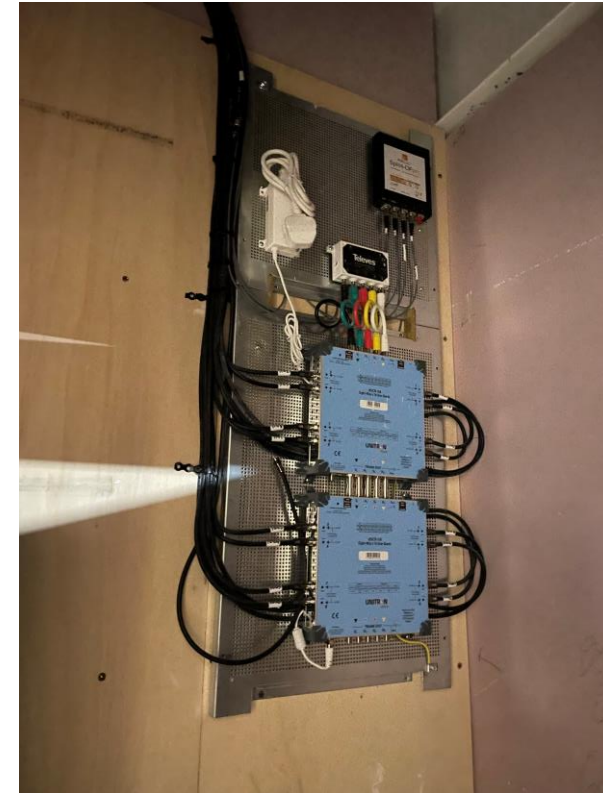
Water cylinder installed

Internal Fit-out Construction Progress

OCTOBER 2022



Electric meters installed



Telecoms board installed

Internal Fit-out Construction Progress

OCTOBER 2022



Blinds installed



Emergency exit signs installed

Internal Fit-out Construction Progress

OCTOBER 2022



Carpet tiles



CCTV Installed

TO FIND OUT MORE ABOUT

Parliament Square, Liverpool

PLEASE CONTACT

legacie

WWW.LEGACIE.CO.UK

By Appointment Only
Unit 4 Connect Business Village
Liverpool, L5 9PR
+44 (0) 151 207 9990