

legacie



Parliament Square Block 'D' Investors Report

IR24 May 2023

Parliament Square – Phase 1 Block D

97 Luxury Apartments



Land at corner of Upper Parliament Street & Great St George Street, Liverpool L1

Schedule of Accommodation Block 'D'

Basement

- Car parking
- Sub-Station
- Plant

Ground Floor

- Retail units
- Refuse store
- Hard and soft landscaping

Floors 1 - 11

- 31 no. Studio Apartments
- 22no. 1 Bedroom Apartments
- 44 no. 2 Bedroom Apartments

New Build Two Phase Development to Create Residential Apartments Retail Units & Basement Parking

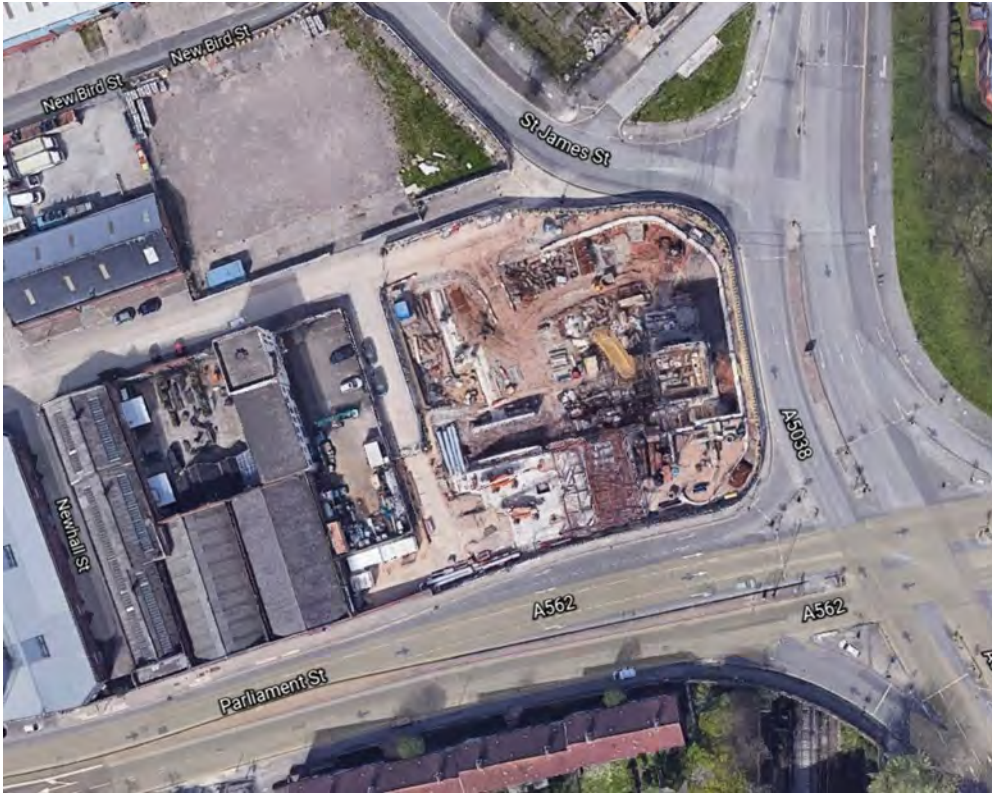


Land at corner of Upper Parliament Street & Great St George Street, Liverpool L1

The eleven storey new build development generally comprises:

- Demolition of adjoining structures and perimeter walls
- Site clearance and levelling
- Site investigations and trial holes
- Excavation and formation of new foundations
- Below and above ground drainage
- New ground supported and part suspended concrete floor slab
- Eighteen storey steel frame structure
- External clad and glazed envelope
- Suspended metal deck and concrete floors
- Flat roof structures and finishes
- Aluminium curtain walling, external windows and doors and shopfronts
- External balconies and balustrades
- Internal sub-division of retail units and apartments with non-loadbearing block and stud partitions
- Installation of plumbing services and mechanical services
- Installation of electrical services
- Installation of new lift car access
- Installation of kitchen and sanitary fittings
- New internal finishes, joinery fittings and decorations

Site Location



Aerial View of the site prior to demolition



Aerial view of the site location of Parliament Square

Building Structure

Parliament Square, Liverpool
New Build Development

Sub-Structure & Super-Structure Progress

MAY 2023

Site investigations	100% complete
Site compound and temporary supplies	100% complete
Demolition and site clearance	100% complete
Ground infill and site levelling	100% complete
Piling foundations	100% complete
Retaining walls, concrete beam foundations	100% complete
Basement slab construction	100% complete
Ground floor slab construction	100% complete
Concrete deck floor construction to upper floors	100% complete
Lift and staircase core concrete structure	100% complete
Concrete frame structure	100% complete
Internal staircase structure	100% complete
Sub-structure masonry walls	7.5% complete
Structural framework forming external walls	97% complete
Scaffolding & mast climber access	100% complete
Flat roof covering including balconies	17% complete
Weatherboarding	97% complete
External windows / doors & curtain walling	97% complete
External wall cladding and insulation	0% complete

Sub-Structure & Super-Structure Progress

MAY 2023



Block D Section A – Viewed from Parliament Street



Block D Section A – Viewed from Parliament Street

Sub-Structure & Super-Structure Progress

MAY 2023



Block D Section A – Viewed from Parliament Street



Block D Section A – Viewed from Parliament Street

Sub-Structure & Super-Structure Progress

MAY 2023



Block D Section A – Window units



Block D Section B – Weatherboarding

Sub-Structure & Super-Structure Progress

MAY 2023



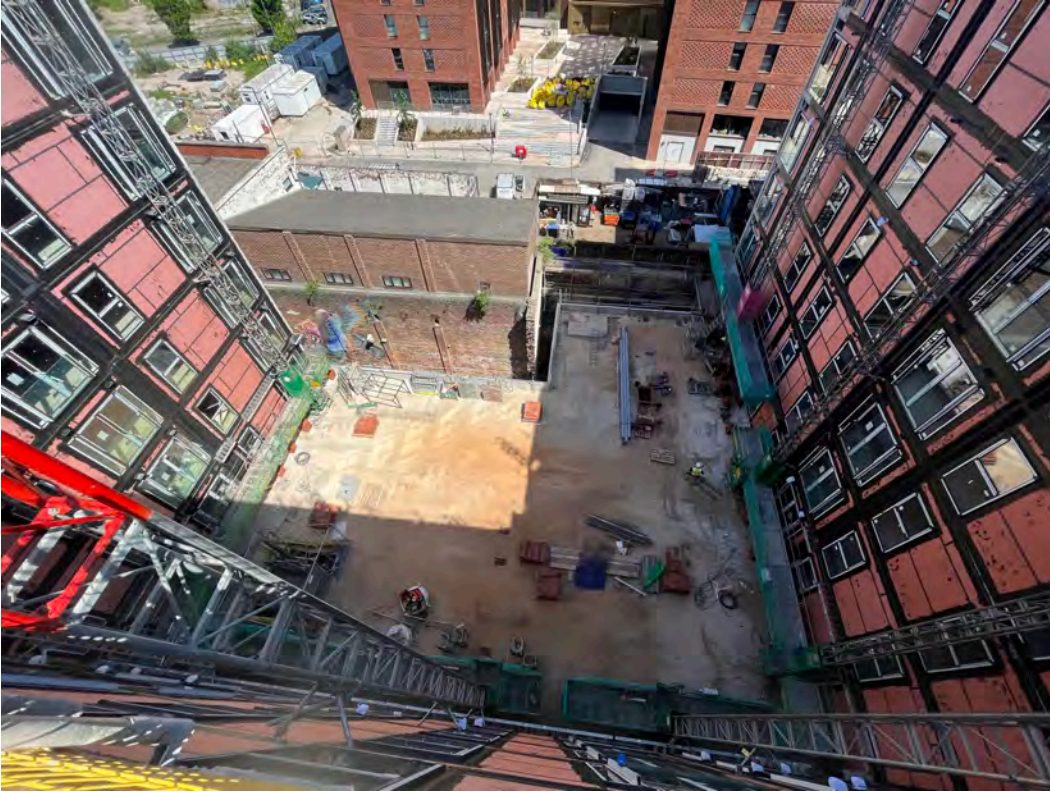
Block D Section B – Viewed from site compound



Block D Section B – Viewed from site compound

Sub-Structure & Super-Structure Progress

MAY 2023



Block D Section C – Podium



Block D Section B – SFS & Weatherboarding Installation

Sub-Structure & Super-Structure Progress

MAY 2023



Block D Section A – SFS & Weatherboarding Installation



Block D Section B – SFS Installation

Sub-Structure & Super-Structure Progress

MAY 2023



Block D – SFS & Weatherboarding Installation



Block D – Weatherboarding and waterproofing Installation

Sub-Structure & Super-Structure Progress

MAY 2023



Block D – External brickwork and insulation ongoing



Block D – External brickwork and insulation ongoing

Internal Fit-out Progress

MAY 2023



Block D – External brickwork ongoing



Block D – External brickwork and insulation ongoing

Sub-Structure & Super-Structure Progress

MAY 2023



Block D Section A – Roof



Block D Section A – Roof

Sub-Structure & Super-Structure Progress

MAY 2023



Block D Section A – Single ply membrane Installation



Block D Section A – Single ply membrane Installation

Sub-Structure & Super-Structure Progress

MAY 2023



Ground floor external brickwork ongoing



Ground floor cavity tray installed

Sub-Structure & Super-Structure Progress

MAY 2023



Ductwork channels formed to substation



Ground Floor Internal blockwork ongoing

Sub-Structure & Super-Structure Progress

MAY 2023



Ground Floor brickwork ongoing



Ground Floor brickwork ongoing

Sub-Structure & Super-Structure Progress

MAY 2023



Sub-station construction ongoing



Ground floor brickwork walls

Sub-Structure & Super-Structure Progress

MAY 2023



Lift shaft construction ongoing



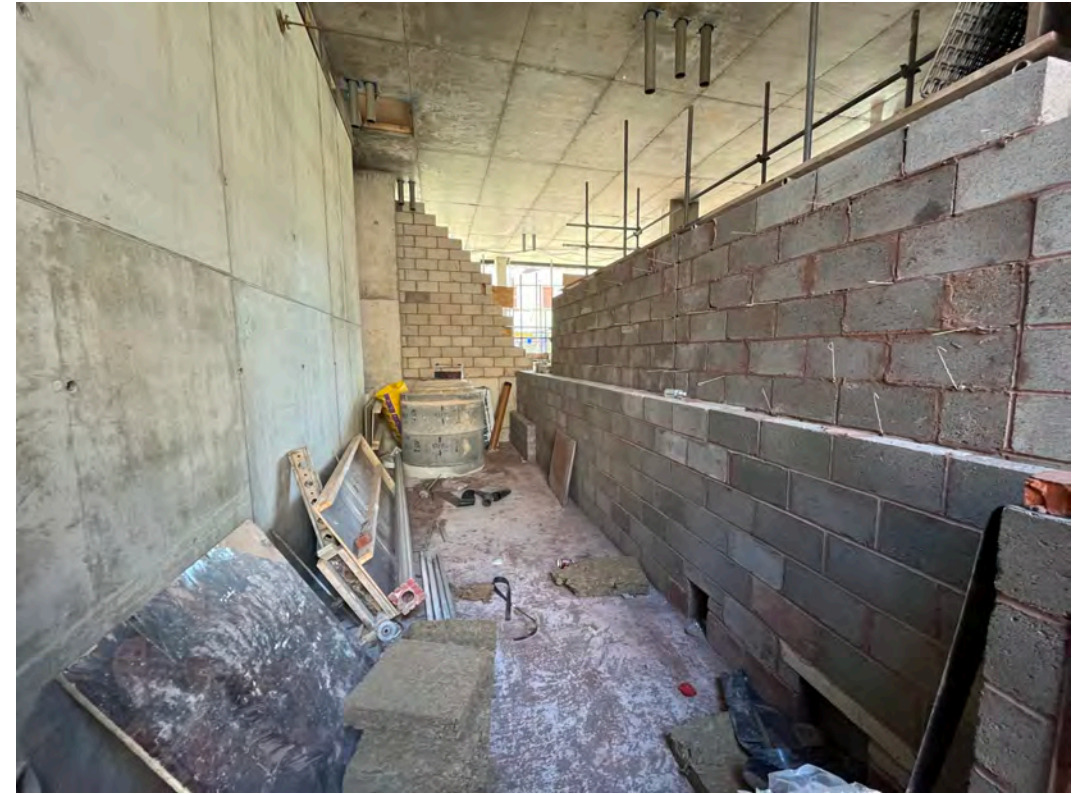
Bin chute installation has commenced

Sub-Structure & Super-Structure Progress

MAY 2023



Ground Floor Internal blockwork ongoing



Ground Floor Internal blockwork ongoing

Internal Fit-out Block 'D'

Parliament Square, Liverpool
New Build Development

Internal Fit-out Progress

MAY 2023

Core drilling for services	0% complete
Riser installation	0% complete
Lift installation	0% complete
Above ground drainage	90% complete
Partition walls installation	67% complete
Apartment ceiling installation	58% complete
Plaster finishes walls and ceilings	15.5% complete
1st fix electrical	50% complete
1st fix plumbing and heating	67% complete
Kitchen units and appliances	0% complete
Doorframes	0% complete
Skirting and architrave	0% complete
Bathroom sanitary fittings	9% complete
Wall and floor tiling	0% complete
Carpet and floor finishes	0% complete
Doors and ironmongery	0% complete
Decorations	2.8% complete
Second fix electrical	0% complete
Second fix plumbing and heating	0% complete
General fixtures and fittings	0% complete

Internal Fit-out Progress

MAY 2023



2nd side boarding of walls and ceiling ongoing



Plaster skim walls and ceiling application ongoing

Internal Fit-out Progress

MAY 2023



Mistcoat application to walls and ceiling ongoing



Mistcoat application to walls and ceiling ongoing

Internal Fit-out Progress

MAY 2023



Mistcoat application ongoing



1st fix electrical installation ongoing

Internal Fit-out Progress

MAY 2023



2nd side boarding ongoing



Aanitaryware installation ongoing

Internal Fit-out Progress

MAY 2023



Formation of IPS and patress installation ongoing



2nd side boarding and sanitaryware installation ongoing

Internal Fit-out Progress

MAY 2023



Bin chute installation



1st fix electrical installation and 1st side boarding ongoing

Internal Fit-out Progress

MAY 2023



Pattress installation ongoing



Insulation and pattress installation ongoing

Internal Fit-out Progress

MAY 2023



1st side boarding of walls and metal ceiling grid installation ongoing



1st side boarding of walls and pattress installation ongoing

Internal Fit-out Progress

MAY 2023



Apartment 1st fix mechanical installation ongoing



Apartment 1st fix mechanical installation ongoing

Internal Fit-out Progress

MAY 2023



Partition wall installation ongoing



Metal ceiling grid installation ongoing

Internal Fit-out Progress

MAY 2023



1st side boarding ongoing



1st side boarding ongoing

Internal Fit-out Progress

MAY 2023



Sprinkler system installation ongoing



Fire stopping installation ongoing

Internal Fit-out Progress

MAY 2023



1st fix mechanical hot and cold water feeds installation ongoing



1st fix mechanical ducting installation ongoing

Internal Fit-out Progress

MAY 2023



1st fix electrical containment installation ongoing



1st fix electrical installation ongoing

Internal Fit-out Progress

MAY 2023



Apartment setting out ongoing



Apartment setting out ongoing

Internal Fit-out Progress

MAY 2023



Main water distribution pipe installed



Sub-main installation ongoing to all levels

Internal Fit-out Progress

MAY 2023



Materials on-site: Masonry support brackets



Materials on-site: Masonry support brackets

Internal Fit-out Progress

MAY 2023



Materials on-site: Brick



Materials on-site: ROCKSIL Insulation

Internal Fit-out Progress

MAY 2023



Materials on-site: Industrial block



Materials on-site: Lintels

TO FIND OUT MORE ABOUT

Parliament Square, Liverpool

PLEASE CONTACT

legacie

WWW.LEGACIE.CO.UK

By Appointment Only
Unit 4 Connect Business Village
Liverpool, L5 9PR
+44 (0) 151 207 9990