

legacie



# Parliament Square Block 'B' Investors Report

IR24 September 2022

# Parliament Square – Phase 1 Block B

## 97 Luxury Apartments



Land at corner of Upper Parliament Street & Great St George Street, Liverpool L1

### Schedule of Accommodation Block 'B'

#### Basement

- Car parking
- Sub-Station
- Plant

#### Ground Floor

- Retail units
- Refuse store
- Hard and soft landscaping

#### Floors 1 - 11

- 31 no. Studio Apartments
- 22no. 1 Bedroom Apartments
- 44 no. 2 Bedroom Apartments

# New Build Two Phase Development to Create Residential Apartments Retail Units & Basement Parking



Land at corner of Upper Parliament Street & Great St George Street, Liverpool L1

## The eleven storey new build development generally comprises:

- Demolition of adjoining structures and perimeter walls
- Site clearance and levelling
- Site investigations and trial holes
- Excavation and formation of new foundations
- Below and above ground drainage
- New ground supported and part suspended concrete floor slab
- Eighteen storey steel frame structure
- External clad and glazed envelope
- Suspended metal deck and concrete floors
- Flat roof structures and finishes
- Aluminium curtain walling, external windows and doors and shopfronts
- External balconies and balustrades
- Internal sub-division of retail units and apartments with non-loadbearing block and stud partitions
- Installation of plumbing services and mechanical services
- Installation of electrical services
- Installation of new lift car access
- Installation of kitchen and sanitary fittings
- New internal finishes, joinery fittings and decorations

# Building Structure

Parliament Square, Liverpool  
New Build Development

# Sub-Structure & Super-Structure Construction Progress

SEPTEMBER 2022

Floor slab construction	100% complete
Steel frame structure	100% complete
Upper suspended steel floor structure	100% complete
Concrete pour upper suspended floor structure	100% complete
Internal staircase structure	100% complete
Sub-structure Masonry wall	100% complete
Fire coating steel framework	100% complete
Structural framework forming external walls	100% complete
Flat roof structure and covering	100% complete
Podium steel structure	100% complete
Podium concrete poured	100% complete
Mast climber installation	100% complete
Weatherboarding	100% complete
Brickwork to elevations	98% complete
Cladding installation	98% complete
Window installation	98% complete

# Sub-Structure & Super-Structure Progress

SEPTEMBER 2022



Block B – Viewed from Greenland Street



Block B – Viewed from Block D

# Sub-Structure & Super-Structure Progress

SEPTEMBER 2022



Block B – Viewed from St James Street



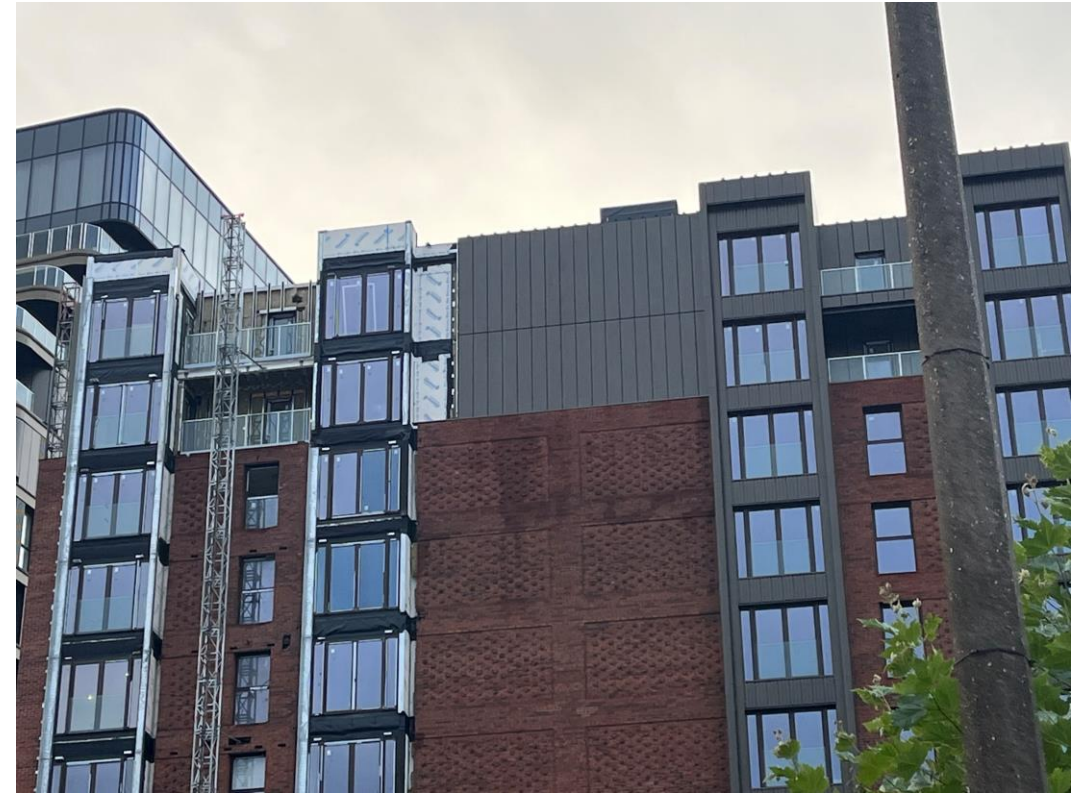
Block B – Brickwork & cladding installation

# Sub-Structure & Super-Structure Progress

SEPTEMBER 2022



Block B – Viewed from St James Street



Block B – Brickwork & cladding installation



# Sub-Structure & Super-Structure Progress

SEPTEMBER 2022



Block B – Brickwork & cladding installation



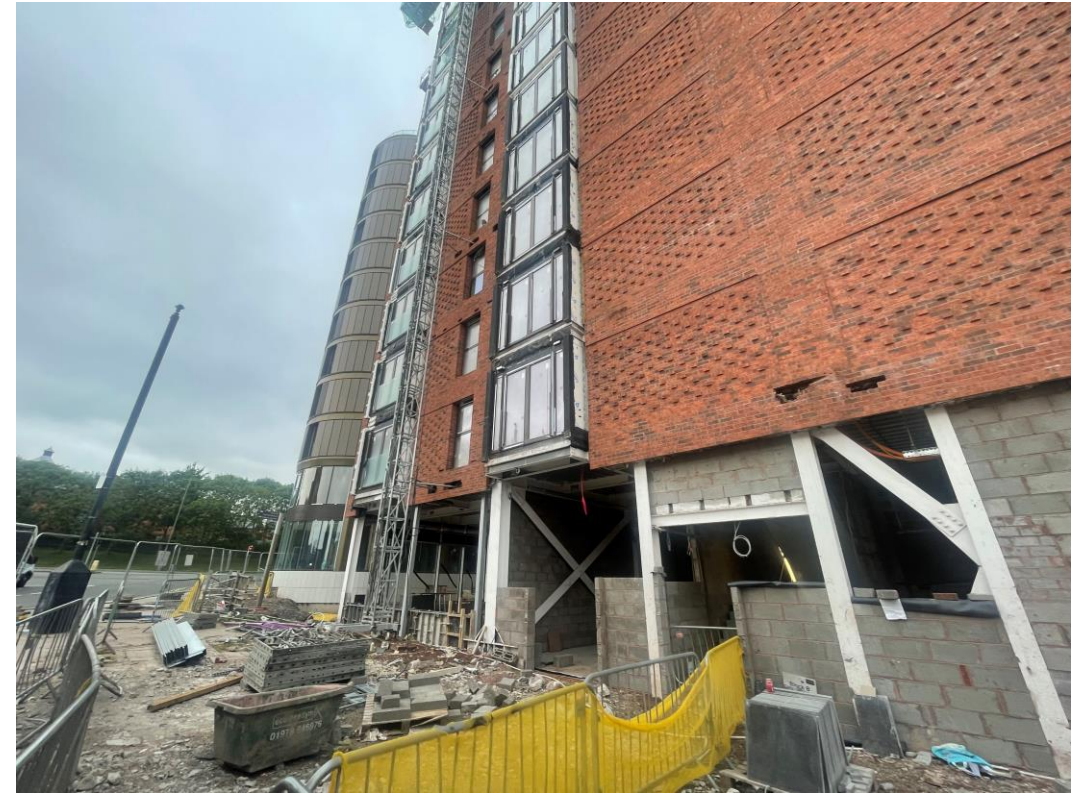
Block B – Window & Door Installation

# Sub-Structure & Super-Structure Progress

SEPTEMBER 2022



Block B – Forming of Block B entrance



Block B – Forming of Block B entrance

# Sub-Structure & Super-Structure Progress

SEPTEMBER 2022



Insulation installed



Cladding framework installation ongoing

# Sub-Structure & Super-Structure Progress

SEPTEMBER 2022



Liquid water proofing ongoing



Insulation installed

# Sub-Structure & Super-Structure Progress

SEPTEMBER 2022



Glazed balustrade installed



Soffit cladding installation ongoing

# Internal Fit-out Block 'B'

Parliament Square, Liverpool  
New Build Development

# BLOCK B

## Internal Fit-out

### Construction Progress

SEPTEMBER 2022

Core drilling for services	100% complete
Riser installation	100% complete
Lift installation	100% complete
Above ground drainage	100% complete
Partition walls installation	100% complete
Apartment ceiling installation	100% complete
Plaster finishes walls and ceilings	100% complete
1st fix electrical	100% complete
1st fix plumbing and heating	100% complete
Kitchen units and appliances	99% complete
Doorframes	100% complete
Skirting and architrave	96% complete
Bathroom sanitary fittings	96% complete
Wall and floor tiling	100% complete
Carpet and floor finishes	76% complete
Doors and ironmongery	88.5% complete
Decorations	76% complete
2 <sup>nd</sup> fix electrical	93% complete
2 <sup>nd</sup> fix plumbing and heating	93% complete
General fixtures and fittings	88% complete

# Sub-Structure & Super-Structure Progress

SEPTEMBER 2022



Firestopping works



Firestopping works



# Sub-Structure & Super-Structure Progress

SEPTEMBER 2022



Ceiling grid installed



Plaster board installed

# Sub-Structure & Super-Structure Progress

SEPTEMBER 2022



Sprinkler system



Bin Chute

# Sub-Structure & Super-Structure Progress

SEPTEMBER 2022



Staircase joint infill



Boarding to staircase areas

# Sub-Structure & Super-Structure Progress

SEPTEMBER 2022



Lift area finishes



Circulation area finishes

# Sub-Structure & Super-Structure Progress

SEPTEMBER 2022



Lift level numbers installed



Lift lobby finishes ongoing

# Sub-Structure & Super-Structure Progress

AUGUST 2022



Circulation area finishes



Circulation area finishes

# Sub-Structure & Super-Structure Progress

SEPTEMBER 2022



Doors installed to water distribution cupboard



Ventilation covers installed

# Sub-Structure & Super-Structure Progress

SEPTEMBER 2022



Electrical meters installed

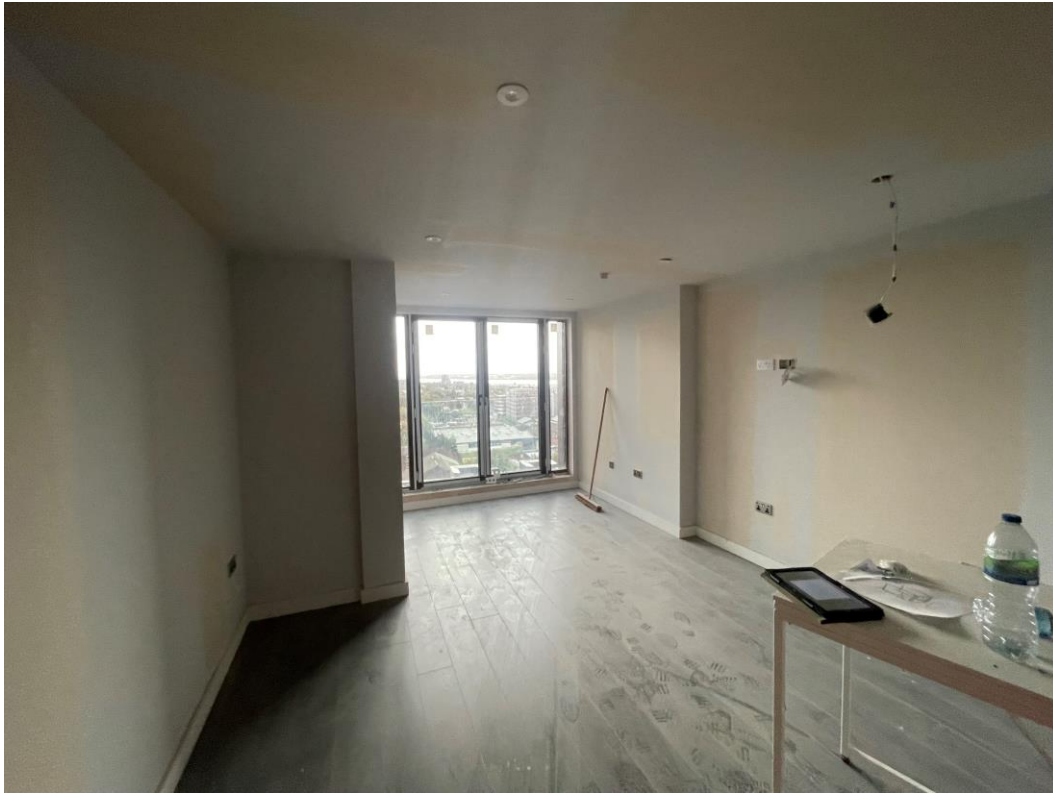


Water meters installed



# Sub-Structure & Super-Structure Progress

SEPTEMBER 2022



Lounge finishes ongoing



Kitchen installed

# Sub-Structure & Super-Structure Progress

SEPTEMBER 2022



Lounge finishes ongoing



Lounge finishes ongoing

# Sub-Structure & Super-Structure Progress

SEPTEMBER 2022



Apartment doors & ironmongery



2<sup>nd</sup> Coat decoration to bedroom wall & ceilings

# Sub-Structure & Super-Structure Progress

SEPTEMBER 2022



Kitchen installed



Window boards installed

# Sub-Structure & Super-Structure Progress

SEPTEMBER 2022



Bedroom carpets installed to upper levels



Bedroom carpets installed to upper levels

# Sub-Structure & Super-Structure Progress

SEPTEMBER 2022



Bathroom appliances installed



Bathroom mirror installed

# Sub-Structure & Super-Structure Progress

SEPTEMBER 2022



Bedroom finishes complete



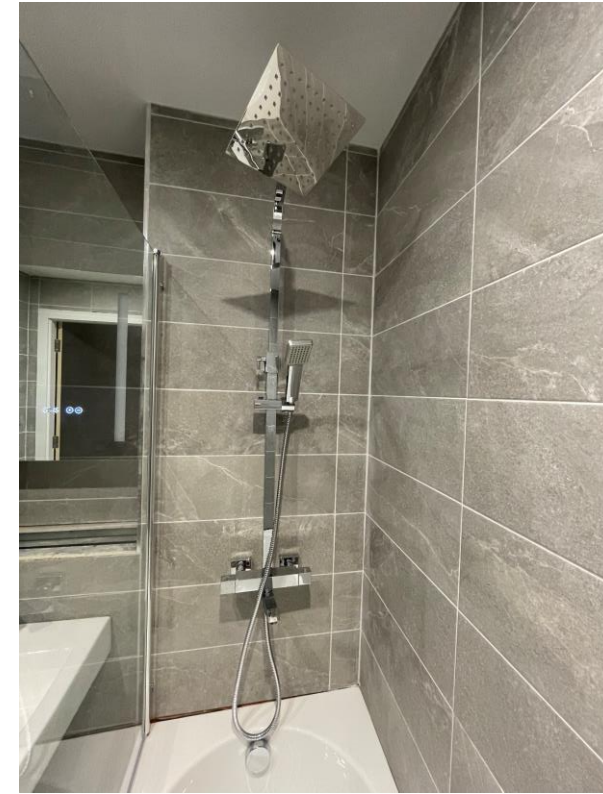
Ensuite sanitary items installed

# Sub-Structure & Super-Structure Progress

SEPTEMBER 2022



Ensuite mirrors installed



Shower bar & head installed



# Sub-Structure & Super-Structure Progress

SEPTEMBER 2022



Bath installed



Towel radiator installed

# Sub-Structure & Super-Structure Progress

SEPTEMBER 2022



2<sup>nd</sup> Fix M&E installation ongoing



CCTV Installed

# Sub-Structure & Super-Structure Progress

SEPTEMBER 2022



Tv bracket installed



Lift level number indicator

# Sub-Structure & Super-Structure Progress

SEPTEMBER 2022



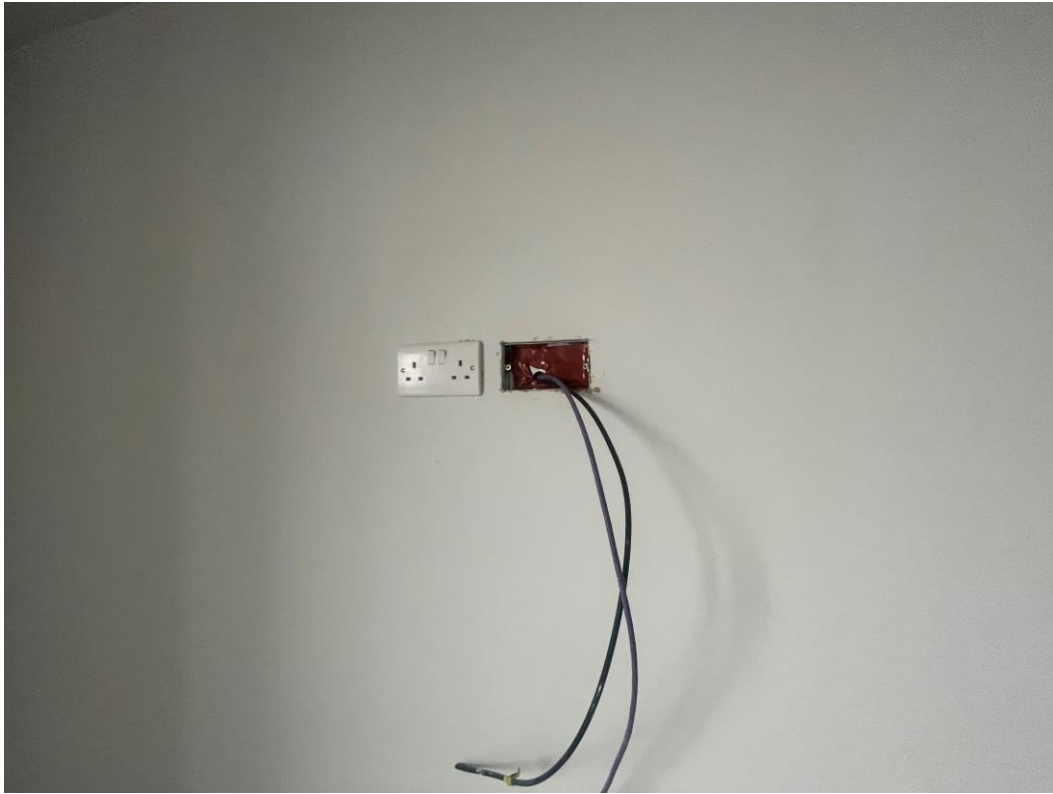
Consumer unit



Consumer unit

# Sub-Structure & Super-Structure Progress

SEPTEMBER 2022



1<sup>st</sup> Fix electrical



Consumer unit

# Sub-Structure & Super-Structure Progress

SEPTEMBER 2022



2<sup>nd</sup> Fix M&E ongoing



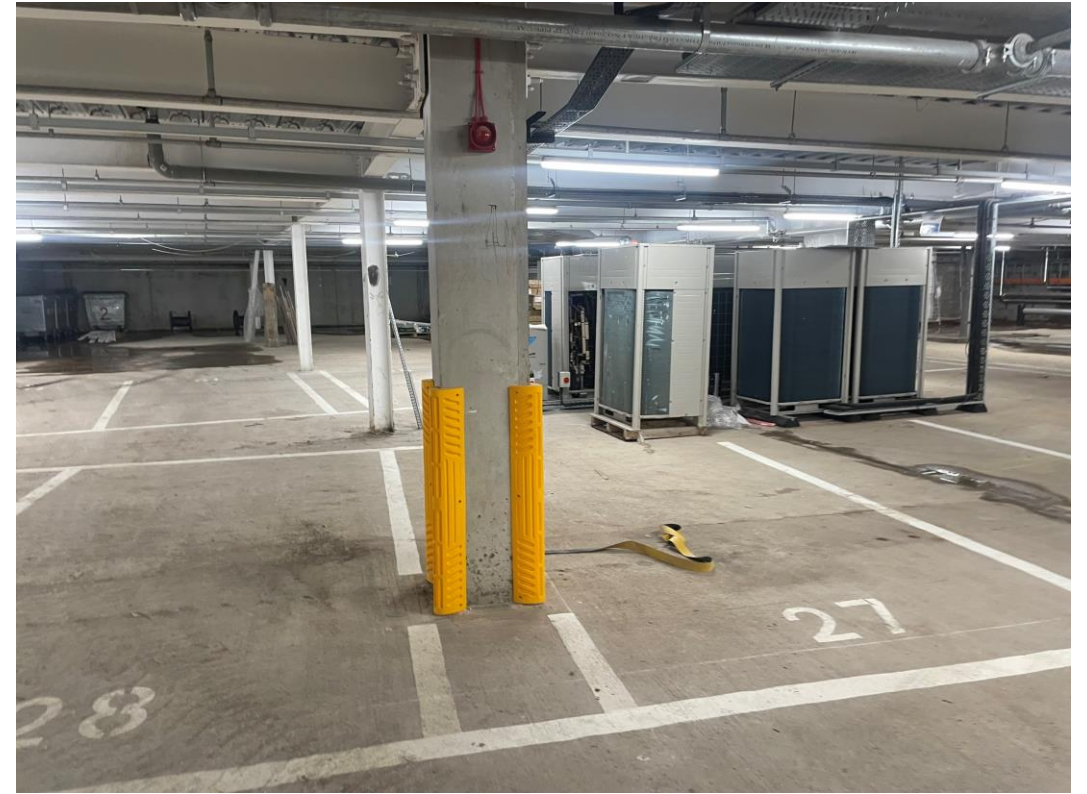
2<sup>nd</sup> Fix M&E ongoing

# Sub-Structure & Super-Structure Progress

SEPTEMBER 2022



Road markings installed



Column protection installed

# Sub-Structure & Super-Structure Progress

SEPTEMBER 2022



A-Safe vehicle barriers installed



CCTV Installed



TO FIND OUT MORE ABOUT

Parliament Square, Liverpool

PLEASE CONTACT

legacie

WWW.LEGACIE.CO.UK

By Appointment Only  
Unit 4 Connect Business Village  
Liverpool, L5 9PR  
+44 (0) 151 207 9990