

legacie



# Parliament Square Block 'D' Investors Report

IR23 April 2023

# Parliament Square – Phase 1 Block D

## 97 Luxury Apartments



Land at corner of Upper Parliament Street & Great St George Street, Liverpool L1

### Schedule of Accommodation Block 'D'

#### Basement

- Car parking
- Sub-Station
- Plant

#### Ground Floor

- Retail units
- Refuse store
- Hard and soft landscaping

#### Floors 1 - 11

- 31 no. Studio Apartments
- 22no. 1 Bedroom Apartments
- 44 no. 2 Bedroom Apartments

# New Build Two Phase Development to Create Residential Apartments Retail Units & Basement Parking

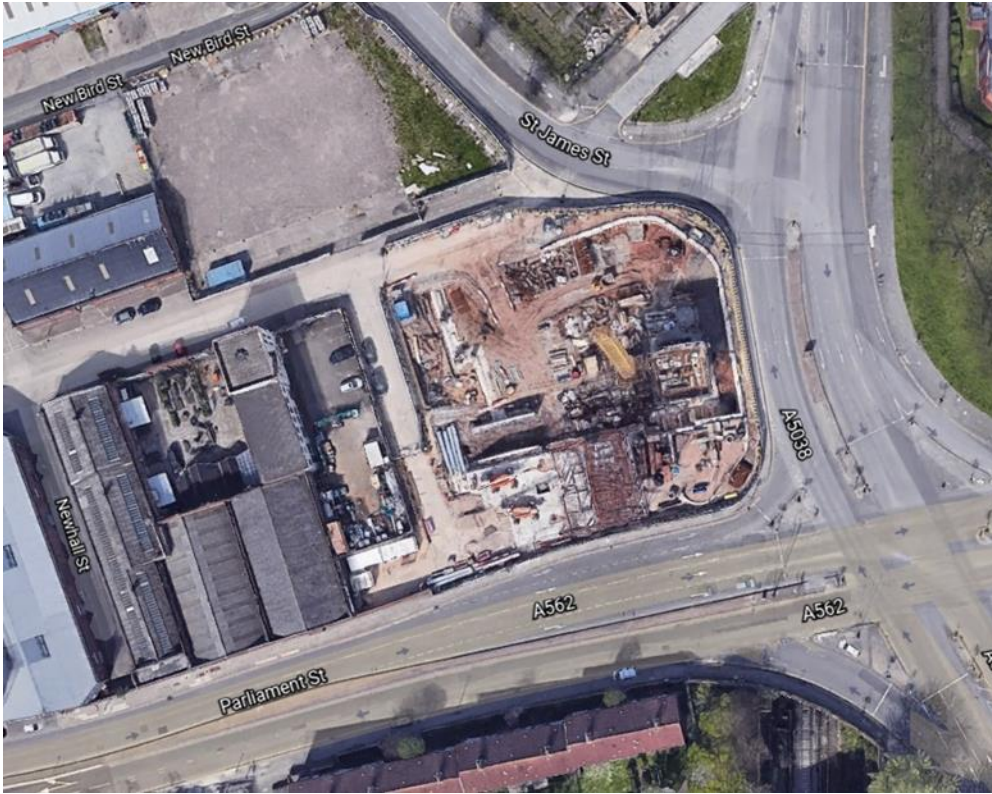


Land at corner of Upper Parliament Street & Great St George Street, Liverpool L1

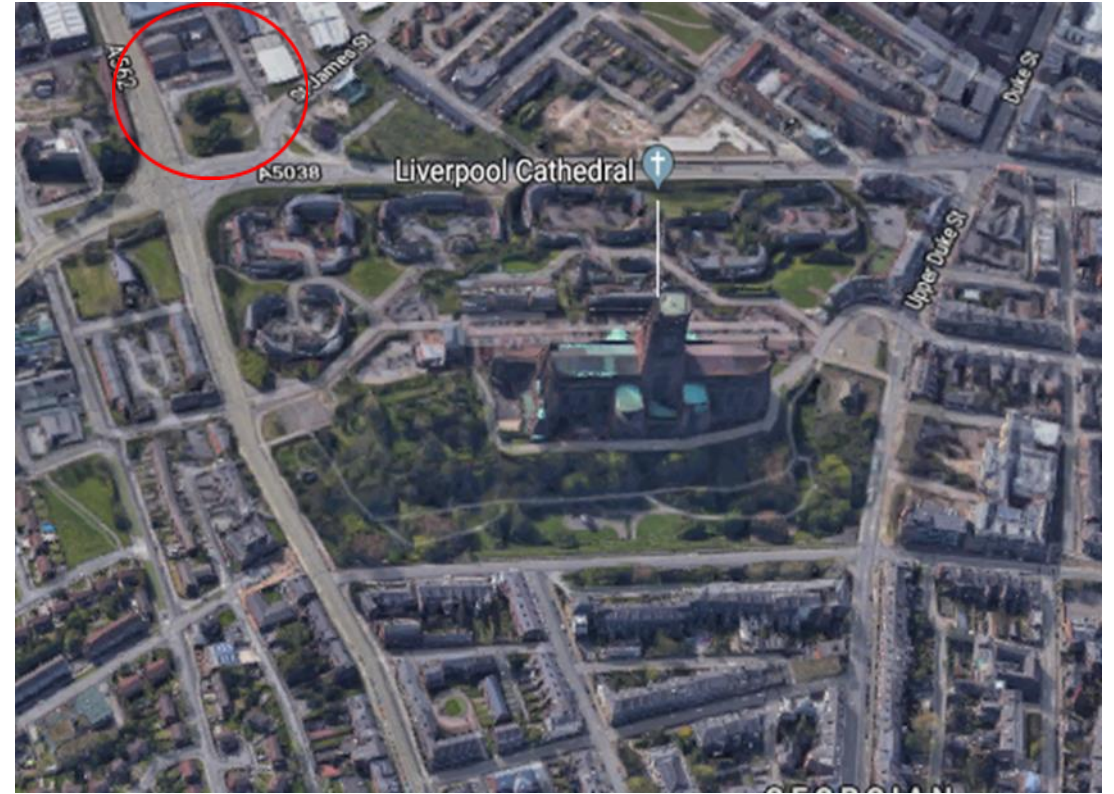
## The eleven storey new build development generally comprises:

- Demolition of adjoining structures and perimeter walls
- Site clearance and levelling
- Site investigations and trial holes
- Excavation and formation of new foundations
- Below and above ground drainage
- New ground supported and part suspended concrete floor slab
- Eighteen storey steel frame structure
- External clad and glazed envelope
- Suspended metal deck and concrete floors
- Flat roof structures and finishes
- Aluminium curtain walling, external windows and doors and shopfronts
- External balconies and balustrades
- Internal sub-division of retail units and apartments with non-loadbearing block and stud partitions
- Installation of plumbing services and mechanical services
- Installation of electrical services
- Installation of new lift car access
- Installation of kitchen and sanitary fittings
- New internal finishes, joinery fittings and decorations

# Site Location



Aerial View of the site prior to demolition



Aerial view of the site location of Parliament Square

# Building Structure

Parliament Square, Liverpool  
New Build Development

# Sub-Structure & Super-Structure Progress

APRIL 2023

Site investigations	100% complete
Site compound and temporary supplies	100% complete
Demolition and site clearance	100% complete
Ground infill and site levelling	100% complete
Piling foundations	100% complete
Retaining walls, concrete beam foundations	100% complete
Basement slab construction	100% complete
Ground floor slab construction	100% complete
Concrete deck floor construction to upper floors	100% complete
Lift and staircase core concrete structure	100% complete
Concrete frame structure	100% complete
Internal staircase structure	100% complete
Sub-structure masonry walls	98% complete
Structural framework forming external walls	97% complete
Scaffolding & mast climber access	100% complete
Flat roof covering including balconies	0% complete
Weatherboarding	97% complete
External windows / doors & curtain walling	97% complete
External wall cladding and insulation	0% complete

# Sub-Structure & Super-Structure Progress

APRIL 2023



Block D Section A – Viewed from Greenland Street



Block D Section A – Viewed from Greenland Street

# Sub-Structure & Super-Structure Progress

APRIL 2023



Block D Section A – Viewed from Greenland Street



Block D Section A – Viewed from Greenland Street



# Sub-Structure & Super-Structure Progress

APRIL 2023



Block D Section A – Window units



Block D Section B – Weatherboarding

# Sub-Structure & Super-Structure Progress

APRIL 2023



Block D Section B – Viewed from Parliament Street



Block D Section B – Viewed from Parliament Street

# Sub-Structure & Super-Structure Progress

APRIL 2023



Block D Section B – Viewed from Parliament Street



Block D Section B – External weatherboarding

# Sub-Structure & Super-Structure Progress

APRIL 2023



Block D Section A – SFS & Weatherboarding Installation



Block D Section B – SFS & Weatherboarding Installation

# Sub-Structure & Super-Structure Progress

APRIL 2023



Block D Section C – Roof



Block D Section B – SFS Installation

# Sub-Structure & Super-Structure Progress

APRIL 2023



Block D – Masonry supports



Block D – Curtain wall supports

# Sub-Structure & Super-Structure Progress

APRIL 2023



Block D – External mechanical ventilation



Block D – Window units

# Sub-Structure & Super-Structure Progress

APRIL 2023



Block D Section B – Roof



Block D Section B – Single ply membrane Installation



# Sub-Structure & Super-Structure Progress

APRIL 2023



Block D Section B – Single ply membrane Installation



Block D Section B – Roof

# Sub-Structure & Super-Structure Progress

APRIL 2023



Block D Section B - Insulation boarding installed



Block D Section A - Single ply membrane Installed to parapet walls

# Sub-Structure & Super-Structure Progress

APRIL 2023



Ground floor blockwork wall



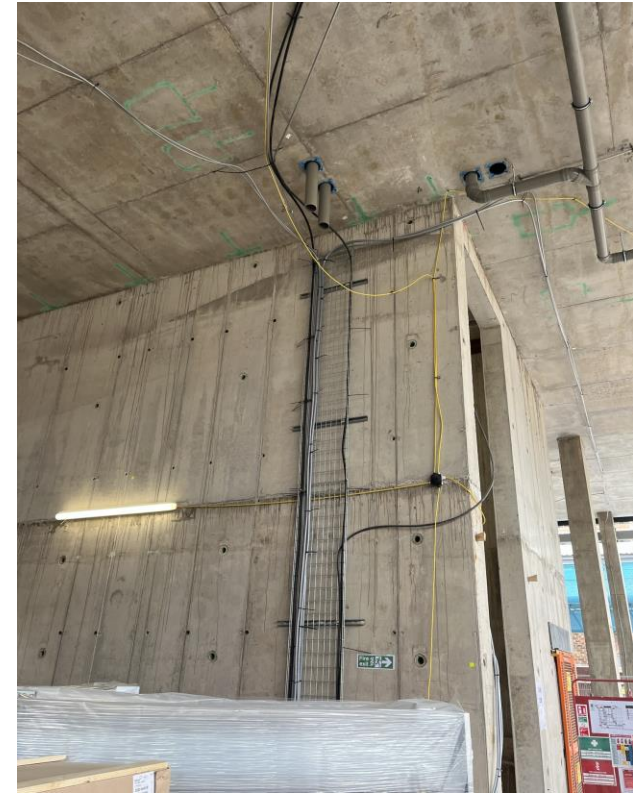
Ground floor blockwork wall

# Sub-Structure & Super-Structure Progress

APRIL 2023



Concrete upstand in place



Ground Floor – Electrical containment

# Sub-Structure & Super-Structure Progress

APRIL 2023



Ground floor blockwork lift shaft



Ground floor blockwork wall

# Sub-Structure & Super-Structure Progress

APRIL 2023



Ductwork channels formed to substation



Substation substructure brickwork

# Sub-Structure & Super-Structure Progress

APRIL 2023



Ground floor brickwork walls



Ground floor brickwork walls

# Sub-Structure & Super-Structure Progress

APRIL 2023



Ground floor blockwork walls



Ground floor brickwork walls



# Internal Fit-out Block 'D'

Parliament Square, Liverpool  
New Build Development

# Internal Fit-out Progress

APRIL 2023

Core drilling for services	0% complete
Riser installation	0% complete
Lift installation	0% complete
Above ground drainage	90% complete
Partition walls installation	29% complete
Apartment ceiling installation	18% complete
Plaster finishes walls and ceilings	0% complete
1st fix electrical	45% complete
1st fix plumbing and heating	57% complete
Kitchen units and appliances	0% complete
Doorframes	0% complete
Skirting and architrave	0% complete
Bathroom sanitary fittings	0% complete
Wall and floor tiling	0% complete
Carpet and floor finishes	0% complete
Doors and ironmongery	0% complete
Decorations	0% complete
Second fix electrical	0% complete
Second fix plumbing and heating	0% complete
General fixtures and fittings	0% complete

# Internal Fit-out Progress

APRIL 2023



Lift shaft blockwork



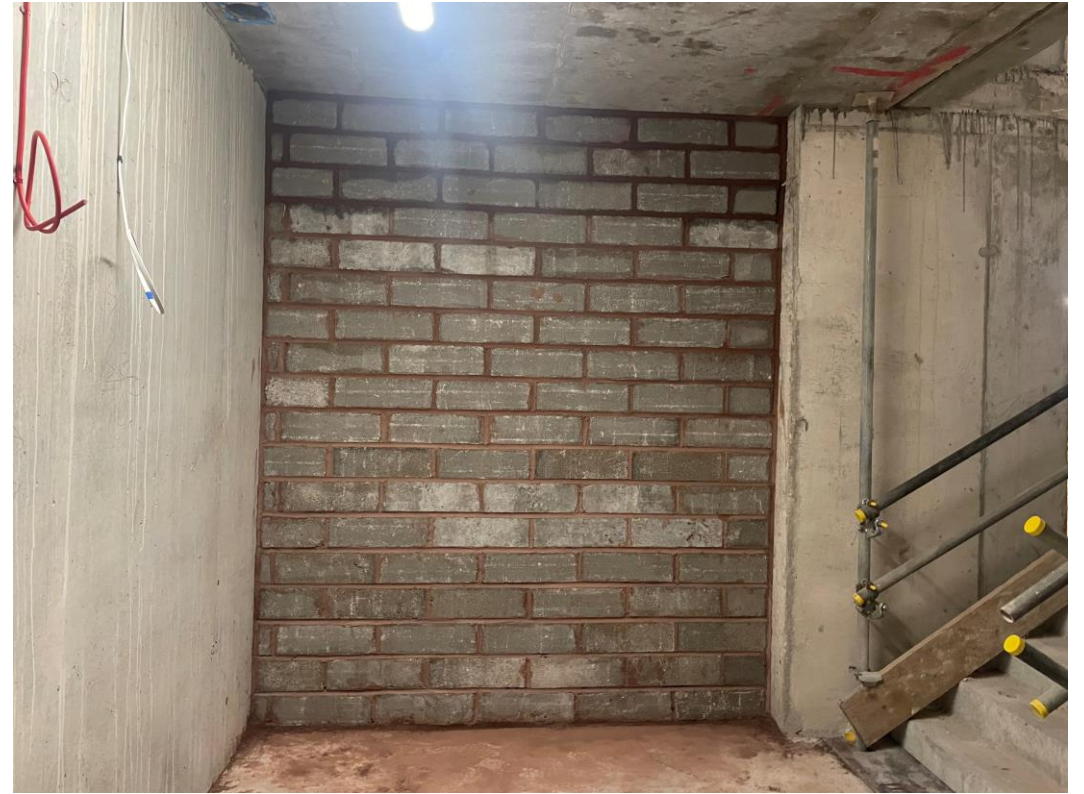
Blockwork walls formed

# Internal Fit-out Progress

APRIL 2023



Lift shaft blockwork



Lift shaft blockwork

# Internal Fit-out Progress

APRIL 2023



SFS installation nearing completion



General site activity

# Internal Fit-out Progress

APRIL 2023



First side partition boarding ongoing



First side partition boarding ongoing

# Internal Fit-out Progress

APRIL 2023



OSB board pattress installation commenced



OSB board pattress installation commenced

# Internal Fit-out Progress

APRIL 2023



First side partition boarding ongoing



First side partition boarding ongoing



# Internal Fit-out Progress

APRIL 2023



Ceiling grid installation ongoing



1<sup>st</sup> fix Electrical installation ongoing

# Internal Fit-out Progress

APRIL 2023



1<sup>st</sup> Fix Electrical installation ongoing



1<sup>st</sup> Fix Electrical installation ongoing

# Internal Fit-out Progress

APRIL 2023



1<sup>st</sup> Fix Mechanical ducting installation ongoing



Sprinkler system installation ongoing

# Internal Fit-out Progress

APRIL 2023



1<sup>st</sup> Fix Mechanical ducting installation ongoing



Sprinkler system installation ongoing

# Internal Fit-out Progress

APRIL 2023



1<sup>st</sup> Fix Mechanical ducting installation



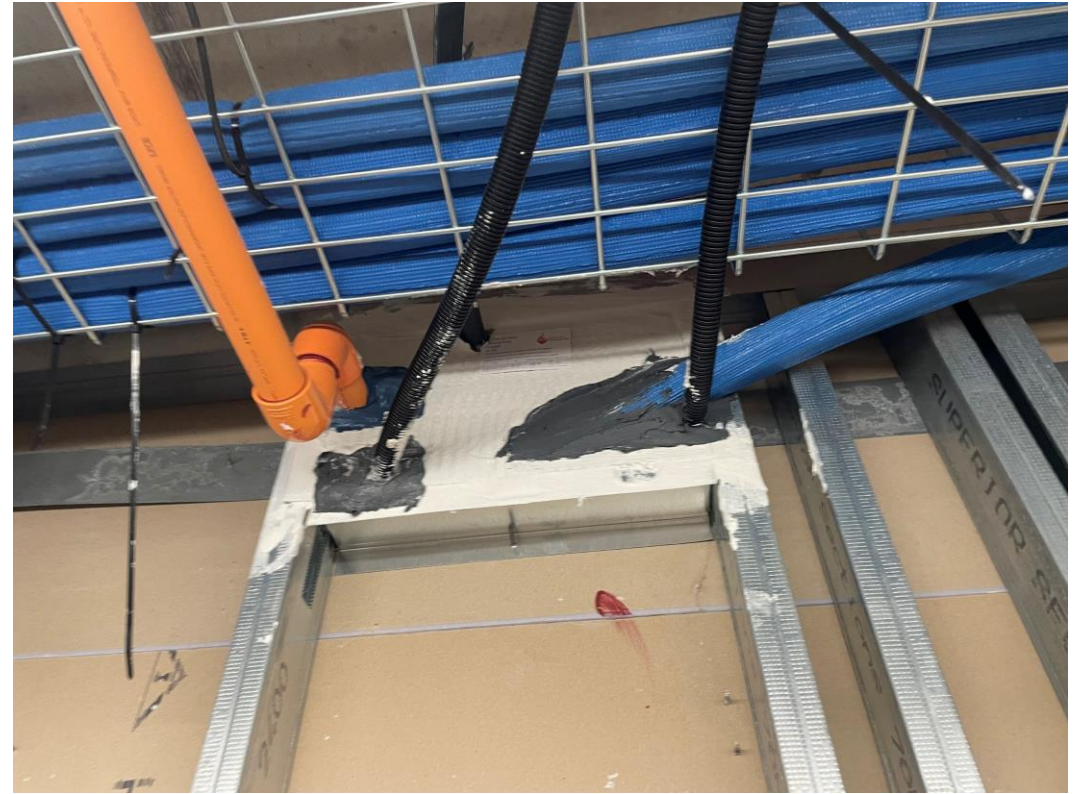
1<sup>st</sup> Fix Mechanical ducting installation

# Internal Fit-out Progress

APRIL 2023



1<sup>st</sup> Fix Electrical Installation



Fire stopping works commenced

# Internal Fit-out Progress

APRIL 2023



Metal IPS installation ongoing



WC Cistern installation commenced

# Internal Fit-out Progress

APRIL 2023



Apartment hot & cold water feed installation ongoing



Apartment drainage ongoing



# Internal Fit-out Progress

APRIL 2023



Apartment water distribution pipeworkk



Apartment water distribution pipeworkk

# Internal Fit-out Progress

APRIL 2023



1<sup>st</sup> Fix electrical cabling



Lift components stored onsite for installation

# Internal Fit-out Progress

APRIL 2023



Single ply membrane stored onsite for installation



Bricks stored onsite for installation

# Internal Fit-out Progress

APRIL 2023



Glazing units on site for installation



Window frames on site for installation

# Internal Fit-out Progress

APRIL 2023



Plasterboard stored onsite for installation



Metal partitions stored onsite for installation

TO FIND OUT MORE ABOUT

Parliament Square, Liverpool

PLEASE CONTACT

legacie

WWW.LEGACIE.CO.UK

By Appointment Only  
Unit 4 Connect Business Village  
Liverpool, L5 9PR  
+44 (0) 151 207 9990