

legacie



Parliament Square Block 'D' Investors Report

IR22 March 2023

Parliament Square – Phase 1 Block D

97 Luxury Apartments



Land at corner of Upper Parliament Street & Great St George Street, Liverpool L1

Schedule of Accommodation Block 'D'

Basement

- Car parking
- Sub-Station
- Plant

Ground Floor

- Retail units
- Refuse store
- Hard and soft landscaping

Floors 1 - 11

- 31 no. Studio Apartments
- 22no. 1 Bedroom Apartments
- 44 no. 2 Bedroom Apartments

New Build Two Phase Development to Create Residential Apartments Retail Units & Basement Parking

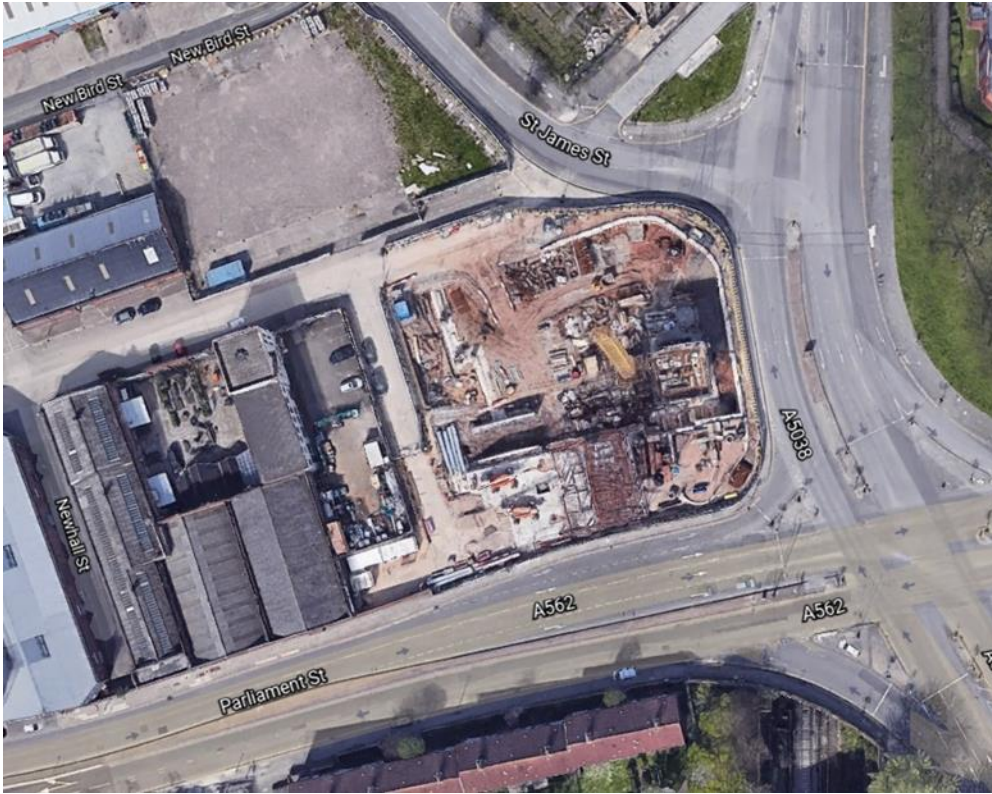


Land at corner of Upper Parliament Street & Great St George Street, Liverpool L1

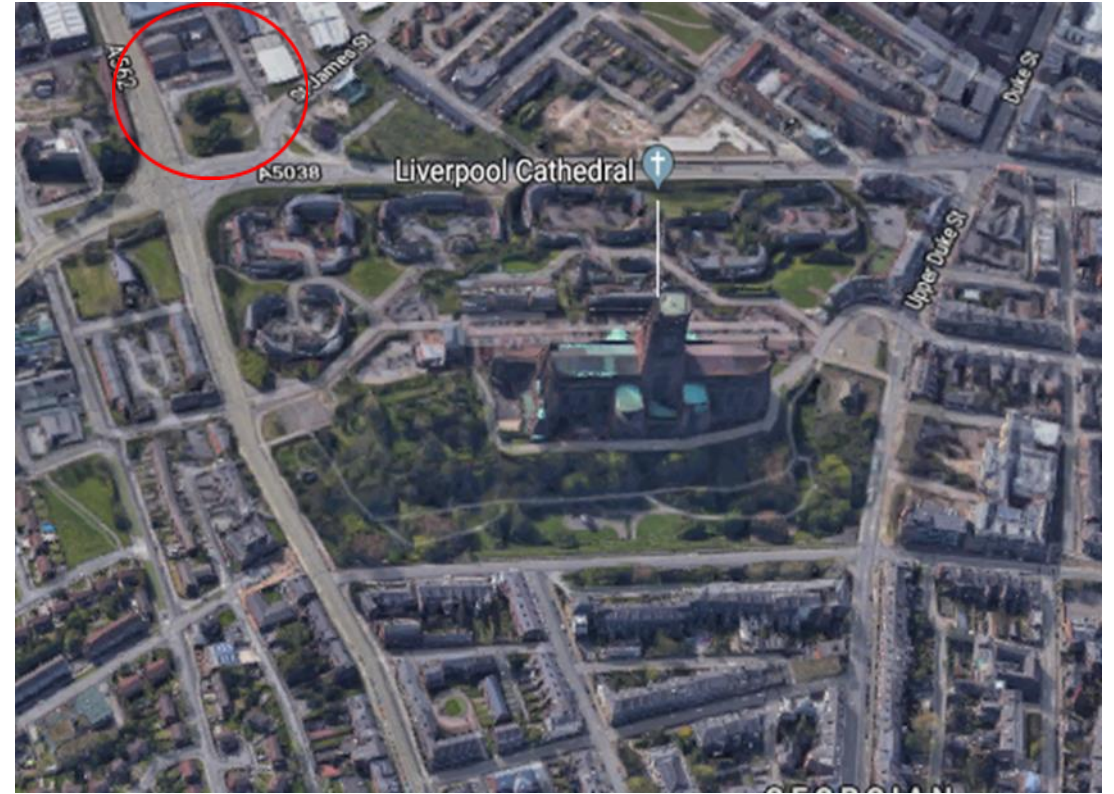
The eleven storey new build development generally comprises:

- Demolition of adjoining structures and perimeter walls
- Site clearance and levelling
- Site investigations and trial holes
- Excavation and formation of new foundations
- Below and above ground drainage
- New ground supported and part suspended concrete floor slab
- Eighteen storey steel frame structure
- External clad and glazed envelope
- Suspended metal deck and concrete floors
- Flat roof structures and finishes
- Aluminium curtain walling, external windows and doors and shopfronts
- External balconies and balustrades
- Internal sub-division of retail units and apartments with non-loadbearing block and stud partitions
- Installation of plumbing services and mechanical services
- Installation of electrical services
- Installation of new lift car access
- Installation of kitchen and sanitary fittings
- New internal finishes, joinery fittings and decorations

Site Location



Aerial View of the site prior to demolition



Aerial view of the site location of Parliament Square

Building Structure

Parliament Square, Liverpool
New Build Development

Sub-Structure & Super-Structure Progress

MARCH 2023

Site investigations	100% complete
Site compound and temporary supplies	100% complete
Demolition and site clearance	100% complete
Ground infill and site levelling	100% complete
Piling foundations	100% complete
Retaining walls, concrete beam foundations	100% complete
Basement slab construction	100% complete
Ground floor slab construction	100% complete
Concrete deck floor construction to upper floors	100% complete
Lift and staircase core concrete structure	100% complete
Concrete frame structure	100% complete
Internal staircase structure	100% complete
Sub-structure masonry walls	95% complete
Structural framework forming external walls	88% complete
Scaffolding & mast climber access	100% complete
Flat roof covering including balconies	0% complete
Weatherboarding	84% complete
External windows / doors & curtain walling	63% complete
External wall cladding and insulation	0% complete

Sub-Structure & Super-Structure Progress

MARCH 2023



Block D Section A – Viewed from Greenland Street



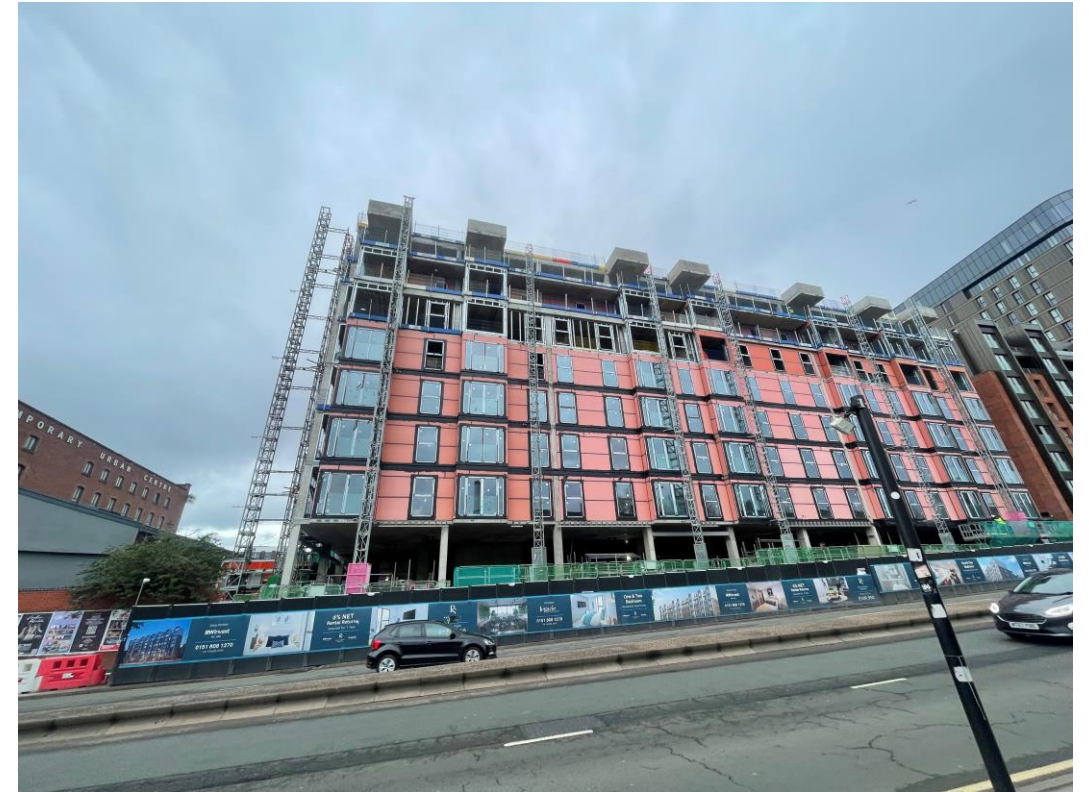
Block D Section A – Viewed from Greenland Street

Sub-Structure & Super-Structure Progress

MARCH 2023



Block D Section B – Viewed from Parliament Street



Block D Section B – Viewed from Parliament Street

Sub-Structure & Super-Structure Progress

MARCH 2023



Block D Section B – Viewed from Greenland Street



Block D Section A – Viewed from Site Compound

Sub-Structure & Super-Structure Progress

MARCH 2023



Block D Section A – SFS & Weatherboarding Installation



Block D Section B – SFS & Weatherboarding Installation

Sub-Structure & Super-Structure Progress

MARCH 2023



Block D Section A – SFS Installation



Block D Section C – SFS & Weatherboarding Installation

Sub-Structure & Super-Structure Progress

MARCH 2023



Block D Section A – SFS Installation



Block D Section C – Glazed balustrade installation

Sub-Structure & Super-Structure Progress

MARCH 2023



Block D Section A – Window units



Block D Section B – Viewed from Parliament Street

Sub-Structure & Super-Structure Progress

MARCH 2023



Block D – Podium



Block D Section A – Masonry Supports

Sub-Structure & Super-Structure Progress

MARCH 2023



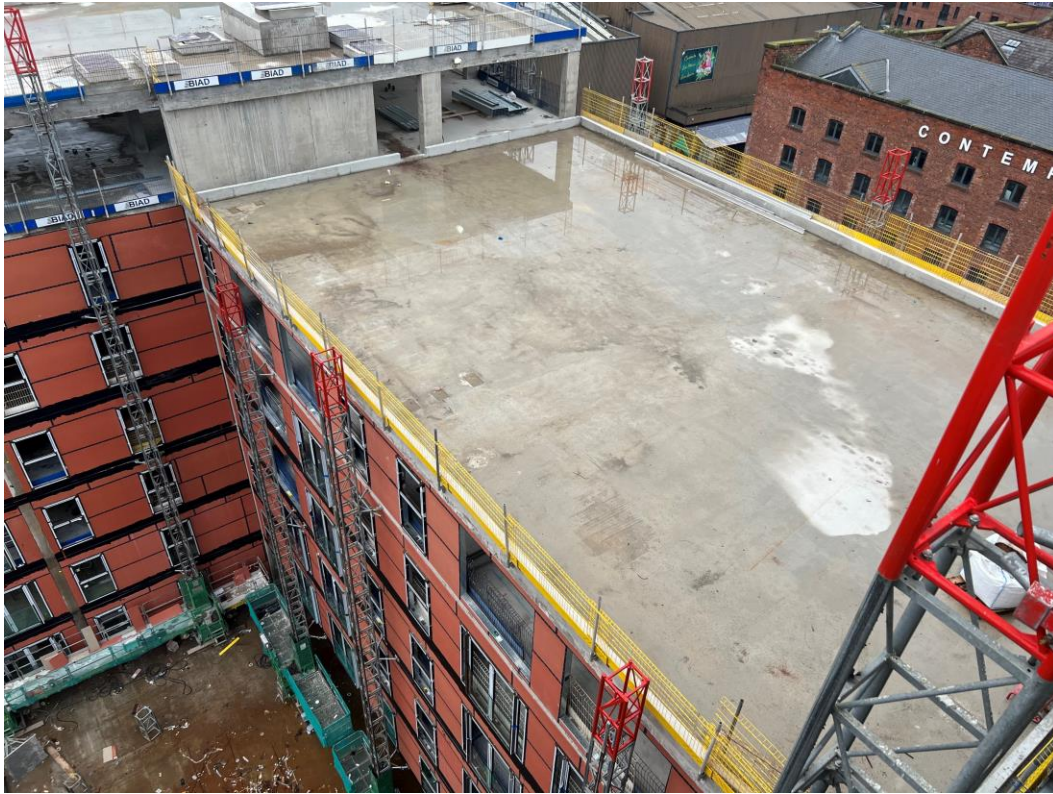
Block D Section A – Masonry Supports



Block D Section A – Masonry Supports

Sub-Structure & Super-Structure Progress

MARCH 2023



Block D Section C – Roof



Block D Section B – Roof

Sub-Structure & Super-Structure Progress

MARCH 2023



Block D Section B – Roof



Block D Section A – Roof

Sub-Structure & Super-Structure Progress

MARCH 2023



Block D Section A – Roof works



Block D Section B – Roof works

Sub-Structure & Super-Structure Progress

MARCH 2023



Concrete upstand in place



Section C - Concrete upstand in place for curtain walling

Sub-Structure & Super-Structure Progress

MARCH 2023



Ground floor blockwork lift shaft



Ground floor blockwork wall

Sub-Structure & Super-Structure Progress

MARCH 2023



Ground floor blockwork wall



Ground floor blockwork wall

Sub-Structure & Super-Structure Progress

MARCH 2023



Substation brickwork walls



Substation substructure brickwork

Sub-Structure & Super-Structure Progress

MARCH 2023



Ground floor blockwork walls



Ground floor brickwork walls

Sub-Structure & Super-Structure Progress

MARCH 2023



Ground floor insulated cavity wall



Ground floor brickwork walls

Sub-Structure & Super-Structure Progress

MARCH 2023



Ground floor insulated cavity wall



Ground floor brickwork walls

Internal Fit-out Block 'D'

Parliament Square, Liverpool
New Build Development

BLOCK D

Internal Fit-out

Construction Progress

MARCH 2023

Core drilling for services	0% complete
Riser installation	0% complete
Lift installation	0% complete
Above ground drainage	86% complete
Partition walls installation	23% complete
Apartment ceiling installation	32% complete
Plaster finishes walls and ceilings	0% complete
1st fix electrical	27% complete
1st fix plumbing and heating	59% complete
Kitchen units and appliances	0% complete
Doorframes	0% complete
Skirting and architrave	0% complete
Bathroom sanitary fittings	0% complete
Wall and floor tiling	0% complete
Carpet and floor finishes	0% complete
Doors and ironmongery	0% complete
Decorations	0% complete
Second fix electrical	0% complete
Second fix plumbing and heating	0% complete
General fixtures and fittings	0% complete

Internal Fit-out Progress

MARCH 2023



Blockwork wall



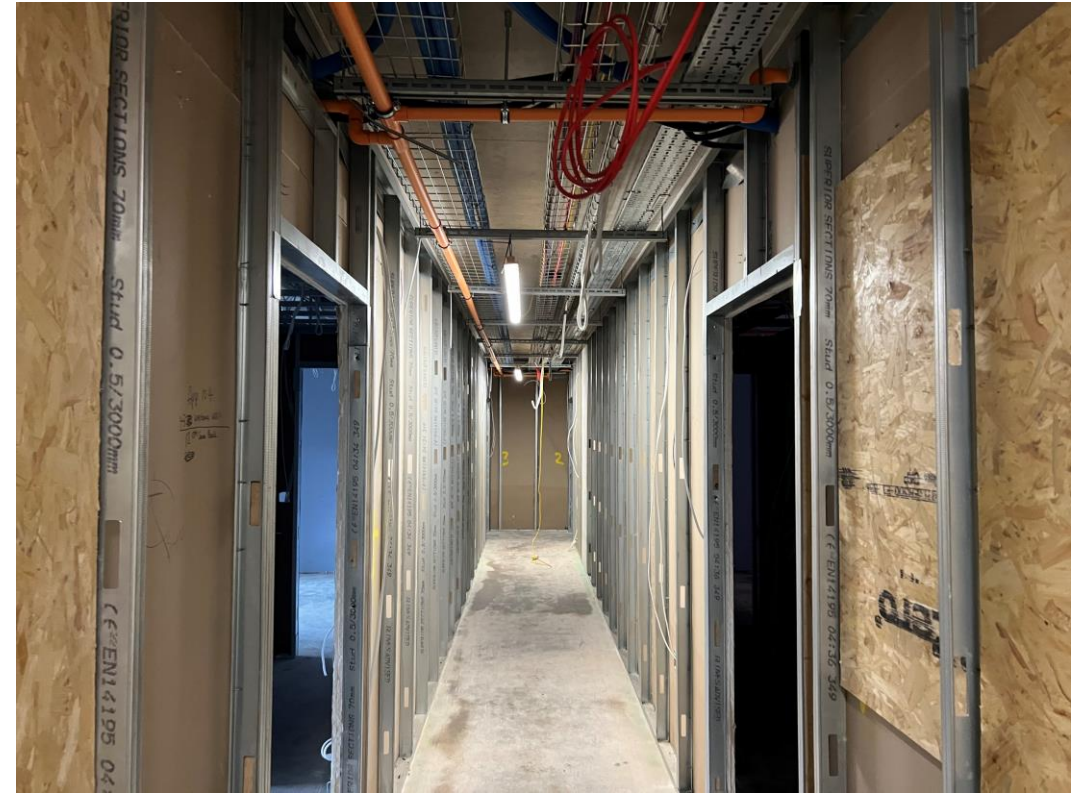
Metal partition frame work installation commenced

Internal Fit-out Progress

MARCH 2023



Metal partition frame work installation commenced



First side partition boarding ongoing

Internal Fit-out Progress

MARCH 2023



Sprinkler system pipe work installed



First side partition boarding ongoing

Internal Fit-out Progress

MARCH 2023



1st Fix electrical installation commenced



First side partition boarding ongoing

Internal Fit-out Progress

MARCH 2023



Partitions installation ongoing



First side partition boarding ongoing

Internal Fit-out Progress

MARCH 2023



1st Fix electrical lighting installation commenced



Metal ceiling grid installation commenced

Internal Fit-out Progress

MARCH 2023



1st Fix electrical lighting installation commenced



1st Fix electrical installation commenced

Internal Fit-out Progress

MARCH 2023



Metal IPS installation commenced



Apartment drainage

Internal Fit-out Progress

MARCH 2023



1st Fix electrical installation commenced



First side partition boarding ongoing

Internal Fit-out Progress

MARCH 2023



Metal IPS installation commenced



Window installation ongoing

Internal Fit-out Progress

MARCH 2023



1st Fix Mechanical ducting ventilation



1st Fix Mechanical ducting ventilation

Internal Fit-out Progress

MARCH 2023



General site activity



Above ground drainage

Internal Fit-out Progress

MARCH 2023



General site activity



Sprinkler system pipe work installed

Internal Fit-out Progress

MARCH 2023



1st Fix electrical installation commenced



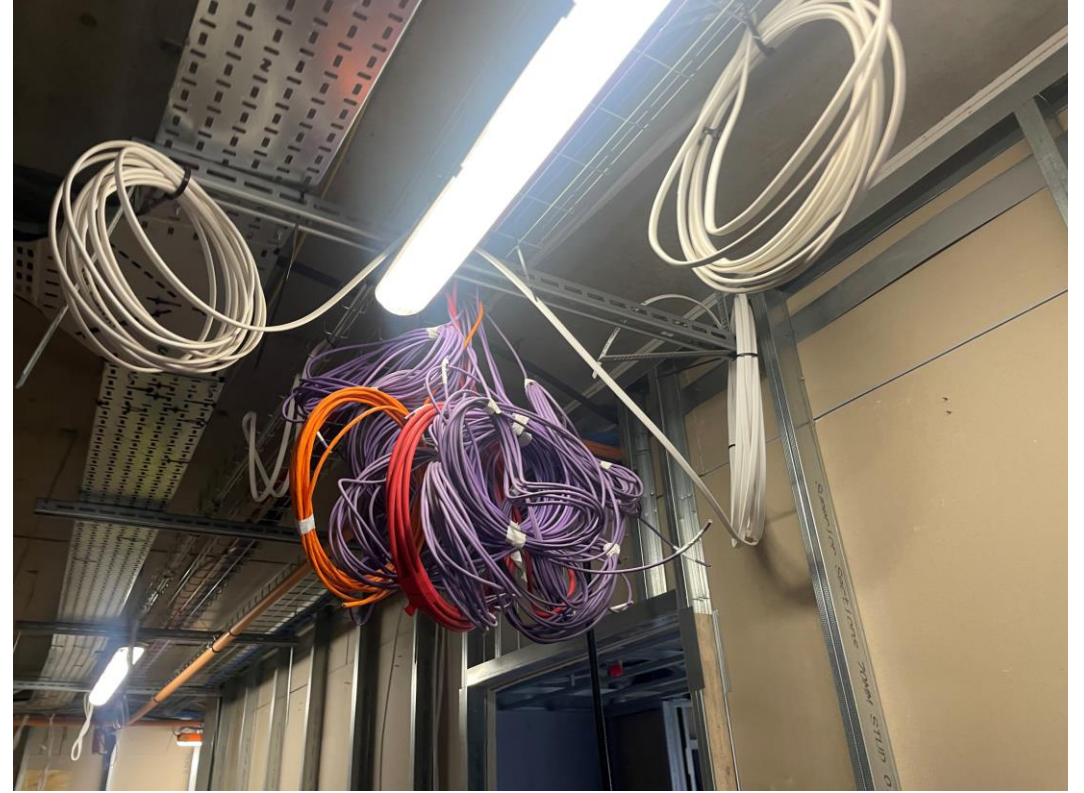
1st Fix Mechanical ducting ventilation

Internal Fit-out Progress

MARCH 2023



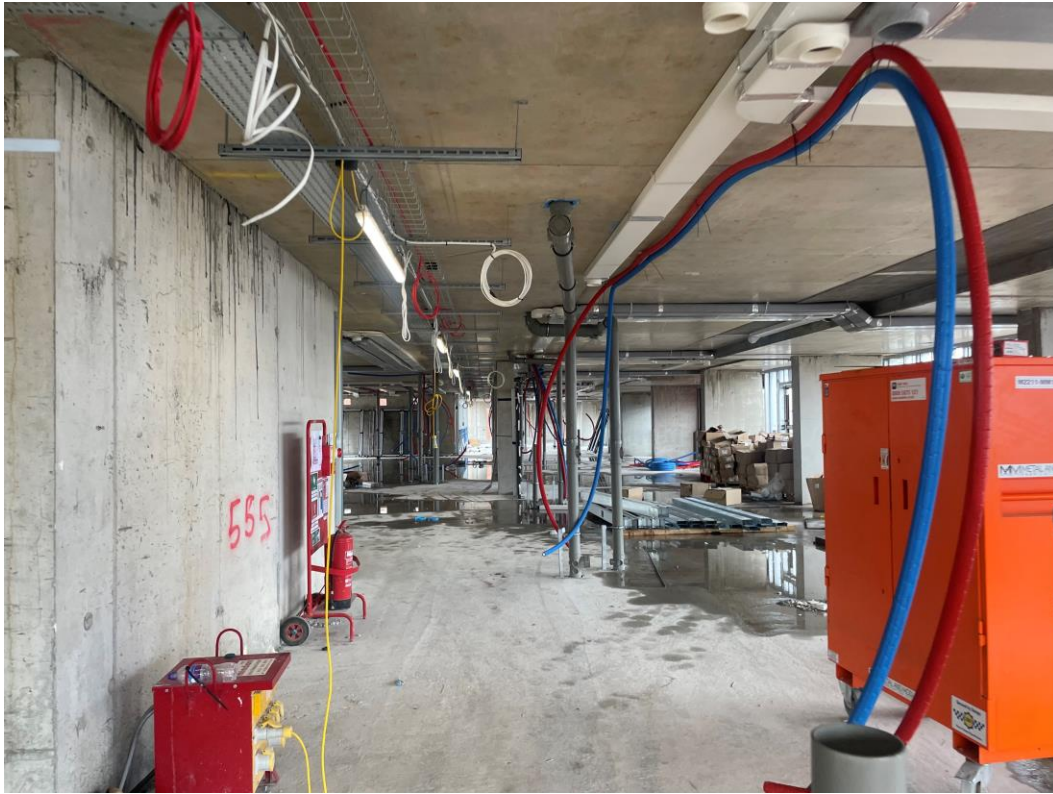
Sprinkler system installation commenced



1st Fix electrical & data installation commenced

Internal Fit-out Progress

MARCH 2023



1st Fix water distribution to apartments



1st Fix water distribution to apartments

Internal Fit-out Progress

MARCH 2023



Glazing units on site for installation



Window frames on site for installation

Internal Fit-out Progress

MARCH 2023



Masonry supports on site for installation



Facing brick stored

Internal Fit-out Progress

MARCH 2023



Masonry supports on site for installation



Masonry blockwork on site for installation

TO FIND OUT MORE ABOUT

Parliament Square, Liverpool

PLEASE CONTACT

legacie

WWW.LEGACIE.CO.UK

By Appointment Only
Unit 4 Connect Business Village
Liverpool, L5 9PR
+44 (0) 151 207 9990