

legacie



Parliament Square
Block 'D'
Investors Report

IR21 February 2023

Parliament Square – Phase 1 Block D

97 Luxury Apartments



Land at corner of Upper Parliament Street & Great St George Street, Liverpool L1

Schedule of Accommodation Block 'D'

Basement

- Car parking
- Sub-Station
- Plant

Ground Floor

- Retail units
- Refuse store
- Hard and soft landscaping

Floors 1 - 11

- 31 no. Studio Apartments
- 22no. 1 Bedroom Apartments
- 44 no. 2 Bedroom Apartments

New Build Two Phase Development to Create Residential Apartments Retail Units & Basement Parking

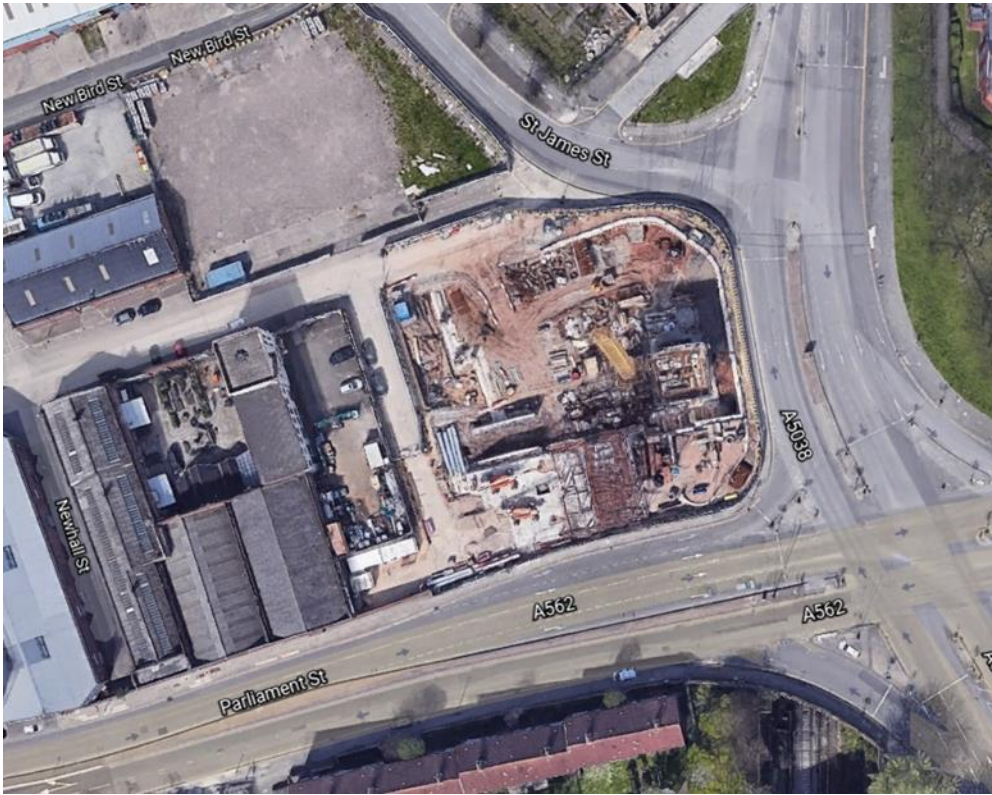


Land at corner of Upper Parliament Street & Great St George Street, Liverpool L1

The eleven storey new build development generally comprises:

- Demolition of adjoining structures and perimeter walls
- Site clearance and levelling
- Site investigations and trial holes
- Excavation and formation of new foundations
- Below and above ground drainage
- New ground supported and part suspended concrete floor slab
- Eighteen storey steel frame structure
- External clad and glazed envelope
- Suspended metal deck and concrete floors
- Flat roof structures and finishes
- Aluminium curtain walling, external windows and doors and shopfronts
- External balconies and balustrades
- Internal sub-division of retail units and apartments with non-loadbearing block and stud partitions
- Installation of plumbing services and mechanical services
- Installation of electrical services
- Installation of new lift car access
- Installation of kitchen and sanitary fittings
- New internal finishes, joinery fittings and decorations

Site Location



Aerial View of the site prior to demolition



Aerial view of the site location of Parliament Square

Building Structure

Parliament Square, Liverpool
New Build Development

Sub-Structure & Super-Structure Progress

FEBRUARY 2023

Site investigations	100% complete
Site compound and temporary supplies	100% complete
Demolition and site clearance	100% complete
Ground infill and site levelling	100% complete
Piling foundations	100% complete
Retaining walls, concrete beam foundations	100% complete
Basement slab construction	100% complete
Ground floor slab construction	100% complete
Concrete deck floor construction to upper floors	100% complete
Lift and staircase core concrete structure	100% complete
Concrete frame structure	100% complete
Internal staircase structure	100% complete
Sub-structure masonry walls	90% complete
Structural framework forming external walls	95% complete
Scaffolding & mast climber access	100% complete
Flat roof covering including balconies	0% complete
Weatherboarding	50% complete
External windows / doors & curtain walling	46% complete
External wall cladding and insulation	0% complete

Sub-Structure & Super-Structure Progress

FEBRUARY 2023



Block D Section A – Viewed from Greenland Street



Block D Section A – Viewed from Greenland Street

Sub-Structure & Super-Structure Progress

FEBRUARY 2023



Block D Section B – Viewed from Section A



Block D Section B – Viewed from Parliament Street

Sub-Structure & Super-Structure Progress

FEBRUARY 2023



Block D Section A – Viewed from Greenland Street



Block D Section B – Weatherboarding installation ongoing

Sub-Structure & Super-Structure Progress

FEBRUARY 2023



Block D – Crane in operation



Block D Section A & C – Viewed from Section B

Sub-Structure & Super-Structure Progress

FEBRUARY 2023



Block D Section A – Viewed from Section B



Block D Section B – Viewed from Section C

Sub-Structure & Super-Structure Progress

FEBRUARY 2023



Block D Section B – Glazed units installed



Block D Section B – Glazed balustrade installation ongoing

Sub-Structure & Super-Structure Progress

FEBRUARY 2023



Block D Section B – Viewed from Section A



Block D Section C – General site activity

Sub-Structure & Super-Structure Progress

FEBRUARY 2023



External windows installed



SFS Installation nearing completion

Sub-Structure & Super-Structure Progress

FEBRUARY 2023



Block D Section B – Formation of concrete upstand



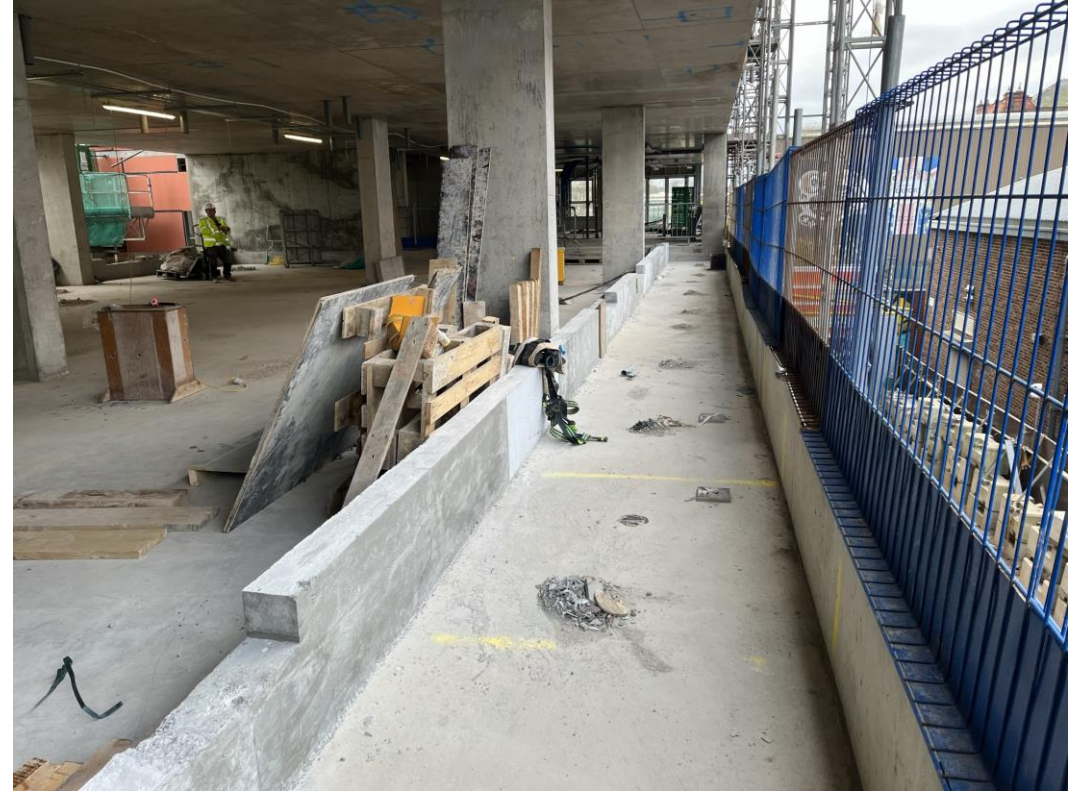
Block D Section B – Formation of concrete upstand

Sub-Structure & Super-Structure Progress

FEBRUARY 2023



Openings for lift shaft



Formation of concrete upstand

Sub-Structure & Super-Structure Progress

FEBRUARY 2023



Setting out of SFS



Interface between window and SFS

Sub-Structure & Super-Structure Progress

FEBRUARY 2023



Interface between window and SFS



Structural support for curtain wall installation

Internal Fit-out Block 'D'

Parliament Square, Liverpool
New Build Development

BLOCK D

Internal Fit-out

Construction Progress

FEBRUARY 2023

Core drilling for services	0% complete
Riser installation	0% complete
Lift installation	0% complete
Above ground drainage	68% complete
Partition walls installation	13% complete
Apartment ceiling installation	5% complete
Plaster finishes walls and ceilings	0% complete
1st fix electrical	0% complete
1st fix plumbing and heating	0% complete
Kitchen units and appliances	0% complete
Doorframes	0% complete
Skirting and architrave	0% complete
Bathroom sanitary fittings	0% complete
Wall and floor tiling	0% complete
Carpet and floor finishes	0% complete
Doors and ironmongery	0% complete
Decorations	0% complete
Second fix electrical	0% complete
Second fix plumbing and heating	0% complete
General fixtures and fittings	0% complete

Internal Fit-out Progress

FEBRUARY 2023



Block D Section A – General site activity



Block D Section A – Stair core One

Internal Fit-out Progress

FEBRUARY 2023



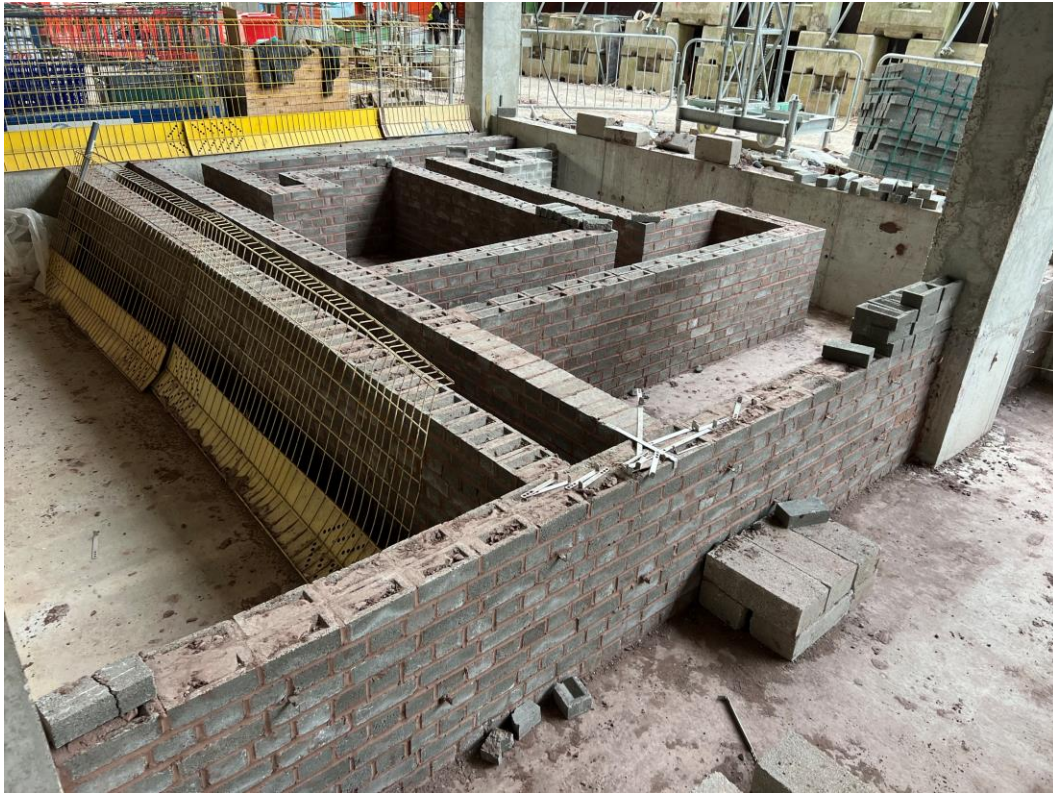
Cavity wall insulation



Ground floor blockwork walls

Internal Fit-out Progress

FEBRUARY 2023



Substation substructure brickwork



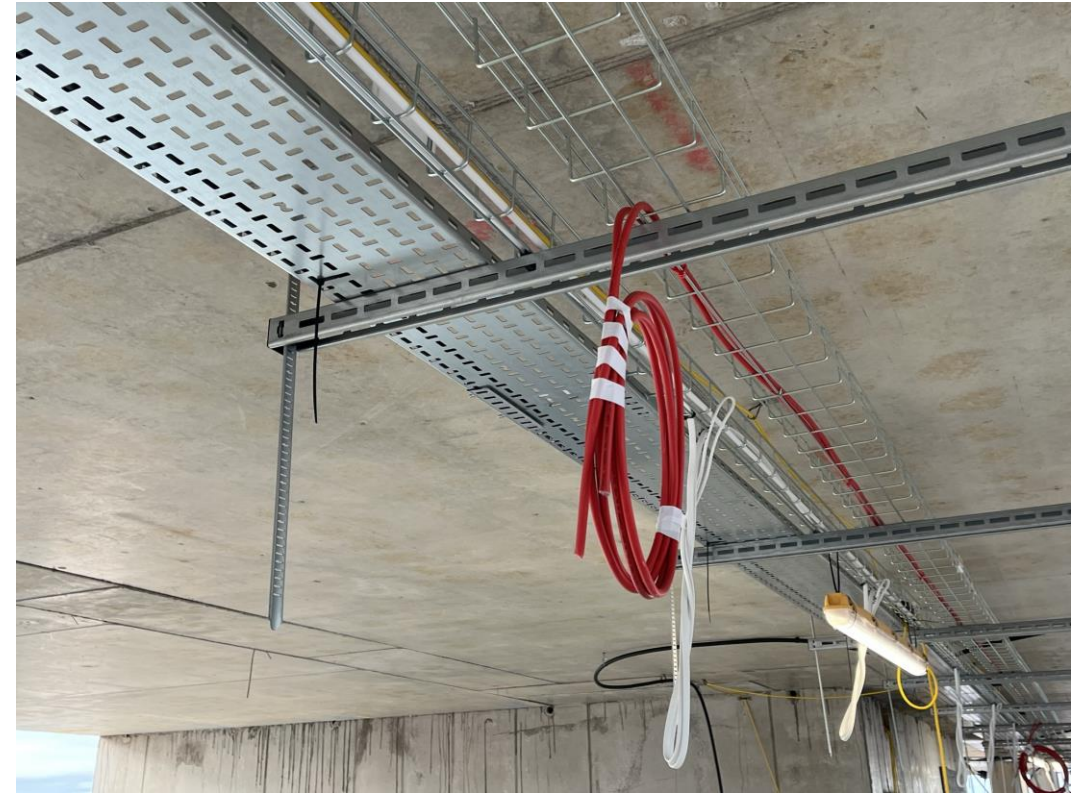
Ground floor blockwork walls

Internal Fit-out Progress

FEBRUARY 2023



Electrical containment in place



Fire alarm wiring in place

Internal Fit-out Progress

FEBRUARY 2023



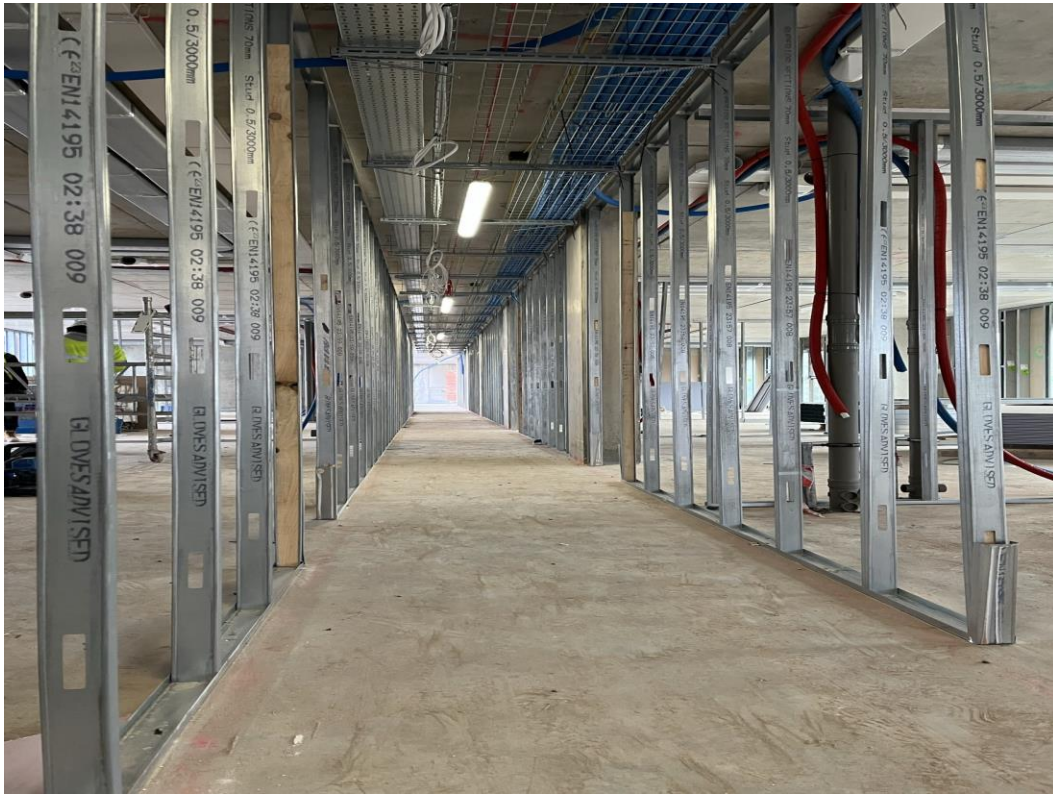
Ground Floor - Reinforcement in place for concrete slab pour



Ground floor blockwork walls

Internal Fit-out Progress

FEBRUARY 2023



Metal partition framework installation commenced



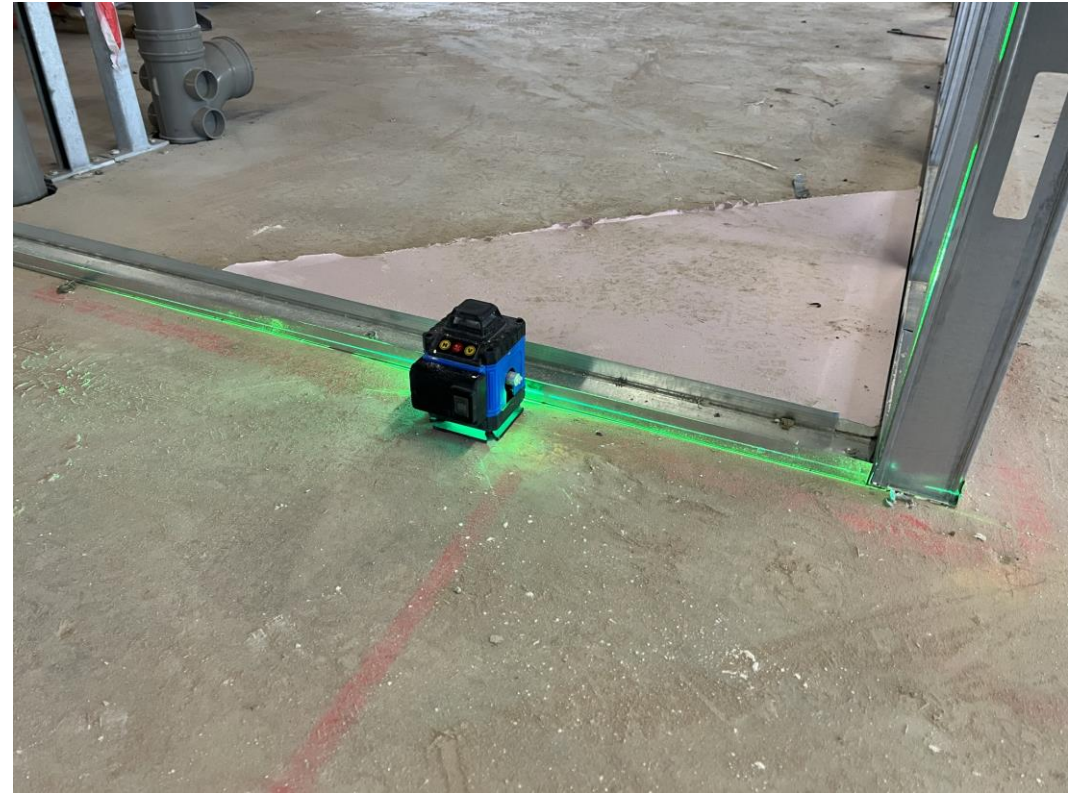
Suspended ceiling installation commenced

Internal Fit-out Progress

FEBRUARY 2023



Pattress for doorframe installation



Setting out of partitions ongoing

Internal Fit-out Progress

FEBRUARY 2023



First side partition boarding commenced



First side partition boarding commenced

Internal Fit-out Progress

FEBRUARY 2023



Formation of apartments commenced



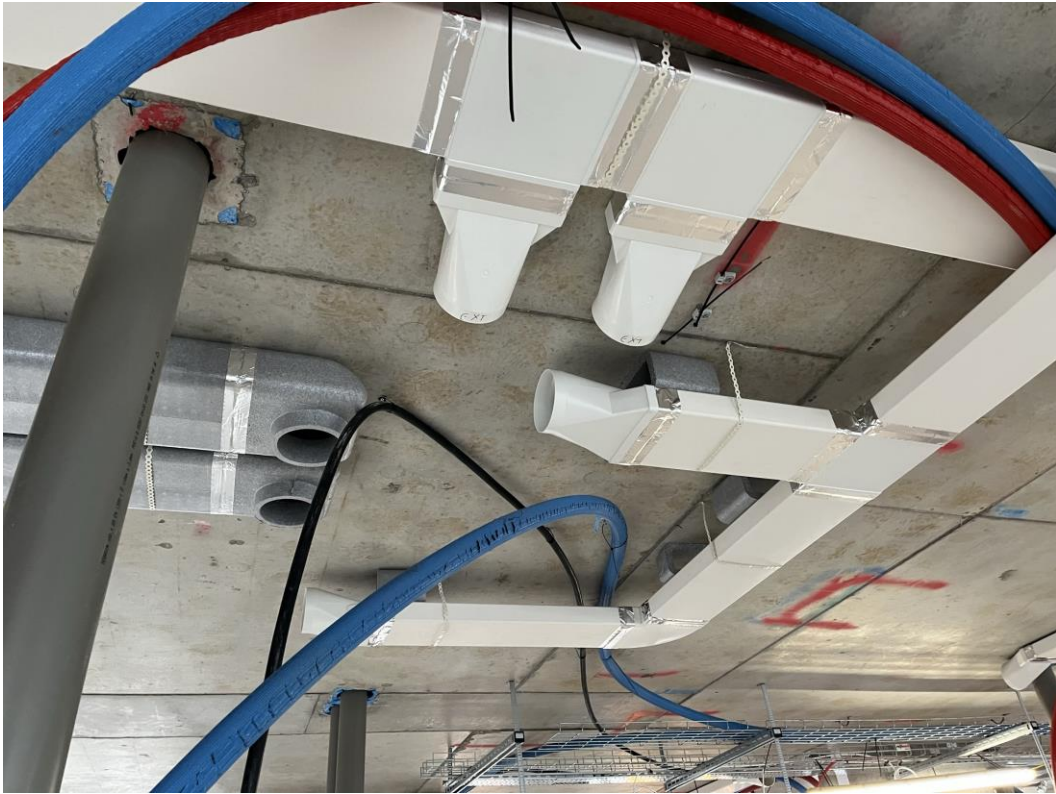
Formation of apartments commenced

Internal Fit-out Progress

FEBRUARY 2023



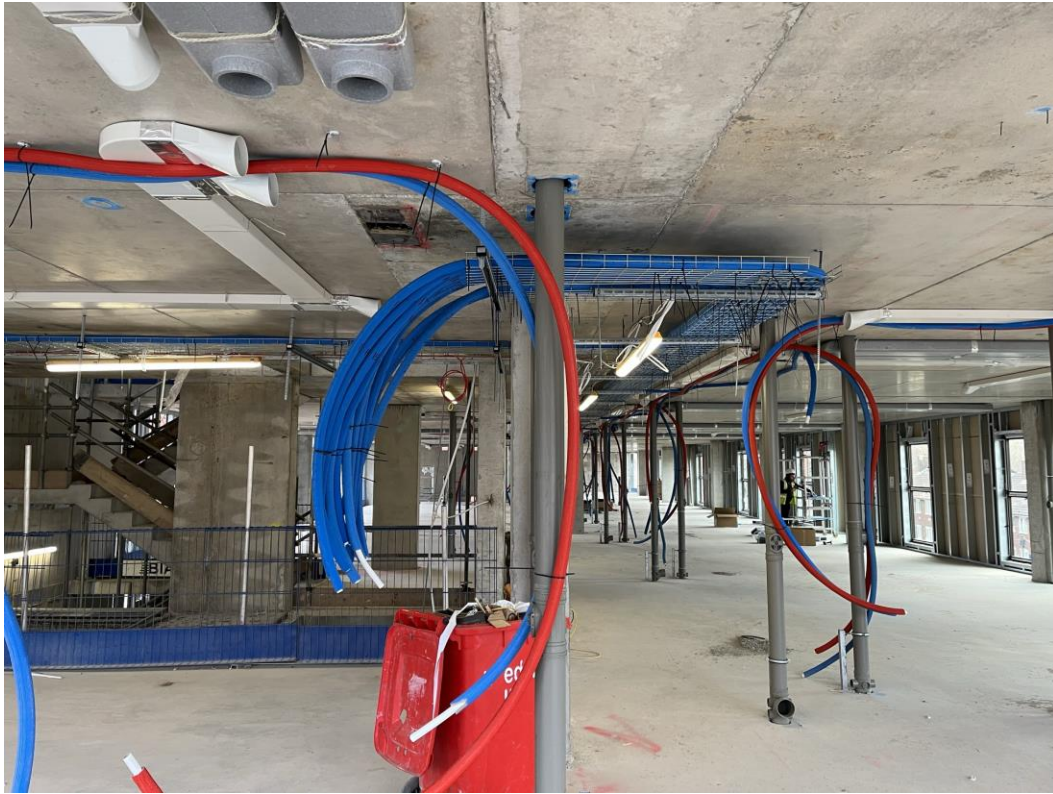
Block D Section A – Mechanical ductwork installed



Block D Section A – Mechanical ductwork installed

Internal Fit-out Progress

FEBRUARY 2023



Block D Section B – Water feed installation



Block D Section A – Above ground drainage

Internal Fit-out Progress

FEBRUARY 2023



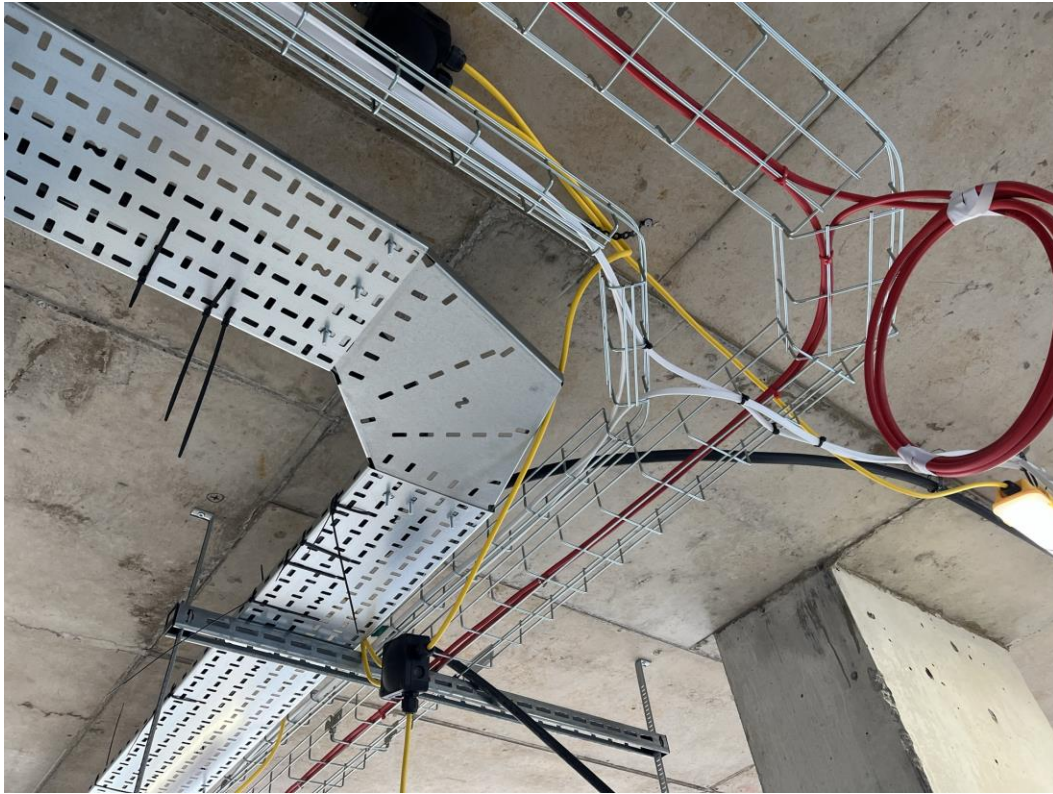
Water distribution to apartments



Water distribution to apartments

Internal Fit-out Progress

FEBRUARY 2023



Electrical containment in place



Window units

Internal Fit-out Progress

FEBRUARY 2023



Cold water distribution pipework



Hot water distribution pipework

Internal Fit-out Progress

FEBRUARY 2023



Electrical mains distribution in place



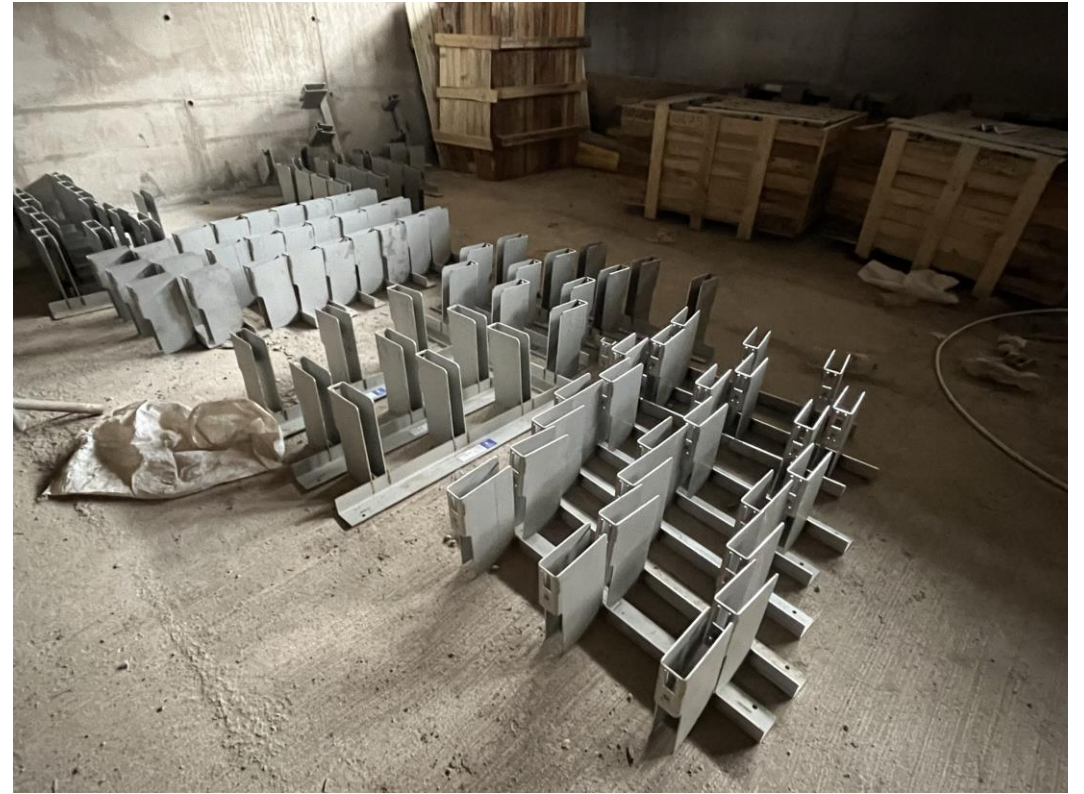
Setting out of first second electrical underpass

Internal Fit-out Progress

FEBRUARY 2023



Metal partitions



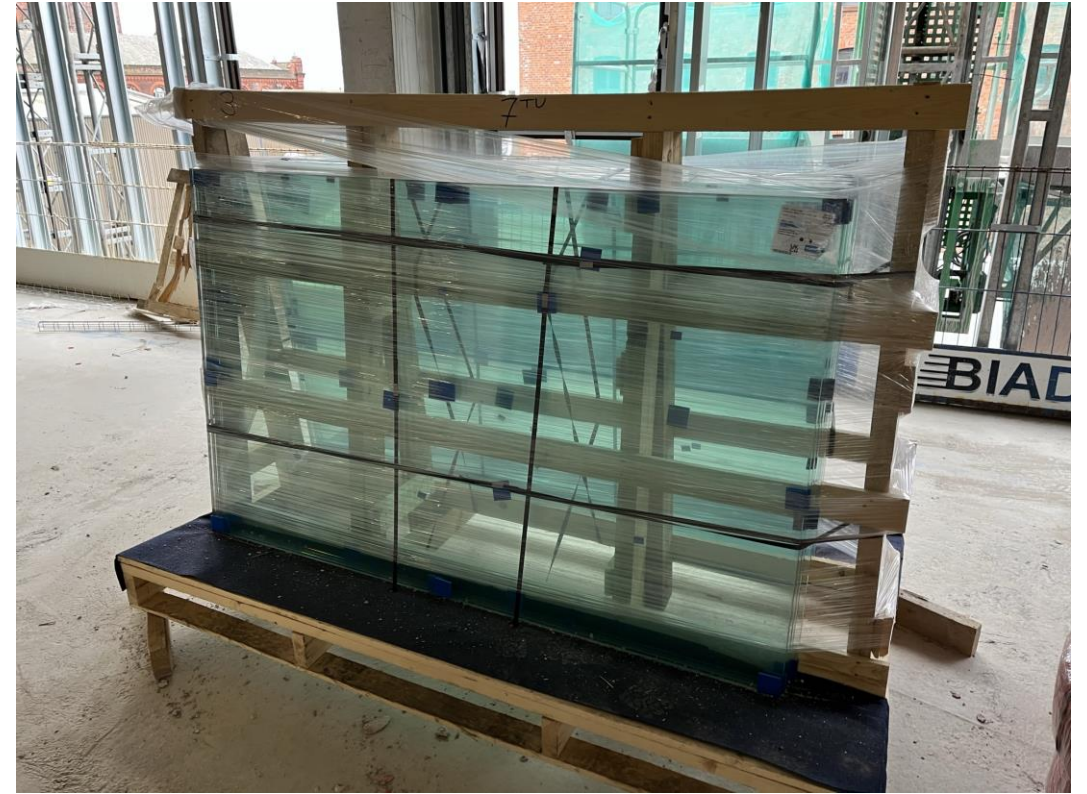
Masonry supports

Internal Fit-out Progress

FEBRUARY 2023



Plasterboard



Glazing units

Internal Fit-out Progress

FEBRUARY 2023



Bricks



Concrete block

Internal Fit-out Progress

FEBRUARY 2023



Bricks



Plant in use

Internal Fit-out Progress

FEBRUARY 2023



Temporary lift shaft gates installed



Plant in use

Internal Fit-out Progress

FEBRUARY 2023



Mast Climber



Mast Climber

TO FIND OUT MORE ABOUT

Parliament Square, Liverpool

PLEASE CONTACT

legacie

WWW.LEGACIE.CO.UK

By Appointment Only
Unit 4 Connect Business Village
Liverpool, L5 9PR
+44 (0) 151 207 9990