

legacie



Parliament Square
Block 'B'
Investors Report

IR21 June 2022

Parliament Square – Phase 1 Block B

97 Luxury Apartments



Land at corner of Upper Parliament Street & Great St George Street, Liverpool L1

Schedule of Accommodation Block 'B'

Basement

- Car parking
- Sub-Station
- Plant

Ground Floor

- Retail units
- Refuse store
- Hard and soft landscaping

Floors 1 - 11

- 31 no. Studio Apartments
- 22no. 1 Bedroom Apartments
- 44 no. 2 Bedroom Apartments

New Build Two Phase Development to Create Residential Apartments Retail Units & Basement Parking



Land at corner of Upper Parliament Street & Great St George Street, Liverpool L1

The eleven storey new build development generally comprises:

- Demolition of adjoining structures and perimeter walls
- Site clearance and levelling
- Site investigations and trial holes
- Excavation and formation of new foundations
- Below and above ground drainage
- New ground supported and part suspended concrete floor slab
- Eighteen storey steel frame structure
- External clad and glazed envelope
- Suspended metal deck and concrete floors
- Flat roof structures and finishes
- Aluminium curtain walling, external windows and doors and shopfronts
- External balconies and balustrades
- Internal sub-division of retail units and apartments with non-loadbearing block and stud partitions
- Installation of plumbing services and mechanical services
- Installation of electrical services
- Installation of new lift car access
- Installation of kitchen and sanitary fittings
- New internal finishes, joinery fittings and decorations

Building Structure

Parliament Square, Liverpool
New Build Development

Sub-Structure & Super-Structure Construction Progress

J U N E 2 0 2 2

Floor slab construction	100% complete
Steel frame structure	100% complete
Upper suspended steel floor structure	100% complete
Concrete pour upper suspended floor structure	100% complete
Internal staircase structure	100% complete
Sub-structure Masonry wall	95% complete
Fire coating steel framework	100% complete
Structural framework forming external walls	98% complete
Flat roof structure and covering	100% complete
Podium steel structure	100% complete
Podium concrete poured	100% complete
Mast climber installation	100% complete
Weatherboarding	98% complete
Brickwork to elevations	70% complete
Cladding installation	75% complete
Window installation	97% complete

Sub-Structure & Super-Structure Progress

JUNE 2022



Block B – Viewed from St James Street



Block B – Viewed from Crump Street

Sub-Structure & Super-Structure Progress

JUNE 2022



Block B – Viewed from Great George Street



Block B – Viewed from St James Street

Sub-Structure & Super-Structure Progress

JUNE 2022



Block B – Viewed from Podium



Block B – Viewed from Block C

Sub-Structure & Super-Structure Progress

JUNE 2022



Block B – Viewed from Crump Street



Block B – Viewed from Great George Street

Sub-Structure & Super-Structure Progress

JUNE 2022



Podium build-up installation



Podium build-up installation

Sub-Structure & Super-Structure Progress

JUNE 2022



Planter installation ongoing



Podium build-up installation ongoing

Sub-Structure & Super-Structure Progress

JUNE 2022



Cladding installation ongoing



Cladding installation ongoing

Sub-Structure & Super-Structure Progress

JUNE 2022



Terrace balustrades installed



Terraces ready for paving

Sub-Structure & Super-Structure Progress

JUNE 2022



Cladding installation



Cladding installation ongoing

Sub-Structure & Super-Structure Progress

JUNE 2022



Solar panels installed



Block B – Viewed from Block C

Internal Fit-out Block 'B'

Parliament Square, Liverpool
New Build Development

BLOCK B

Internal Fit-out

Construction Progress

JUNE 2022

Core drilling for services	100% complete
Riser installation	100% complete
Lift installation	60% complete
Above ground drainage	100% complete
Partition walls installation	96% complete
Apartment ceiling installation	89% complete
Plaster finishes walls and ceilings	82% complete
1st fix electrical	94% complete
1st fix plumbing and heating	94% complete
Kitchen units and appliances	80% complete
Doorframes	81% complete
Skirting and architrave	79% complete
Bathroom sanitary fittings	81% complete
Wall and floor tiling	86% complete
Carpet and floor finishes	74% complete
Doors and ironmongery	78% complete
Decorations	62% complete
2 nd fix electrical	80% complete
2 nd fix plumbing and heating	80% complete
General fixtures and fittings	55% complete

Sub-Structure & Super-Structure Progress

JUNE 2022



Curtain walling installed



Curtain walling installed

Sub-Structure & Super-Structure Progress

JUNE 2022



Masonry wall installed to Commercial Unit



Staircase masonry wall installation ongoing

Sub-Structure & Super-Structure Progress

JUNE 2022



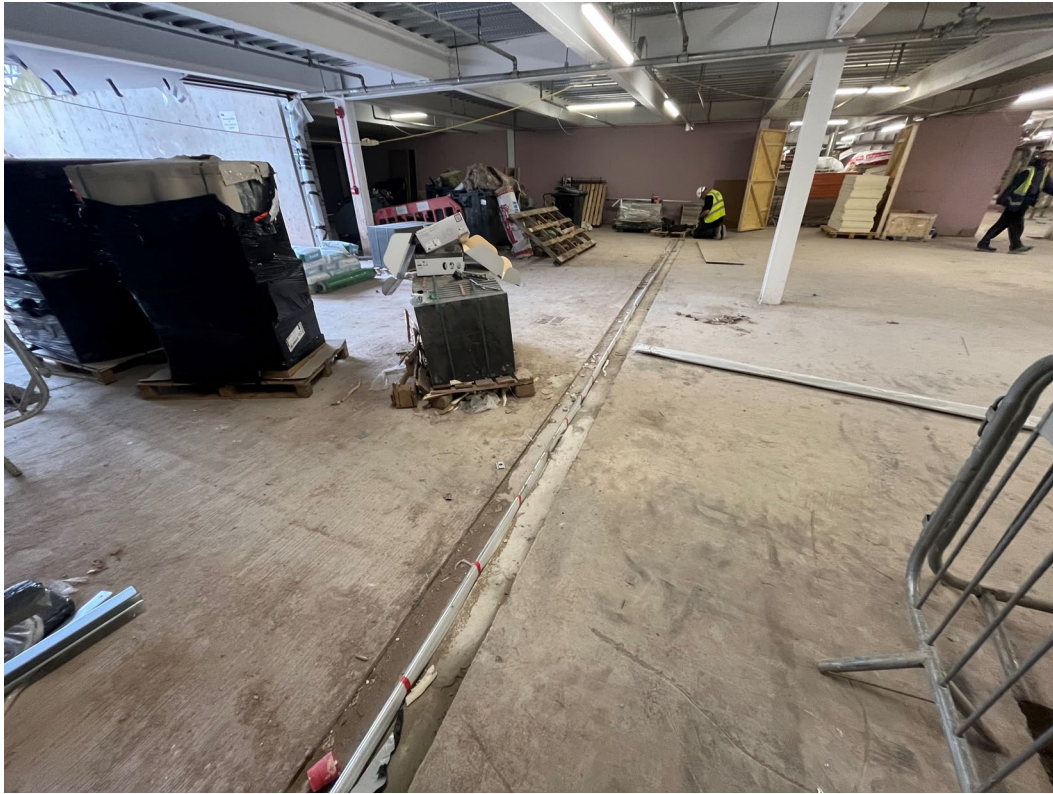
Residential lobby



Water installation to commercial units

Sub-Structure & Super-Structure Progress

JUNE 2022



Basement car park



Water tank installed

Sub-Structure & Super-Structure Progress

JUNE 2022



Metal partition frame to circulation area



Partition insulation installed

Sub-Structure & Super-Structure Progress

JUNE 2022



Apartment door and frame installed



Fire stopping installed to lift opening

Sub-Structure & Super-Structure Progress

JUNE 2022



Lift installation complete



Lift installation complete

Sub-Structure & Super-Structure Progress

JUNE 2022



Circulation areas plastered



Circulation areas plastered

Sub-Structure & Super-Structure Progress

JUNE 2022



Staircase partitions installed



Electrical distribution board installed

Sub-Structure & Super-Structure Progress

JUNE 2022



Partition insulation installed



Partition insulation installed

Sub-Structure & Super-Structure Progress

JUNE 2022



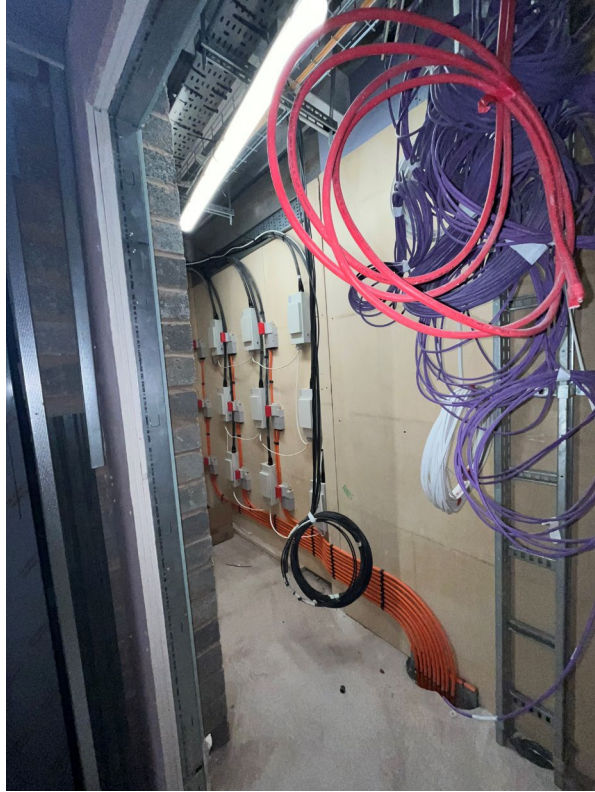
Staircase pattress installed



Staircase balustrade installed

Sub-Structure & Super-Structure Progress

JUNE 2022



Electrical meter cupboard



Electrical installation

Sub-Structure & Super-Structure Progress

JUNE 2022



Staircase pattrass installed



Circulation areas plastered

Sub-Structure & Super-Structure Progress

JUNE 2022



Apartment partition build-up



Wall coverings installed to bedroom

Sub-Structure & Super-Structure Progress

JUNE 2022



Circulation areas plastered



Circulation areas plastered

Sub-Structure & Super-Structure Progress

JUNE 2022



Lift installation complete



Circulation areas boarded

Sub-Structure & Super-Structure Progress

JUNE 2022



Water cylinder installed



Water cylinder installed

Sub-Structure & Super-Structure Progress

JUNE 2022



Bathroom appliances installed



Kitchen installed

Sub-Structure & Super-Structure Progress

JUNE 2022



Kitchen installed



Kitchen installed

Sub-Structure & Super-Structure Progress

JUNE 2022



Laminate flooring installed



Kitchen installed and protected

Sub-Structure & Super-Structure Progress

JUNE 2022



Laminate installed



Laminate installed

Sub-Structure & Super-Structure Progress

JUNE 2022



Wall coverings installed



Apartments doors installed

Sub-Structure & Super-Structure Progress

JUNE 2022



Apartment doors installed



Apartment finishes

Sub-Structure & Super-Structure Progress

JUNE 2022



Kitchen installed



Bathroom light fittings

Sub-Structure & Super-Structure Progress

JUNE 2022



Apartment intercom handset installed



Integrated microwave installed

Sub-Structure & Super-Structure Progress

JUNE 2022



TV bracket installed



Light switch installed

TO FIND OUT MORE ABOUT

Parliament Square, Liverpool

PLEASE CONTACT

legacie

WWW.LEGACIE.CO.UK

By Appointment Only
Unit 4 Connect Business Village
Liverpool, L5 9PR
+44 (0) 151 207 9990