

legacie



Parliament Square Block 'D' Investors Report

IR20 January 2023

Parliament Square – Phase 1 Block D

97 Luxury Apartments



Land at corner of Upper Parliament Street & Great St George Street, Liverpool L1

Schedule of Accommodation Block 'D'

Basement

- Car parking
- Sub-Station
- Plant

Ground Floor

- Retail units
- Refuse store
- Hard and soft landscaping

Floors 1 - 11

- 31 no. Studio Apartments
- 22no. 1 Bedroom Apartments
- 44 no. 2 Bedroom Apartments

New Build Two Phase Development to Create Residential Apartments Retail Units & Basement Parking

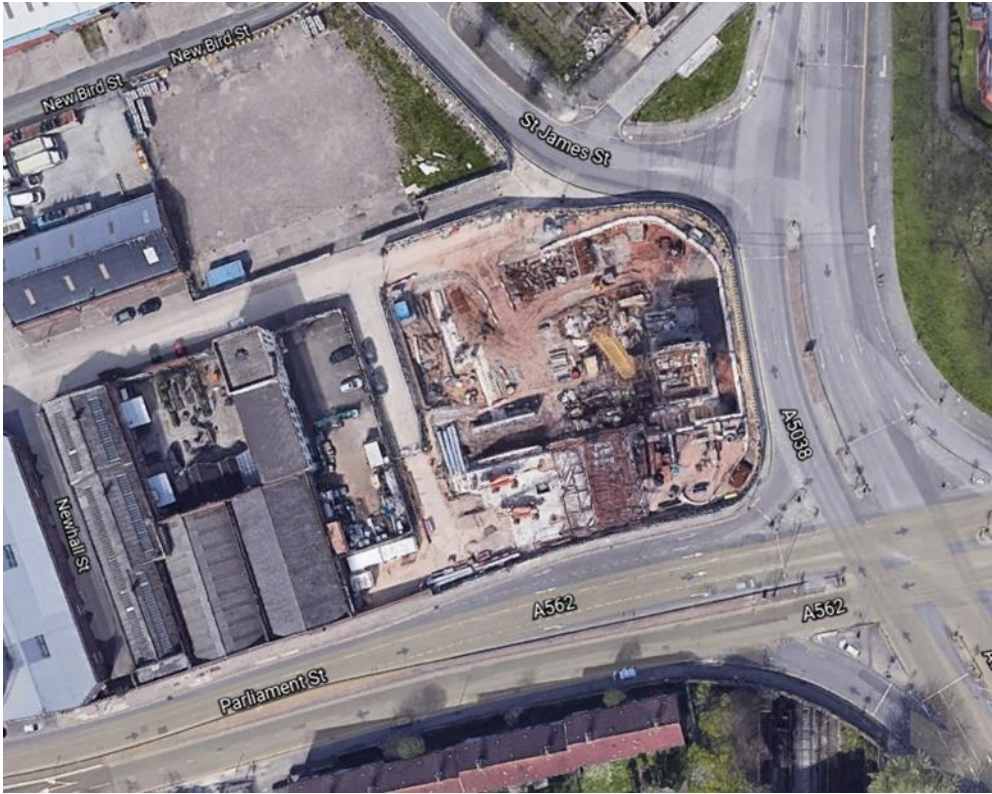


Land at corner of Upper Parliament Street & Great St George Street, Liverpool L1

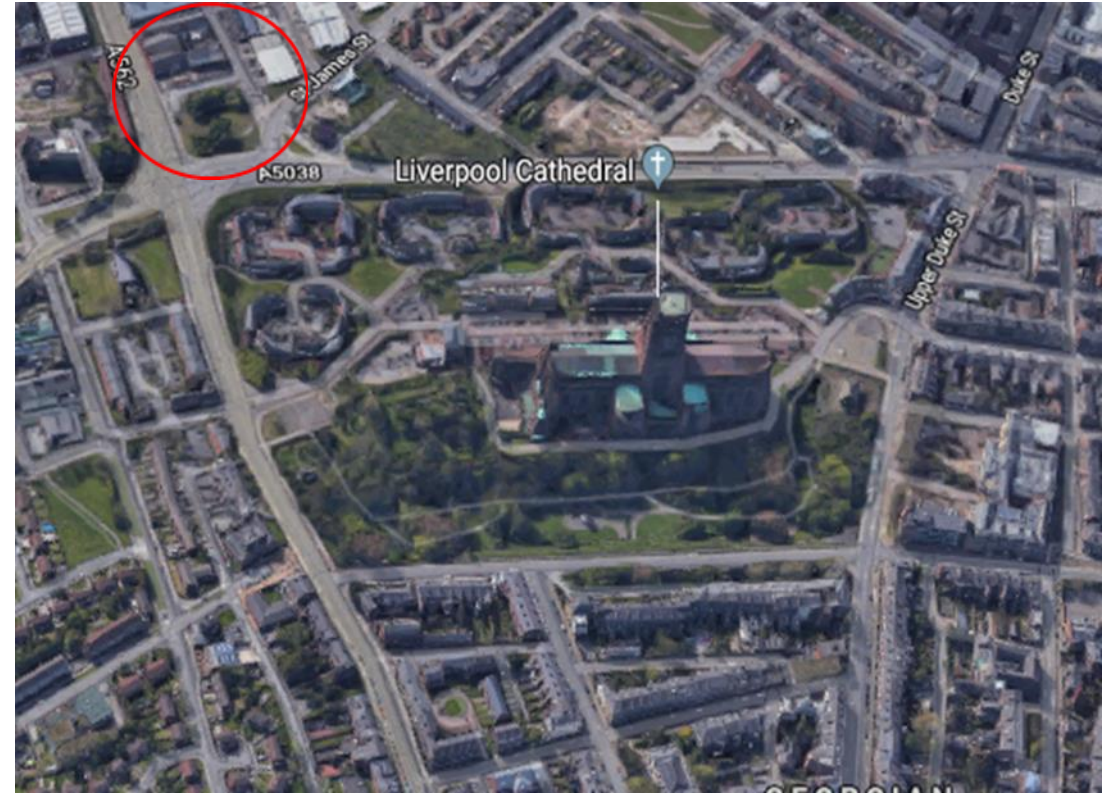
The eleven storey new build development generally comprises:

- Demolition of adjoining structures and perimeter walls
- Site clearance and levelling
- Site investigations and trial holes
- Excavation and formation of new foundations
- Below and above ground drainage
- New ground supported and part suspended concrete floor slab
- Eighteen storey steel frame structure
- External clad and glazed envelope
- Suspended metal deck and concrete floors
- Flat roof structures and finishes
- Aluminium curtain walling, external windows and doors and shopfronts
- External balconies and balustrades
- Internal sub-division of retail units and apartments with non-loadbearing block and stud partitions
- Installation of plumbing services and mechanical services
- Installation of electrical services
- Installation of new lift car access
- Installation of kitchen and sanitary fittings
- New internal finishes, joinery fittings and decorations

Site Location



Aerial View of the site prior to demolition



Aerial view of the site location of Parliament Square

Building Structure

Parliament Square, Liverpool
New Build Development

Sub-Structure & Super-Structure Progress

JANUARY 2023

Site investigations	100% complete
Site compound and temporary supplies	100% complete
Demolition and site clearance	100% complete
Ground infill and site levelling	100% complete
Piling foundations	100% complete
Retaining walls, concrete beam foundations	100% complete
Basement slab construction	100% complete
Ground floor slab construction	100% complete
Concrete deck floor construction to upper floors	100% complete
Lift and staircase core concrete structure	100% complete
Concrete frame structure	100% complete
Internal staircase structure	100% complete
Sub-structure masonry walls	40% complete
Structural framework forming external walls	52% complete
Scaffolding & mast climber access	100% complete
Flat roof covering including balconies	0% complete
Weatherboarding	32% complete
External windows / doors & curtain walling	42% complete
External wall cladding and insulation	0% complete

Sub-Structure & Super-Structure Progress

JANUARY 2023



Block D – Viewed from Greenland Street



Block D Section B – Viewed from Section A

Sub-Structure & Super-Structure Progress

JANUARY 2023



Block D – Viewed from Greenland Street



Block D Section B – Viewed from Crump Street

Sub-Structure & Super-Structure Progress

JANUARY 2023



Block D – Viewed from Section B



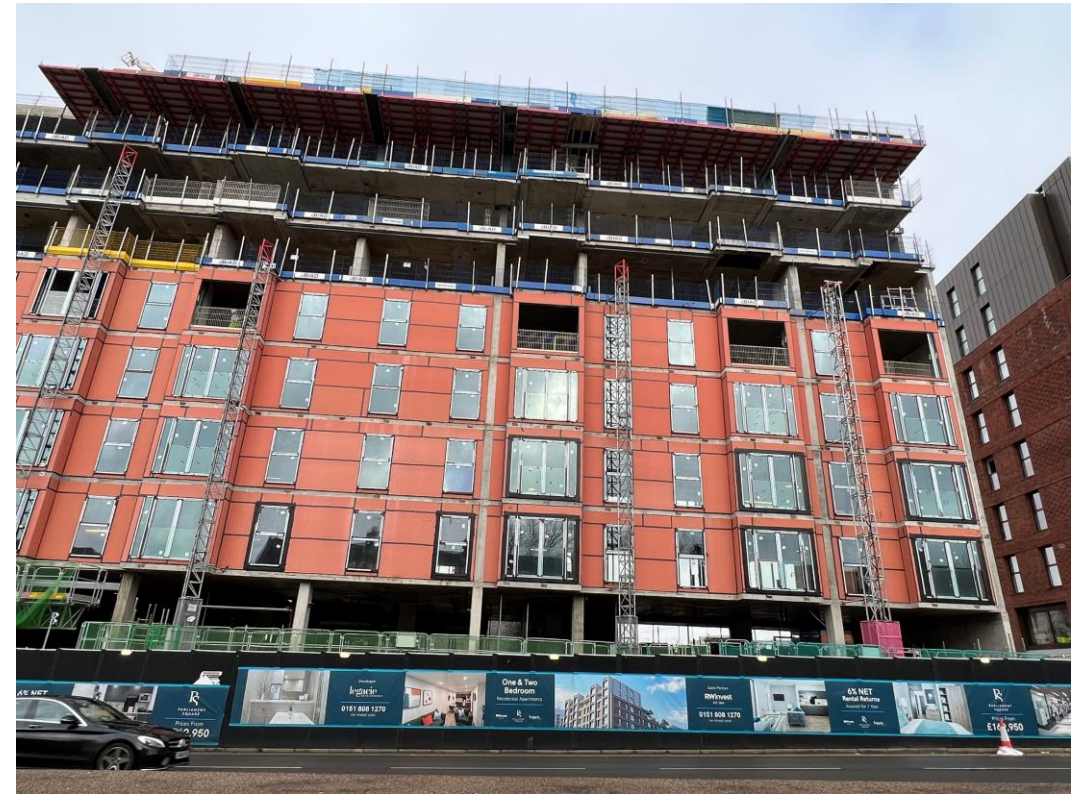
Block D Section B – Viewed from Parliament Street

Sub-Structure & Super-Structure Progress

JANUARY 2023



Block D Section B – Viewed from Parliament Street



Block D Section B – Viewed from Parliament Street

Sub-Structure & Super-Structure Progress

JANUARY 2023



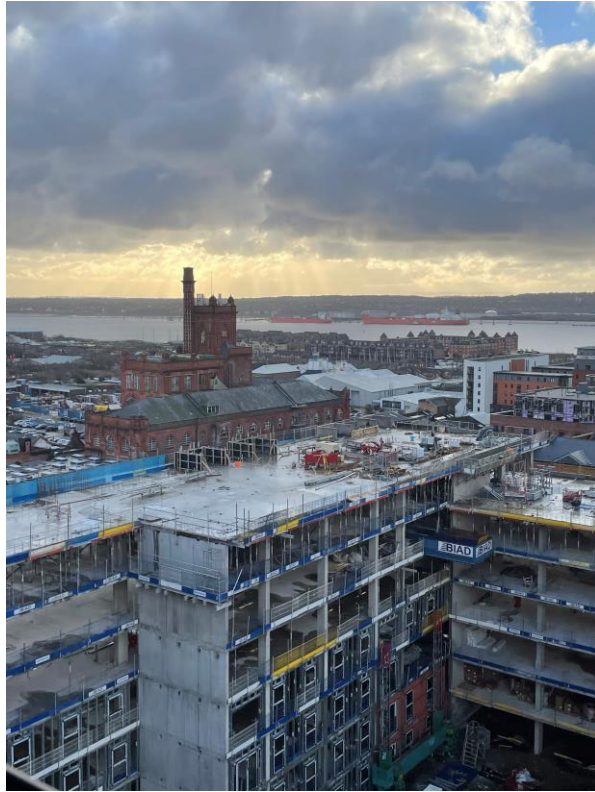
Block D Section B – Viewed from Section A



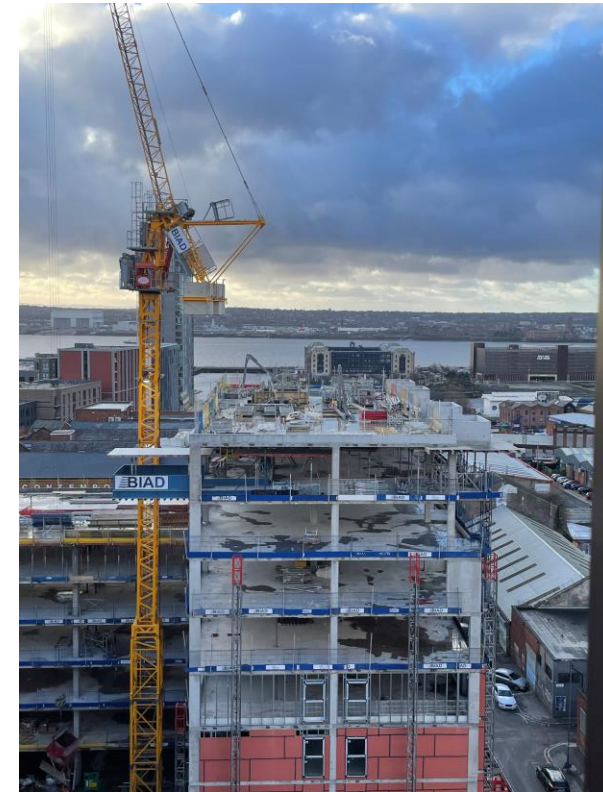
Window & weatherboarding installation ongoing

Sub-Structure & Super-Structure Progress

JANUARY 2023



Block D Section B – Viewed from Block B



Block D Section A – Viewed from Block B

Sub-Structure & Super-Structure Progress

JANUARY 2023



General site activity



Ground Floor blockwork ongoing

Sub-Structure & Super-Structure Progress

JANUARY 2023



Ground floor blockwork walls



Ground floor blockwork walls

Sub-Structure & Super-Structure Progress

JANUARY 2023



Ground floor blockwork walls



Block D Section B – Pre-cast concrete staircase

Sub-Structure & Super-Structure Progress

JANUARY 2023



Block D Section B – Pre-cast concrete staircase



General site activity

Sub-Structure & Super-Structure Progress

JANUARY 2023



Formwork in place for casting of concrete upstand



Reinforcement in place for formation of concrete upstand

Sub-Structure & Super-Structure Progress

JANUARY 2023



Block D Section C – Viewed from Section A



SFS loaded for installation

Sub-Structure & Super-Structure Progress

JANUARY 2023



Concrete frame structure complete



Electrical containment installation ongoing

Sub-Structure & Super-Structure Progress

JANUARY 2023



General site activity



General site activity

Sub-Structure & Super-Structure Progress

JANUARY 2023



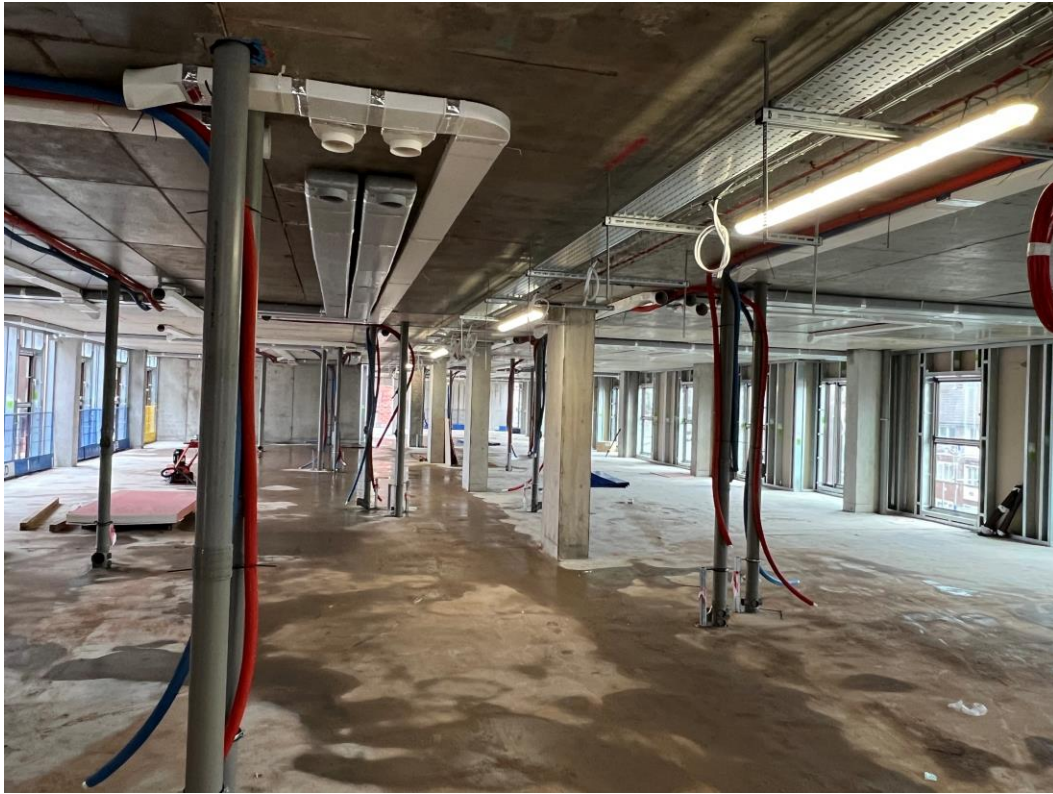
External windows onsite



External windows installed

Sub-Structure & Super-Structure Progress

JANUARY 2023



Block D Section A – Mechanical ductwork installed



Block D Section A – Mechanical ductwork installed

Sub-Structure & Super-Structure Progress

JANUARY 2023



Electrical containment installation ongoing



Block D Section A – Mechanical ductwork installed

Sub-Structure & Super-Structure Progress

JANUARY 2023



Electrical containment installation ongoing



Table formwork in place

Sub-Structure & Super-Structure Progress

JANUARY 2023



General site activity



Table formwork in place

Sub-Structure & Super-Structure Progress

JANUARY 2023



1st Fix M&E commenced to lower floor levels



Block D Section A – Viewed from Section C

Sub-Structure & Super-Structure Progress

JANUARY 2023



Mast climber



Glazing units

Sub-Structure & Super-Structure Progress

JANUARY 2023



Masonry support



Masonry support

Sub-Structure & Super-Structure Progress

JANUARY 2023



Temporary power live



Plant in use

TO FIND OUT MORE ABOUT

Parliament Square, Liverpool

PLEASE CONTACT

legacie

WWW.LEGACIE.CO.UK

By Appointment Only
Unit 4 Connect Business Village
Liverpool, L5 9PR
+44 (0) 151 207 9990