

legacie



Parliament Square Block 'D' Investors Report

IR19 December 2022

Parliament Square – Phase 1 Block D

97 Luxury Apartments



Land at corner of Upper Parliament Street & Great St George Street, Liverpool L1

Schedule of Accommodation Block 'D'

Basement

- Car parking
- Sub-Station
- Plant

Ground Floor

- Retail units
- Refuse store
- Hard and soft landscaping

Floors 1 - 11

- 31 no. Studio Apartments
- 22no. 1 Bedroom Apartments
- 44 no. 2 Bedroom Apartments

New Build Two Phase Development to Create Residential Apartments Retail Units & Basement Parking

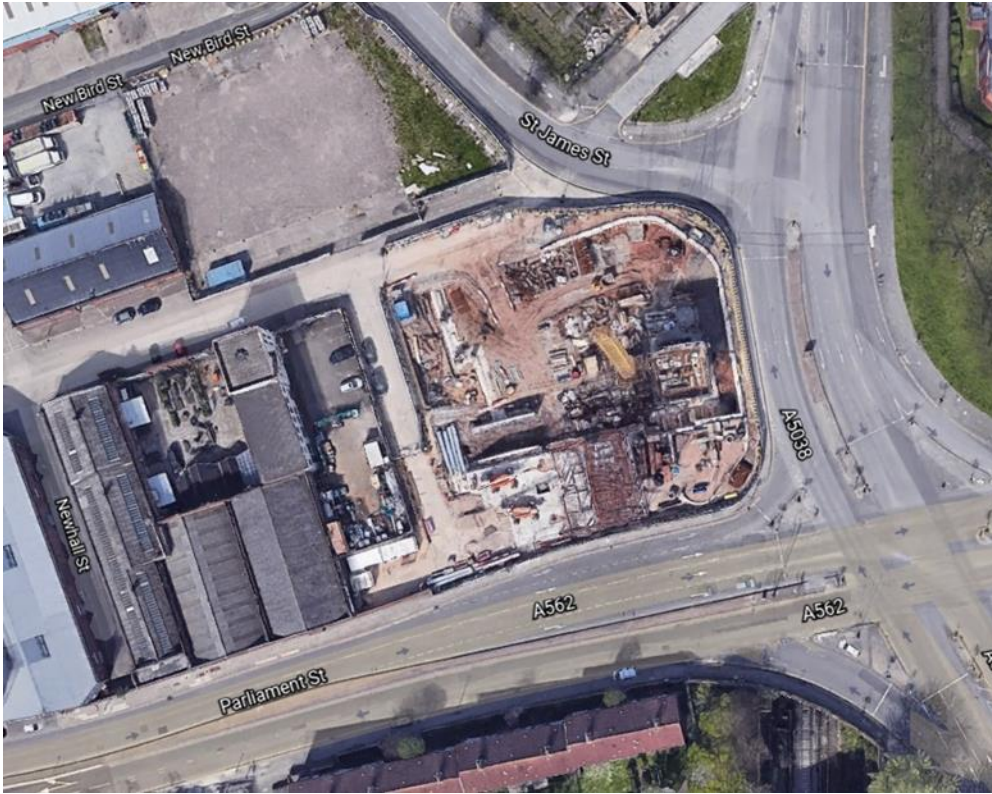


Land at corner of Upper Parliament Street & Great St George Street, Liverpool L1

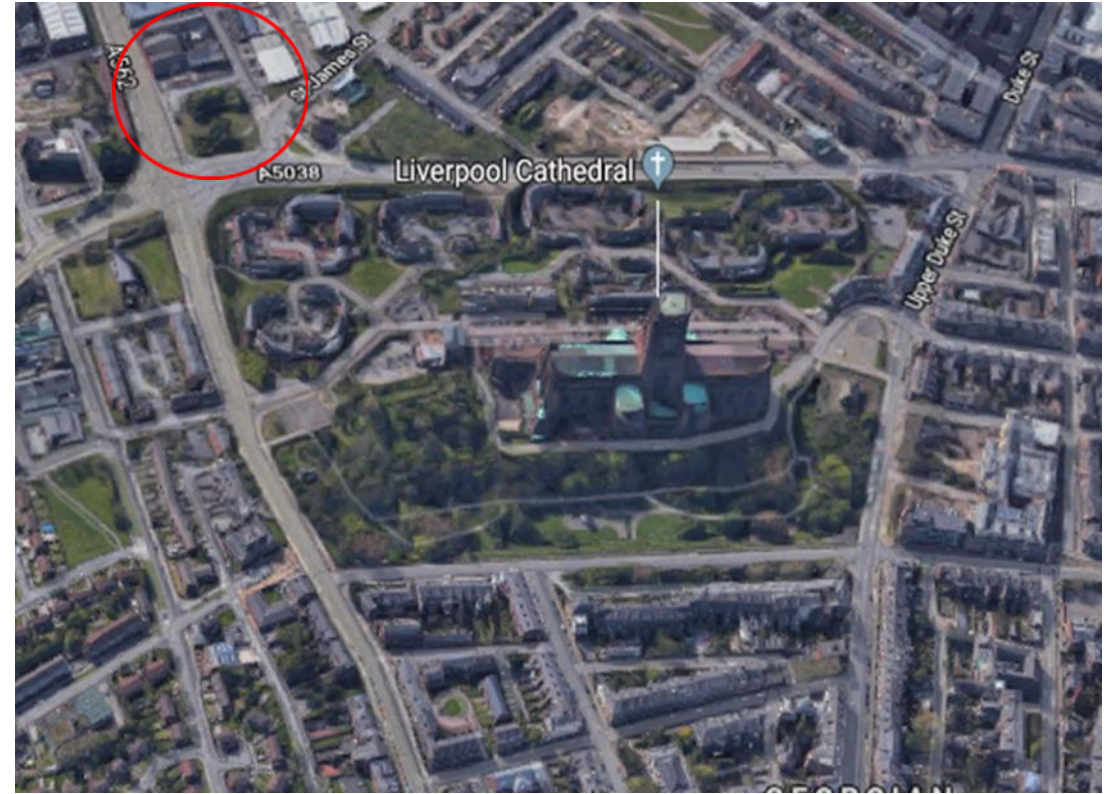
The eleven storey new build development generally comprises:

- Demolition of adjoining structures and perimeter walls
- Site clearance and levelling
- Site investigations and trial holes
- Excavation and formation of new foundations
- Below and above ground drainage
- New ground supported and part suspended concrete floor slab
- Eighteen storey steel frame structure
- External clad and glazed envelope
- Suspended metal deck and concrete floors
- Flat roof structures and finishes
- Aluminium curtain walling, external windows and doors and shopfronts
- External balconies and balustrades
- Internal sub-division of retail units and apartments with non-loadbearing block and stud partitions
- Installation of plumbing services and mechanical services
- Installation of electrical services
- Installation of new lift car access
- Installation of kitchen and sanitary fittings
- New internal finishes, joinery fittings and decorations

Site Location



Aerial View of the site prior to demolition



Aerial view of the site location of Parliament Square

Building Structure

Parliament Square, Liverpool
New Build Development

Sub-Structure & Super-Structure Progress

DECEMBER 2022

Site investigations	100% complete
Site compound and temporary supplies	100% complete
Demolition and site clearance	100% complete
Ground infill and site levelling	100% complete
Piling foundations	100% complete
Retaining walls, concrete beam foundations	100% complete
Basement slab construction	100% complete
Ground floor slab construction	100% complete
Concrete deck floor construction to upper floors	100% complete
Lift and staircase core concrete structure	100% complete
Concrete frame structure	100% complete
Internal staircase structure	85% complete
Sub-structure masonry walls	40% complete
Structural framework forming external walls	56% complete
Scaffolding & mast climber access	75% complete
Flat roof covering including balconies	0% complete
Weatherboarding	32% complete
External windows / doors & curtain walling	42% complete
External wall cladding and insulation	0% complete

Sub-Structure & Super-Structure Progress

DECEMBER 2022



Block D – Viewed from Greenland Street



Block D Section B – Viewed from Section C

Sub-Structure & Super-Structure Progress

DECEMBER 2022



Block D Section A – Weather board installation ongoing



Block D Section A – Weather board installation ongoing

Sub-Structure & Super-Structure Progress

DECEMBER 2022



Block D Section B – Viewed from Parliament Street



Block D Section B – Viewed from Parliament Street

Sub-Structure & Super-Structure Progress

DECEMBER 2022



Block D Section B – Viewed from Block B



Block D Section B – Viewed from Block B

Sub-Structure & Super-Structure Progress

DECEMBER 2022



Block D Section A – Viewed from Block B



Block D Section A – Viewed from Block B

Sub-Structure & Super-Structure Progress

DECEMBER 2022



Block D Section B – SFS installation



Block D Section A – Viewed from Section A

Sub-Structure & Super-Structure Progress

DECEMBER 2022



Crane removal ongoing



Crane removal ongoing

Sub-Structure & Super-Structure Progress

DECEMBER 2022



Block D Section B – Glazed balustrade installation commenced



Block D Section B – Window installation ongoing

Sub-Structure & Super-Structure Progress

DECEMBER 2022



Ground floor masonry walls



Ground floor masonry walls

Sub-Structure & Super-Structure Progress

DECEMBER 2022



Ground floor masonry walls



Ground floor masonry walls

Sub-Structure & Super-Structure Progress

DECEMBER 2022



Ground floor masonry walls



Blockwork loaded for installation

Sub-Structure & Super-Structure Progress

DECEMBER 2022



Block D Section B - Pre-cast concrete staircase



Block D Section B - Pre-cast concrete staircase

Sub-Structure & Super-Structure Progress

DECEMBER 2022



Block D Section B - Pre-cast concrete staircase



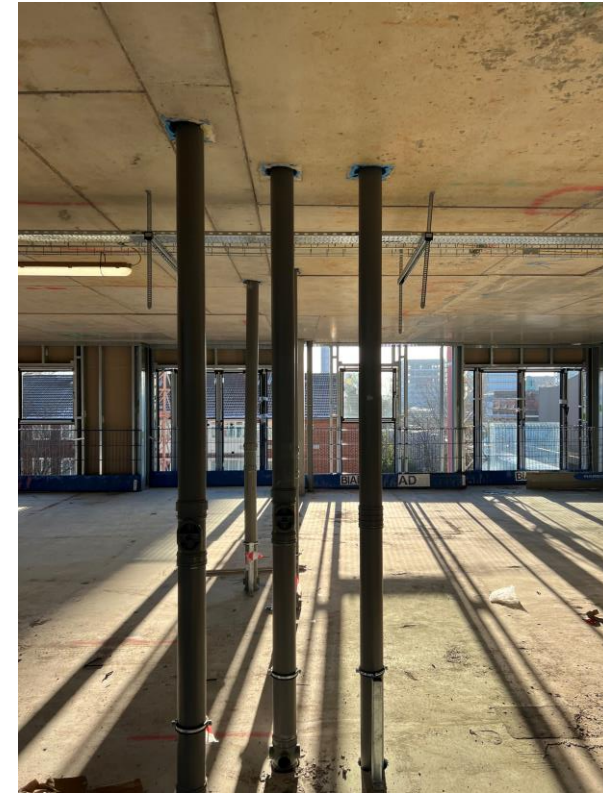
Block D Section B - Pre-cast concrete staircase

Sub-Structure & Super-Structure Progress

DECEMBER 2022



Electrical containment installed has commenced



Block D Section B – Soil vent pipes installed

Sub-Structure & Super-Structure Progress

DECEMBER 2022



Block D Section A – Ductwork



Block D Section A – Ductwork

Sub-Structure & Super-Structure Progress

DECEMBER 2022



Block D Section C – Reinforcement in place for concrete slab pour



Block D Section C – Reinforcement in place for concrete slab pour

Sub-Structure & Super-Structure Progress

DECEMBER 2022



Block D Section C – Reinforcement in place for concrete slab pour



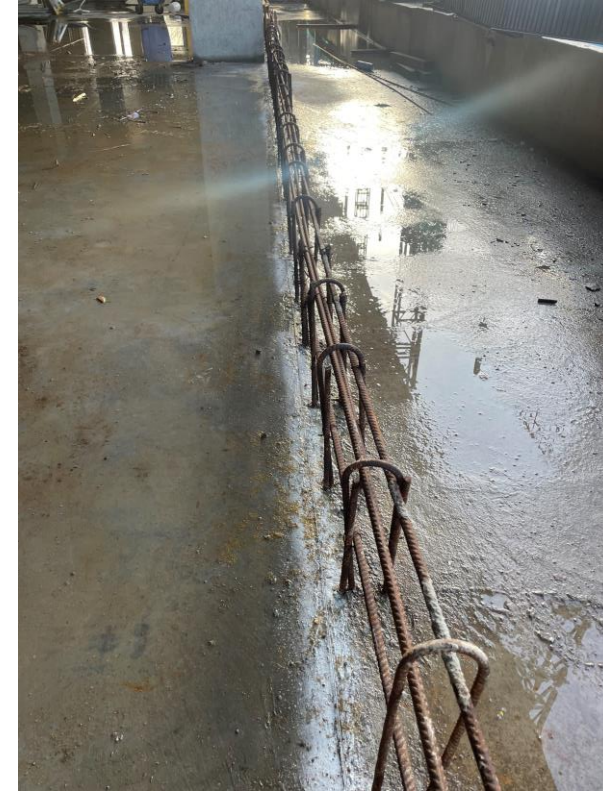
Block D Section C – Reinforcement in place for concrete slab pour

Sub-Structure & Super-Structure Progress

DECEMBER 2022



Block D Section B – Reinforcement in place for concrete slab pour



Block D Section C – Reinforcement in place for formation of concrete upstand

Sub-Structure & Super-Structure Progress

DECEMBER 2022



Block D Section C – Soil vent pipes installed



Block D Section C – Reinforcement in place for formation of concrete upstand

Sub-Structure & Super-Structure Progress

DECEMBER 2022



External windows installed



External windows installed

Sub-Structure & Super-Structure Progress

DECEMBER 2022



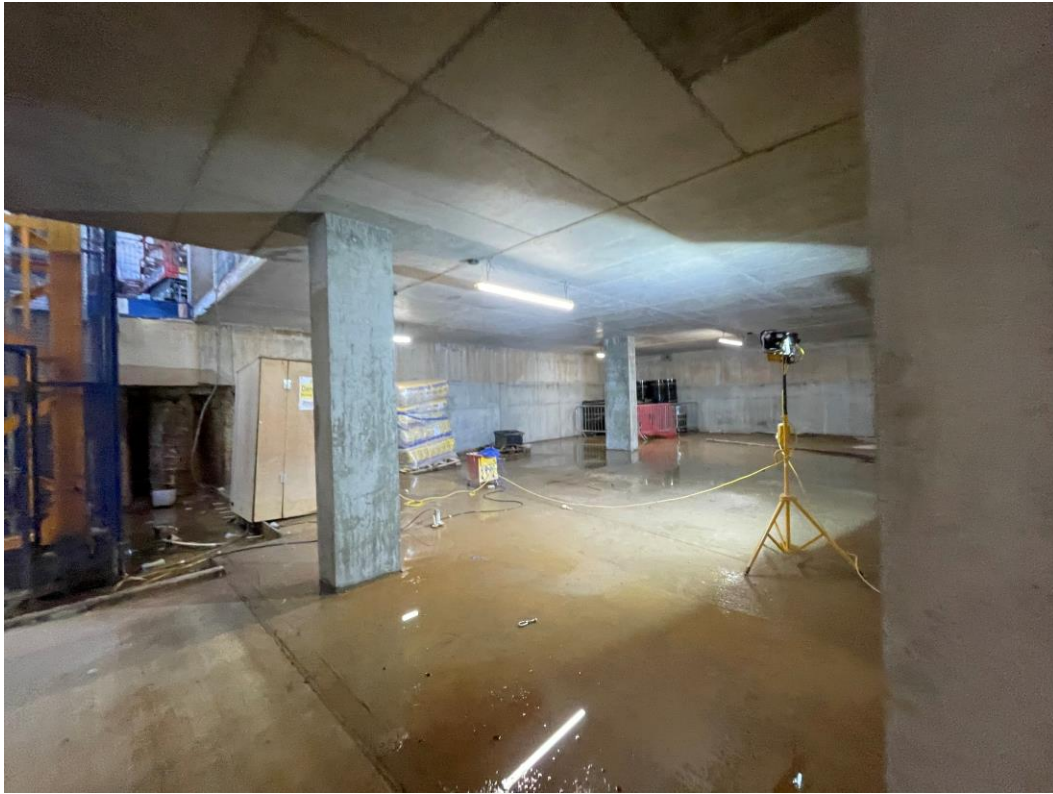
Electrical containment installed has commenced



Site activity

Sub-Structure & Super-Structure Progress

DECEMBER 2022



Block D – Basement



Block D – Basement ramp

Sub-Structure & Super-Structure Progress

DECEMBER 2022



Electrical containment installed has commenced



SFS loaded for installation

Sub-Structure & Super-Structure Progress

DECEMBER 2022



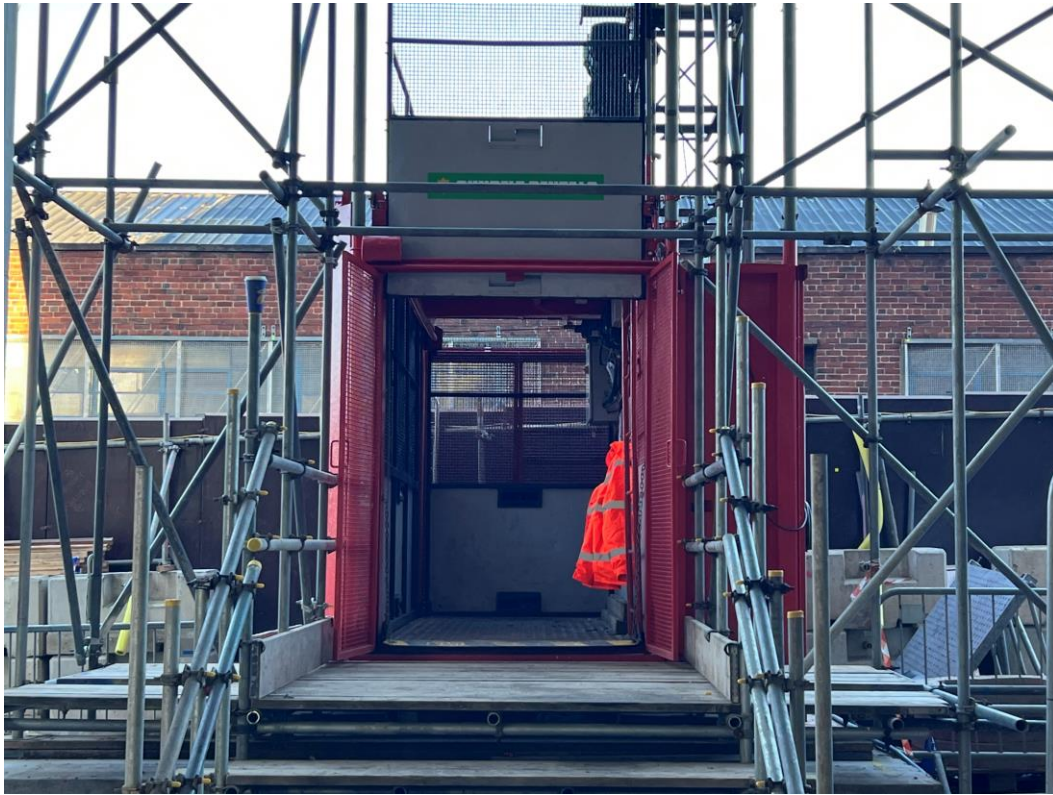
Table formwork in place



Table formwork in place

Sub-Structure & Super-Structure Progress

DECEMBER 2022



Block D Section A - Hoist lift



Block D Section A – Temporary lift shaft gates installed

Sub-Structure & Super-Structure Progress

DECEMBER 2022



Glazing units



Steel supports

Sub-Structure & Super-Structure Progress

DECEMBER 2022



Brick angle supports



Brick angle supports

Sub-Structure & Super-Structure Progress

DECEMBER 2022



SFS onsite



MEWP onsite

Sub-Structure & Super-Structure Progress

DECEMBER 2022



Blockwork loaded for installation



External windows on site

Sub-Structure & Super-Structure Progress

DECEMBER 2022



Insulation on site



External windows on site

TO FIND OUT MORE ABOUT

Parliament Square, Liverpool

PLEASE CONTACT

legacie

WWW.LEGACIE.CO.UK

By Appointment Only
Unit 4 Connect Business Village
Liverpool, L5 9PR
+44 (0) 151 207 9990