

legacie



Parliament Square  
Block 'D'  
Investors Report

IR17 October 2022

# Parliament Square – Phase 1 Block D

## 97 Luxury Apartments



Land at corner of Upper Parliament Street & Great St George Street, Liverpool L1

### Schedule of Accommodation Block 'D'

#### Basement

- Car parking
- Sub-Station
- Plant

#### Ground Floor

- Retail units
- Refuse store
- Hard and soft landscaping

#### Floors 1 - 11

- 31 no. Studio Apartments
- 22no. 1 Bedroom Apartments
- 44 no. 2 Bedroom Apartments

# New Build Two Phase Development to Create Residential Apartments Retail Units & Basement Parking

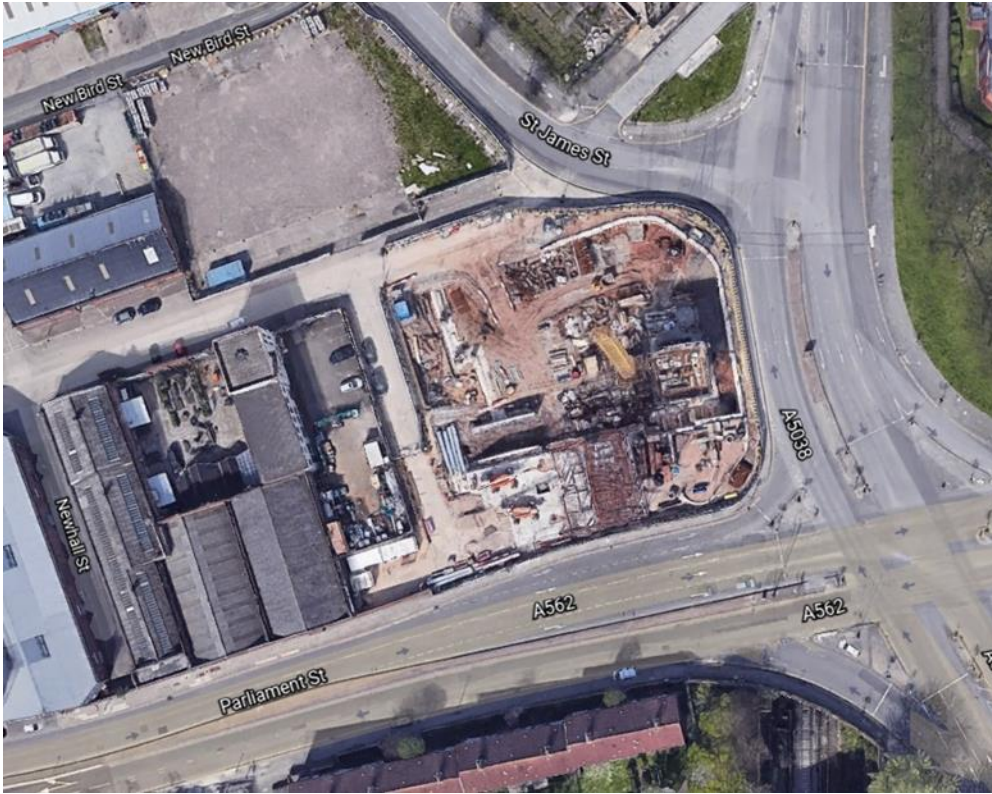


Land at corner of Upper Parliament Street & Great St George Street, Liverpool L1

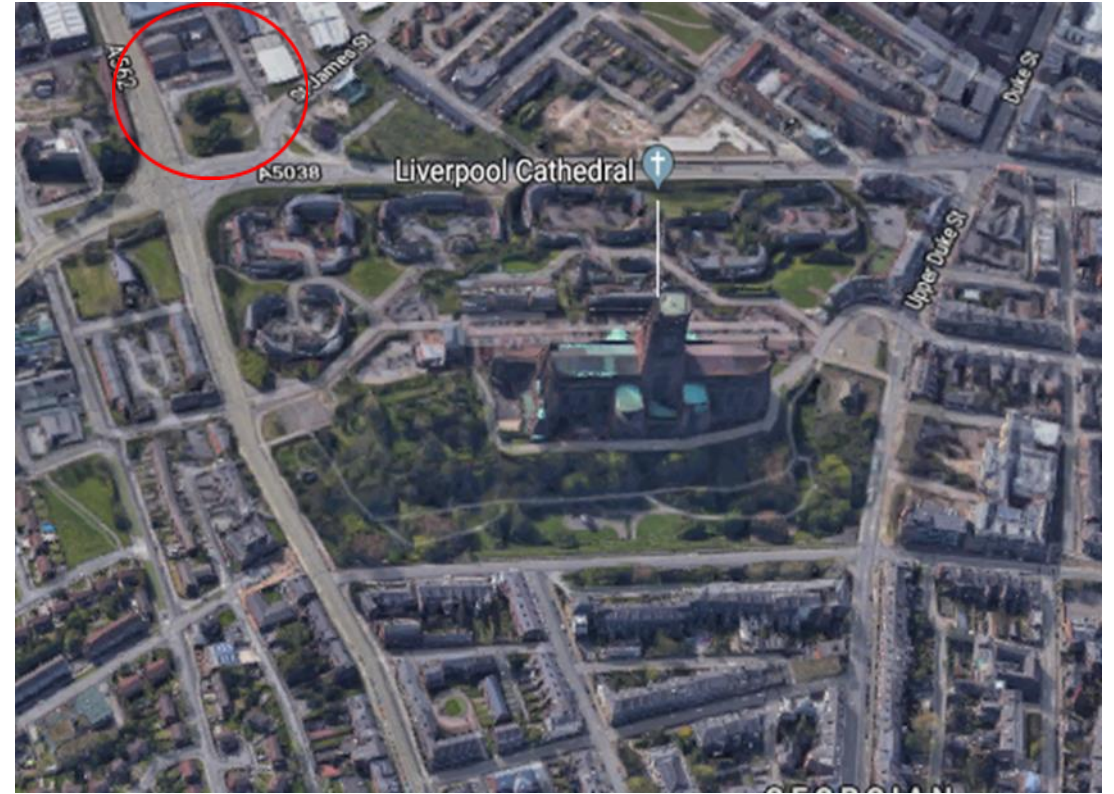
## The eleven storey new build development generally comprises:

- Demolition of adjoining structures and perimeter walls
- Site clearance and levelling
- Site investigations and trial holes
- Excavation and formation of new foundations
- Below and above ground drainage
- New ground supported and part suspended concrete floor slab
- Eighteen storey steel frame structure
- External clad and glazed envelope
- Suspended metal deck and concrete floors
- Flat roof structures and finishes
- Aluminium curtain walling, external windows and doors and shopfronts
- External balconies and balustrades
- Internal sub-division of retail units and apartments with non-loadbearing block and stud partitions
- Installation of plumbing services and mechanical services
- Installation of electrical services
- Installation of new lift car access
- Installation of kitchen and sanitary fittings
- New internal finishes, joinery fittings and decorations

# Site Location



Aerial View of the site prior to demolition



Aerial view of the site location of Parliament Square

# Building Structure

Parliament Square, Liverpool  
New Build Development

# Sub-Structure & Super-Structure Progress

OCTOBER 2022

Site investigations	100% complete
Site compound and temporary supplies	100% complete
Demolition and site clearance	100% complete
Ground infill and site levelling	100% complete
Piling foundations	100% complete
Retaining walls, concrete beam foundations	100% complete
Basement slab construction	100% complete
Ground floor slab construction	100% complete
Concrete deck floor construction to upper floors	72% complete
Lift and staircase core concrete structure	100% complete
Concrete frame structure	72% complete
Internal staircase structure	57% complete
Sub-structure masonry walls	0% complete
Structural framework forming external walls	14% complete
Scaffolding & mast climber access	65% complete
Flat roof covering including balconies	0% complete
Weatherboarding	0% complete
External windows / doors & curtain walling	5.8% complete
External wall cladding and insulation	0% complete

# Sub-Structure & Super-Structure Progress

OCTOBER 2022



Block D – Viewed from Block B



Block D Section B – Viewed from Block B

# Sub-Structure & Super-Structure Progress

OCTOBER 2022



Section B – Viewed from Block B



Concrete frame construction ongoing



# Sub-Structure & Super-Structure Progress

OCTOBER 2022



Section B – Viewed from Parliament Street



Section A - Concrete frame construction ongoing

# Sub-Structure & Super-Structure Progress

OCTOBER 2022



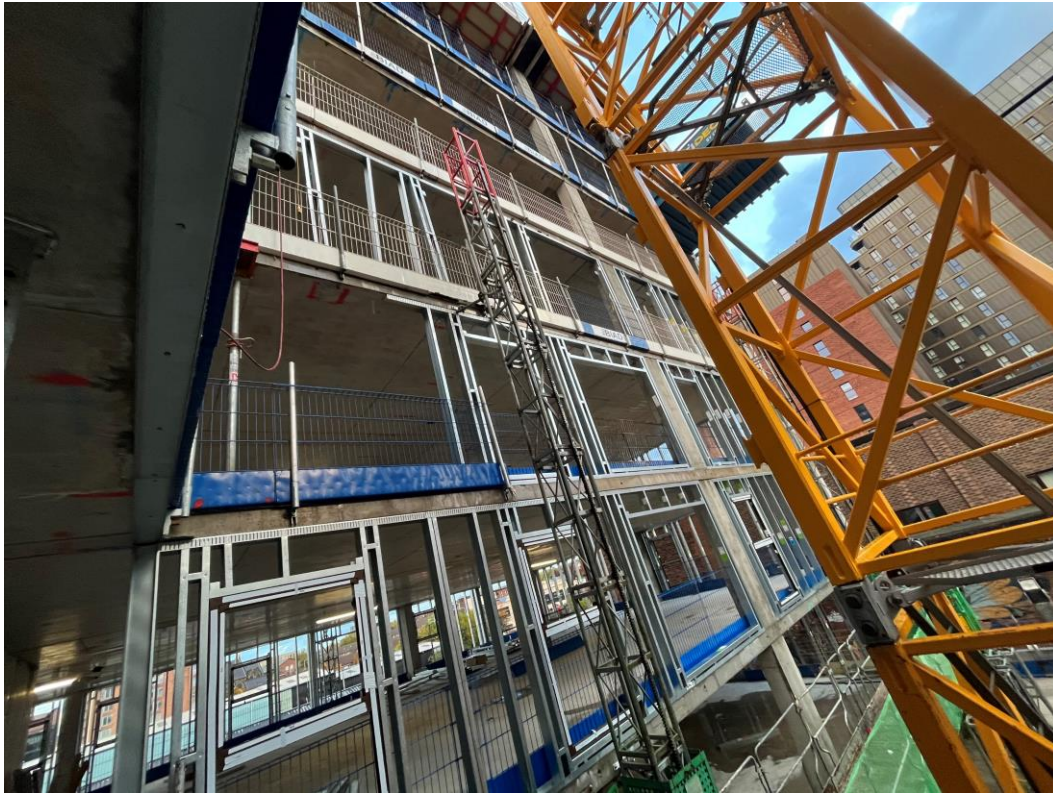
Section A – SFS Installation up to level 4



Section A - SFS Installation up to level 4

# Sub-Structure & Super-Structure Progress

OCTOBER 2022



Section A – SFS Installation up to level 4



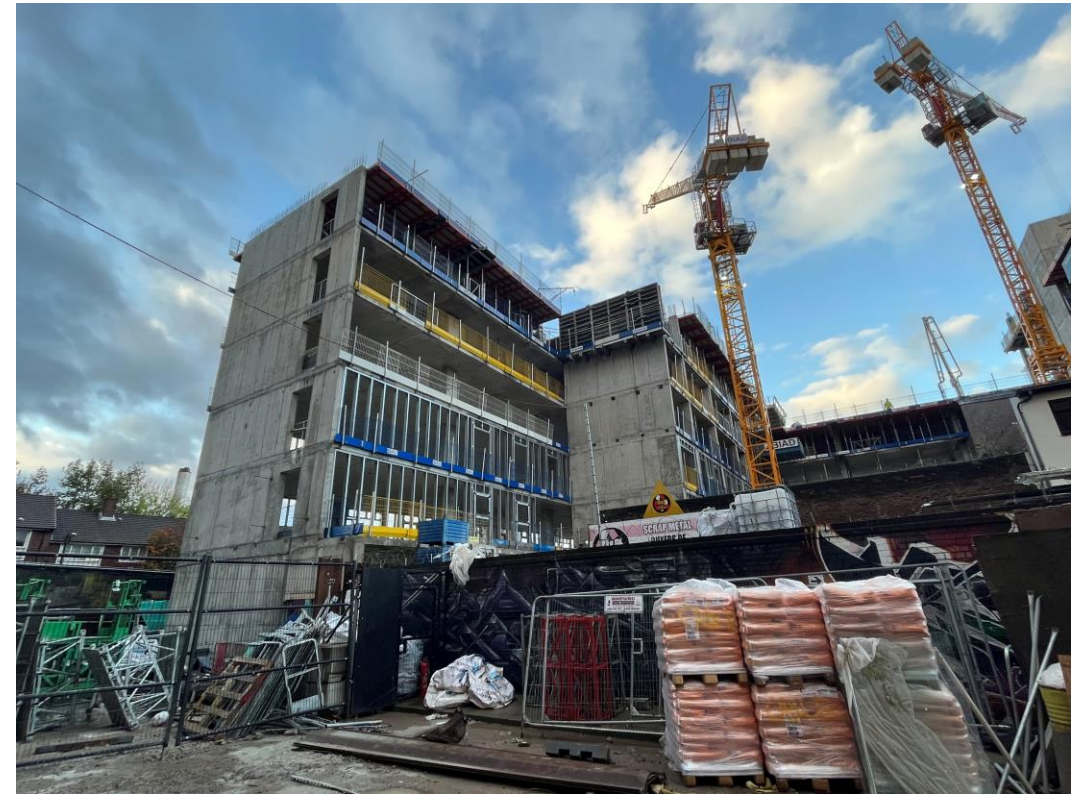
Section B - SFS Installation up to level 2

# Sub-Structure & Super-Structure Progress

OCTOBER 2022



Section B – SFS Installation up to level 2



Section B – Concrete pour for level 6 commenced

# Sub-Structure & Super-Structure Progress

OCTOBER 2022



Steel reinforcement onsite for installation



Site activity

# Sub-Structure & Super-Structure Progress

OCTOBER 2022



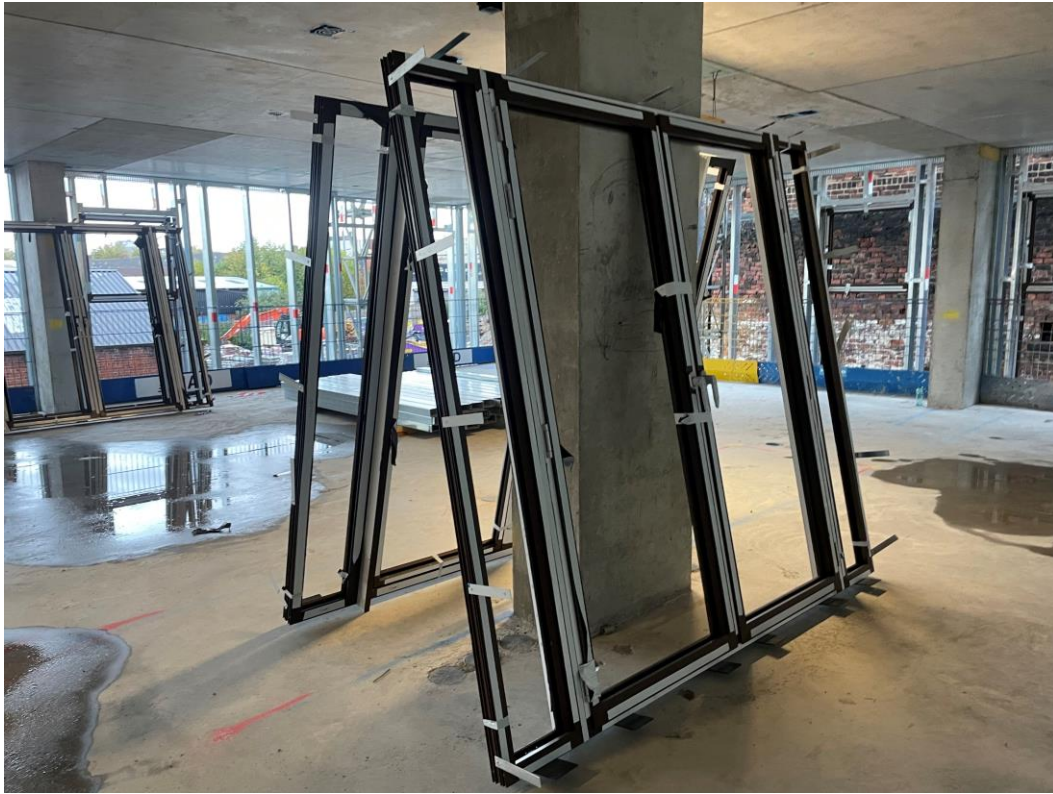
Section B – SFS Installation up to level 2



Section B – Window installation commenced

# Sub-Structure & Super-Structure Progress

OCTOBER 2022



Section A – External doors onsite for installation



Section A – Window installation commenced

# Sub-Structure & Super-Structure Progress

OCTOBER 2022



Section B – Window installation commenced



Section B – Window installation commenced



# Sub-Structure & Super-Structure Progress

OCTOBER 2022



Section B – Window installation commenced



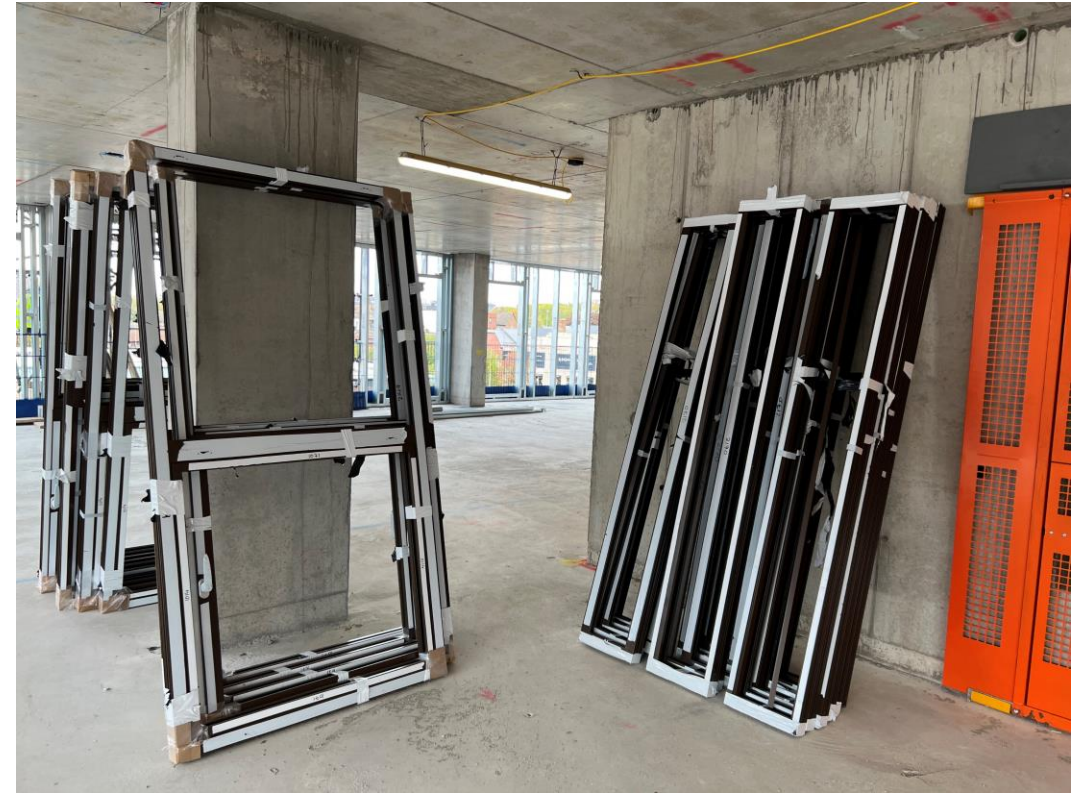
Section B – SFS installation up to level 2

# Sub-Structure & Super-Structure Progress

OCTOBER 2022



Section B – Window installation ongoing



Windows onsite for ready installation

# Sub-Structure & Super-Structure Progress

OCTOBER 2022



Section B – SFS installation up to level 2



Section B – SFS installation up to level 2

# Sub-Structure & Super-Structure Progress

OCTOBER 2022



Section B – Preparation works ongoing for Level 6 concrete pour



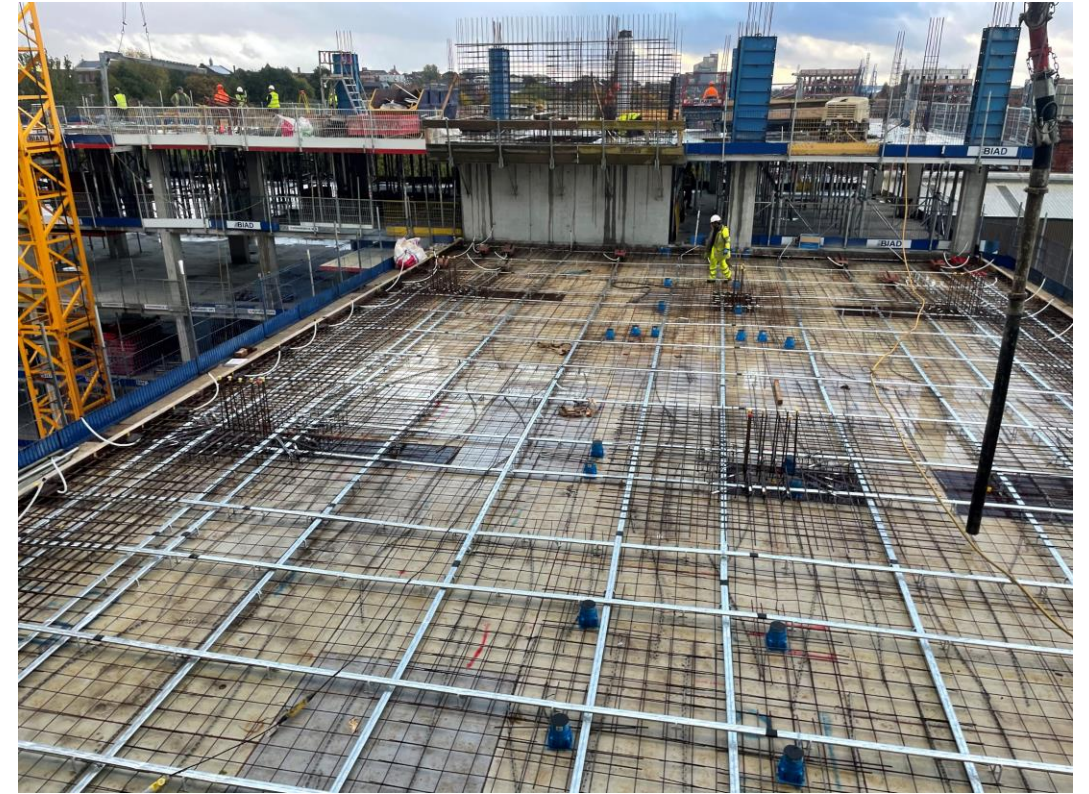
Section B – Preparation works ongoing for Level 6 concrete pour

# Sub-Structure & Super-Structure Progress

OCTOBER 2022



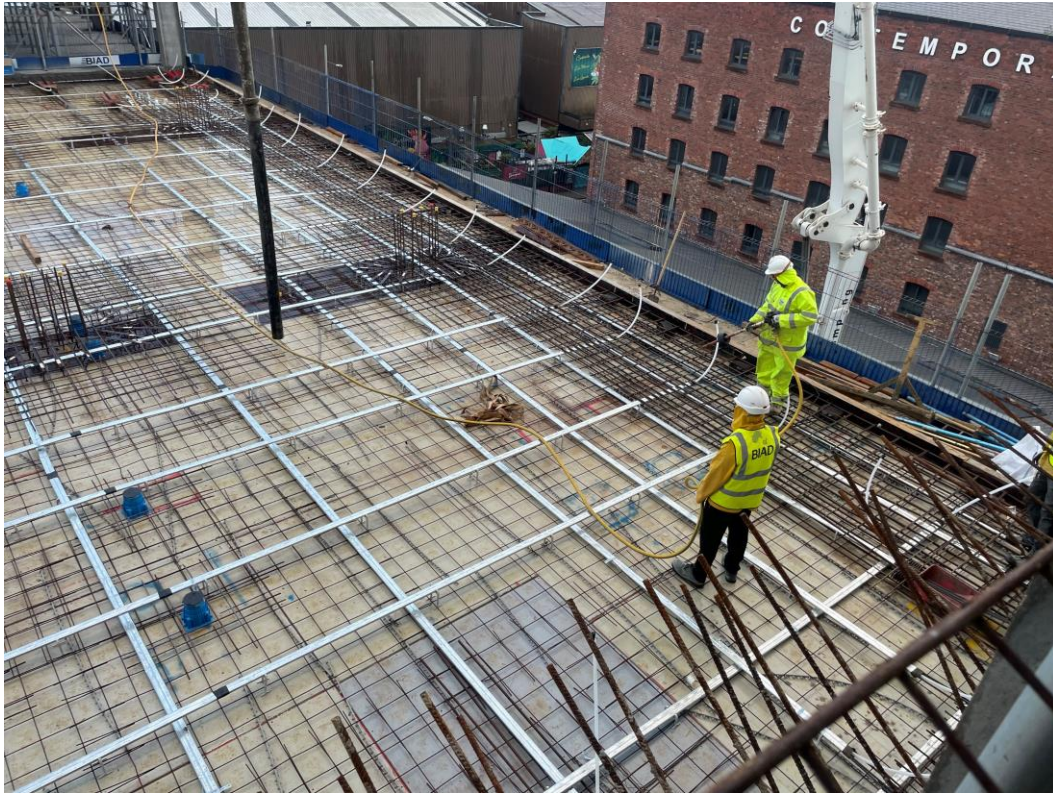
Section C – Preparation works ongoing for Level 4 concrete pour with reinforcement laid



Section C – Preparation works ongoing for Level 4 concrete pour with reinforcement laid

# Sub-Structure & Super-Structure Progress

OCTOBER 2022



Section C – Preparation works ongoing for Level 4 concrete pour with reinforcement laid



Section C – Reinforcement installed for concrete upstand

# Sub-Structure & Super-Structure Progress

OCTOBER 2022



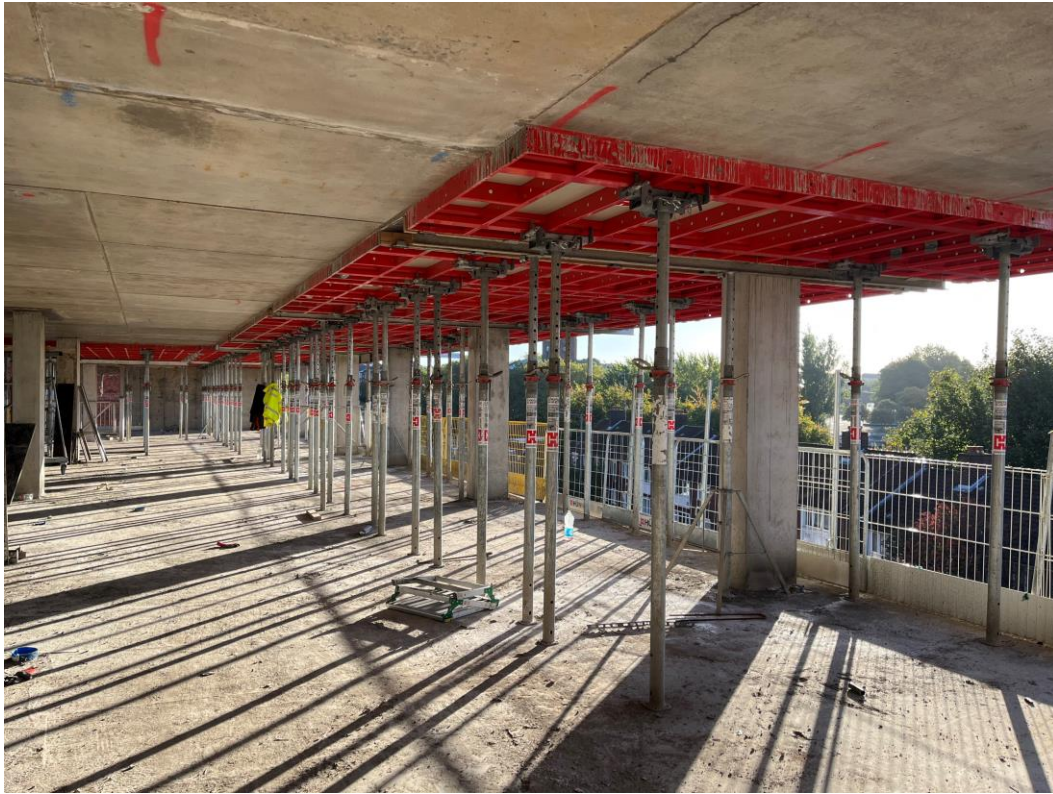
Section C – Level 5 concrete pour complete



Section C – Level 5 concrete pour complete

# Sub-Structure & Super-Structure Progress

OCTOBER 2022



Section B - Removal of form work following level 5 concrete pour



Section C - Table form work in place for Level 5 concrete pour

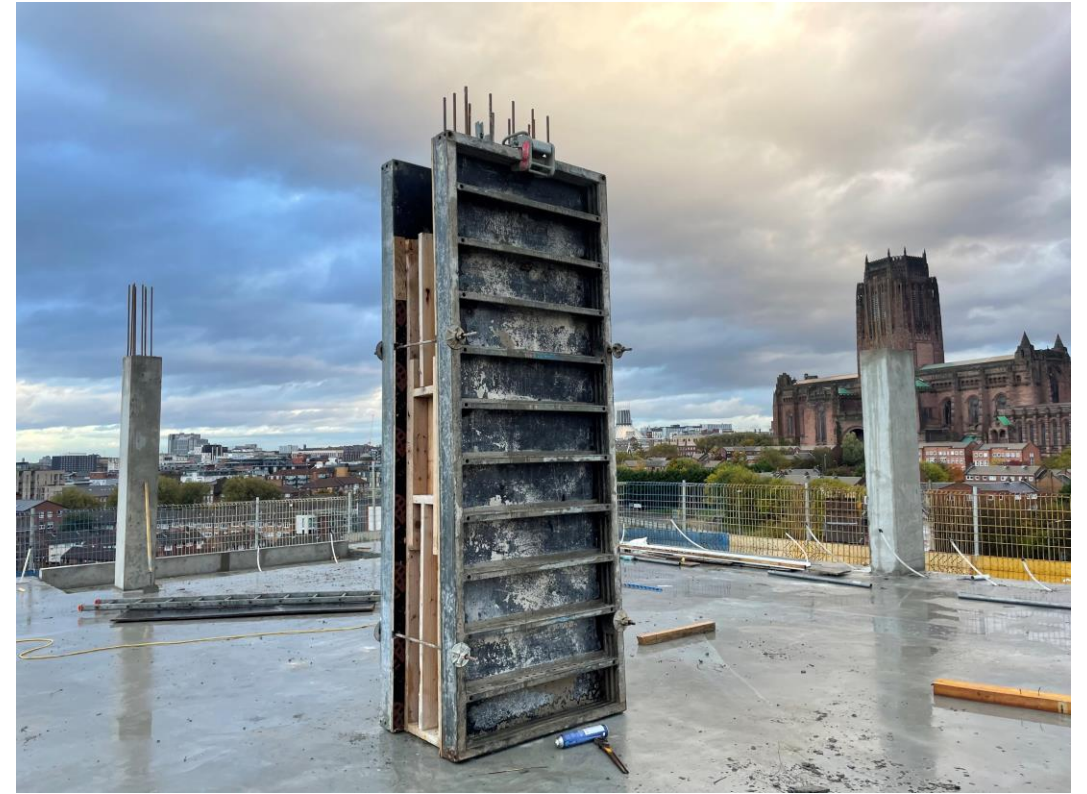


# Sub-Structure & Super-Structure Progress

OCTOBER 2022



Section A – Removal of form work following level 7 concrete pour



Section A – Column formwork in place

# Sub-Structure & Super-Structure Progress

OCTOBER 2022



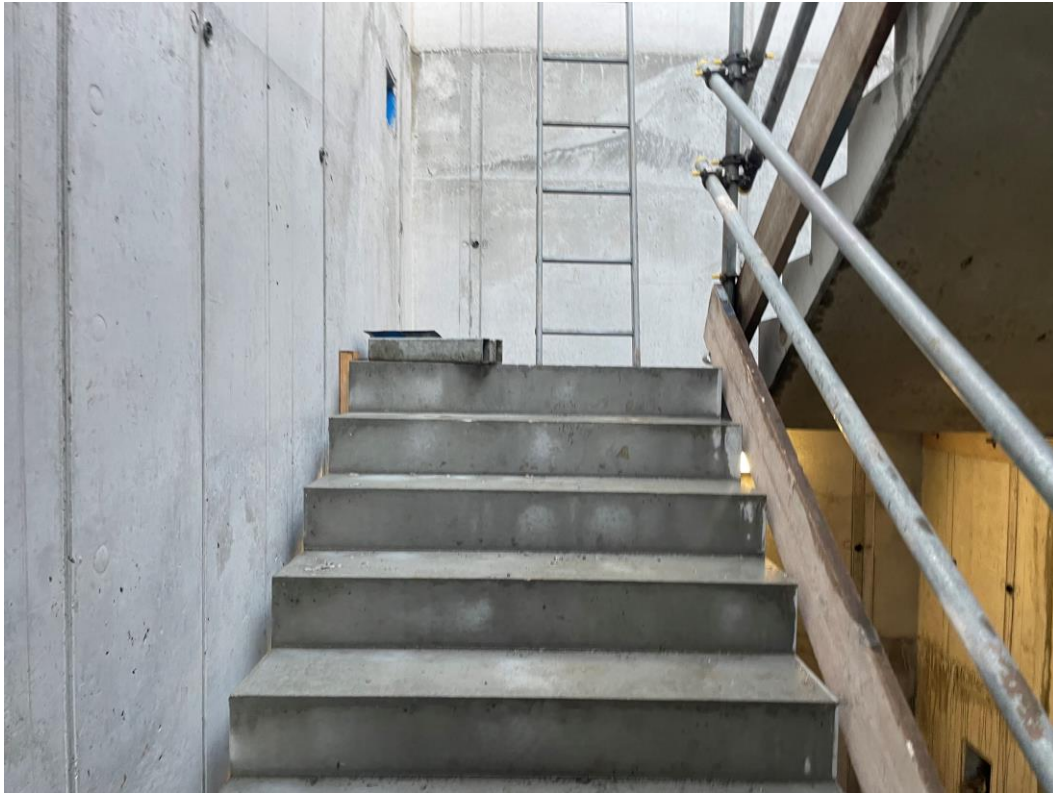
Section A – Removal of form work following level 7 concrete pour



Section A – Concrete frame construction ongoing

# Sub-Structure & Super-Structure Progress

OCTOBER 2022



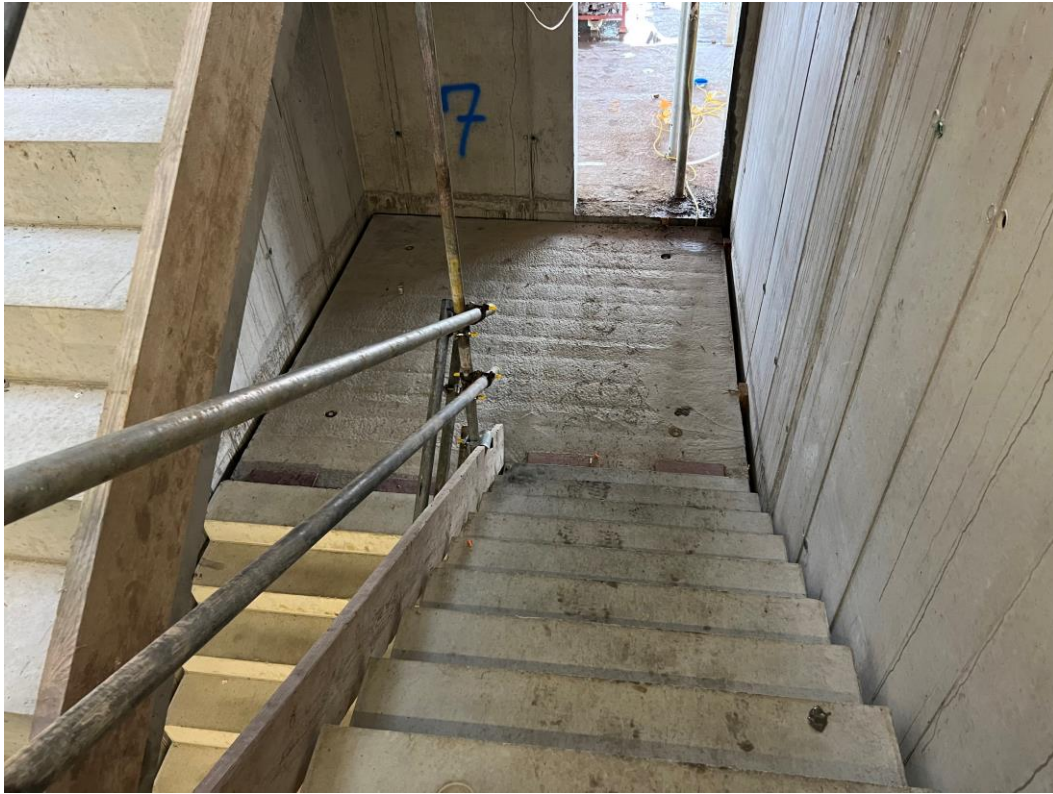
Section A – Concrete staircase installation ongoing



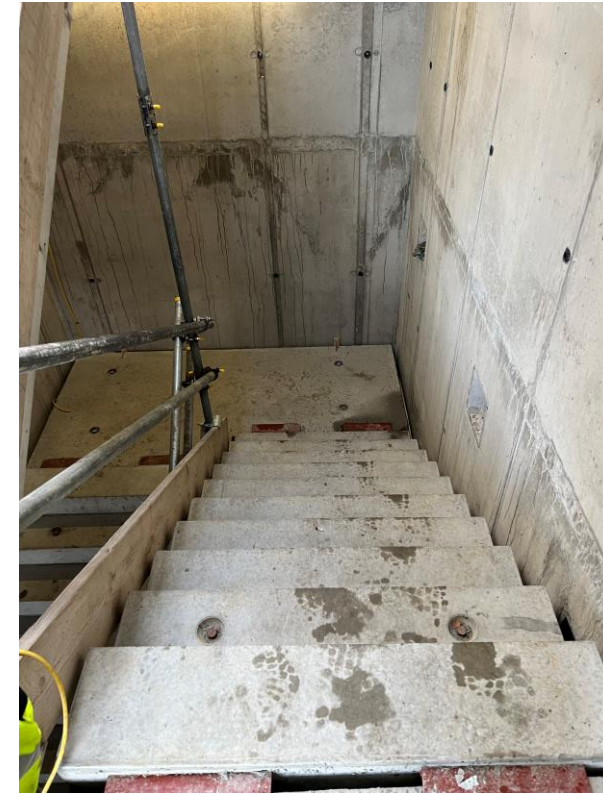
Section A – Concrete frame construction ongoing

# Sub-Structure & Super-Structure Progress

OCTOBER 2022



Section A – Concrete staircase installation ongoing



Section A – Concrete frame construction ongoing

# Sub-Structure & Super-Structure Progress

OCTOBER 2022



Section B – Concrete upstand formation ongoing



Section A – Concrete slab installation ongoing

# Sub-Structure & Super-Structure Progress

OCTOBER 2022



MEWPS onsite



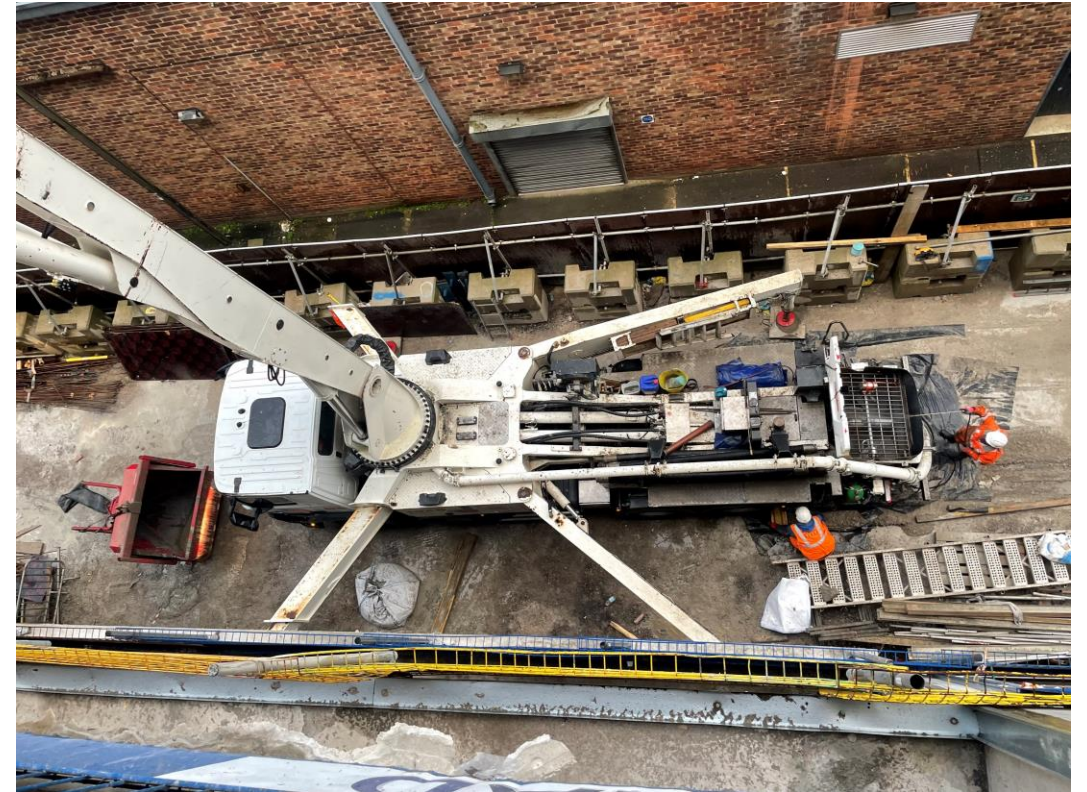
Site activity

# Sub-Structure & Super-Structure Progress

OCTOBER 2022



Temporary shaft protection in place



Concrete pour ongoing

# Sub-Structure & Super-Structure Progress

OCTOBER 2022



Site activity



Site activity



# Sub-Structure & Super-Structure Progress

OCTOBER 2022



Weatherboard onsite for installation



SFS onsite for installation

# Sub-Structure & Super-Structure Progress

OCTOBER 2022



SFS onsite for installation



SFS onsite for installation

# Sub-Structure & Super-Structure Progress

OCTOBER 2022



Site activity



Site activity

# Sub-Structure & Super-Structure Progress

OCTOBER 2022



Mast climbers installed



Site activity

# Sub-Structure & Super-Structure Progress

OCTOBER 2022



Sheet piles installed



Party wall works

# Sub-Structure & Super-Structure Progress

OCTOBER 2022



Site activity



Mast climbers installed

# Sub-Structure & Super-Structure Progress

OCTOBER 2022



Site activity



Reinforcement onsite for installation

# Sub-Structure & Super-Structure Progress

OCTOBER 2022



Plant onsite for installation



Reinforcement onsite for installation



# Sub-Structure & Super-Structure Progress

OCTOBER 2022



Formwork supports in place



Scaffolding installation ongoing

TO FIND OUT MORE ABOUT

Parliament Square, Liverpool

PLEASE CONTACT

legacie

WWW.LEGACIE.CO.UK

By Appointment Only  
Unit 4 Connect Business Village  
Liverpool, L5 9PR  
+44 (0) 151 207 9990