

legacie



Parliament Square Block 'D' Investors Report

IR16 September 2022

Parliament Square – Phase 1 Block D

97 Luxury Apartments



Land at corner of Upper Parliament Street & Great St George Street, Liverpool L1

Schedule of Accommodation Block 'D'

Basement

- Car parking
- Sub-Station
- Plant

Ground Floor

- Retail units
- Refuse store
- Hard and soft landscaping

Floors 1 - 11

- 31 no. Studio Apartments
- 22no. 1 Bedroom Apartments
- 44 no. 2 Bedroom Apartments

New Build Two Phase Development to Create Residential Apartments Retail Units & Basement Parking

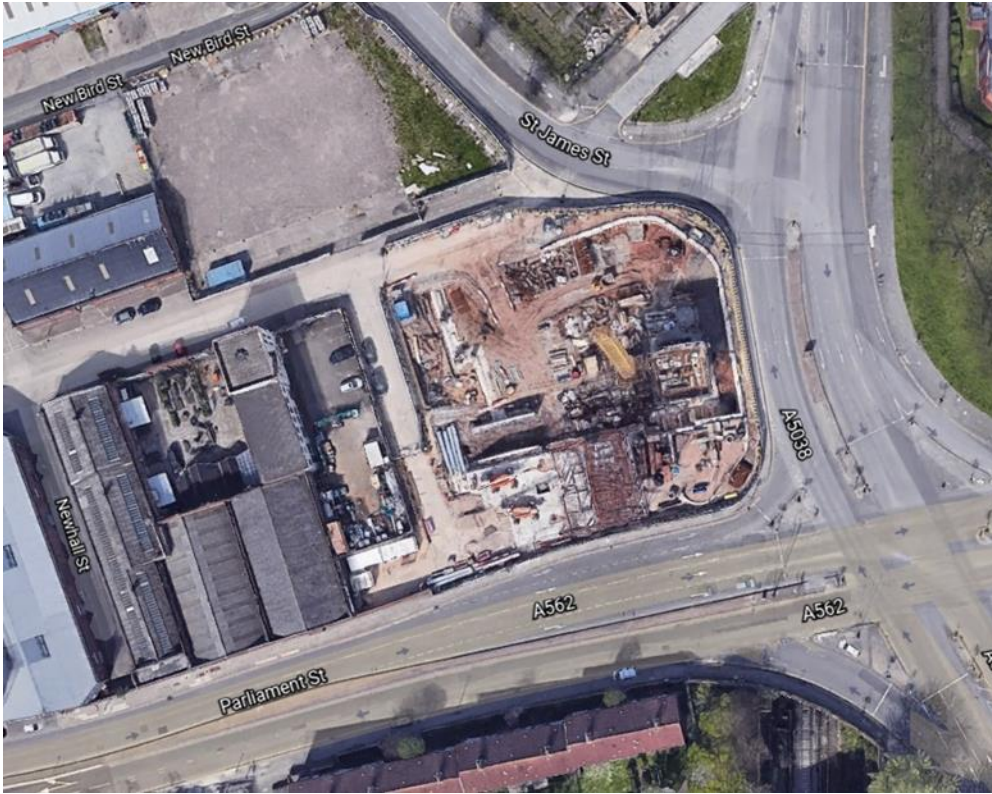


Land at corner of Upper Parliament Street & Great St George Street, Liverpool L1

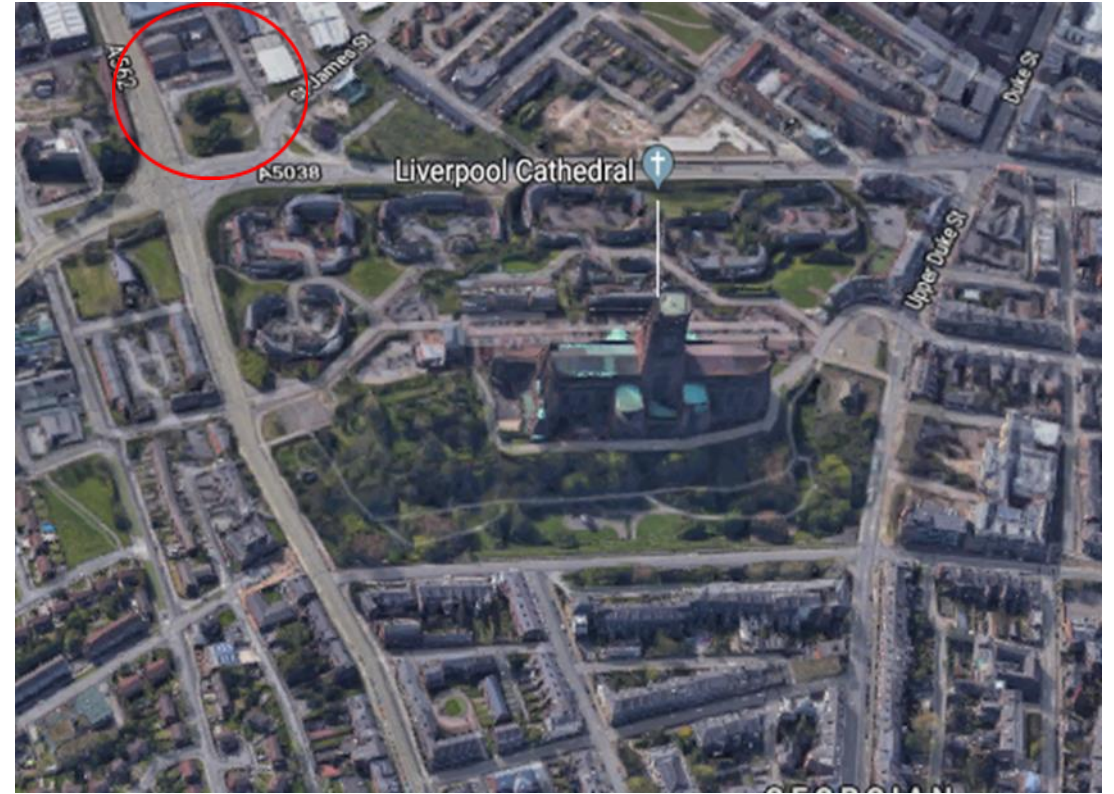
The eleven storey new build development generally comprises:

- Demolition of adjoining structures and perimeter walls
- Site clearance and levelling
- Site investigations and trial holes
- Excavation and formation of new foundations
- Below and above ground drainage
- New ground supported and part suspended concrete floor slab
- Eighteen storey steel frame structure
- External clad and glazed envelope
- Suspended metal deck and concrete floors
- Flat roof structures and finishes
- Aluminium curtain walling, external windows and doors and shopfronts
- External balconies and balustrades
- Internal sub-division of retail units and apartments with non-loadbearing block and stud partitions
- Installation of plumbing services and mechanical services
- Installation of electrical services
- Installation of new lift car access
- Installation of kitchen and sanitary fittings
- New internal finishes, joinery fittings and decorations

Site Location



Aerial View of the site prior to demolition



Aerial view of the site location of Parliament Square

Building Structure

Parliament Square, Liverpool
New Build Development

Sub-Structure & Super-Structure Construction Progress

SEPTEMBER 2022

Site investigations	100% complete
Site compound and temporary supplies	100% complete
Demolition and site clearance	100% complete
Ground infill and site levelling	100% complete
Piling foundations	100% complete
Retaining walls, concrete beam foundations	100% complete
Basement slab construction	100% complete
Ground floor slab construction	100% complete
Concrete deck floor construction to upper floors	58% complete
Lift and staircase core concrete structure	100% complete
Concrete frame structure	73% complete
Internal staircase structure	30% complete
Sub-structure masonry walls	0% complete
Structural framework forming external walls	4% complete
Scaffolding & mast climber access	0% complete
Flat roof covering including balconies	0% complete
Weatherboarding	0% complete
External windows / doors & curtain walling	0% complete
External wall cladding and insulation	0% complete

Sub-Structure & Super-Structure Progress

SEPTEMBER 2022



Block D – Viewed from Block B



Block D – Viewed from Block B

Sub-Structure & Super-Structure Progress

SEPTEMBER 2022



Section B – Viewed from Block B



Section A – Concrete frame construction ongoing

Sub-Structure & Super-Structure Progress

SEPTEMBER 2022



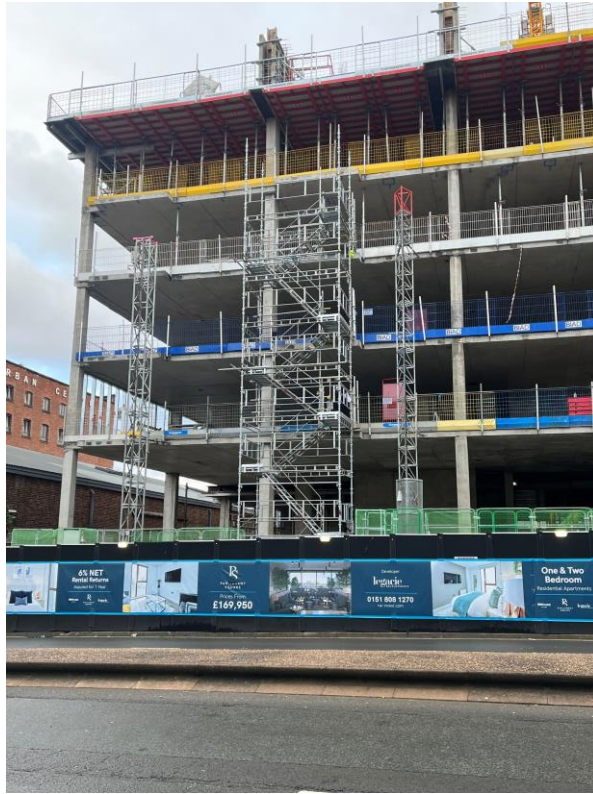
Section B – Viewed from Parliament Street



Section B – Viewed from Parliament Street

Sub-Structure & Super-Structure Progress

SEPTEMBER 2022



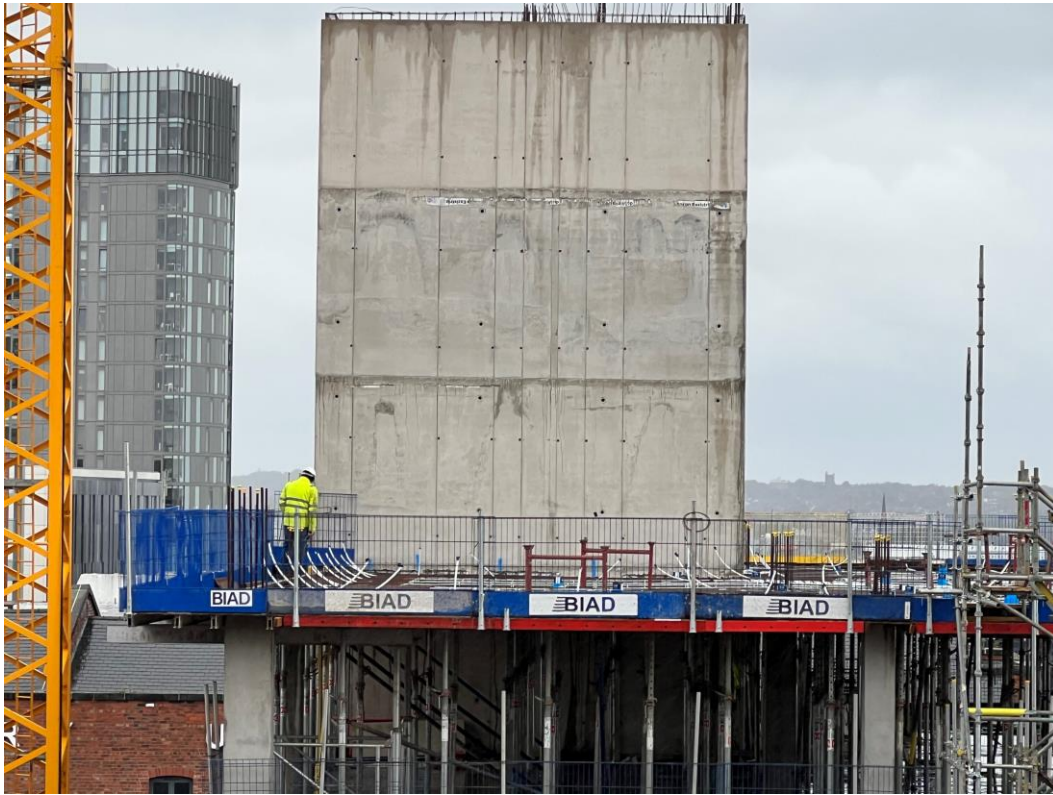
Block D – Section B Access



Block D – Viewed from Parliament Street

Sub-Structure & Super-Structure Progress

SEPTEMBER 2022



Section A – Stair core shaft complete



Section B – Viewed from Crump Street

Sub-Structure & Super-Structure Progress

SEPTEMBER 2022



Section C – Level 3 slab pour complete



Section A – SFS installation commenced

Sub-Structure & Super-Structure Progress

SEPTEMBER 2022



Section C – Formwork in place following Level 3 pour



Section A – SFS installation

Sub-Structure & Super-Structure Progress

SEPTEMBER 2022



Section A – Mast Climber access in place



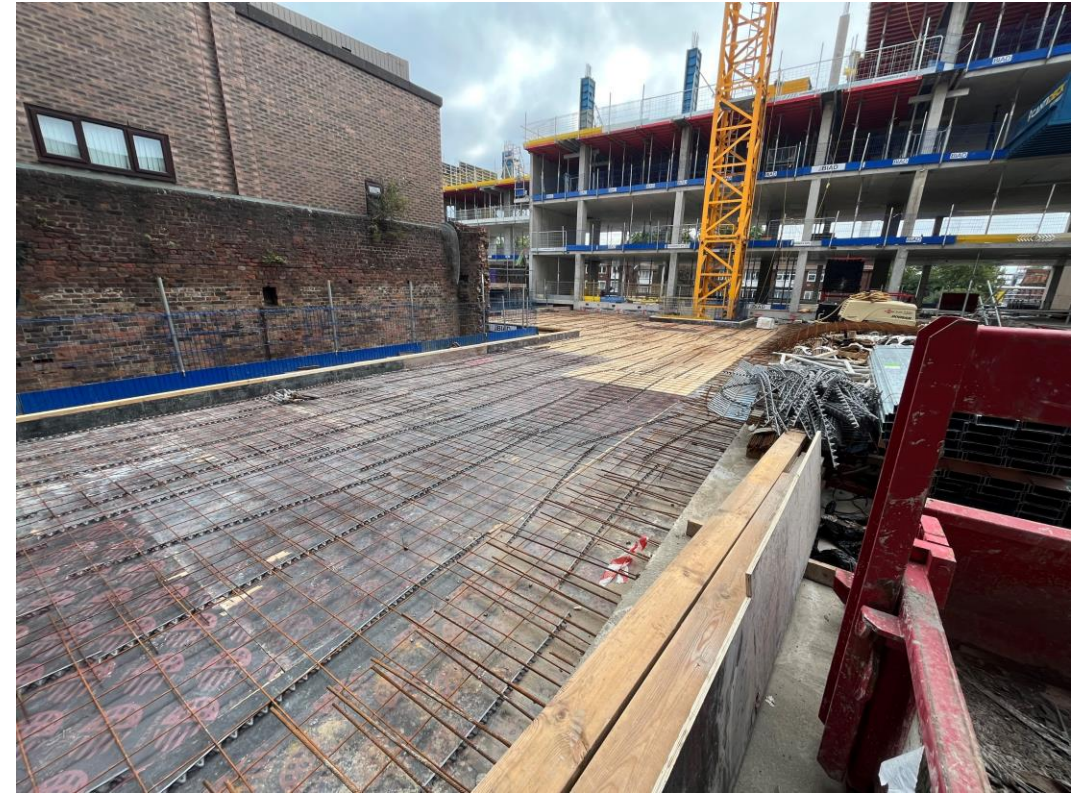
Section A – Concrete frame construction up to level 7

Sub-Structure & Super-Structure Progress

SEPTEMBER 2022



Section C – Preparations made for Podium concrete pour



Section C – Preparations made for Podium concrete pour

Sub-Structure & Super-Structure Progress

SEPTEMBER 2022



Reinforcement onsite ready for installation



Site activity

Sub-Structure & Super-Structure Progress

SEPTEMBER 2022



Site activity



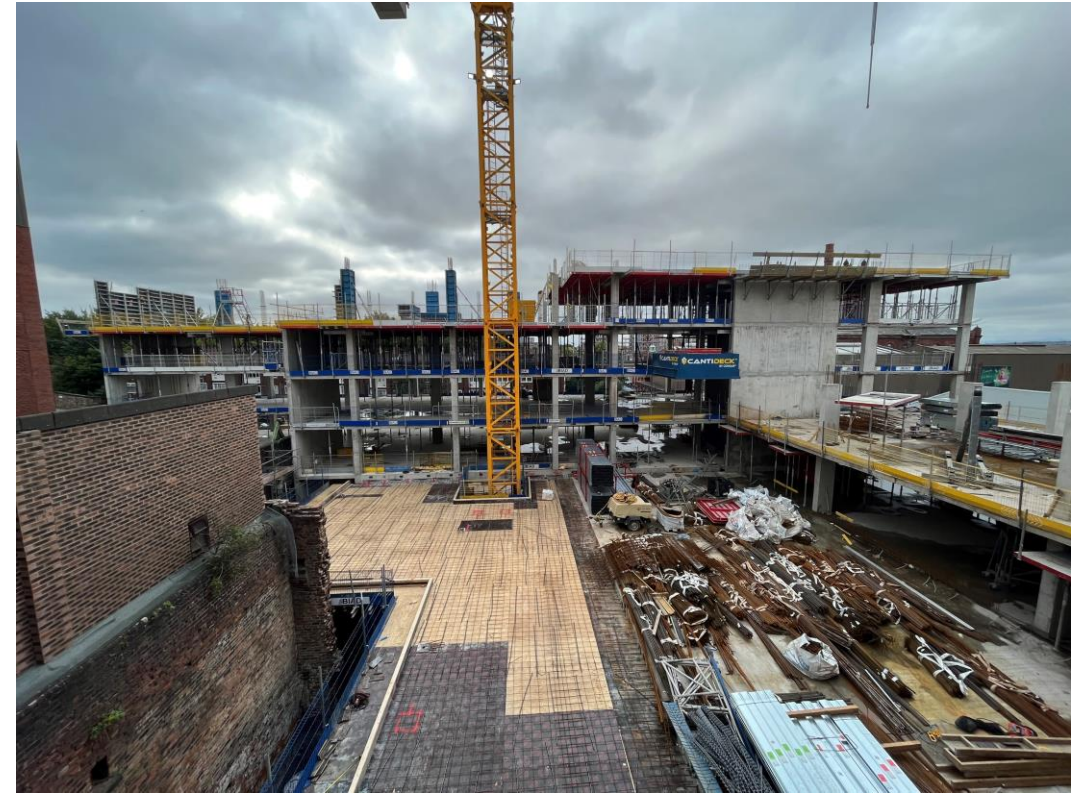
Site activity

Sub-Structure & Super-Structure Progress

SEPTEMBER 2022



Section B – Temporary working platform in place



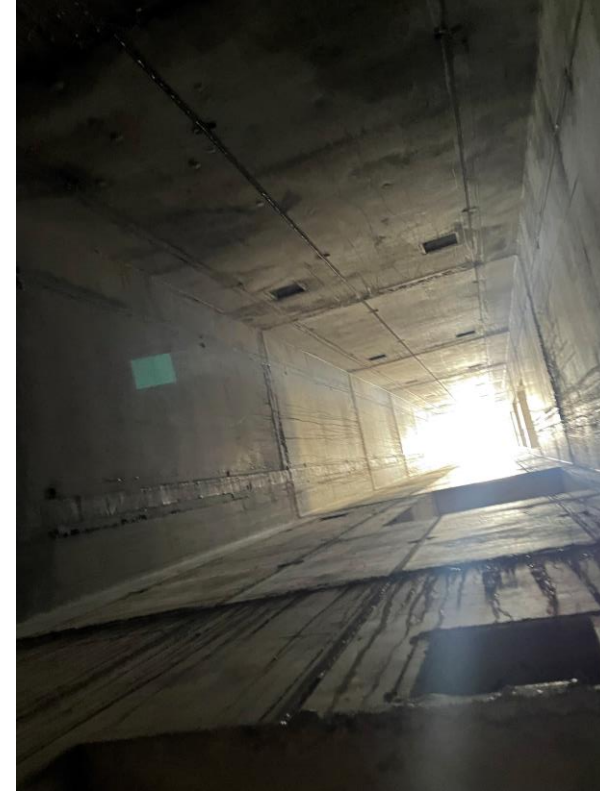
Site activity

Sub-Structure & Super-Structure Progress

SEPTEMBER 2022



Section A – Concrete stair case installation ongoing



Section A – Lift shaft formation complete

Sub-Structure & Super-Structure Progress

SEPTEMBER 2022



Section B - Site activity



Section B – Site activity

Sub-Structure & Super-Structure Progress

SEPTEMBER 2022



Section B – Opening in floor slab for staircase installation



Section B – Formwork support in place

Sub-Structure & Super-Structure Progress

SEPTEMBER 2022



Section A – SFS Installation commenced



Section A – SFS Installation commenced

Sub-Structure & Super-Structure Progress

SEPTEMBER 2022



Section A – SFS Installation commenced



Section A – SFS loaded to Level 2 ready for installation

Sub-Structure & Super-Structure Progress

SEPTEMBER 2022



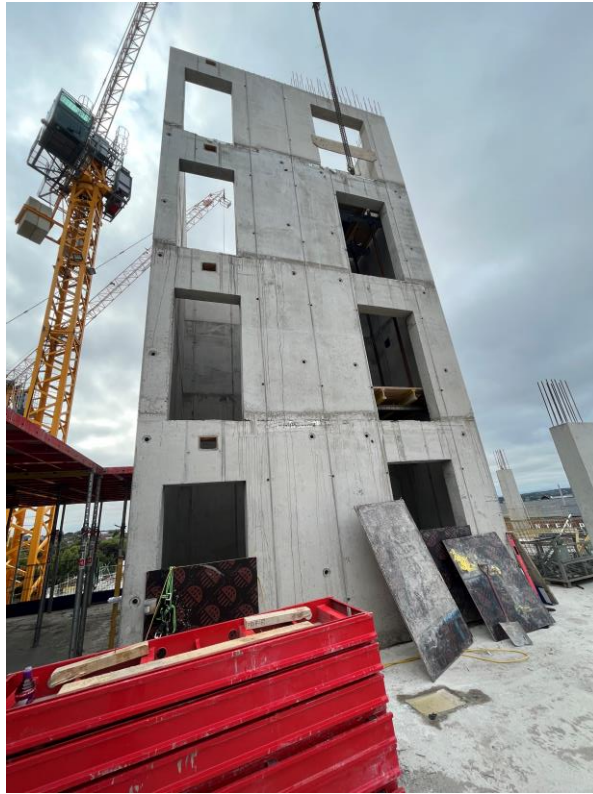
Concrete base poured for Hoist



SFS loaded for installation

Sub-Structure & Super-Structure Progress

SEPTEMBER 2022



Section A – Stair Core & lift shaft formation ongoing



Section A – Concrete frame construction ongoing

Sub-Structure & Super-Structure Progress

SEPTEMBER 2022



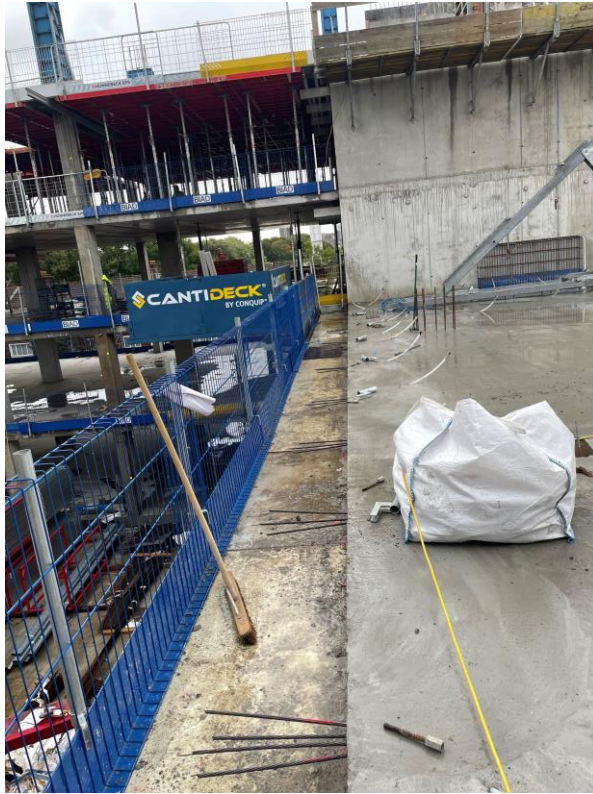
Section A – Sheet piling in place



Basement ramp

Sub-Structure & Super-Structure Progress

SEPTEMBER 2022



Site activity



Formwork onsite

Sub-Structure & Super-Structure Progress

SEPTEMBER 2022



Section B – Removal of form work following Level 5



Section A – Formwork in place in preparation for Level 7

Sub-Structure & Super-Structure Progress

SEPTEMBER 2022



Section B – Removal of form work following Level 5



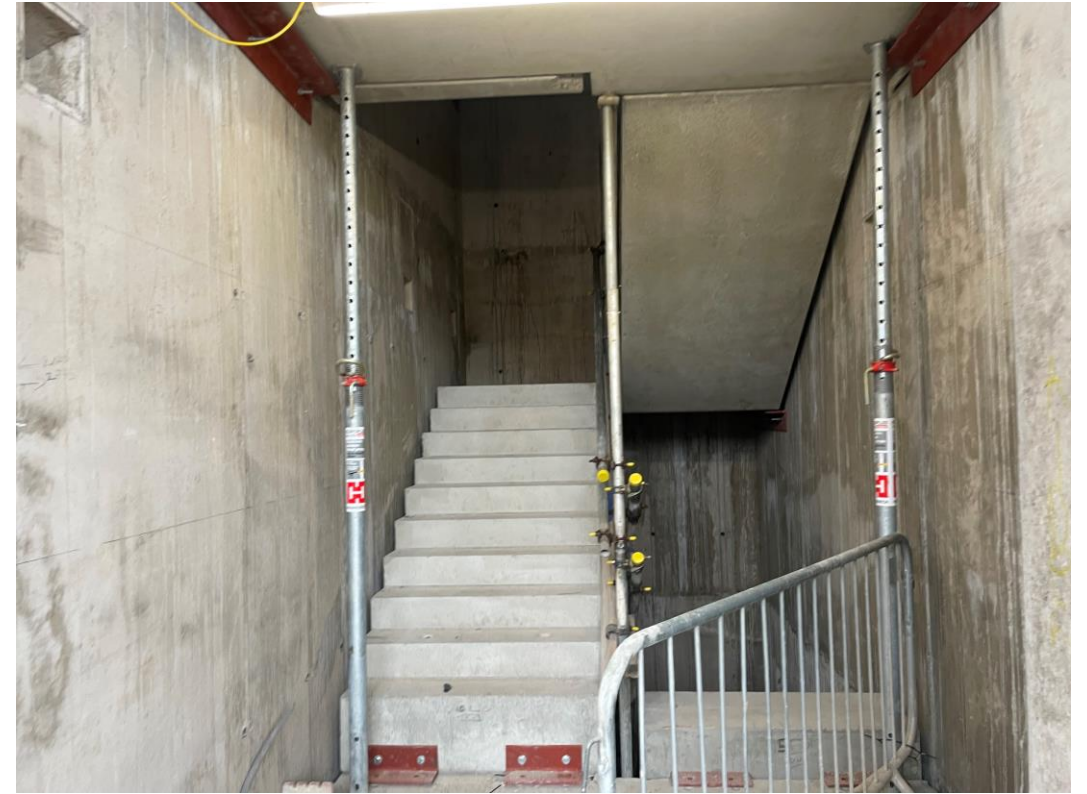
Section C – Formwork in place

Sub-Structure & Super-Structure Progress

SEPTEMBER 2022



Section A – Concrete stair case installation ongoing



Section A – Concrete stair case installation ongoing

Sub-Structure & Super-Structure Progress

SEPTEMBER 2022



Section C – Installation of PT Strands



Section C – Installation of PT Strands

Sub-Structure & Super-Structure Progress

SEPTEMBER 2022



Section C – Installation of PT Strands



Section C – Column reinforcement

Sub-Structure & Super-Structure Progress

SEPTEMBER 2022



Lightning Conductor Cable in place



From work supports

Sub-Structure & Super-Structure Progress

SEPTEMBER 2022



PT Strand onsite for installation



SFS onsite for installation

TO FIND OUT MORE ABOUT

Parliament Square, Liverpool

PLEASE CONTACT

legacie

WWW.LEGACIE.CO.UK

By Appointment Only
Unit 4 Connect Business Village
Liverpool, L5 9PR
+44 (0) 151 207 9990