

legacie



Parliament Square  
Block 'D'  
Investors Report

IR15 August 2022

# Parliament Square – Phase 1 Block D

## 97 Luxury Apartments



Land at corner of Upper Parliament Street & Great St George Street, Liverpool L1

### Schedule of Accommodation Block 'D'

#### Basement

- Car parking
- Sub-Station
- Plant

#### Ground Floor

- Retail units
- Refuse store
- Hard and soft landscaping

#### Floors 1 - 11

- 31 no. Studio Apartments
- 22no. 1 Bedroom Apartments
- 44 no. 2 Bedroom Apartments

# New Build Two Phase Development to Create Residential Apartments Retail Units & Basement Parking

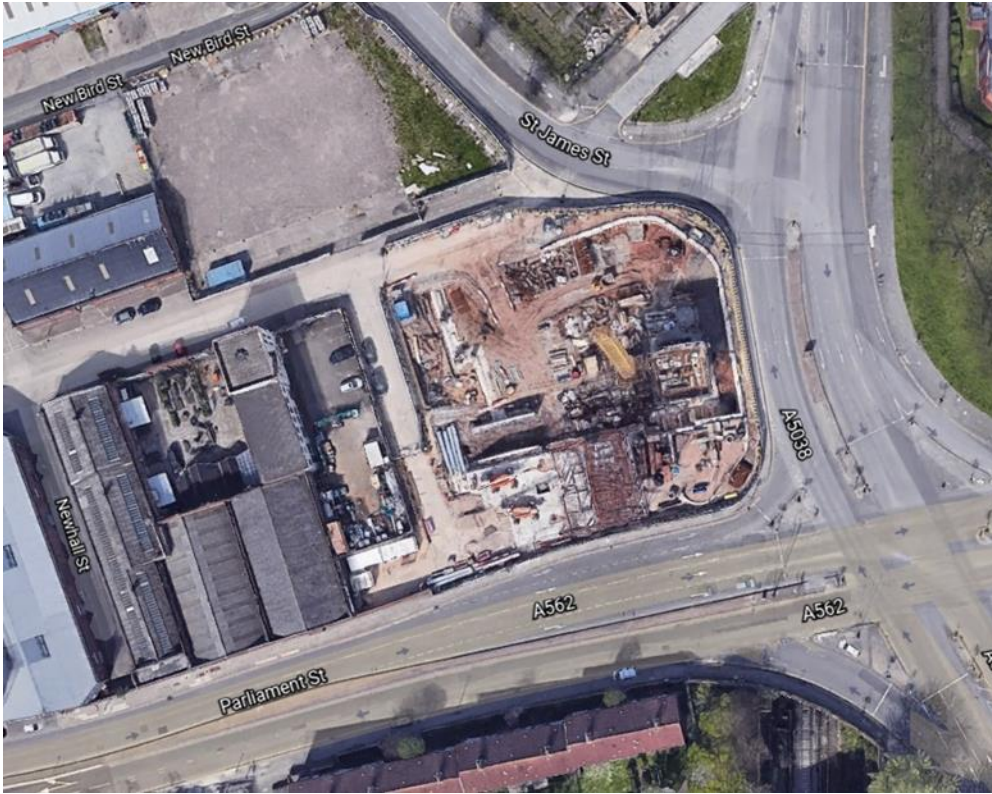


Land at corner of Upper Parliament Street & Great St George Street, Liverpool L1

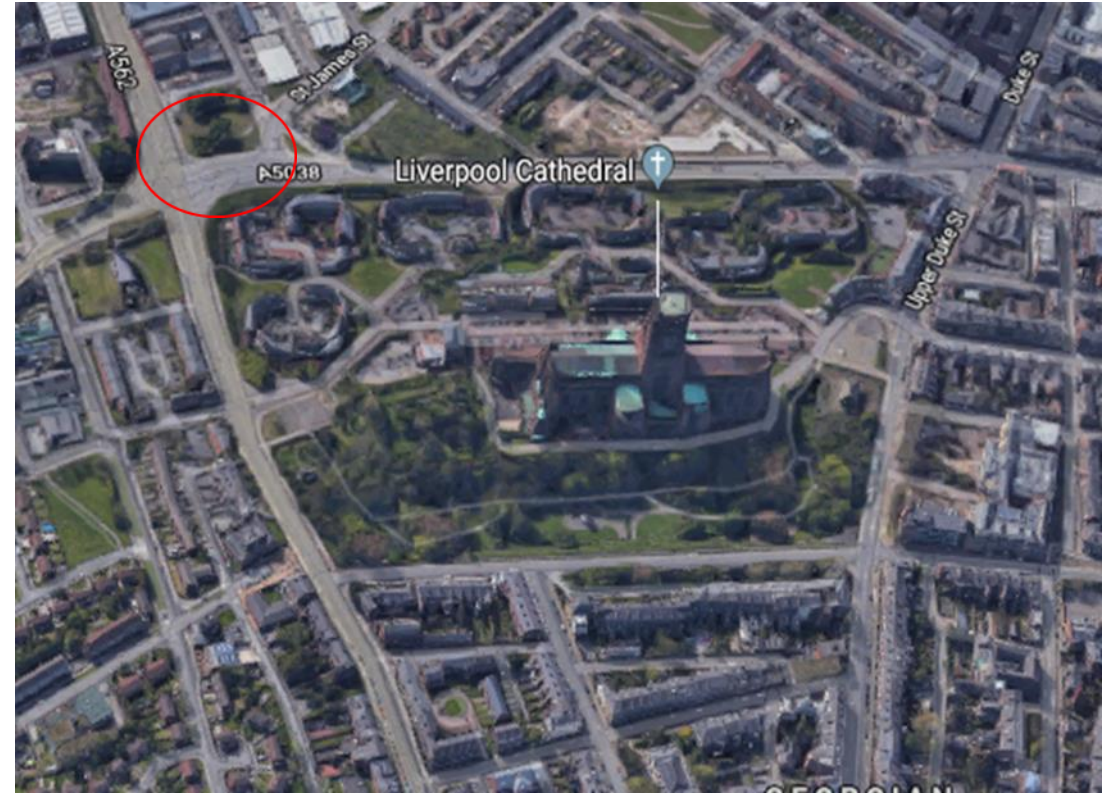
## The eleven storey new build development generally comprises:

- Demolition of adjoining structures and perimeter walls
- Site clearance and levelling
- Site investigations and trial holes
- Excavation and formation of new foundations
- Below and above ground drainage
- New ground supported and part suspended concrete floor slab
- Eighteen storey steel frame structure
- External clad and glazed envelope
- Suspended metal deck and concrete floors
- Flat roof structures and finishes
- Aluminium curtain walling, external windows and doors and shopfronts
- External balconies and balustrades
- Internal sub-division of retail units and apartments with non-loadbearing block and stud partitions
- Installation of plumbing services and mechanical services
- Installation of electrical services
- Installation of new lift car access
- Installation of kitchen and sanitary fittings
- New internal finishes, joinery fittings and decorations

# Site Location



Aerial View of the site prior to demolition



Aerial view of the site location of Parliament Square

# Building Structure

Parliament Square, Liverpool  
New Build Development

# Sub-Structure & Super-Structure Construction Progress

AUGUST 2022

Site investigations	100% complete
Site compound and temporary supplies	100% complete
Demolition and site clearance	100% complete
Ground infill and site levelling	100% complete
Piling foundations	100% complete
Retaining walls, concrete beam foundations	100% complete
Basement slab construction	100% complete
Ground floor slab construction	100% complete
Concrete deck floor construction to upper floors	45% complete
Lift and staircase core concrete structure	80% complete
Concrete frame structure	45% complete
Internal staircase structure	19% complete
Sub-structure masonry walls	0% complete
Structural framework forming external walls	0% complete
Scaffolding & mast climber access	0% complete
Flat roof covering including balconies	0% complete
Weatherboarding	0% complete
External windows / doors & curtain walling	0% complete
External wall cladding and insulation	0% complete

# Sub-Structure & Super-Structure Progress

AUGUST 2022



Block D – Viewed from Block B



Block D – Viewed from Greenland Street

# Sub-Structure & Super-Structure Progress

AUGUST 2022



Block D – Viewed from Crump Street



Block D – Viewed from Parliament Street



# Sub-Structure & Super-Structure Progress

AUGUST 2022



Block D – Viewed from Block B



Block D – Viewed from Crump Street

# Sub-Structure & Super-Structure Progress

AUGUST 2022



Cranes in operation



Site activity

# Sub-Structure & Super-Structure Progress

AUGUST 2022



Section B – Concrete slab pour ongoing



Section A – Temporary electrical supply installed

# Sub-Structure & Super-Structure Progress

AUGUST 2022



Section A – Formwork removed



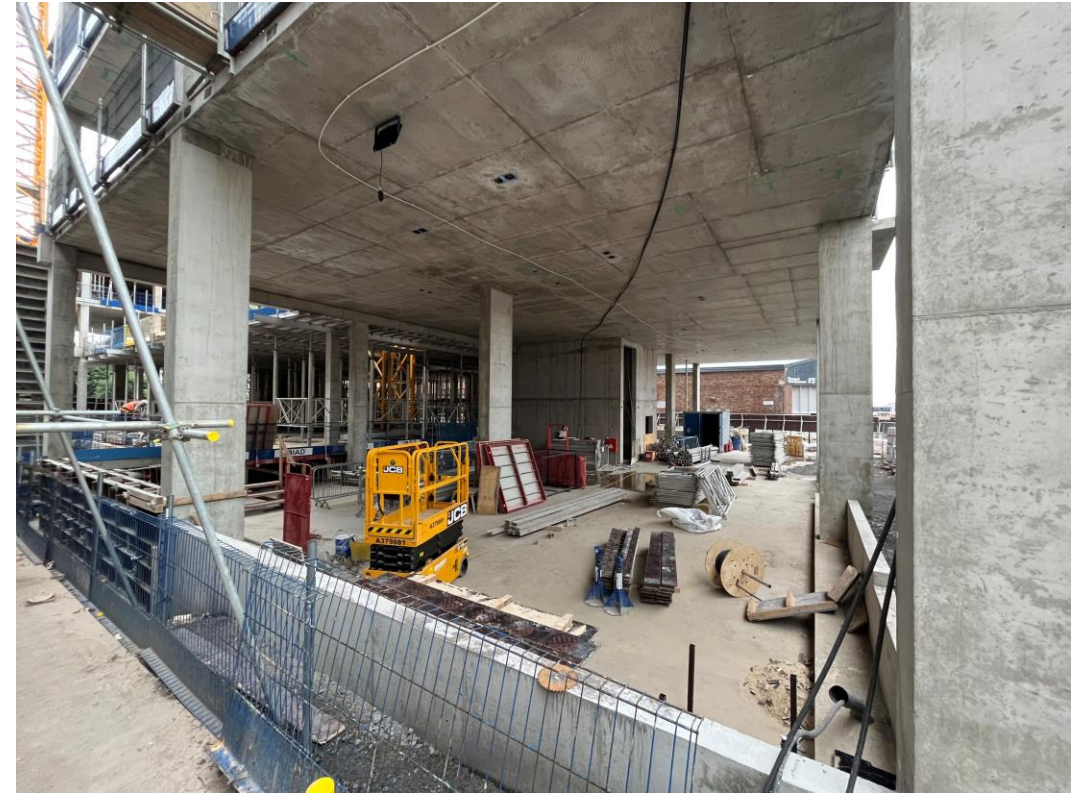
Section A – Concrete upstand

# Sub-Structure & Super-Structure Progress

AUGUST 2022



Section A – Site activity



Section A – Site activity

# Sub-Structure & Super-Structure Progress

AUGUST 2022



Section C – Formwork supports



Section A – Formwork in place for retaining wall

# Sub-Structure & Super-Structure Progress

AUGUST 2022



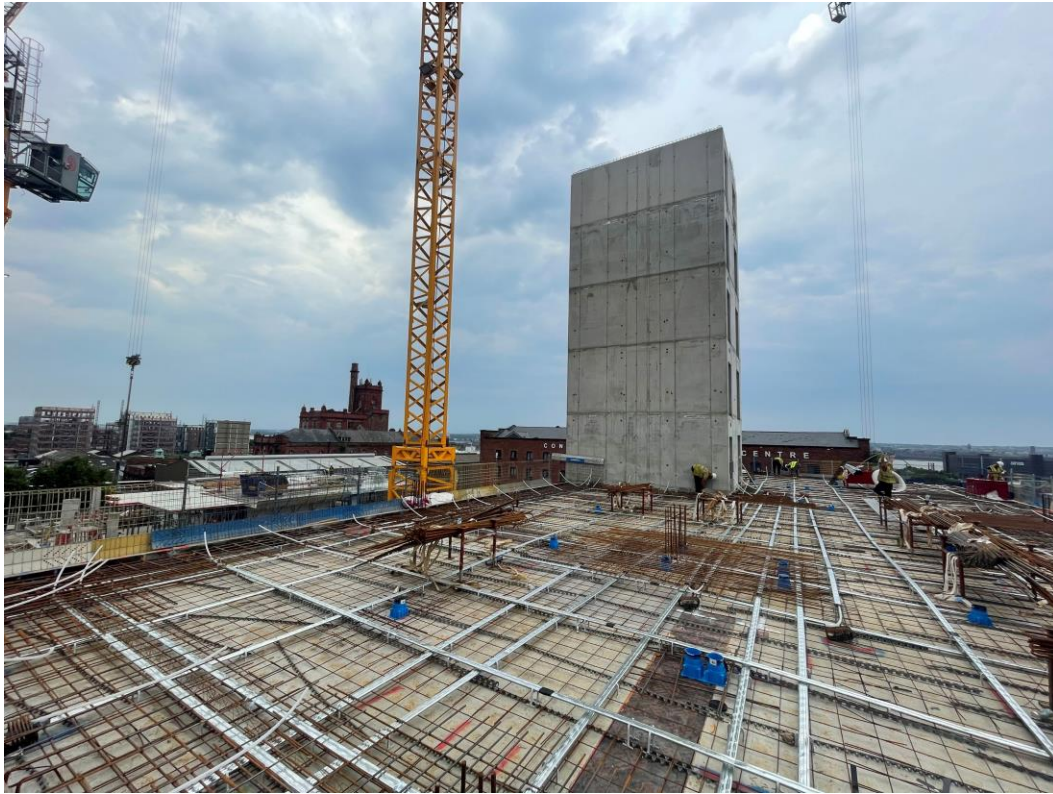
Section A – Level 2 formwork supports removed following slab pour



Section A – Reinforcement laid in preparation for Level 5 slab pour

# Sub-Structure & Super-Structure Progress

AUGUST 2022



Section A – Reinforcement laid in preparation for Level 5 slab pour



Section B – Level 4 slab formwork installation has commenced



# Sub-Structure & Super-Structure Progress

AUGUST 2022



Section A – Reinforced frame construction ongoing



Podium - Columns & slab pour ongoing

# Sub-Structure & Super-Structure Progress

AUGUST 2022



Section A – Formwork in place for retaining wall



Section C – Opening in floor slab for staircase installation.

# Sub-Structure & Super-Structure Progress

AUGUST 2022



Section C – Reinforced frame construction ongoing



Section C – Reinforced frame construction ongoing

# Sub-Structure & Super-Structure Progress

AUGUST 2022



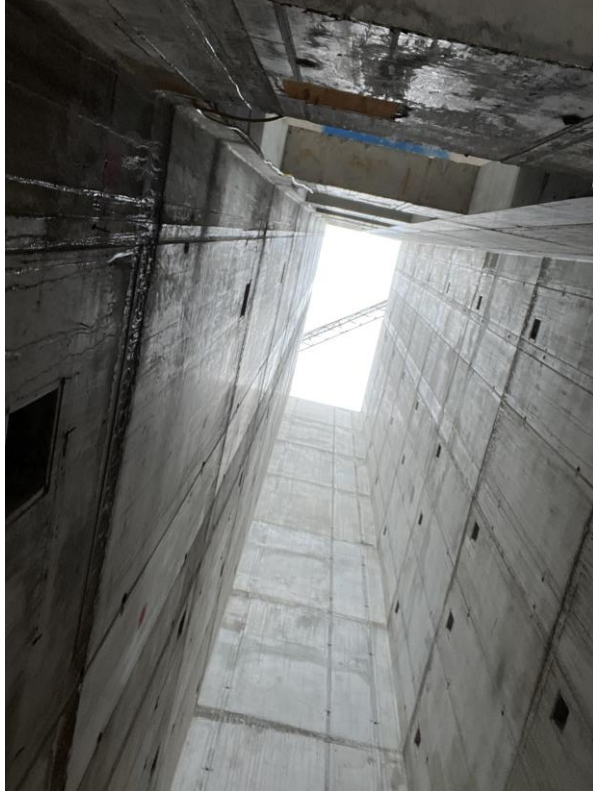
Section C – Opening in floor slab for staircase installation.



Section B – Reinforced frame construction ongoing

# Sub-Structure & Super-Structure Progress

AUGUST 2022



Staircore One – Casting complete



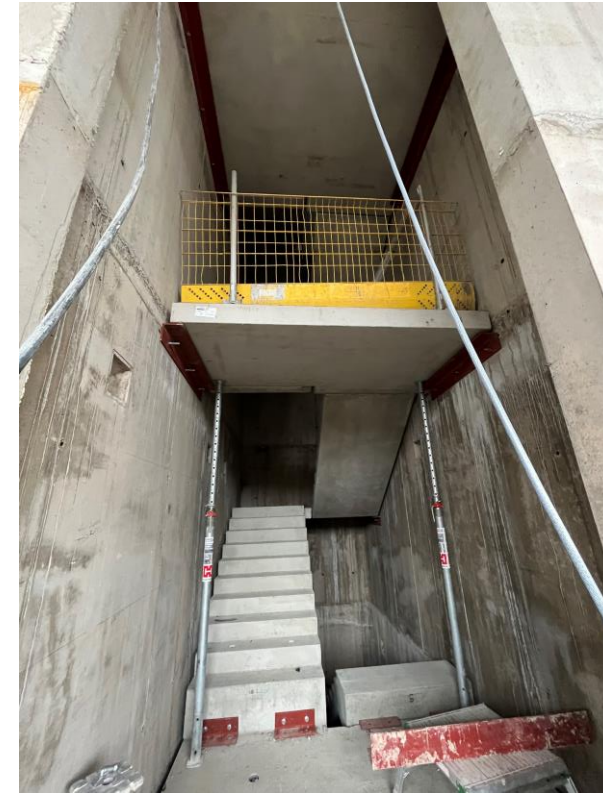
Section B – Haki staircase installed

# Sub-Structure & Super-Structure Progress

AUGUST 2022



Stair Core 1 - Concrete stair installation has commenced



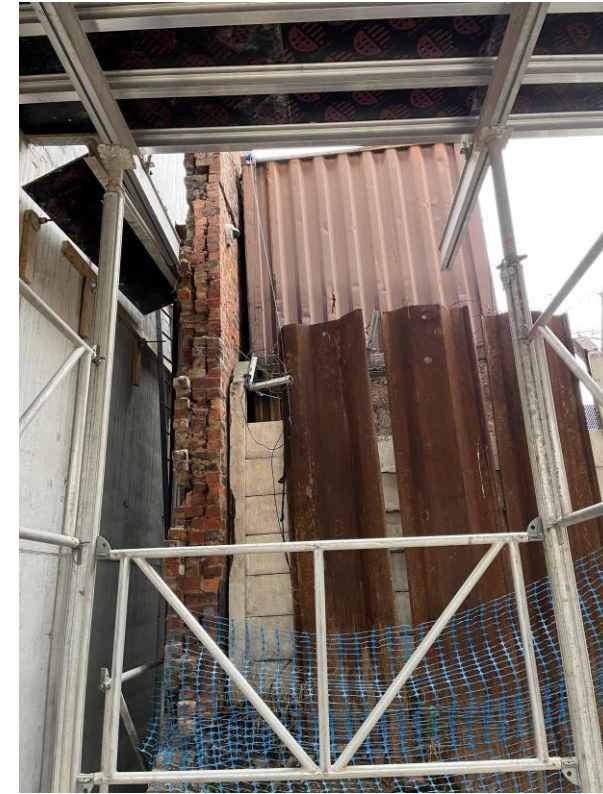
Stair Core 1 - Concrete stair installation has commenced

# Sub-Structure & Super-Structure Progress

AUGUST 2022



Section C – Formwork in place for Level 1 slab pour



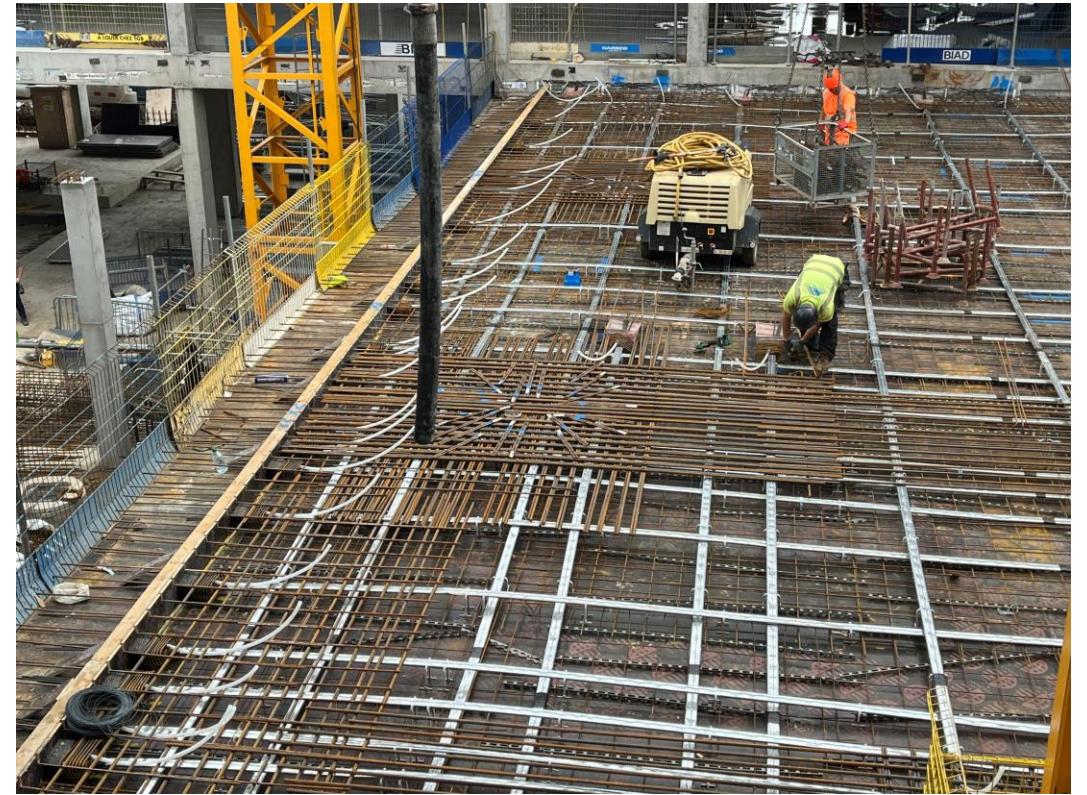
Section B – temporary supports in place for party wall

# Sub-Structure & Super-Structure Progress

AUGUST 2022



Podium – Reinforcement laid in preparation for slab pour



Podium – Reinforcement laid in preparation for slab pour



# Sub-Structure & Super-Structure Progress

AUGUST 2022



Podium – Slab pour commenced



Podium – Reinforcement laid in preparation for slab pour

# Sub-Structure & Super-Structure Progress

AUGUST 2022



Site activity



Section A – Reinforced concrete structure

# Sub-Structure & Super-Structure Progress

AUGUST 2022



Section C – Formwork in place for Level 1 slab pour



Stair Core 1 - Concrete stair installation has commenced

# Sub-Structure & Super-Structure Progress

AUGUST 2022



Section A – Reinforced frame construction ongoing



Section A – Reinforced frame construction ongoing

# Sub-Structure & Super-Structure Progress

AUGUST 2022



Site activity



Section A – Offload bay in use

# Sub-Structure & Super-Structure Progress

AUGUST 2022



Section A – Reinforced concrete structure up to level 5



Site activity

# Sub-Structure & Super-Structure Progress

AUGUST 2022



Section C – Formwork in place for Level 1 slab pour



Section C – Formwork in place for Level 1 slab pour

# Sub-Structure & Super-Structure Progress

AUGUST 2022



Section C – Formwork in place for Level 1 slab pour



Section C – Formwork in place for Level 1 slab pour



# Sub-Structure & Super-Structure Progress

AUGUST 2022



Site activity



Site activity

# Sub-Structure & Super-Structure Progress

AUGUST 2022



Party wall works



Podium - Columns & slab formwork in place.

# Sub-Structure & Super-Structure Progress

AUGUST 2022



Floor slab formwork onsite



Party wall steel support works ongoing

# Sub-Structure & Super-Structure Progress

AUGUST 2022



Formwork for retaining wall casting in place



Section B – Reinforced frame construction ongoing

# Sub-Structure & Super-Structure Progress

AUGUST 2022



Section A - Formwork for concrete upstand



Section C - Formwork for concrete upstand

TO FIND OUT MORE ABOUT

Parliament Square, Liverpool

PLEASE CONTACT

legacie

WWW.LEGACIE.CO.UK

By Appointment Only  
Unit 4 Connect Business Village  
Liverpool, L5 9PR  
+44 (0) 151 207 9990