

legacie



Parliament Square Block 'D' Investors Report

IR14 July 2022

Parliament Square – Phase 1 Block D

97 Luxury Apartments



Land at corner of Upper Parliament Street & Great St George Street, Liverpool L1

Schedule of Accommodation Block 'D'

Basement

- Car parking
- Sub-Station
- Plant

Ground Floor

- Retail units
- Refuse store
- Hard and soft landscaping

Floors 1 - 11

- 31 no. Studio Apartments
- 22no. 1 Bedroom Apartments
- 44 no. 2 Bedroom Apartments

New Build Two Phase Development to Create Residential Apartments Retail Units & Basement Parking

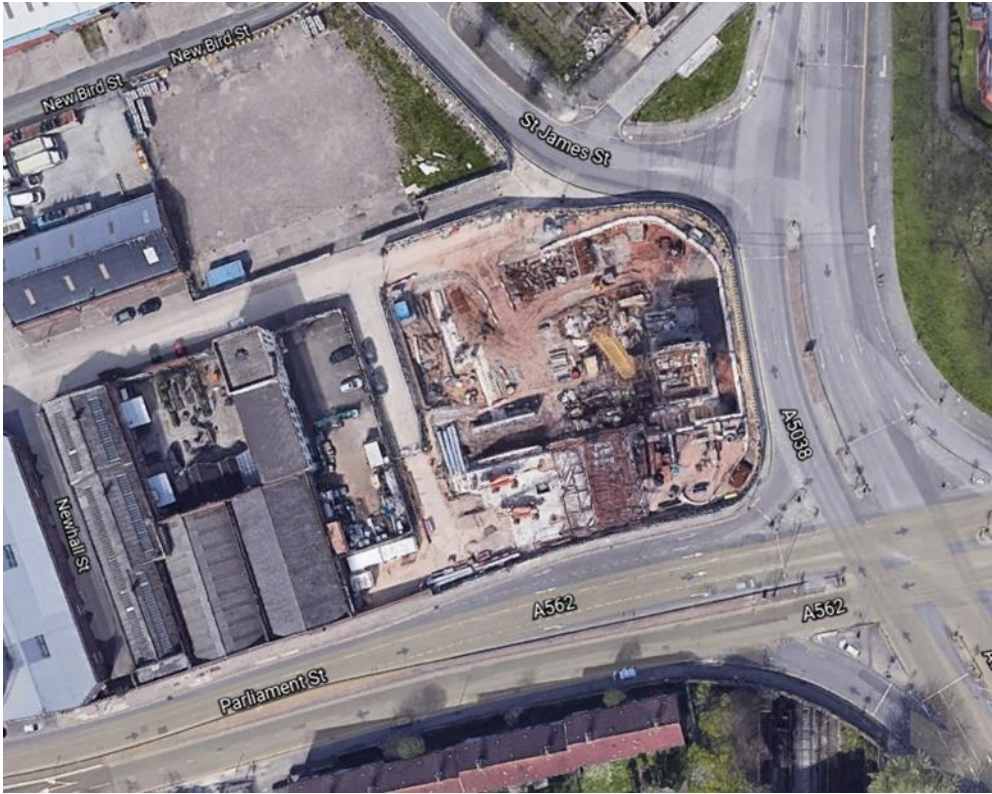


Land at corner of Upper Parliament Street & Great St George Street, Liverpool L1

The eleven storey new build development generally comprises:

- Demolition of adjoining structures and perimeter walls
- Site clearance and levelling
- Site investigations and trial holes
- Excavation and formation of new foundations
- Below and above ground drainage
- New ground supported and part suspended concrete floor slab
- Eighteen storey steel frame structure
- External clad and glazed envelope
- Suspended metal deck and concrete floors
- Flat roof structures and finishes
- Aluminium curtain walling, external windows and doors and shopfronts
- External balconies and balustrades
- Internal sub-division of retail units and apartments with non-loadbearing block and stud partitions
- Installation of plumbing services and mechanical services
- Installation of electrical services
- Installation of new lift car access
- Installation of kitchen and sanitary fittings
- New internal finishes, joinery fittings and decorations

Site Location



Aerial View of the site prior to demolition



Aerial view of the site location of Parliament Square

Building Structure

Parliament Square, Liverpool
New Build Development

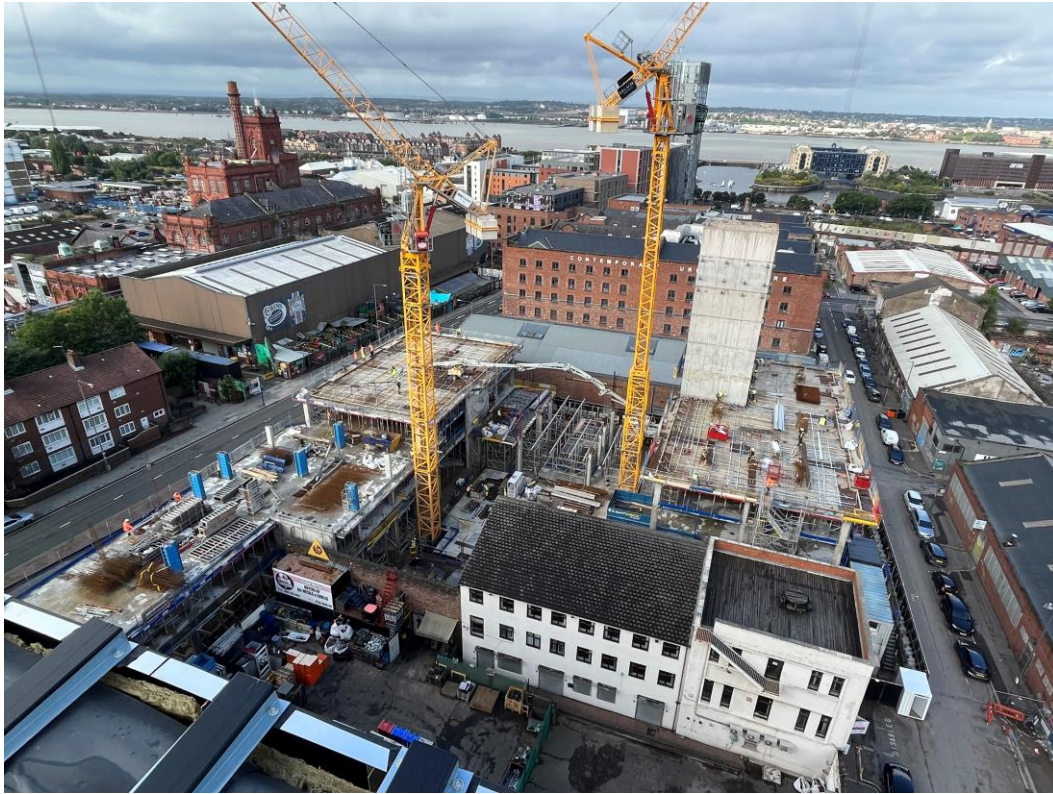
Sub-Structure & Super-Structure Construction Progress

JULY 2022

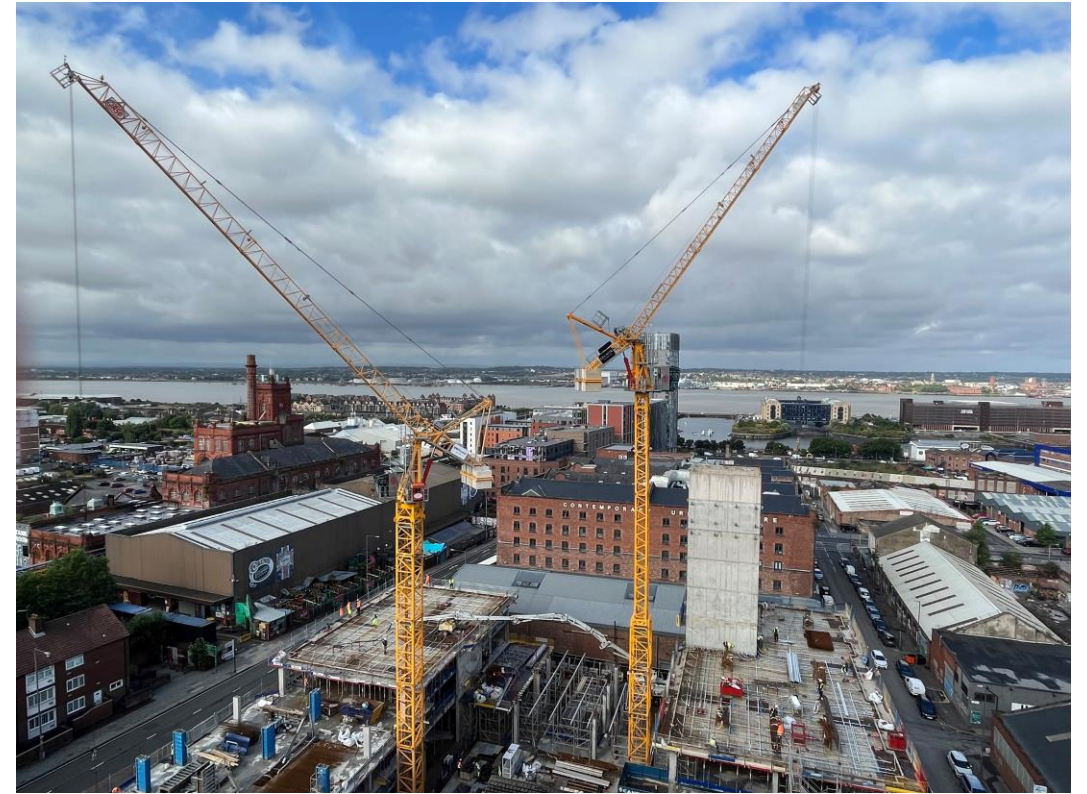
Site investigations	100% complete
Site compound and temporary supplies	100% complete
Demolition and site clearance	100% complete
Ground infill and site levelling	100% complete
Piling foundations	100% complete
Retaining walls, concrete beam foundations	100% complete
Basement slab construction	100% complete
Ground floor slab construction	80% complete
Concrete deck floor construction to upper floors	42% complete
Lift and staircase core concrete structure	78% complete
Concrete frame structure	42% complete
Internal staircase structure	0% complete
Sub-structure masonry walls	0% complete
Structural framework forming external walls	0% complete
Scaffolding & mast climber access	0% complete
Flat roof covering including balconies	0% complete
Weatherboarding	0% complete
External windows / doors & curtain walling	0% complete
External wall cladding and insulation	0% complete

Sub-Structure & Super-Structure Progress

JULY 2022



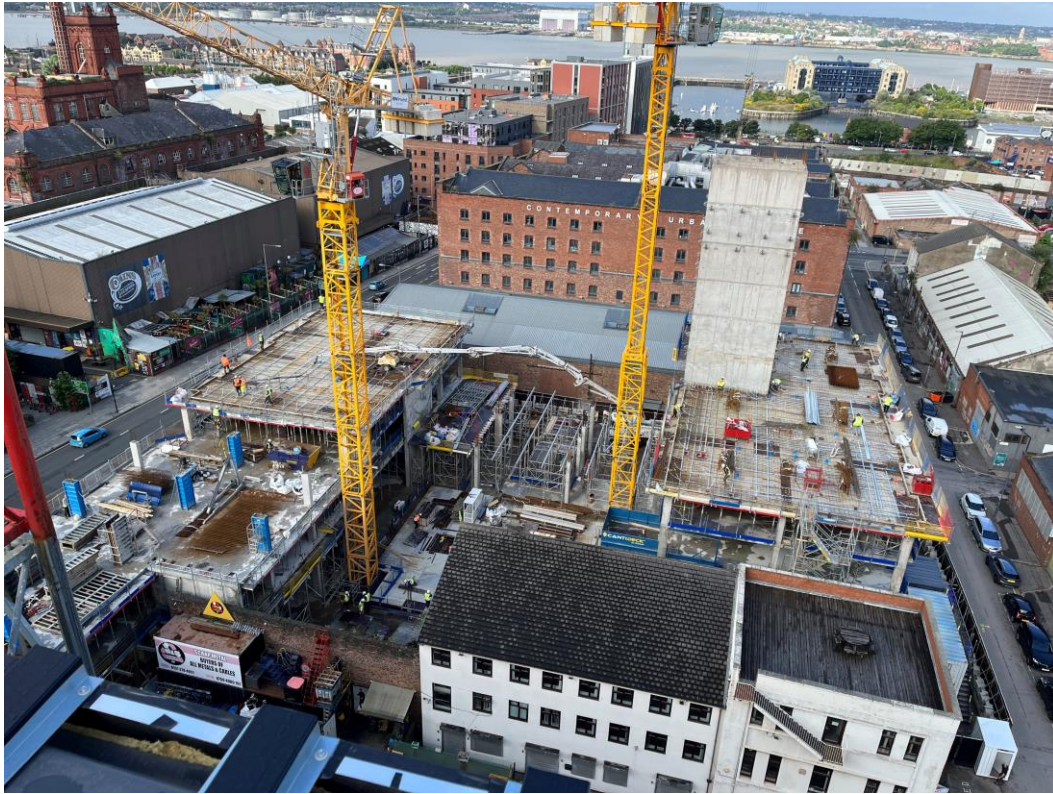
Block D – Viewed from Block B Roof



Block D – Viewed from Block B Roof

Sub-Structure & Super-Structure Progress

JULY 2022



Block D – Viewed from Block B Roof



Block D – Viewed from Block B Roof

Sub-Structure & Super-Structure Progress

JULY 2022



Block D – Viewed from Block B Roof



Zone A – Reinforced concrete frame construction ongoing

Sub-Structure & Super-Structure Progress

JULY 2022



Block D – Viewed from Parliament Street



Block D – Viewed from Parliament Street

Sub-Structure & Super-Structure Progress

JULY 2022



Block D – Viewed from Parliament Street



Block D – Viewed from Parliament Street

Sub-Structure & Super-Structure Progress

JULY 2022



Block D – Viewed from Greenland Street



Block D – Viewed from Parliament Street

Sub-Structure & Super-Structure Progress

JULY 2022



Zone A – Reinforced concrete frame construction ongoing



Block D – Viewed from Parliament Street

Sub-Structure & Super-Structure Progress

JULY 2022



Block D – Reinforced concrete frame construction ongoing



Block D – Reinforced concrete frame construction ongoing

Sub-Structure & Super-Structure Progress

JULY 2022



Block D – Reinforced concrete frame construction ongoing



Zone A – Stair core construction complete

Sub-Structure & Super-Structure Progress

JULY 2022



Block D – Viewed from Parliament Street



Zone A – Stair core construction complete

Sub-Structure & Super-Structure Progress

JULY 2022



Site activity



Site activity

Sub-Structure & Super-Structure Progress

JULY 2022



Zone A – Formwork for upper floor slabs installed



Zone C – Formwork for upper floor slabs installed

Sub-Structure & Super-Structure Progress

JULY 2022



Zone C – Formwork for upper floor slabs installed



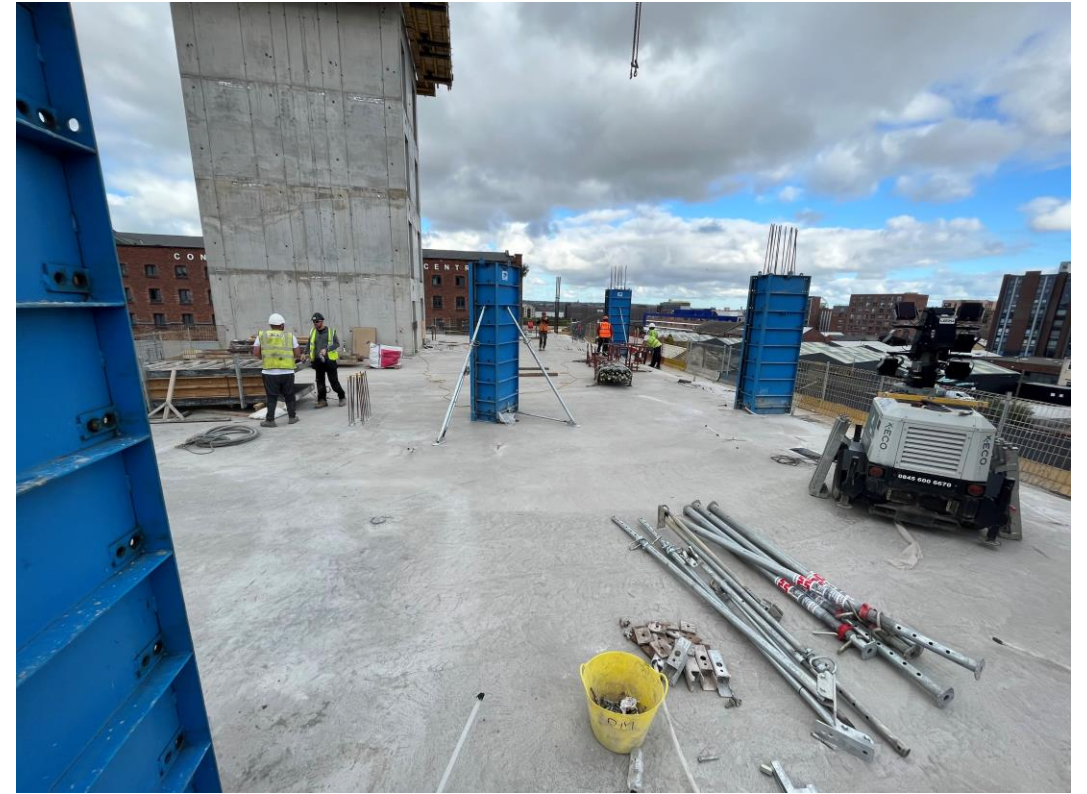
Zone B – 2nd Floor slab cast

Sub-Structure & Super-Structure Progress

JULY 2022



Site activity



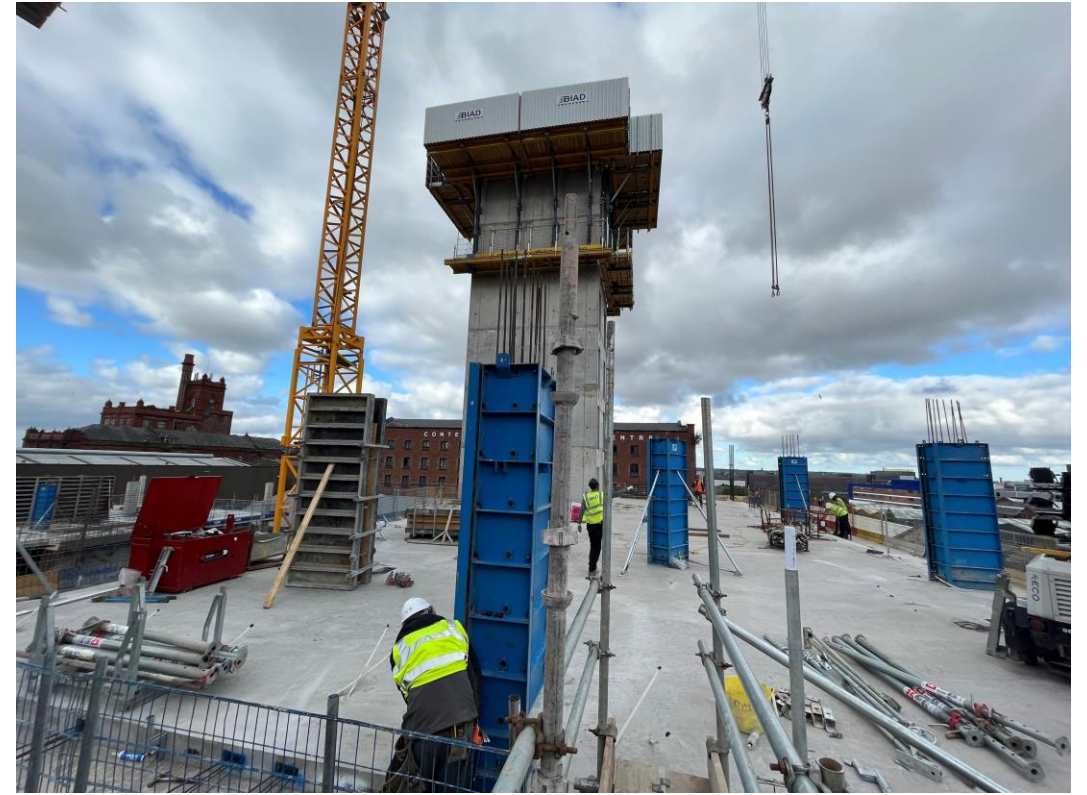
Zone A – 3rd Floor columns cast

Sub-Structure & Super-Structure Progress

JULY 2022



Zone A – 3rd Floor columns cast



Zone A – 3rd Floor columns cast

Sub-Structure & Super-Structure Progress

JULY 2022



Zone A – Reinforced concrete frame construction ongoing



Site activity

Sub-Structure & Super-Structure Progress

JULY 2022



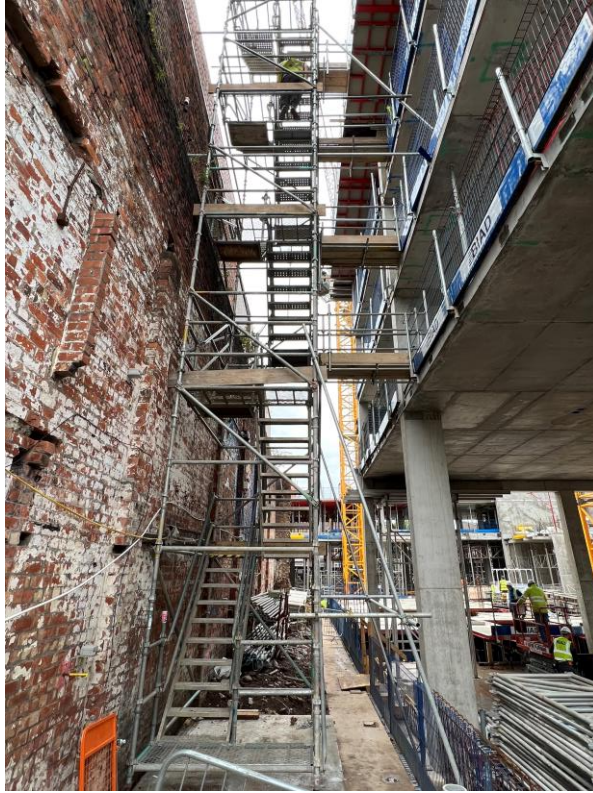
Zone A – Reinforced frame construction



Zone A – Reinforced frame construction

Sub-Structure & Super-Structure Progress

JULY 2022



Zone A – Temporary access formed



Zone A – Reinforced frame construction

Sub-Structure & Super-Structure Progress

JULY 2022



Zone C – Shuttering in place for Ground Floor slab pour



Zone C – Concrete reinforcement onsite for installation

Sub-Structure & Super-Structure Progress

JULY 2022



Zone A – Reinforced frame construction ongoing



Zone B – Concrete slab pour ongoing

Sub-Structure & Super-Structure Progress

JULY 2022



Upper foundation pour



Upper foundation pour

Sub-Structure & Super-Structure Progress

JULY 2022



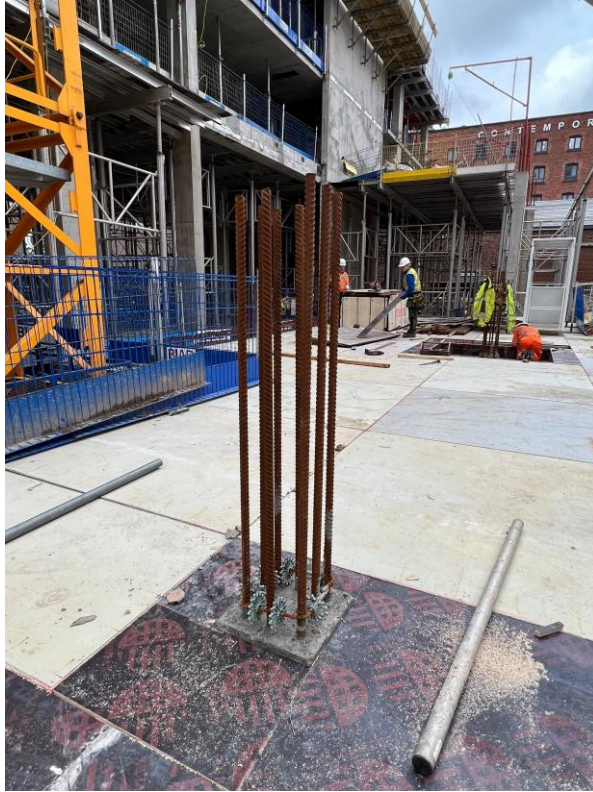
Zone A – Reinforced frame construction ongoing



Site activity

Sub-Structure & Super-Structure Progress

JULY 2022



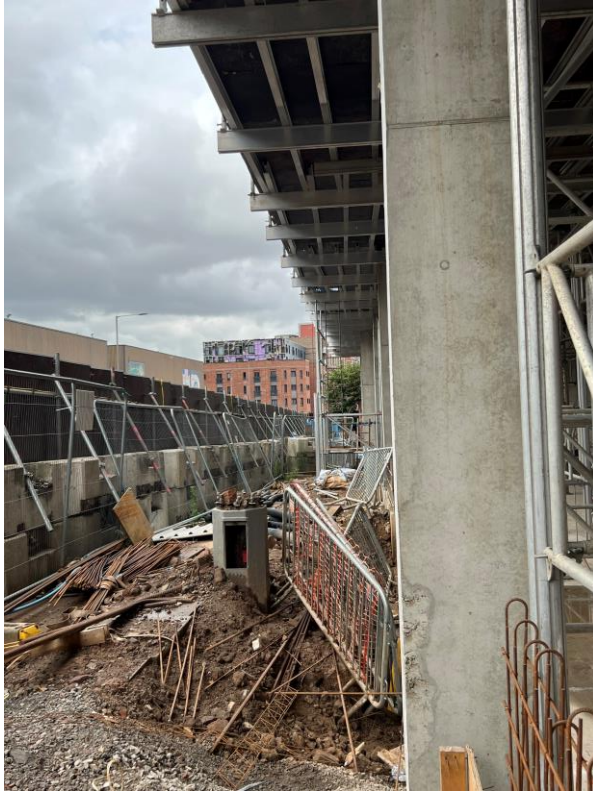
Zone C – Concrete column reinforcement in place



Zone A – Reinforced frame construction ongoing

Sub-Structure & Super-Structure Progress

JULY 2022



Zone A – reinforced concrete frame construction ongoing



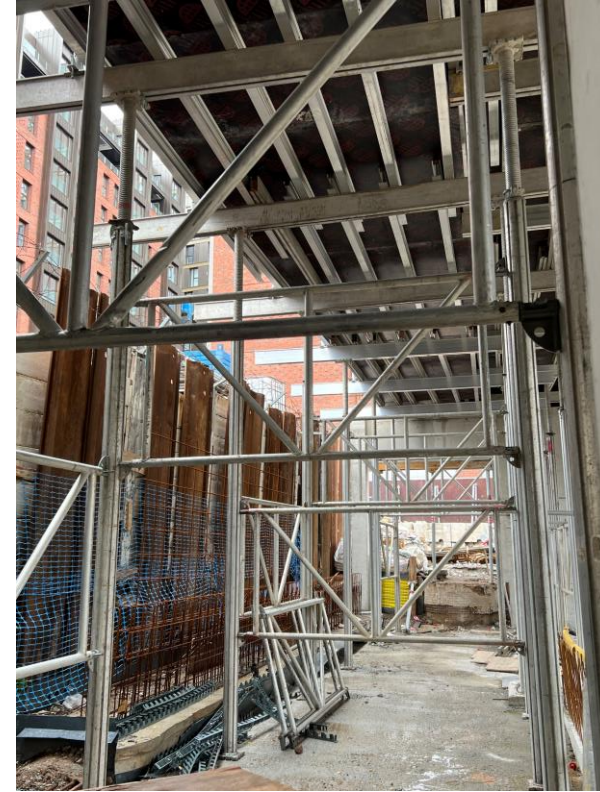
Formwork for slab casting in place

Sub-Structure & Super-Structure Progress

JULY 2022



Formwork for slab casting in place



Formwork for slab casting in place

Sub-Structure & Super-Structure Progress

JULY 2022



Reinforcement for concrete upstand



Reinforcement for concrete upstand

Sub-Structure & Super-Structure Progress

JULY 2022



Reinforcement onsite for installation



Formwork onsite for casting

Sub-Structure & Super-Structure Progress

JULY 2022



Formwork for slab casting in place



Formwork for slab casting in place

Sub-Structure & Super-Structure Progress

JULY 2022



Formwork for upper floor slabs installed



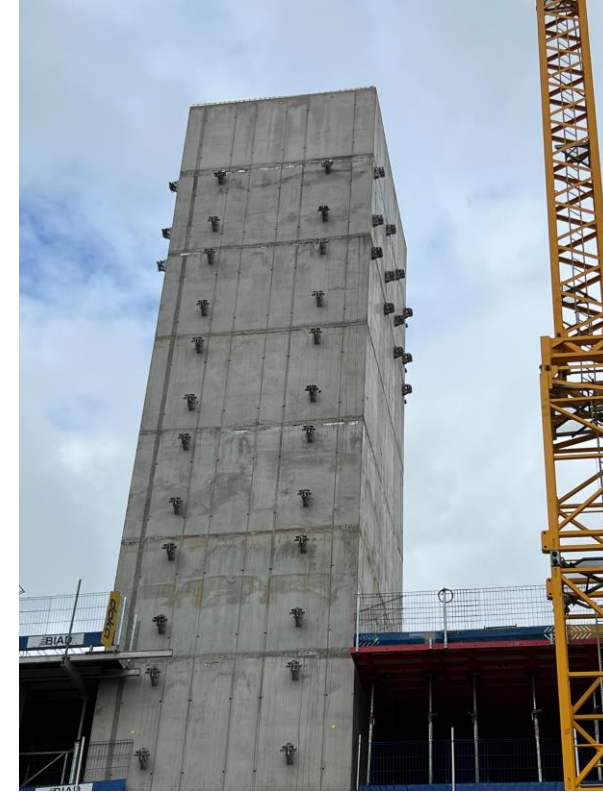
Formwork for upper floor slabs installed

Sub-Structure & Super-Structure Progress

JULY 2022



Shuttering in place for retaining wall concrete pour



Stair Core One nearing completion

Sub-Structure & Super-Structure Progress

JULY 2022



Site activity



Zone A – reinforced concrete frame construction ongoing

TO FIND OUT MORE ABOUT

Parliament Square, Liverpool

PLEASE CONTACT

legacie

WWW.LEGACIE.CO.UK

By Appointment Only
Unit 4 Connect Business Village
Liverpool, L5 9PR
+44 (0) 151 207 9990