

legacie



Parliament Square
Block 'D'
Investors Report

IR13 June 2022

Parliament Square – Phase 1 Block D

97 Luxury Apartments



Land at corner of Upper Parliament Street & Great St George Street, Liverpool L1

Schedule of Accommodation Block 'D'

Basement

- Car parking
- Sub-Station
- Plant

Ground Floor

- Retail units
- Refuse store
- Hard and soft landscaping

Floors 1 - 11

- 31 no. Studio Apartments
- 22no. 1 Bedroom Apartments
- 44 no. 2 Bedroom Apartments

New Build Two Phase Development to Create Residential Apartments Retail Units & Basement Parking

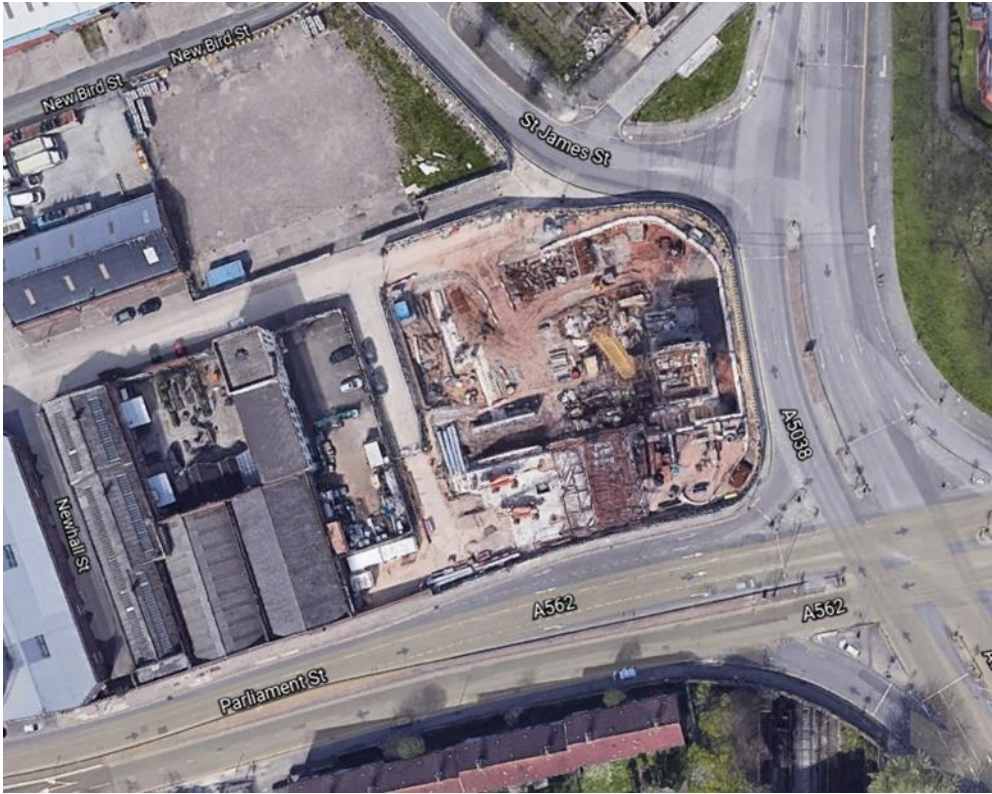


Land at corner of Upper Parliament Street & Great St George Street, Liverpool L1

The eleven storey new build development generally comprises:

- Demolition of adjoining structures and perimeter walls
- Site clearance and levelling
- Site investigations and trial holes
- Excavation and formation of new foundations
- Below and above ground drainage
- New ground supported and part suspended concrete floor slab
- Eighteen storey steel frame structure
- External clad and glazed envelope
- Suspended metal deck and concrete floors
- Flat roof structures and finishes
- Aluminium curtain walling, external windows and doors and shopfronts
- External balconies and balustrades
- Internal sub-division of retail units and apartments with non-loadbearing block and stud partitions
- Installation of plumbing services and mechanical services
- Installation of electrical services
- Installation of new lift car access
- Installation of kitchen and sanitary fittings
- New internal finishes, joinery fittings and decorations

Site Location



Aerial View of the site prior to demolition



Aerial view of the site location of Parliament Square

Building Structure

Parliament Square, Liverpool
New Build Development

Sub-Structure & Super-Structure Construction Progress

JUNE 2022

Site investigations	100% complete
Site compound and temporary supplies	100% complete
Demolition and site clearance	100% complete
Ground infill and site levelling	100% complete
Piling foundations	100% complete
Retaining walls, concrete beam foundations	100% complete
Basement slab construction	80% complete
Ground floor slab construction	75% complete
Concrete deck floor construction to upper floors	20% complete
Lift and staircase core concrete structure	50% complete
Concrete frame structure	32% complete
Internal staircase structure	0% complete
Sub-structure masonry walls	0% complete
Structural framework forming external walls	0% complete
Scaffolding & mast climber access	0% complete
Flat roof covering including balconies	0% complete
Weatherboarding	0% complete
External windows / doors & curtain walling	0% complete
External wall cladding and insulation	0% complete

Sub-Structure & Super-Structure Progress

JUNE 2022



Site access gate from Greenland Street



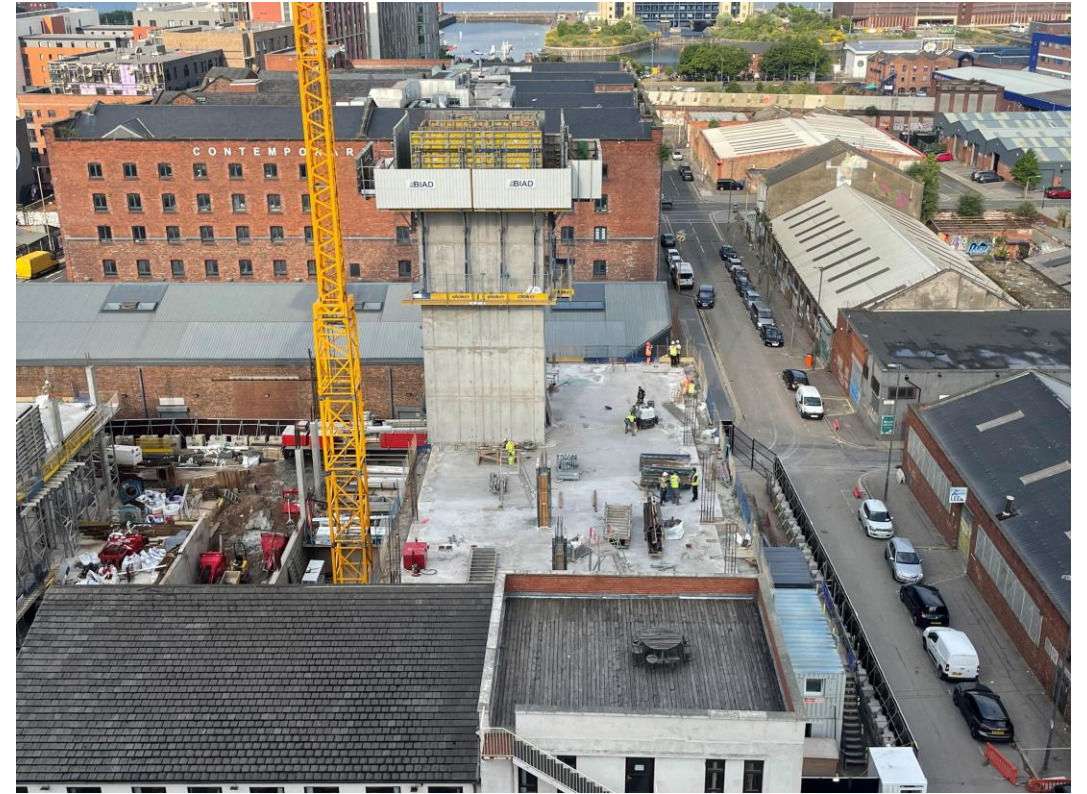
New site hoarding installed

Sub-Structure & Super-Structure Progress

JUNE 2022



Block D – Viewed from Block C



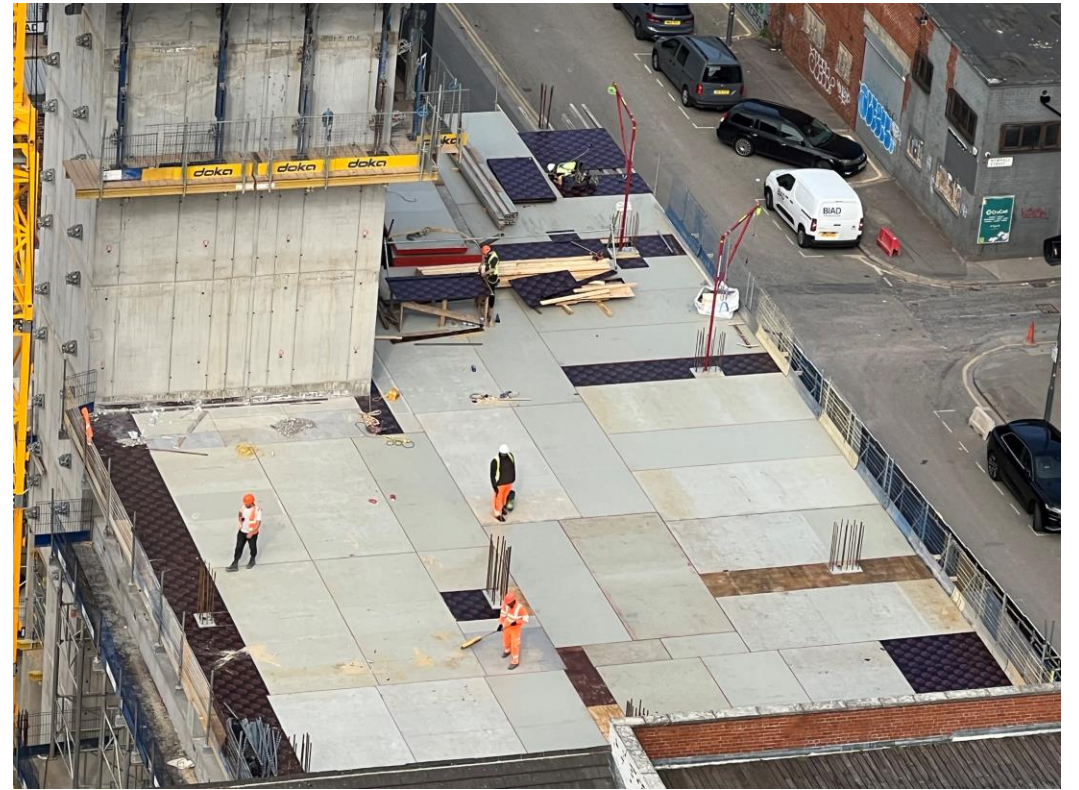
Block D – Viewed from Block B

Sub-Structure & Super-Structure Progress

JUNE 2022



Reinforcement installation to first floor slab



First floor slab cast

Sub-Structure & Super-Structure Progress

JUNE 2022



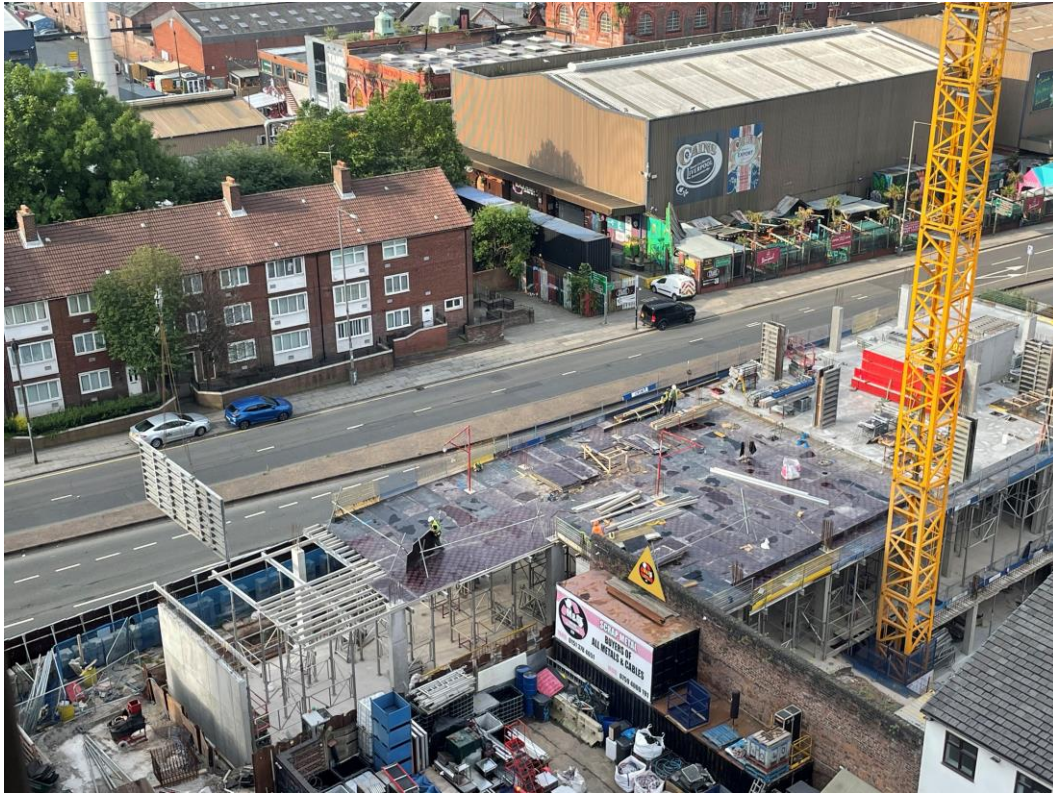
Staircore 2 construction ongoing



Block D – Viewed from Block B

Sub-Structure & Super-Structure Progress

JUNE 2022



Reinforcement installation to first floor slab



Reinforcement installation to first floor slab

Sub-Structure & Super-Structure Progress

JUNE 2022



Zone A – Reinforced concrete frame construction ongoing



Site activity

Sub-Structure & Super-Structure Progress

JUNE 2022



Site activity



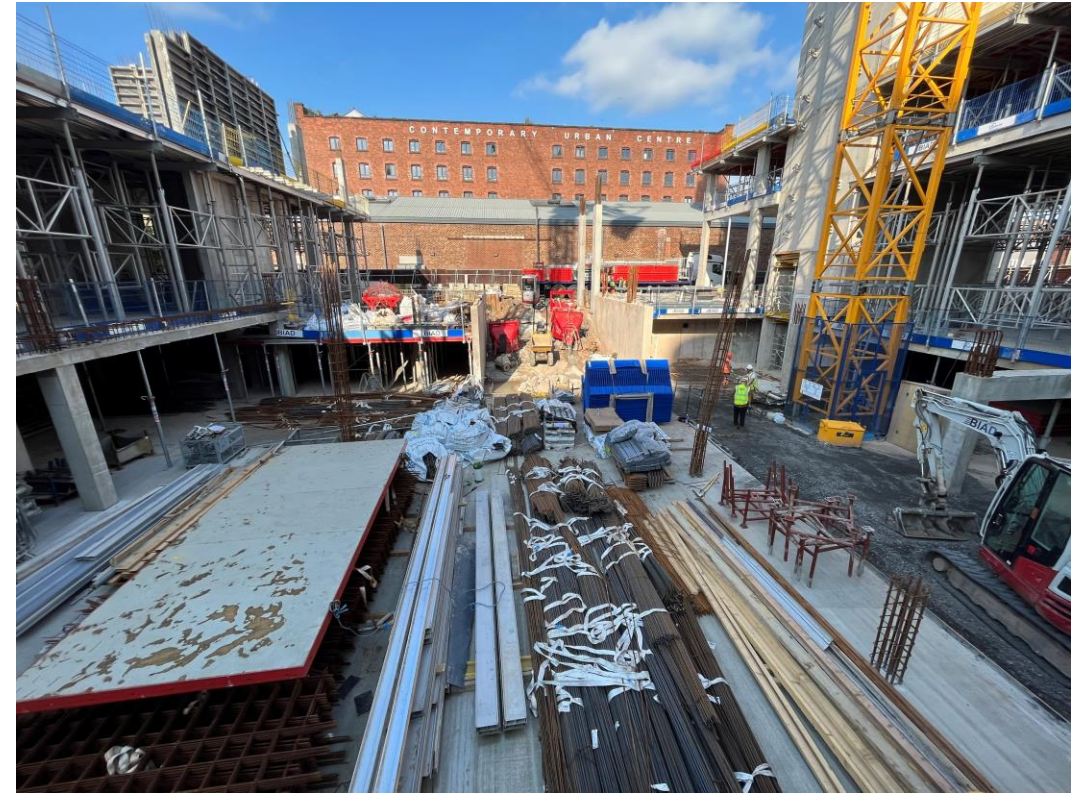
Site activity

Sub-Structure & Super-Structure Progress

JUNE 2022



Zone C – Reinforced frame construction ongoing



Site activity

Sub-Structure & Super-Structure Progress

JUNE 2022



Zone C – Reinforced frame construction ongoing



Contiguous wall installed

Sub-Structure & Super-Structure Progress

JUNE 2022



Zone C – Reinforced frame construction ongoing



Zone A – Reinforced frame construction ongoing

Sub-Structure & Super-Structure Progress

JUNE 2022



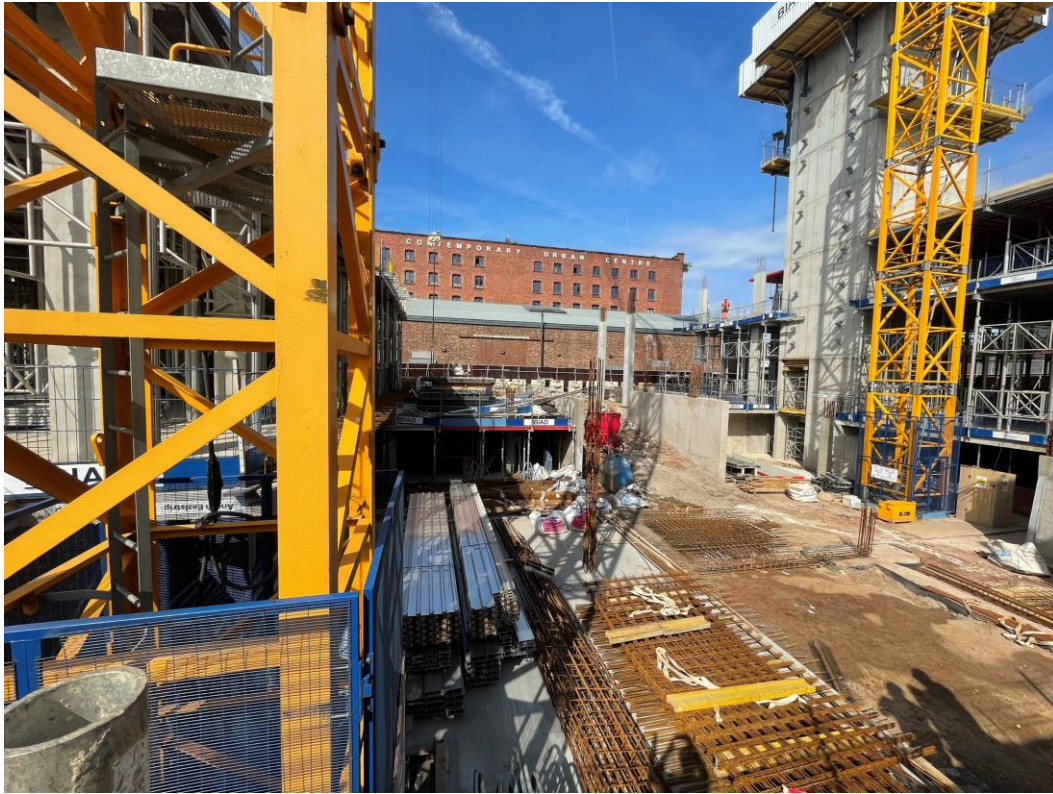
Zone C – Reinforced frame construction ongoing



Ground floor slab cast

Sub-Structure & Super-Structure Progress

JUNE 2022



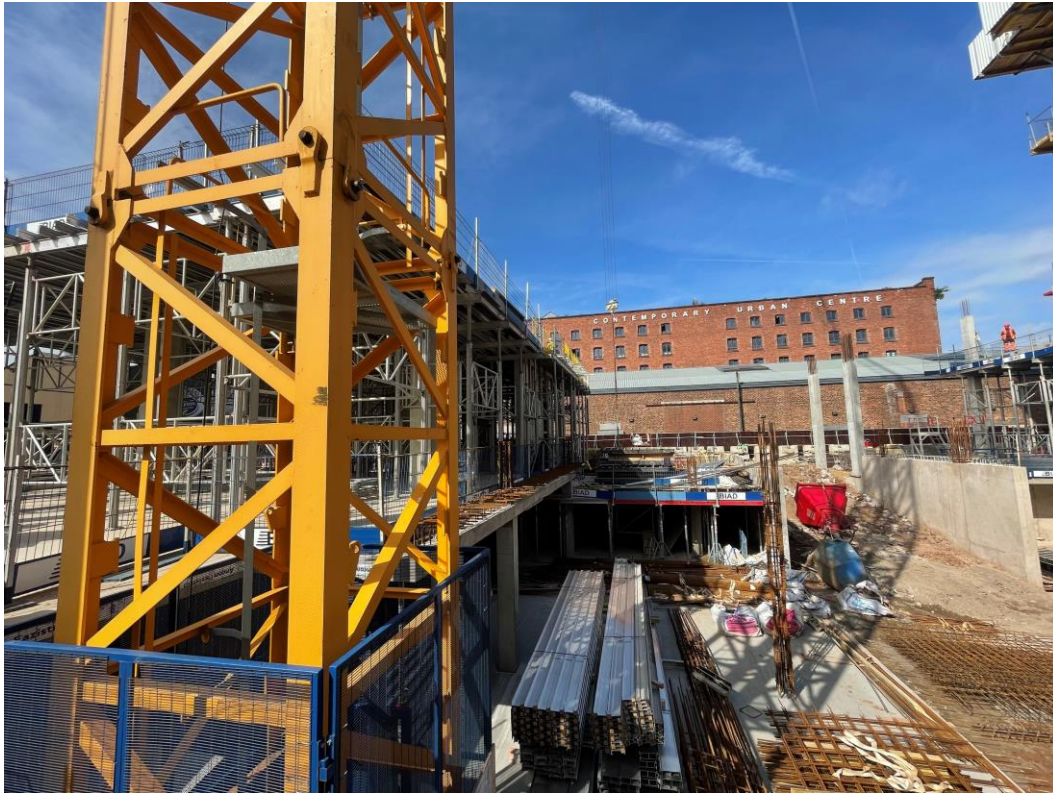
Site activity



Site activity

Sub-Structure & Super-Structure Progress

JUNE 2022



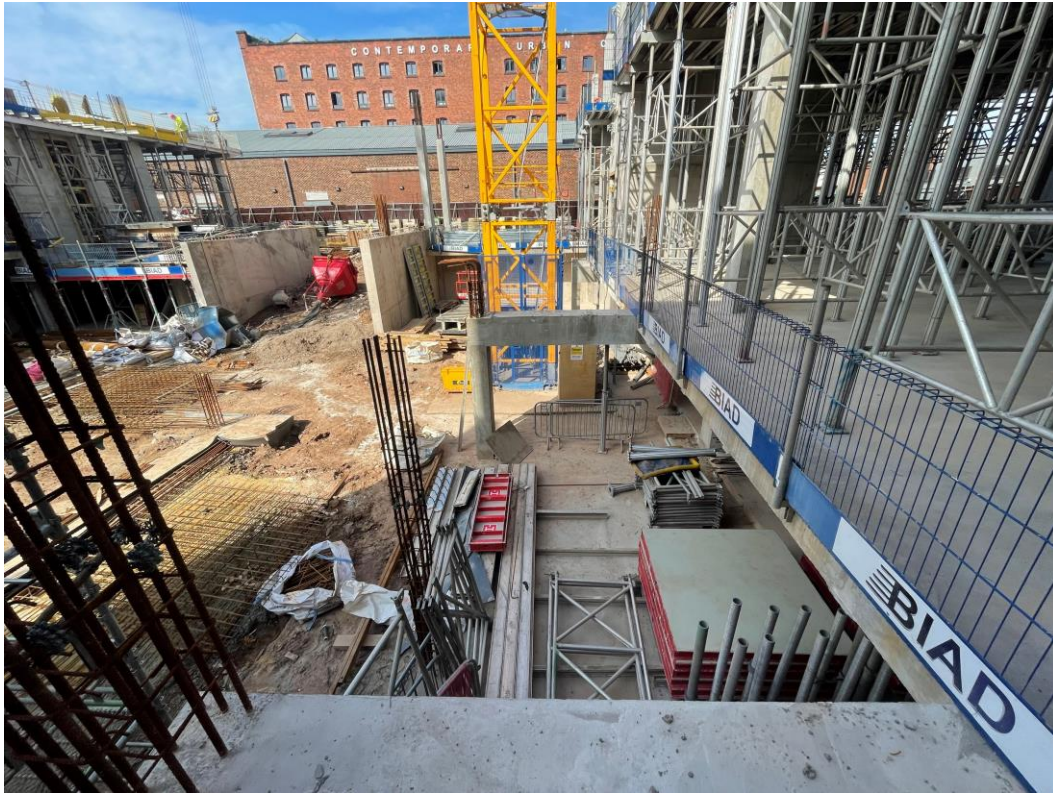
Site activity



Ground floor columns cast

Sub-Structure & Super-Structure Progress

JUNE 2022



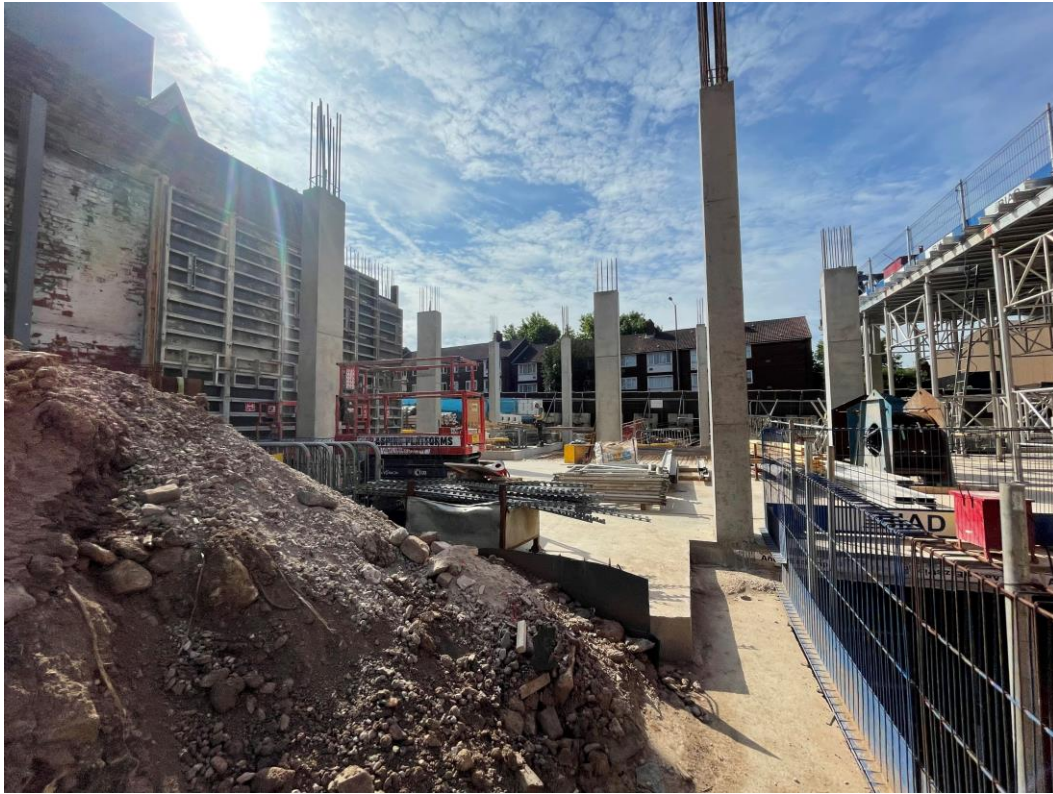
Site activity



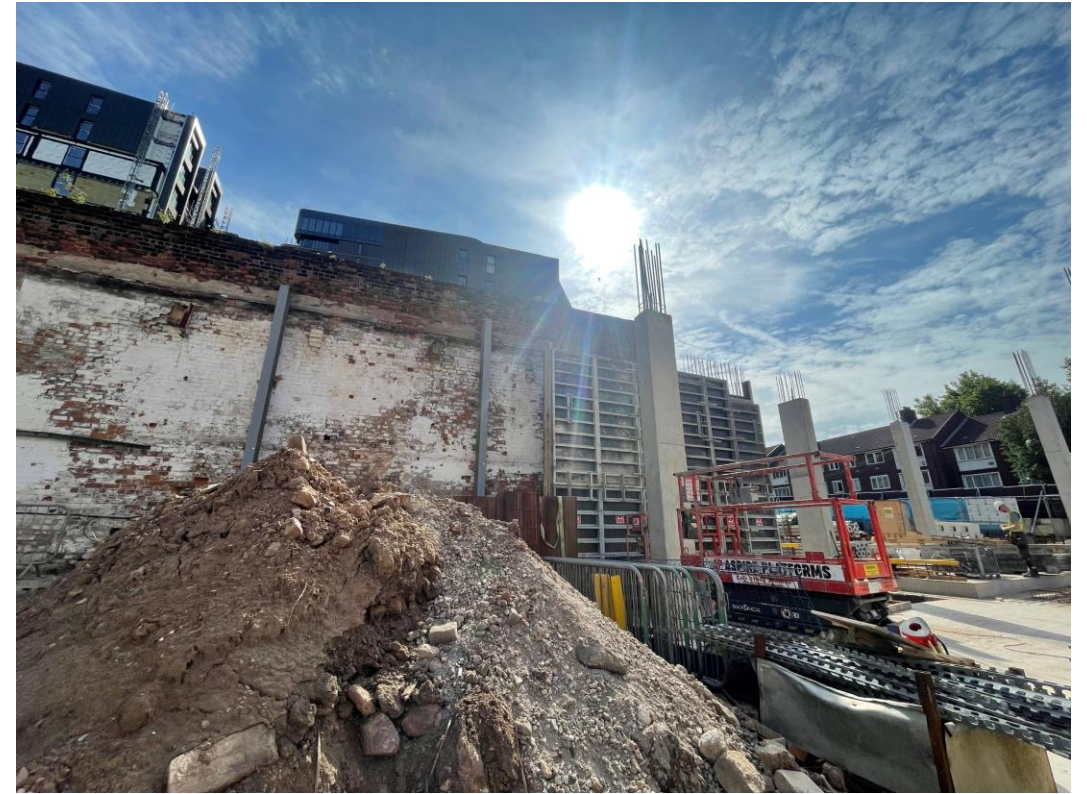
First Floor beam cast

Sub-Structure & Super-Structure Progress

JUNE 2022



Ground floor column cast



Site activity

Sub-Structure & Super-Structure Progress

JUNE 2022



Formwork for retaining wall installed



Ground Floor columns cast

Sub-Structure & Super-Structure Progress

JUNE 2022



Formwork for upper floor slabs installed



Formwork for upper floor slabs installed

Sub-Structure & Super-Structure Progress

JUNE 2022



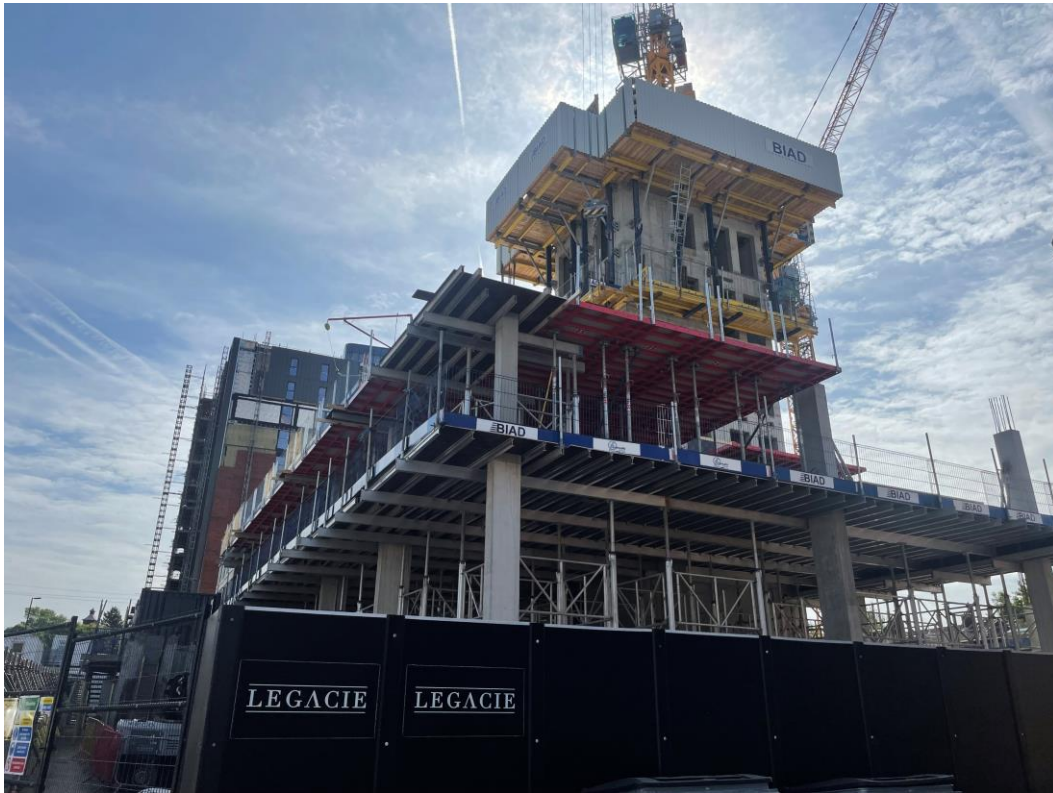
Staircore 2 under construction



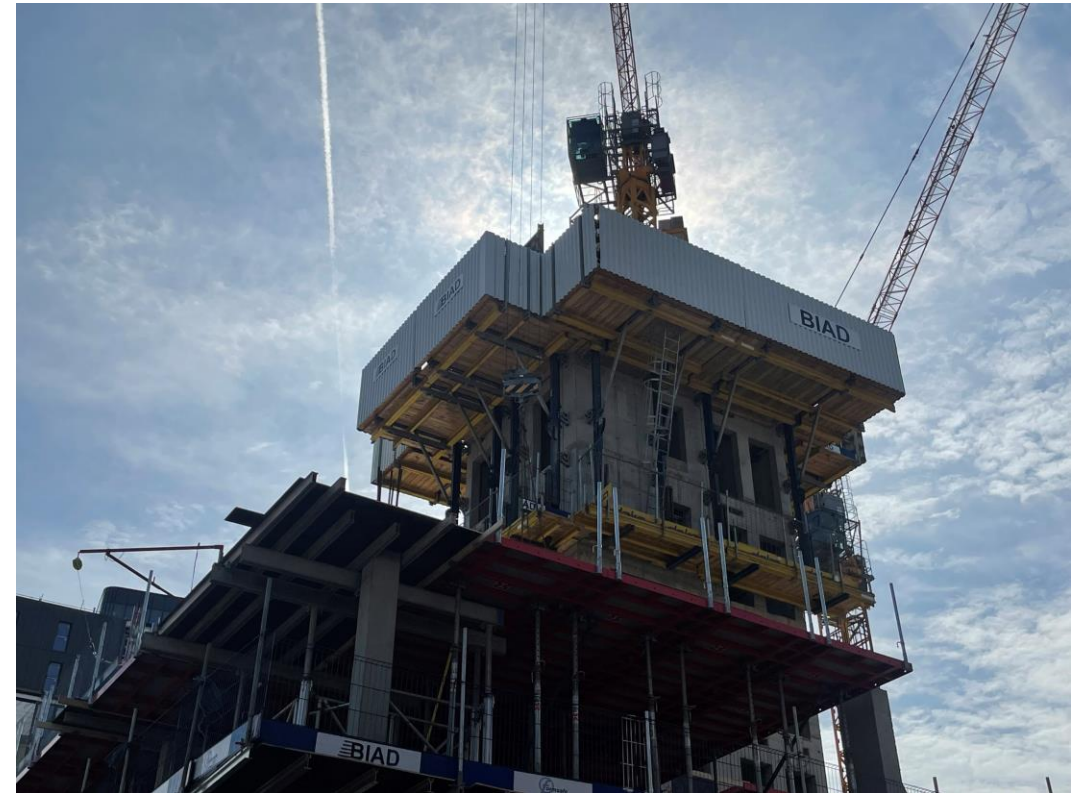
Zone A – reinforced concrete frame construction ongoing

Sub-Structure & Super-Structure Progress

JUNE 2022



Zone A – reinforced concrete frame construction ongoing



Staircore 2 under construction

Sub-Structure & Super-Structure Progress

JUNE 2022



Zone A – reinforced concrete frame construction ongoing



Zone A – reinforced concrete frame construction ongoing

Sub-Structure & Super-Structure Progress

JUNE 2022



Zone A – reinforced concrete frame construction ongoing



Zone A – reinforced concrete frame construction ongoing

Sub-Structure & Super-Structure Progress

JUNE 2022



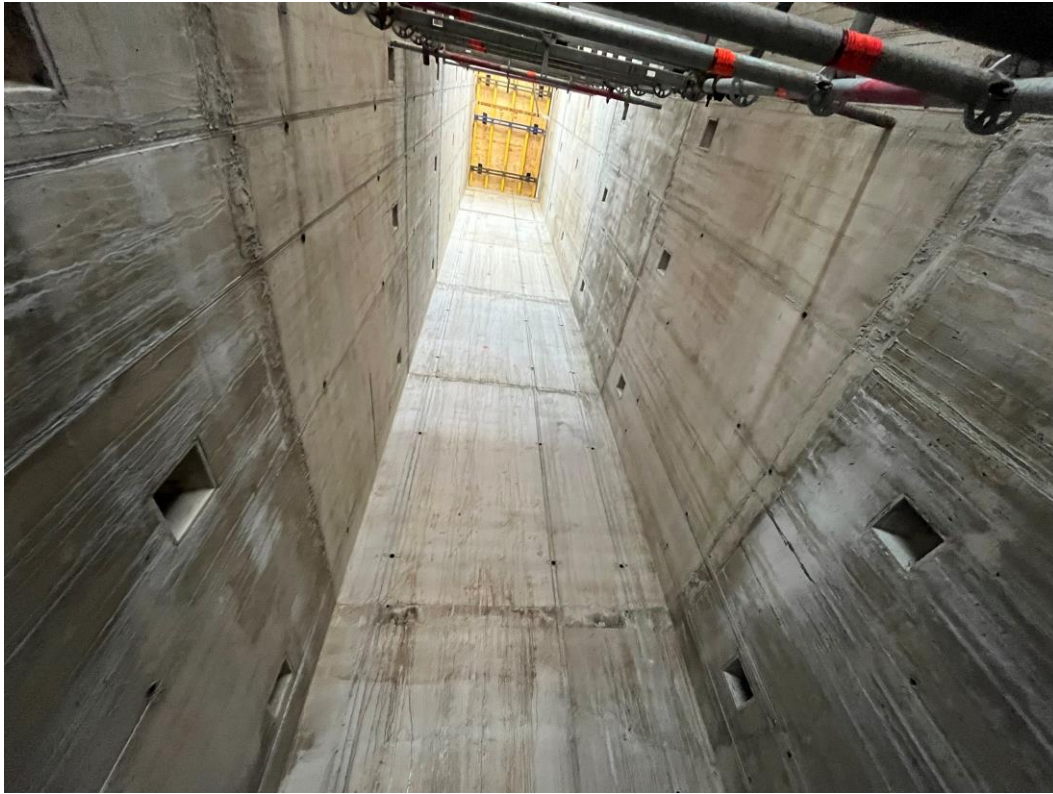
Ground floor columns cast



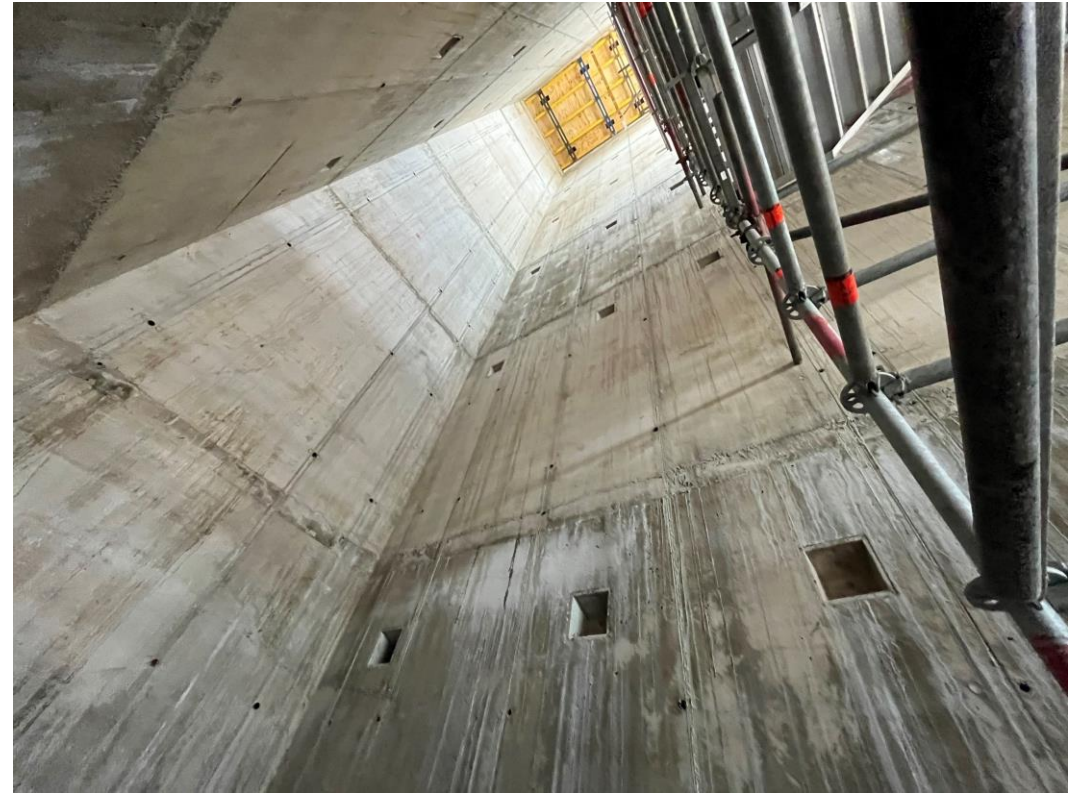
Formwork for floor slab casting in place

Sub-Structure & Super-Structure Progress

JUNE 2022



Staircore 2



Staircore 2

Sub-Structure & Super-Structure Progress

JUNE 2022



Formwork for floor slab casting in place



Reinforcement for concrete upstand

Sub-Structure & Super-Structure Progress

JUNE 2022



Reinforcement continuity installed



Reinforcement for concrete upstand

Sub-Structure & Super-Structure Progress

JUNE 2022



Site activity



Reinforce concrete beam and column cast

Sub-Structure & Super-Structure Progress

JUNE 2022



Retaining wall



Ground floor column

Sub-Structure & Super-Structure Progress

JUNE 2022



Formwork for floor slab casting in place



Formwork for floor slab casting in place

Sub-Structure & Super-Structure Progress

JUNE 2022



Formwork for floor slab casting in place



Formwork for floor slab casting in place

Sub-Structure & Super-Structure Progress

JUNE 2022



Formwork for floor slab casting in place



Zone A – reinforced concrete frame construction ongoing

Sub-Structure & Super-Structure Progress

JUNE 2022



Reinforcement for columns



Ground floor columns cast

Sub-Structure & Super-Structure Progress

JUNE 2022



Formwork removed to first floor slab



Scissor lift on site

TO FIND OUT MORE ABOUT

Parliament Square, Liverpool

PLEASE CONTACT

legacie

WWW.LEGACIE.CO.UK

By Appointment Only
Unit 4 Connect Business Village
Liverpool, L5 9PR
+44 (0) 151 207 9990